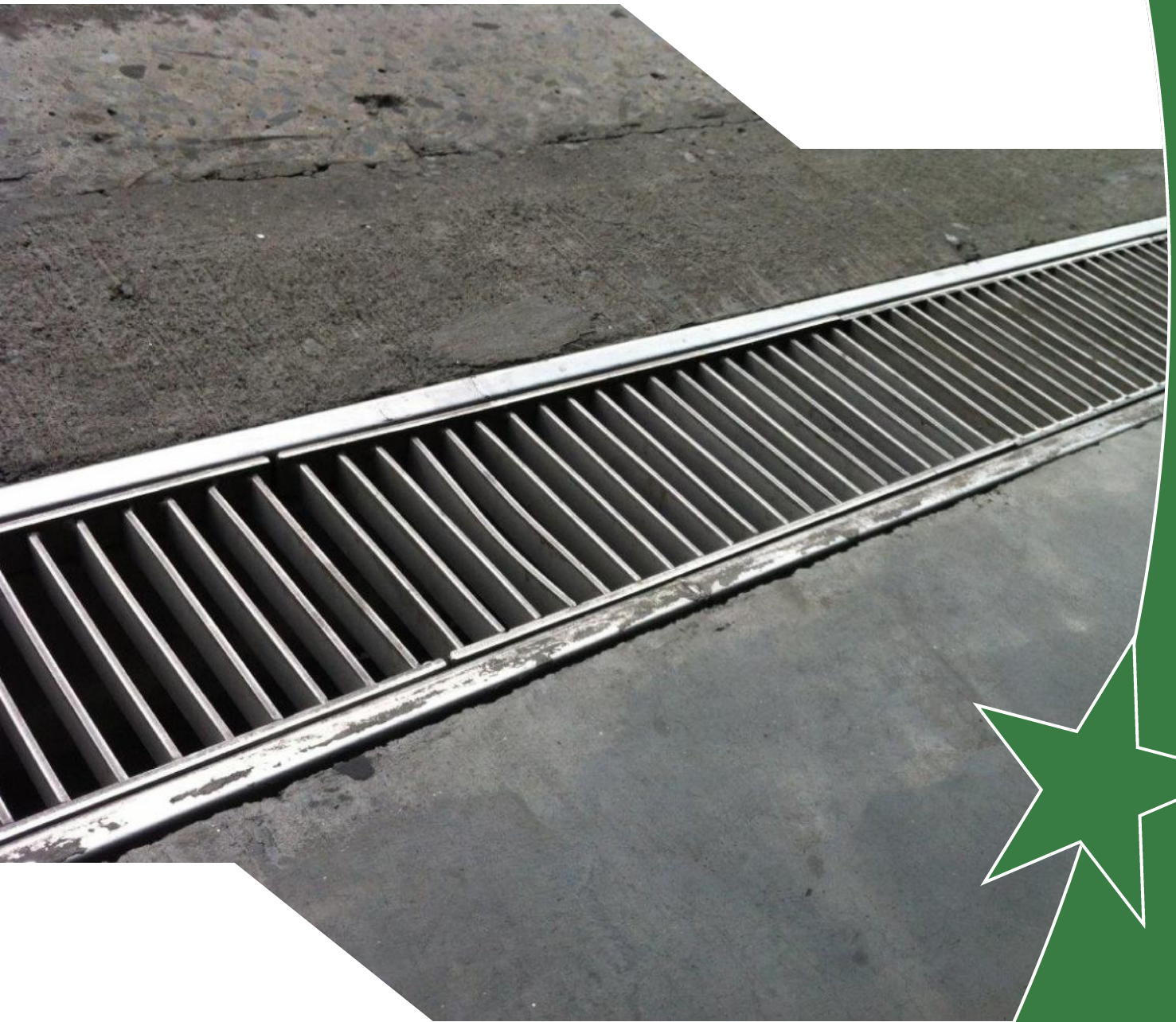




# Kent Ladder Grating



# Kent Ladder Grating

## Specify

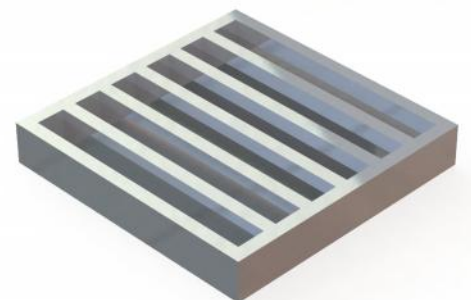
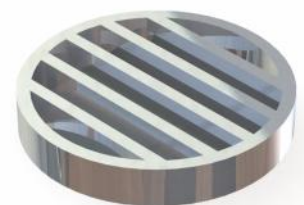
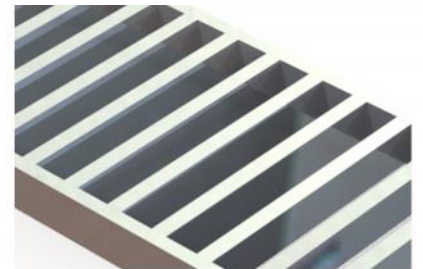
Specify: Kent Ladder Grating KLG150; 150mm wide x 1000mm long x 25mm deep; Grade 316L Stainless Steel; Load Class B See page 8 & 9 which shows how to create your own unique specification clause

## Description:

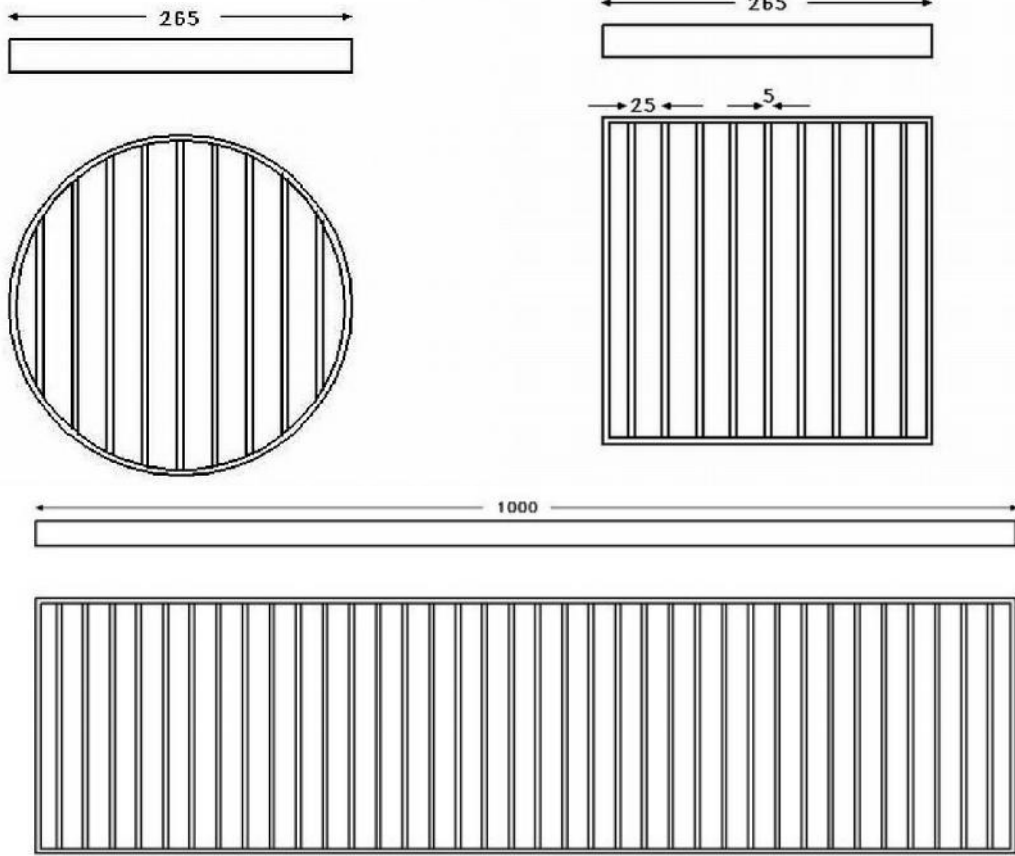
Kent Industrial Factory Ladder Grating is normally used to suit the KSBC range of drainage channels or the KAF Angle Frame and most Kent Industrial Gullies. It is available ex stock normally in 150mm and 200mm widths, each 25mm deep with 5mm thick load bars. In areas which require a heavier duty grating, it is regularly ordered as 25mm deep with 8mm bars or sometimes 30mm or 40mm deep with 8mm bars. A spacing of 20mm between bars gives this a large free area. It is therefore ideal for factories with pedestrian or heavy forklift traffic, with frequent, high intensity wash down. Lockdown version is optional. This type of grating is very regularly specified for Meat, Dairy, Beverage, Pharmaceutical factories.

## Recommended For:

- White Welly traffic
- Up to 20 Tonne Forklift
- Delivery Vehicle Access
- Pallet Trucks

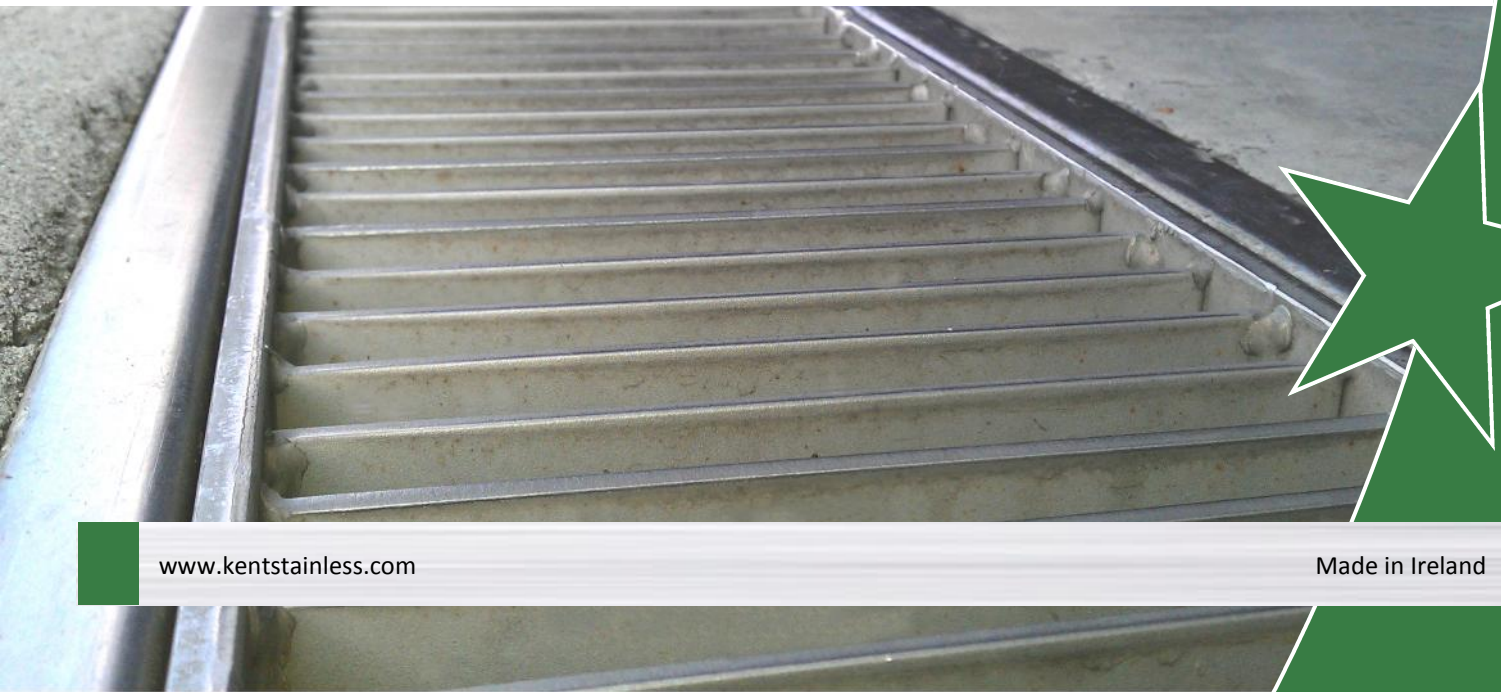


# Kent Ladder Grating



## Product Dimensions:

Reference	Length	Width	Depth	Suits	Load Cla
Kent Ladder Channel Grating (KLG150)	1000	146	25	KSBC150	A/B/C
Kent Ladder Round Grating (KLG216/25)	265	265	25	KV220	A/B/C
Kent Ladder Square Grating (KLG207/25)	265	265	25	KV215	A/B/C



# Kent Ladder Grating

## Maintenance

### Stainless Steel:

Clean the stainless steel components using warm water with a mild detergent with a non-abrasive cloth or sponge. Heavier stains may require the use of a nylon-scouring pad or a stainless steel cleaner. To remove paint or graffiti use a cloth and Alkaline or solvent paints and strippers according to type of paint. In the case of a bead blasted finish, where abrasive cleaning is required, always use a random circular rubbing action with a cloth. In the case of brushed finishes the surface consists of uniform fine 'scratches' running in one direction so where abrasive cleaning is required always use a straight back and forward rubbing action in the direction of the grain using soap and warm water. Rust spots or tea stains can occur on the surface of the material, these are normally caused by contamination from ordinary mild steel, particularly in areas where construction work has been undertaken. Such stains can be removed using Rust Remover 410. In cases where the surface is severely stained because of severe environmental conditions or scratched due to misuse, it may still be possible to restore the original finish using chemicals such as Oxalic Acid solution. There are many stainless steel polishes available to enhance the surface finish. We recommend Mister Stainless Ltd. As a provider for stainless steel products.

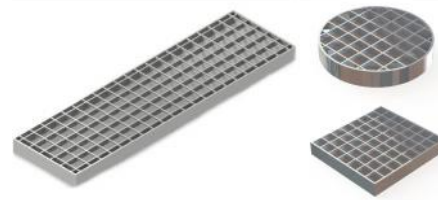


## Gratings Overview

### Plain Mesh Grating



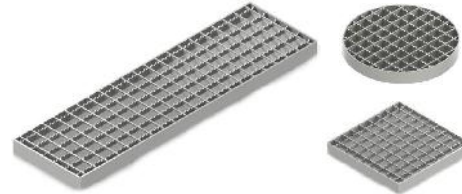
- Load Class A
- Load Class B
- Large free area
- High flow rate application
- Medium to heavy duty traffic



### Anti-slip Mesh Grating



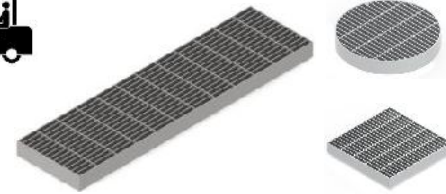
- Load Class A
- Load Class B
- Large free area
- High flow rate application
- Medium duty traffic
- Slip resistant



### Heel Mesh Grating



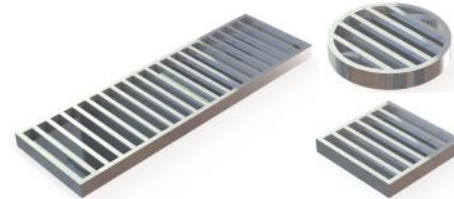
- Load Class A
- Load Class B
- Load Class C
- 6mm Aperture
- Low to Medium flow rate applications
- Low to Medium duty traffic



### Ladder Grating



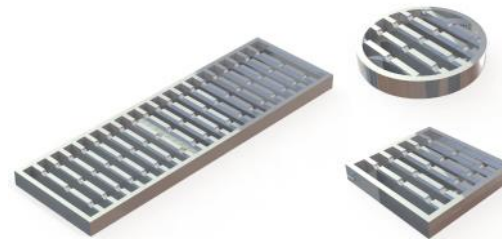
- Load Class B
- Load Class C
- Large free area
- High flow rate application
- Medium to very heavy duty traffic



### Anti-Slip Ladder Grating



- Load Class B
- Load Class C
- Large free area
- High flow rate application
- Medium to very heavy duty traffic



### Slotted Grating



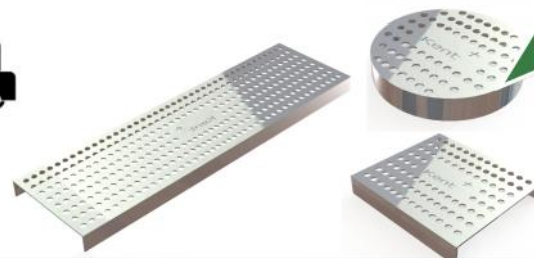
- Load Class A
- Load Class B
- Load Class C
- Slots can be made from 6mm to 20mm to suit high heel or high flow traffic
- Light to very heavy traffic
- Laser cut slots can include logo/wording for projects



### Perforated Grating



- Load Class A
- Load Class B
- Load Class C
- 8mm perforations
- Barefoot to heavy duty traffic
- Laser cut perforations can be designed into logo/ symbol/ wording



# Kent Ladder Grating

