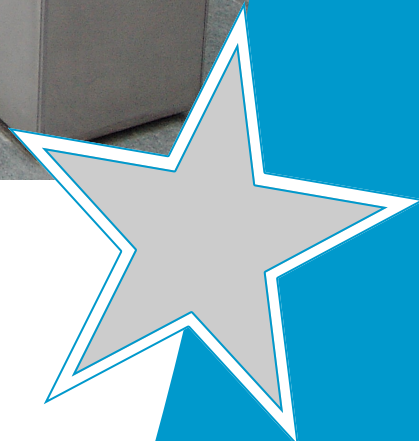




# Rectangular Planter



# Kent Rectangle Planter KRP-1500/440

## Specify:

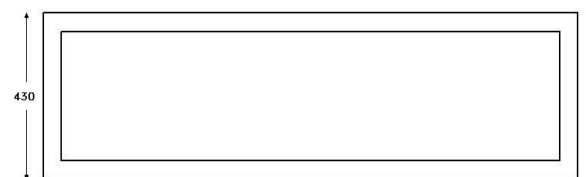
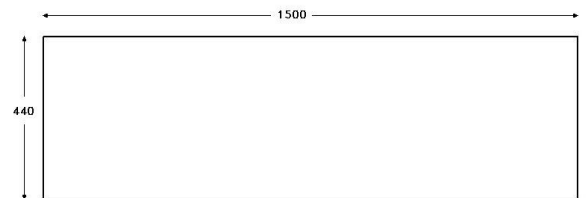
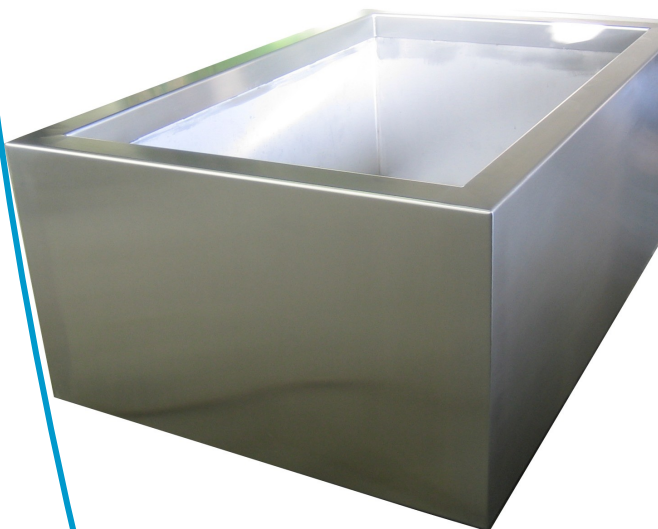
Kent Rectangle Planter KRP-1500/440; 440mm overall height; 1500mm overall length; 430mm overall width; Grade 316L Stainless Steel; 3mm thick wall; Satin Finish 320 Grit Polished.

The Kent Rectangle Planter KRP-1500/440 is manufactured with Grade 316L Stainless Steel. The external finish of the planter is a Satin 320 Grit Polished Finish that gives a RA value of less than 0.5. It has a 3mm thick wall throughout. The planter is 440mm overall in height, 430mm wide and 1500mm long. It is easy to install and has low maintenance when installed.



## Features

- Grade 316L Stainless Steel
- Satin 320 Grit Polished finish, gives off RA of less than 0.5
- 3mm thick wall
- Easy installation
- Low maintenance



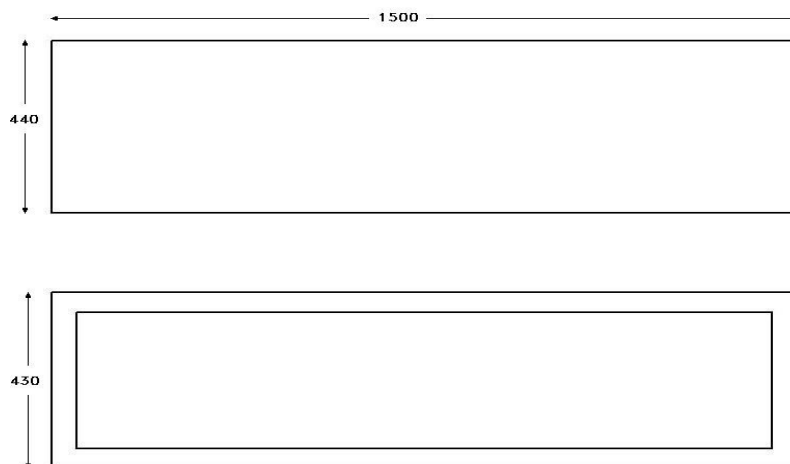
# Kent Rectangle Planter KRP-1500/440

## Product Dimensions:

Reference	Height	Width	Length
Kent Rectangle Planter KRP 1500/440	440mm	430mm	1500mm
Kent Rectangle Planter KRP 1800/440	440mm	430mm	1800mm
Kent Rectangle Planter KRP 1500/800	800mm	430mm	1500mm
Kent Rectangle Planter KRP 1800/800	800mm	430mm	1800mm

## Fixing Details:

All of Kent's Planters are freestanding units. There is no fitting required but they can be fitted on request.



# Kent Rectangle Planter KRP-1500/440

## Product Options

Kent Rectangle Planter KRP 1500/440

Kent Rectangle Planter KRP 1800/440

Kent Rectangle Planter KRP 1500/800

Kent Rectangle Planter KRP 1800/800

## Specify

Kent Rectangle Planter KRP-1500/440; 440mm overall height; 1500mm overall length; 430mm overall width; Grade 316L Stainless Steel; 3mm thick wall; Satin Finish 320 Grit Polished.

Bright Satin

Satin 320 Grit Polished

Bright Peened

Shot Peened

Cold Rolled Electropolished

Grade

316L

304L

### Overview

The Kent Rectangle Planter KRP-1500/440 is manufactured with Grade 316L Stainless Steel. The external finish of the planter is a Satin 320 Grit Polished Finish that gives a RA value of less than 0.5. It has a 3mm thick wall throughout. The planter is 440mm overall in height, 430mm wide and 1500mm long. It is easy to install and has low maintenance when installed.

### Maintenance

#### Stainless Steel:

Clean the stainless steel components using warm water with a mild detergent with a non-abrasive cloth or sponge. Heavier stains may require the use of a nylon-scouring pad or a stainless steel cleaner. To remove paint or graffiti use a cloth and Alkaline or solvent paints and strippers according to type of paint. In the case of a bead blasted finish, where abrasive cleaning is required, always use a random circular rubbing action with a cloth. In the case of brushed finishes the surface consists of uniform fine 'scratches' running in one direction so where abrasive cleaning is required always use a straight back and forward rubbing action in the direction of the grain using soap and warm water. Rust spots or tea stains can occur on the surface of the material, these are normally caused by contamination from ordinary mild steel, particularly in areas where construction work has been undertaken. Such stains can be removed using Rust Remover 410. In cases where the surface is severely stained because of severe environmental conditions or scratched due to misuse, it may still be possible to restore the original finish using chemicals such as Oxalic Acid solution. There are many stainless steel polishes available to enhance the surface finish. We recommend Mister Stainless Ltd. As a provider for stainless steel products.



