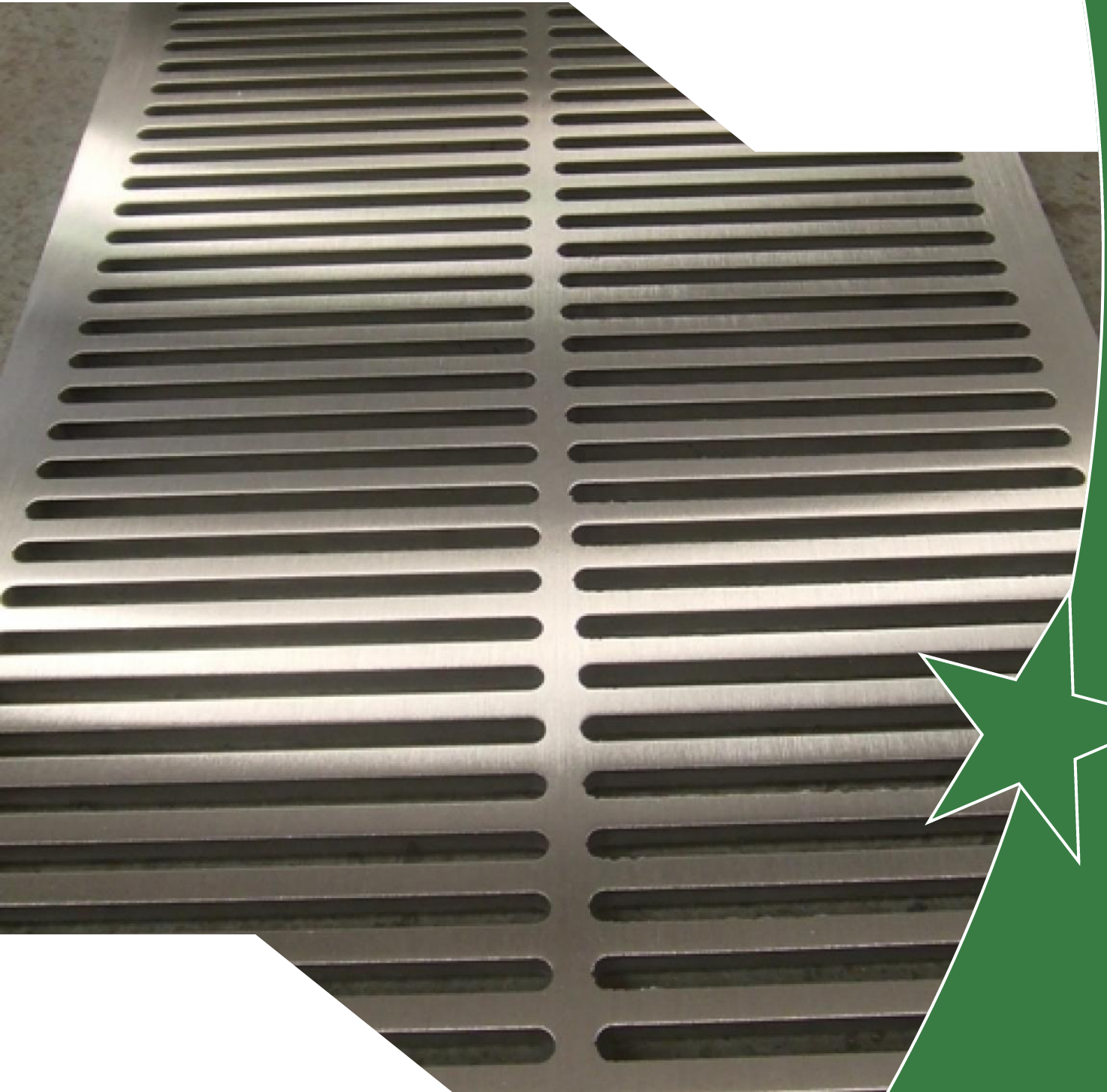




# Kent Slotted Grating



# Kent Slotted Grating

## Specify

Specify: Kent Antislip Ladder Grating KALG150; 150mm wide x 1000mm long x 25mm deep; Unlocked; Grade 304L Stainless Steel; Load Class B

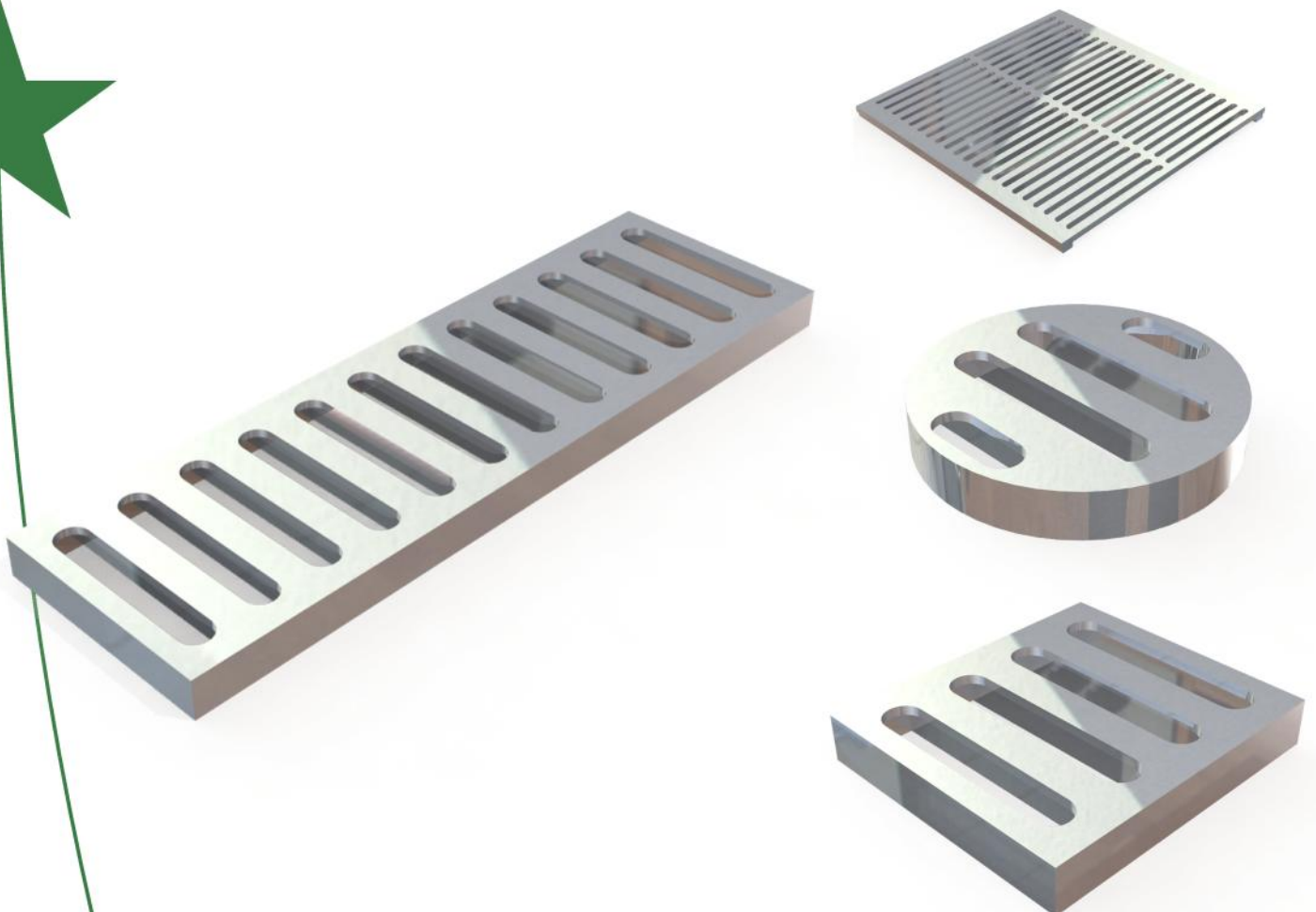
## Description:

This Slotted Grating - KSG, is designed for Internal channels is fabricated using a combination of our Perforated Grating with a Ladder Grating underneath. The perforated top Plate is 4mm thick with a 20mm x 5mm Ladder Grating underneath. The ladder grating underneath can be made from 8mm or 10mm which makes this combination our strongest grating. The accompanying gully gratings are laser cut slotted or perforated from 10mm thick plate

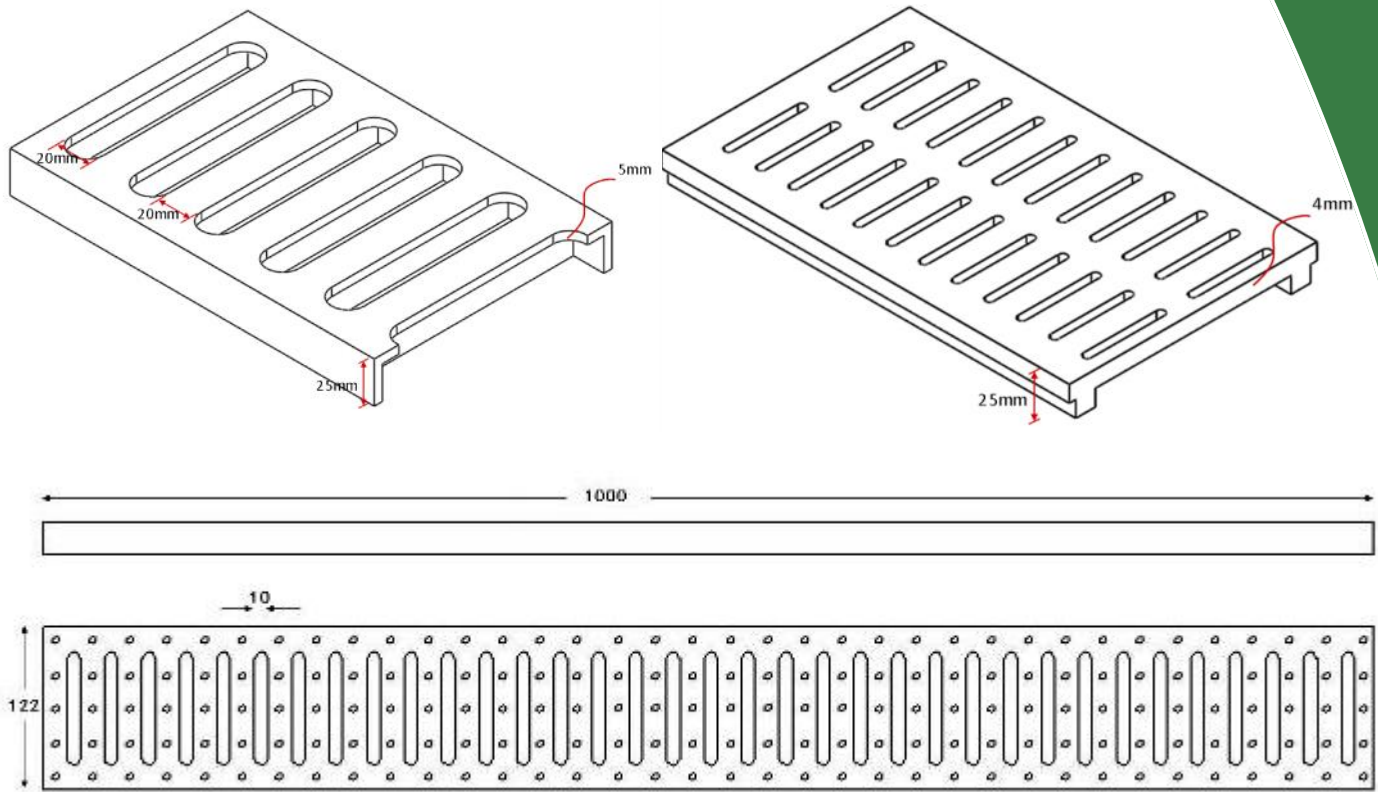
Finish is Satin Finish to 320 Grit. Typical sizes are 146mm wide and 196mm wide x 990mm, 207mm x 207mm, 307mm x 307mm. All sizes can be fabricated. 25mm depth as standard – increased to 30mm, 40mm or 50mm where loading requires this.

## Recommended For:

- White Welly traffic
- Up to 20 Tonne Forklift
- Delivery Vehicle Access
- Pallet Trucks



# Kent Slotted Grating



## Product Dimensions:

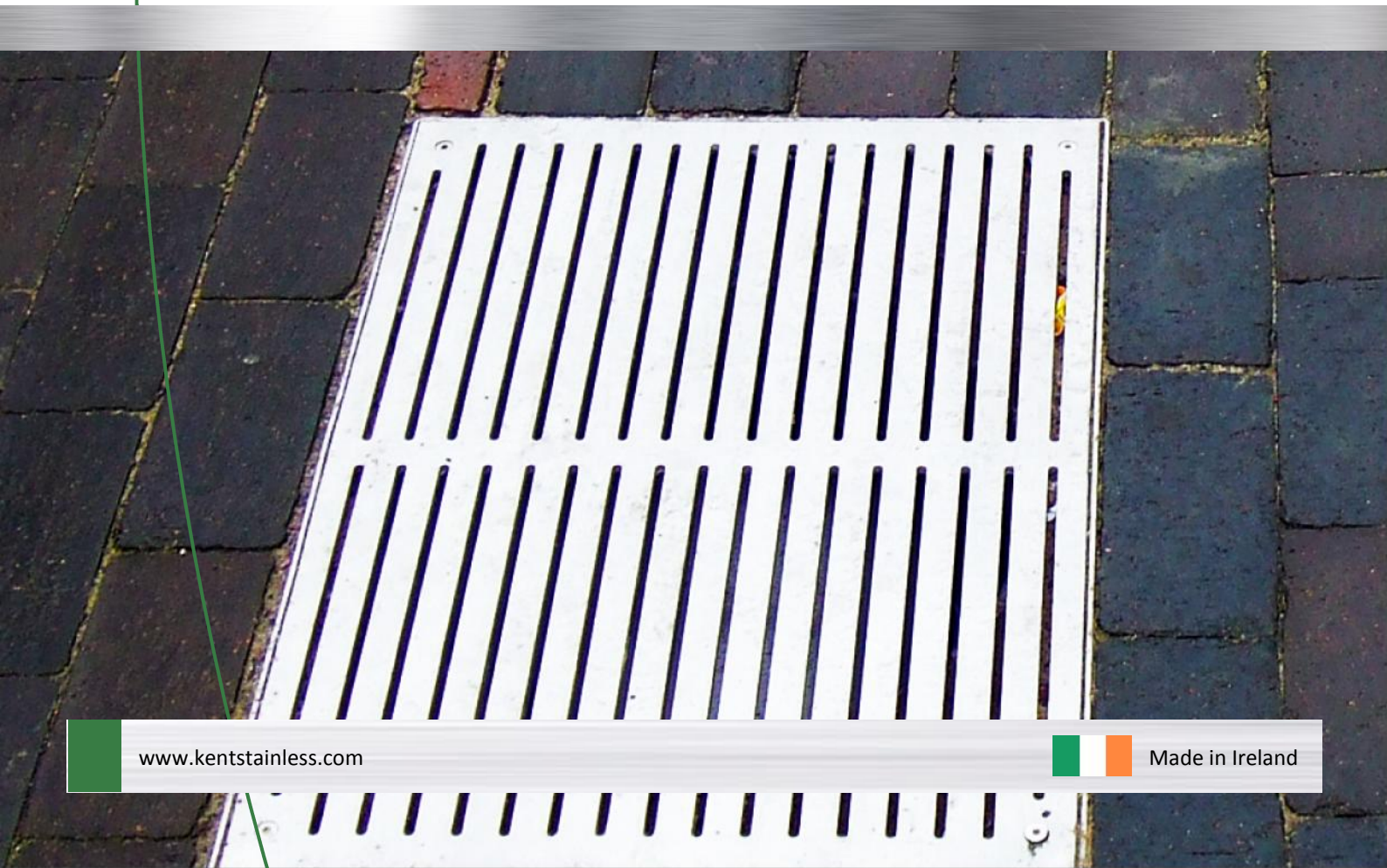
Reference	Length	Width	Depth	Suits	Load Cla
Kent Slotted Channel Grating (KSG150)	1000	146	25	KSBC150	A/B/C
Kent Slotted Round Grating (KSG216/25)	265	265	25	KV220	A/B/C
Kent Slotted Square Grating (KS207/25)	265	265	25	KV215	A/B/C



## Maintenance

### Stainless Steel:

Clean the stainless steel components using warm water with a mild detergent with a non-abrasive cloth or sponge. Heavier stains may require the use of a nylon-scouring pad or a stainless steel cleaner. To remove paint or graffiti use a cloth and Alkaline or solvent paints and strippers according to type of paint. In the case of a bead blasted finish, where abrasive cleaning is required, always use a random circular rubbing action with a cloth. In the case of brushed finishes the surface consists of uniform fine 'scratches' running in one direction so where abrasive cleaning is required always use a straight back and forward rubbing action in the direction of the grain using soap and warm water. Rust spots or tea stains can occur on the surface of the material, these are normally caused by contamination from ordinary mild steel, particularly in areas where construction work has been undertaken. Such stains can be removed using Rust Remover 410. In cases where the surface is severely stained because of severe environmental conditions or scratched due to misuse, it may still be possible to restore the original finish using chemicals such as Oxalic Acid solution. There are many stainless steel polishes available to enhance the surface finish. We recommend Mister Stainless Ltd. As a provider for stainless steel products.

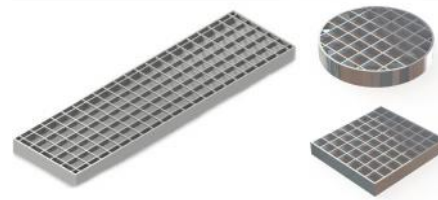


## Gratings Overview

### Plain Mesh Grating



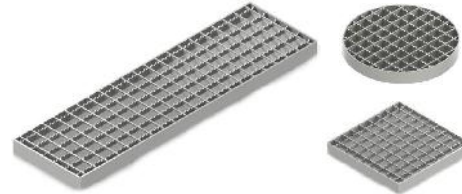
- Load Class A
- Load Class B
- Large free area
- High flow rate application
- Medium to heavy duty traffic



### Anti-slip Mesh Grating



- Load Class A
- Load Class B
- Large free area
- High flow rate application
- Medium duty traffic
- Slip resistant



### Heel Mesh Grating



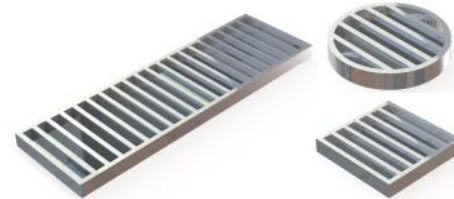
- Load Class A
- Load Class B
- Load Class C
- 6mm Aperture
- Low to Medium flow rate applications
- Low to Medium duty traffic



### Ladder Grating



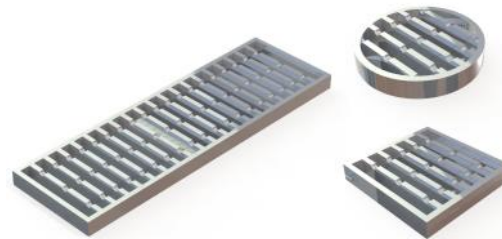
- Load Class B
- Load Class C
- Large free area
- High flow rate application
- Medium to very heavy duty traffic



### Anti-Slip Ladder Grating



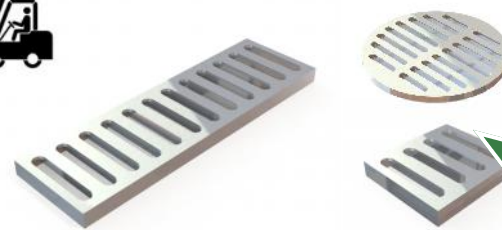
- Load Class B
- Load Class C
- Large free area
- High flow rate application
- Medium to very heavy duty traffic



### Slotted Grating



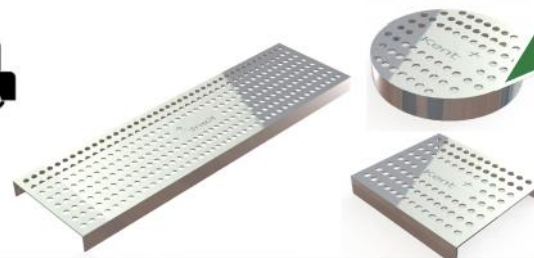
- Load Class A
- Load Class B
- Load Class C
- Slots can be made from 6mm to 20mm to suit high heel or high flow traffic
- Light to very heavy traffic
- Laser cut slots can include logo/wording for projects



### Perforated Grating



- Load Class A
- Load Class B
- Load Class C
- 8mm perforations
- Barefoot to heavy duty traffic
- Laser cut perforations can be designed into logo/ symbol/ wording



# Kent Slotted Grating

