

Object Colour concept

KEMMLIT offers a variety of colours and **combination possibilities**. The selection is nearly boundless. Even **special colours** and **digital prints** are available on request

Locker doors, locker infill panels, benches and shelves made of HPL:



Traffic white 9317
similar to NCS S 0502-G50Y



Granite white 9317P



Light grey 7208
similar to NCS S 2500-N



Quartz grey 7708
similar to NCS S 5000-N



Graphite 7808
similar to NCS S 7502-B



Cappuccino 1117
similar to NCS S 3010-Y60R



Burano brown 8617
similar to NCS S 6010-Y30R



Corn yellow 1708
similar to NCS S 1070-Y10R



Orange 2717
similar to NCS S 0570-Y40R



Tornado red 3508
similar to NCS S 0580-Y90R



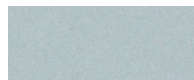
Garnet red 3708
similar to NCS S 3060-R



Pacific blue 5715
similar to NCS S 2060-R90B



Lagoon blue 5408
similar to NCS S 1030-R90B



Silver 7408



Lemon green 6715
similar to NCS S 1060-G60Y

Locker doors, locker infill panels and shelves made of toughened safety glass (TSG):



Traffic white 9317
similar to RAL 9016



Light grey 7208
similar to RAL 7035



Anthracite 7603
similar to NCS S 5502-Y



Dark blue 5603
similar to RAL 5008



Light blue 5203
similar to RAL 6034



White green 6504
similar to RAL 6019



White yellow 1503
similar to NCS S 1020-Y



Light yellow 1403
similar to NCS S 0560-Y10R



Pale red 3303
similar to RAL 2012



Red 3117
similar to RAL 3013



Dark red 3603
similar to NCS S 5040-R



Structure SR 200¹



Satinato¹

Locker doors, locker infill panels made of aluminium:



Traffic white 9317
similar to RAL 9016



Agate grey 7317
similar to RAL 7038



Anthracite 7603
similar to RAL 7005



Dark blue 5603
similar to RAL 5008



Dark red 3603
similar to RAL 3004



Deep black 7613
similar to RAL 9005

Locker doors, locker infill panels made of steel sheet as well as profiles made of aluminium:



Traffic white 9317²
similar to RAL 9016



Light grey 7208²
similar to RAL 7035



White 02²
similar to RAL 9016



Manhattan 05
similar to NCS 2801-Y36R



Yellow 10
similar to RAL 1023



Dark blue 04
ähnlich RAL 5003



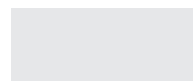
Anthracite 03
similar to RAL 7043



Dark red 01
similar to RAL 3005



Red 11
similar to RAL 3003



Satin anodised 08³
similar to E6 / EV1

**Colour concept
valid from 07/2017**

¹ shelves only

² locker doors only

³ profiles only

Please note that the above shown colours may differ slightly from the original colour due to typographic reasons. We will gladly advise you personally.