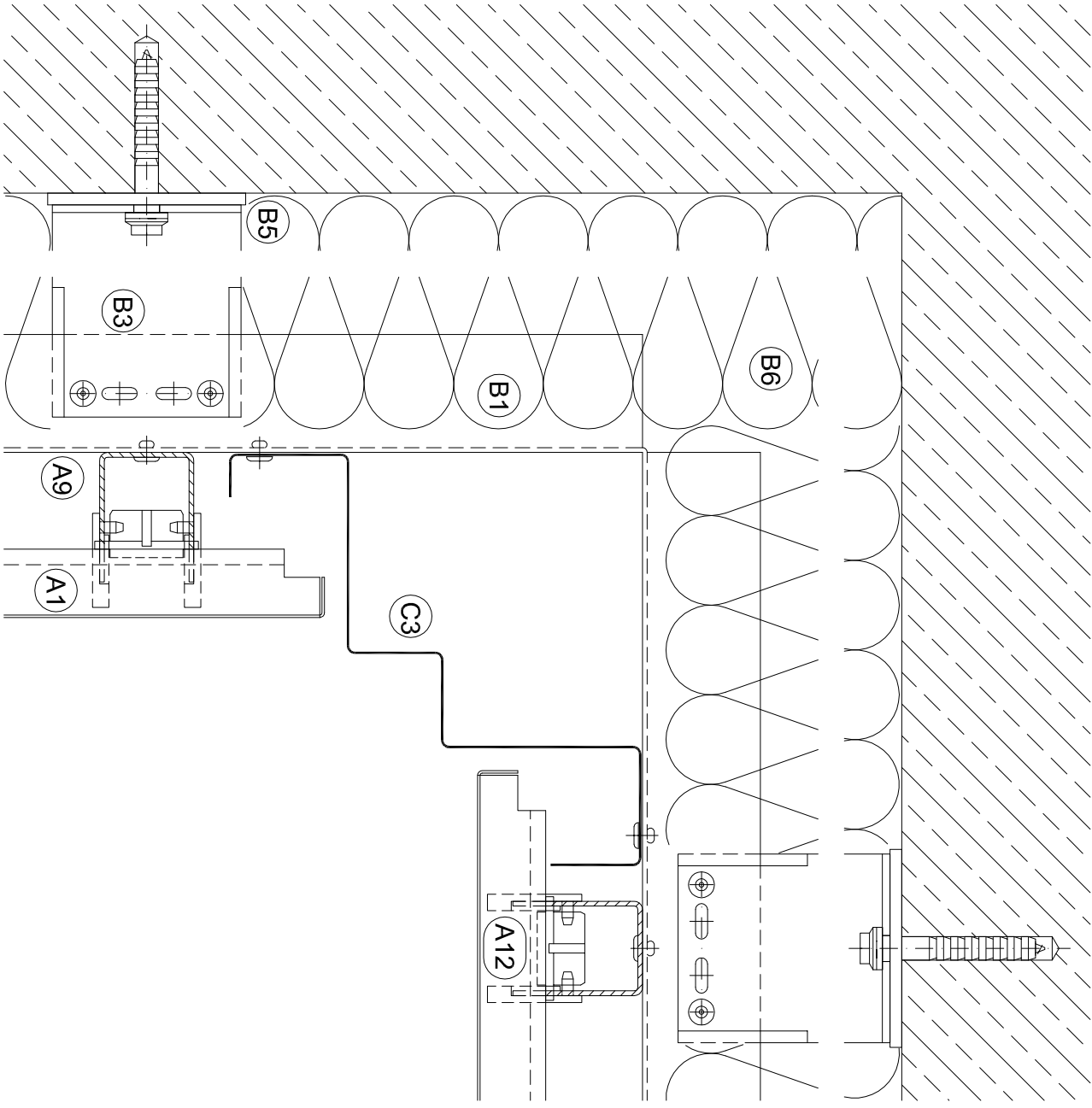


B7




Kalzip FC system	
A1	FC panel
A2	Transition sheet
A3	External corner
A4	Internal corner
A5	Perforated panel
A6	FC panel curved
A7	Mono click bracket
A8	Modular click rail
A9	Modular click rail SE (structural effective)
A10	Modular click rail SEL 40
A11	Guidance snapper
A12	Fixing point clamp
A13	Fixing point clamp
A14	Flashing support

Primary subconstruction	
B1	Continuous angle
B2	T-profile
B3	L-Bracket
B4	U-Bracket
B5	Thermal barrier pad
B6	Thermal insulation
B7	Brickwall/Concrete
B8	Structural liner tray

Visible Flashings	
C1	Vertical joint flashing
C2	External corner flashing
C3	Internal corner flashing
C4	Folded jamb flashing
C5	Window head flashing
C6	Window sill flashing
C7	F-profile
C8	Perforated flashing
C9	Base flashing
C10	Cover flashing
C11	Flashing miscellaneous

Secondary subconstruction	
D1	Gleat
D2	Support profile
D3	Support bracket
D4	Bracket
D5	Z-profile
D6	Top hat section

Revision	Drawn	CHK'D	Date	Description


 A Trisa Steel Enterprise
Kalzip Ltd
 Haydock Lane, Haydock, St. Helens
 MERSEYSIDE, WA11 9TY
 Tel: 01942 295 500
 Fax: 01942 295 508

Project: **Kalzip Standard Details**
 Client: **Kalzip Ltd**

Title: **FC Rainscreen SE Rail Wide Joint Internal Corner**
 Scale: **NTS**
 Date: **17.07.12**
 Drawn: **JW**
 Checked:
 Dwg No. **KZ-0-ASCC-FC-SE-2-004**
 Rev:

This drawing is copyright and is issued on the express condition that it is not to be copied or disclosed by or to any unauthorised person or firms without prior consent in writing from Kalzip.