



BEYOND SECURITY

KABA[®]

Public Systems & Solutions



Entry control flexibly managed

"On busy days, our stadium is packed, with up to 45,000 fans coming to enjoy the game. The controlled entry of large numbers of people within a short period of time requires high-performance systems that efficiently control authorised access. Kaba units allows us to flexibly define the necessary entrance frequencies and safety levels at each entrance."



For barrier-free access, we recommend automatic half-height swing doors for half-height units and for full-height turnstiles, swing doors with an appropriate design.

Public Systems & Solutions

Solutions for entrance to public amenities.

In this area, Kaba is able to provide specific solutions for controlled pedestrian entry to public and recreational amenities. Key requirements include speed, simple operation and efficient access control. Depending on the entrance frequency, preferred safety level and local conditions, Kaba offers a variety of suitable tripod barriers, turnstiles or spe-

cial units. Our PSS products are compatible with a wide range of ticket management systems, from simple barcode cards to VIP passes holding biometric data.



Tripod turnstiles

Kaba tripod turnstiles are TÜV-certified for use in emergency and escape routes and can be controlled by a central building management system. They move using small dynamic forces in order to protect the user.

Motorised versions offer a patented fold-down mechanism with automatic re-engaging - particularly suited to use in stadiums and large events centres with multiple units. In situations of danger or emergency, the top bar folds down

automatically allowing unhindered passage. The mechanism re-engages automatically at the touch of a button. This means that you do not need to deploy staff to manually return the tripod barriers to their operational position once the danger has passed.

Local laws must always be observed and in some cases, individual authorisation may be required.



Benefits

- > Fold-down bars and patented automatic re-engaging
- > Modular individual and multiple installation
- > Comfortable passage thanks to servo positioning drive
- > Minimum energy consumption thanks to low energy drive
- > Minimal risk of injury thanks to low energy drive
- > Suitable for outdoor installation
- > Suitable for installation in emergency and escape routes with additional equipment; observe local building regulations.
- > Barrier-free solutions in conjunction with automatic half-height swing doors in suitable design



Half-height turnstiles

Benefits

- > Attractive design for challenging entrance areas
- > Produced from robust stainless steel
- > Space-saving double unit
- > Comfortable passage thanks to servo positioning drive
- > Quiet, noiseless operation
- > Versions with 3 or 4 rows of bars
- > Simple assembly on finished floor level

The main characteristic of these functional turnstiles is the elegant stainless steel housing, ergonomically crafted for an optimum flow of pedestrians. The double unit offers space-saving functionality thanks to the interlocking bars.

Half-height turnstiles are available in 2 heights - with 3 or 4 rows of bars. Their attractive design makes these units ideal for controlling access to swimming pools, spas and fitness studios.



Half-height sensor gate

Benefits

- > Unique protection sensor: V-shaped sensor strips for optimal personal protection and vertical light grid for single-file access
- > Comfortable passage, even with bags or luggage
- > No contact with the sliding door leaves
- > High passage frequency and optimum personal protection
- > Robust stainless steel body
- > Modular system with base and expansion units for multi-installation
- > Automatic sneak-by guard (note safety level)
- > Acoustic alarm on unauthorised use
- > Child detection (note safety level)

The unit integrates sensor monitoring with automatic sliding door leaves which retract back into the housing with an arching motion during passage. This enables quick, comfortable and contactless passage. The doors close again immediately once the person has passed through, to prevent un-

authorised passage. This unique network of sensors also ensures high personal protection - pedestrians are detected accurately and protected from injury by the sliding door leaves.



Full-height turnstiles

Benefits

- > Pedestrians cannot become stuck thanks to end point locking
- > Versions with integrated sensor barrier for bicycles, swing door for barrier-free access or for transporting materials, emergency exit function or WK2 resistance class
- > Space-saving double unit
- > Modular combination of bars, roofs, guiding elements and side elements
- > Sustainable quality for use in buildings or outdoors
- > Turnstile columns and bars in robust stainless steel
- > Rotary speed adapts itself to the pedestrian
- > Low energy drive
- > Low energy consumption
- > Behaviour in the event of a power failure can be freely determined
- > Can be used in regions with harsh local conditions
- > Integrated parameterisable random generator
- > Optional secondary identification for additional security
- > Distances on the shearing edges have been dimensioned to ensure that there is no risk of injury

These units are ideal for securing amenities with particularly stringent security requirements, such as football stadiums or large events centres, as well as perimeter protection around open-air swimming pools.

Full-height turnstiles offer an optimum level of single-file access and the required level of robustness, as the units are typically used outdoors. Versions are available with 3 or 4 leaves in a variety of designs.

The perfect solution for every entrance situation



Quick, robust and user-friendly TPB tripod turnstiles control entry to sports stadiums



An automatic half-height swing door alongside the tripod turnstiles provides barrier-free access



A reader and coin collector can be integrated into the tripod turnstiles pedestals



Access to swimming pools controlled in style with HTS half-height turnstiles

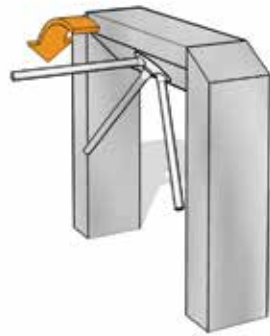


Ideal for football stadiums - the reader and unit on the FTS-L02 turnstile are shielded behind locked doors to protect from vandalism after the game: ... when open



... when closed

Tripod turnstiles



Standard units

Construction

Description

TPB-E01

Housing and base columns in a single unit (open design).

Material housing

Stainless steel satin finish AISI 304.

Material base columns

Stainless steel satin finish AISI 304.

Material crossbars

Stainless steel AISI 304.

Finish

Stainless steel satin finish.

Function

Type 0 *
Type 1.1 **
Type 1.2 ***
Type 2 ****

Electrical system

Control system integrated in the unit.

Power supply 110-230 VAC 50/60 Hz.

Standby power 10 VA.

Installation

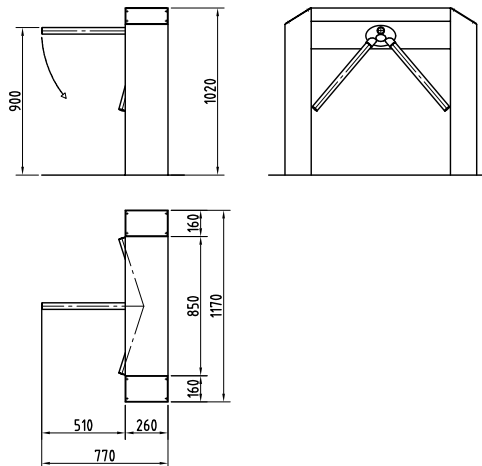
Dowelled on finished floor level, FFL.

Suitable for outdoor installation!

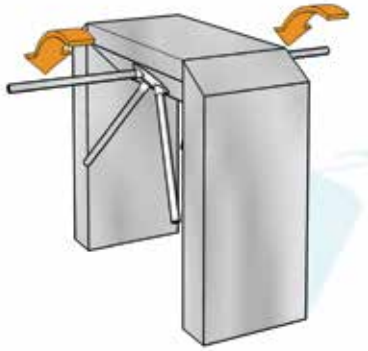
Protection classes

Housing IP33, components conducting supply voltage IP43.

- * Type 0 Manual motion; mechanically free in 1 direction/ opposite direction blocked
- ** Type 1.1 Manual motion; electrically controlled in 1 direction/ opposite direction blocked (closed in both directions with no current)
- *** Type 1.2 Manual motion; electrically controlled in 2 directions (closed in both directions with no current)
- **** Type 2 Power-assisted motion; servo positioning drive/ electrically controlled in 2 directions



All measurements in mm



TPB-L06

Housing and base columns in a single unit (open design).

Double unit based on the TPB-E01, particularly space-saving design.

Stainless steel satin finish AISI 304.

Stainless steel satin finish AISI 304.

Stainless steel AISI 304.

Stainless steel satin finish.

Type 0 *

Type 1.1 **

Type 1.2 ***

Type 2 ****

Control system integrated in the unit.

Power supply 110-230 VAC 50/60 Hz.

Standby power 20 VA.

Dowelled on finished floor level, FFL.

Suitable for outdoor installation!

Housing IP33, components conducting supply voltage IP43.

TPB-L07

Housing and base columns in a single unit (open design).

Stainless steel satin finish AISI 304.

Stainless steel satin finish AISI 304.

Stainless steel AISI 304.

Stainless steel satin finish.

Type 0 *

Type 1.1 **

Type 1.2 ***

Type 2 ****

Control system integrated in the unit.

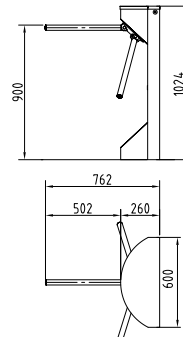
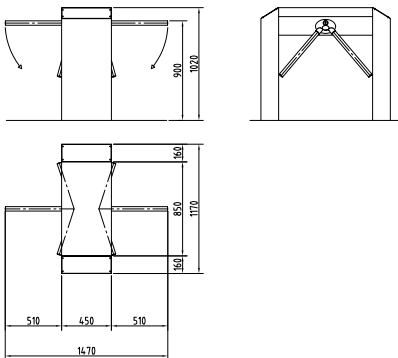
Power supply 110-230 VAC 50/60 Hz.

Standby power 10 VA.

Dowelled on finished floor level, FFL.

Suitable for outdoor installation!

Housing IP33, components conducting supply voltage IP43.



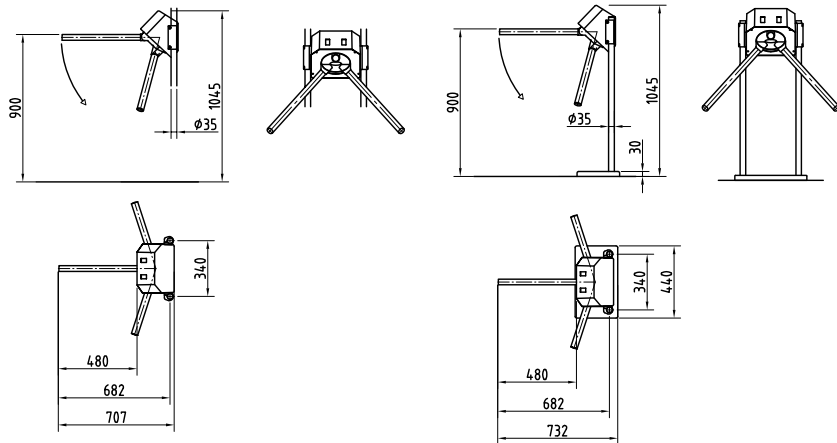
Tripod turnstiles



Standard units	TPB-L04	Option
Construction Description	Housing for attachment to equipment provided by the customer. Signal device red/green display, square version with flush installation in the housing.	
Material housing	Plastic.	
Material base columns	-	
Material crossbars	Aluminium.	
Finish	Grey plastic RAL 7016.	
Function	Type 0 * Type 1.1 ** Type 1.2 ***	
Electrical system	Control system integrated in the unit, power supply provided by customer. Power supply 24 VDC. Standby power 10 VA.	
Installation	Clamp fixing, Ø approx. 35 mm to equipment provided by the customer. Not suitable for outdoor installation!	
Protection classes	Housing IP33, components conducting supply voltage IP43.	

TPB-L04 with option „Base columns made of stainless-steel satin finish AISI 304.“

- * Type 0 Manual motion; mechanically free in 1 direction/opposite direction blocked
- ** Type 1.1 Manual motion; electrically controlled in 1 direction/opposite direction blocked (closed in both directions with no current)
- *** Type 1.2 Manual motion; electrically controlled in 2 directions (closed in both directions with no current)
- **** Type 2 Power-assisted motion; servo positioning drive/electrically controlled in 2 directions



All measurements in mm

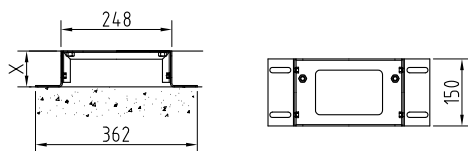
Options (dependent on unit type)

TPB types

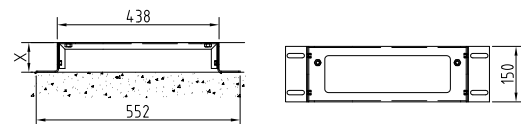
	TPB-E01	TPB-L06	TPB-L07	TPB-L04
Construction				
Housing in stainless steel AISI 316.	•			
Cover plate in stainless steel.	•	•		
Base columns in stainless steel.				•
Round instead of angular pedestals.	•			
Function				
Random generator.	•		•	
Counter.	•	•	•	
Emergency and escape route modules with emergency button, optional additional emergency button.	•	•	•	
Collapsible bars on unit type 1.1, 1.2 and 2. Automatic reset on type 2.	•	•	•	•
Electrical system				
Installation preparation on flat surface.	•	•		
Push button on flat surface.	•	•	•	
Operating panels and frame or surface mount housing.	•	•	•	•
Various signal devices.	•	•	•	
Distribution board (connection of max. 4 OPL possible) and power supply plug for supplying external nodes.	•	•	•	
Installation				
Pallet with stainless steel ramp and rubber covering.	•	•	•	
With substructure X = 80 - 160 mm for sub floor level.	•	•		

Installation variants

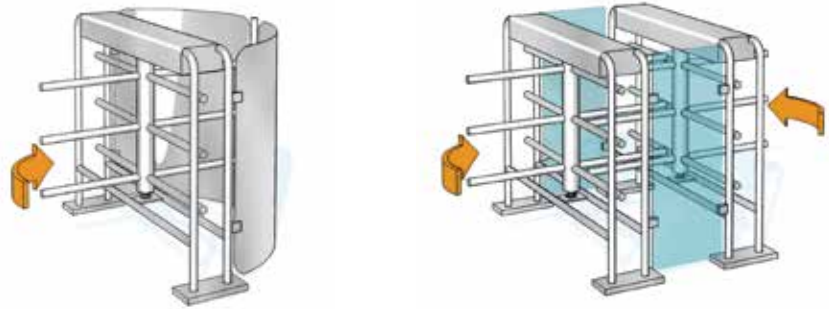
Substructure TPB-E01



Substructure TPB-L06

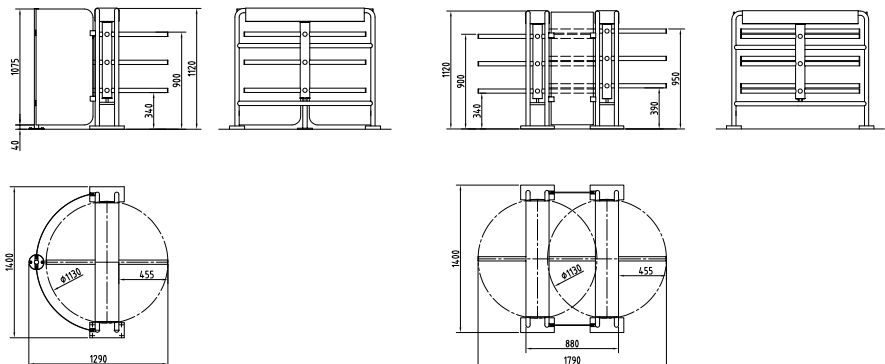


Half-height turnstiles



Standard units	HTS-L01	HTS-L02
Construction Description		
Support frame material	Curved tubular stainless steel AISI 304, Ø 40 mm.	Double unit, particularly space-saving design. Curved tubular stainless steel AISI 304, Ø 40 mm.
Housing and limiter material	Curved tubular stainless steel AISI 304, Ø 3 mm.	Two housings made of 3 mm stainless steel plate AISI 304 with two vertical connecting elements made of 10 mm tempered safety glass.
Rotating unit	90°, with tubular column, Ø 89 mm in stainless steel AISI 304.	Two pieces, 90°, with tubular column, Ø 89 mm in stainless steel AISI 304.
Crossbars	Bar-shaped, 3 pieces each in stainless steel AISI 304, Ø 40 mm.	Bar-shaped, 3 pieces each in stainless steel AISI 304, Ø 40 mm.
Barrier element	Barrier element made of stainless steel plate AISI 304 with poles for prevention of trespassing the barred segment.	-
	Electric locking and drive integrated into the upper housing.	Electric locking and drive integrated into the upper housings.
Finish	Stainless steel satin finish.	Stainless steel satin finish.
Function	Type 2 ****	Type 2 ****
Electrical system	Control unit integrated into the housing. Power supply 110-230 VAC 50/60 Hz. Standby power 15 VA. Behaviour in the event of a power failure can be determined, standard adjustment: Freely rotatable.	Control unit integrated into the housing. Power supply 110-230 VAC 50/60 Hz. Standby power 30 VA. Behaviour in the event of a power failure can be determined, standard adjustment: Freely rotatable.
Installation	Dowelled on finished floor level, FFL. Suitable for outdoor installation!	Dowelled on finished floor level, FFL. Suitable for outdoor installation!
Protection classes	Housing IP43, components conducting supply voltage IP54.	Housing IP43, components conducting supply voltage IP54.

**** Type 2 Power-assisted motion; servo positioning drive/ electrically controlled in 2 directions



All measurements in mm

Options (dependent on unit type)

HTS types

Construction

Raising of barrier and personal guiding elements to 1380 mm.

HTS-L01

HTS-L02

Electrical system

Installation preparation with assembly plate.

Consoles with adapter in plastic or aluminium (also available in stainless steel for an additional charge).

Coins and coin validator.

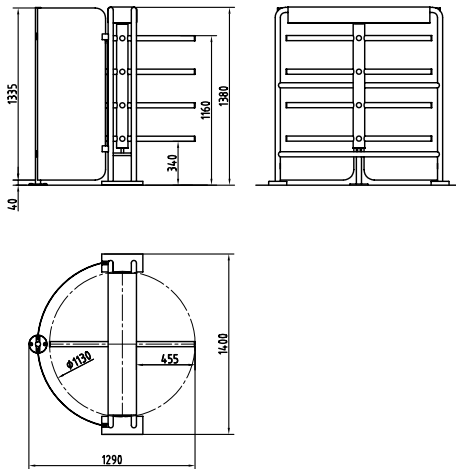
Push button in stainless steel tube console for manual single release.

Operating panels with frame or surface mount housing.

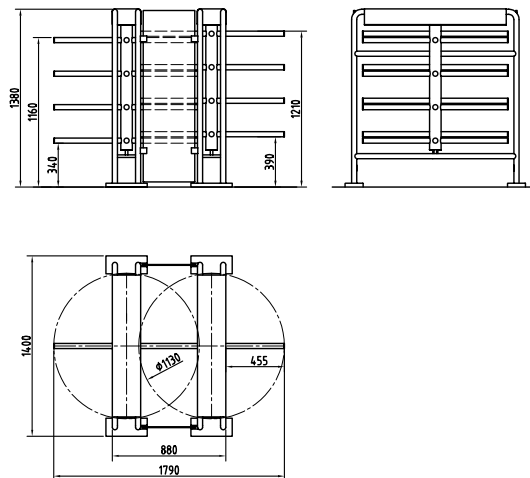
Additional circuit boards for expanding existing inputs and outputs and distribution board (connection of max. 4 OPL possible).

Raising of barrier and personal guiding elements to 1380 mm.

HTS-L01

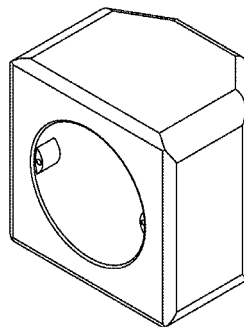


HTS-L02



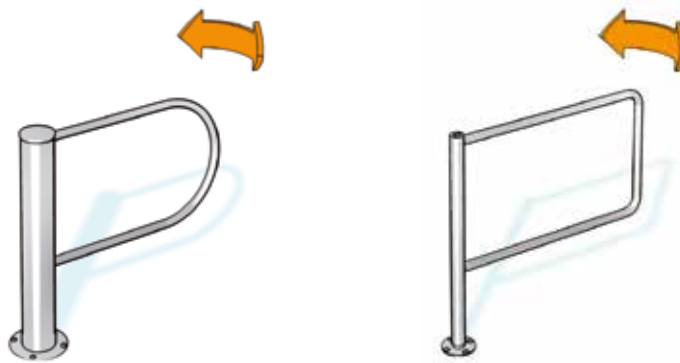
Console 1 in plastic in the same colour as the unit or in RAL 9006.

Width 94 mm
Height 94 mm
Depth 65 mm



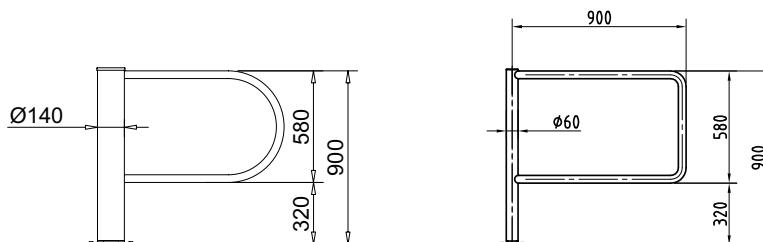
All measurements in mm

Swing Doors

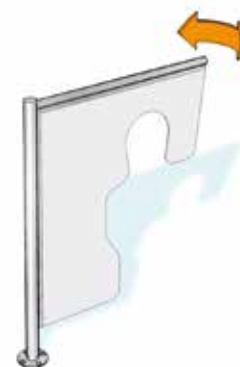
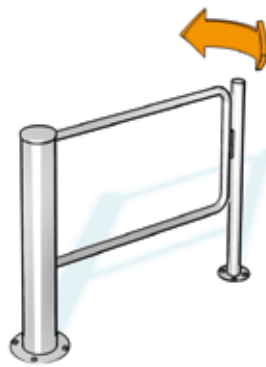
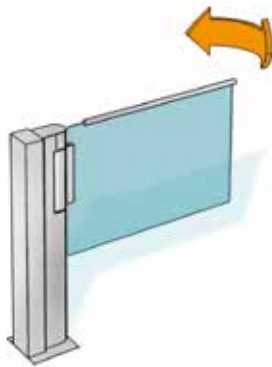


Standard units	HSD-E02	HSD-L01	
Construction	Tubular column	In stainless steel AISI 304, Ø 140.	In stainless steel AISI 304, Ø 60.
	Barrier element	U-shaped, in tubular stainless steel AISI 304, Ø 40.	U-shaped, in tubular stainless steel AISI 304, Ø 40.
	Leaf radius	900	900
	Leaf upper edge	900	900
		Locking, drive and toothed holding brake installed in tubular column.	
Finish		Stainless steel semi-gloss smooth finish.	Stainless steel semi-gloss smooth finish.
Function		Type 2****	Type 0*
		90° opening in entrance and exit directions.	90° opening in entrance and exit directions, mechanically lockable in 3 positions.
Electrical system		Control unit and power supply unit in an external switch cabinet H = 283 / W = 168 / D = 115.	-
		Power supply 110-230 V AC, 50/60 Hz.	-
		Standby power 10 VA.	
Installation		Dowelled on finished floor level, FFL.	Dowelled on finished floor level, FFL.
		Suitable for outdoor installation.	Not suitable for outdoor installation.

- * Type 0 Manual motion
- **** Type 2 Power-assisted motion; servo positioning drive/electrically controlled in 2 directions



All measurements in mm



HSD-L06

Half column (W = 130 / D = 90 mm) as drive housing in stainless steel AISI 304.

Transparent polycarbonate door leaf with horizontal aluminium bar handle painted in RAL 9006.

900

900

Stainless steel semi-gloss smooth finish.

Type 2****

90° opening in entrance and exit directions.

Control unit and power supply unit integrated into the housing.

Power supply 110-230 V AC, 50/60 Hz.

Standby power 10 VA.

Wall mounting/dowelled.

Not suitable for outdoor installation!

HSD-L07

In stainless steel AISI 304, Ø 140.

U-shaped, in tubular stainless steel AISI 304, Ø 40.

960

900

Stainless steel semi-gloss smooth finish.

Type 0*

90° mechanical opening in 1 direction/opposite direction blocked. Locking with electric door opener (in stainless steel post, Ø 60 mm), incl. door check and anti-lift security to prevent opening.

Power supply for electrical door opener 24 V DC supplied by the customer, control by the customer.

-

Dowelled on finished floor level, FFL.

Not suitable for outdoor installation!

HSD-L08

In stainless steel AISI 304, Ø 60 with emergency exit function.

Multi-layer panel with opening for children.

980

1250

Stainless steel semi-gloss smooth finish.

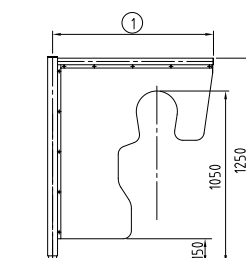
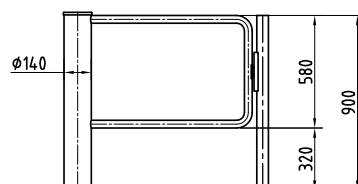
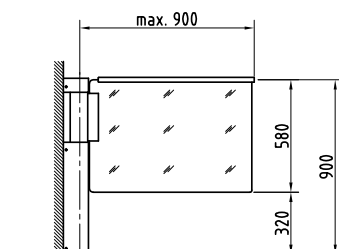
Type 0*

Mechanically free in 2 directions, 90° opening in entrance and exit directions. When the half-height swing door is opened, an acoustic signal sounds. Manual motion from the zero position with a force of 90 Nm on the front door leaf end.

-

Dowelled on finished floor level, FFL.

Not suitable for outdoor installation!



Options (dependent on unit type)

HSD types

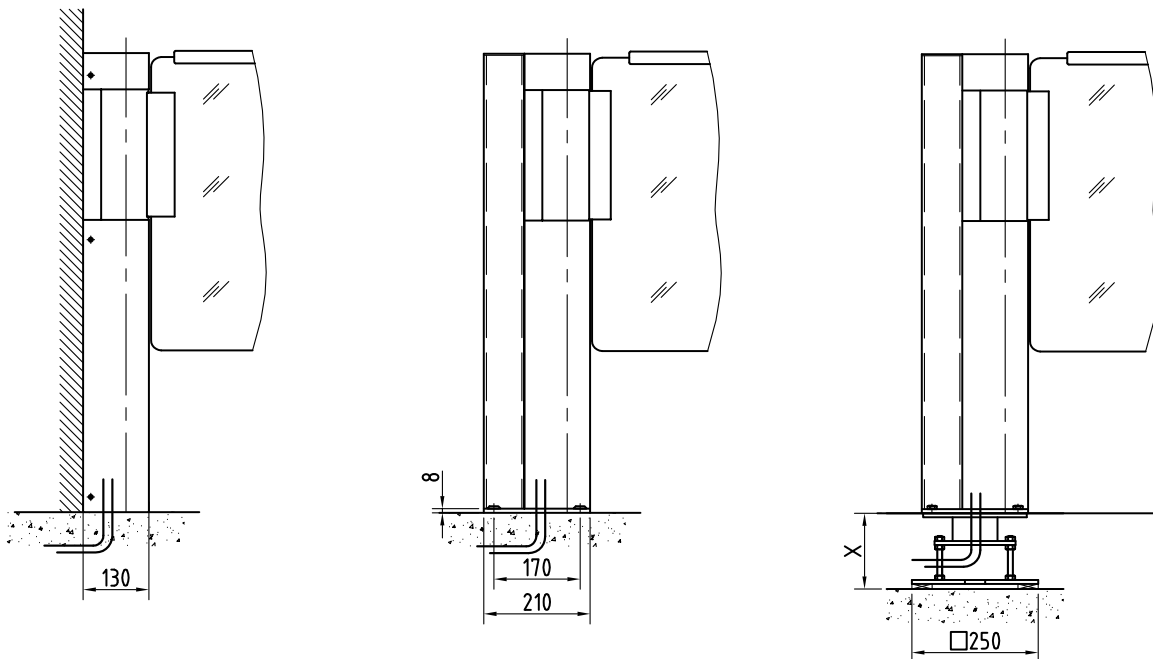
	HSD-E02	HSD-L01	HSD-L06	HSD-L07	HSD-L08
Construction					
Passage width 1000 mm.	•	•		•	
Door leaf panel in TSG (sealed at the top and bottom).	•	•		•	
Special leaf width: minimum 650 mm.	•	•	•	•	•
Special height: Door leaf raised to max. 1200 mm.	•	•		•	
Function					
Master slave or additional chip for linking two units as a half-height double swing door.	•		•		
Emergency and escape route module.	•		•		
Additional emergency button including symbol for connection to the emergency and escape route module.	•		•		
Electrical system					
Operating panels and frame or surface mount housing.	•		•		
End wiring distributor to connect a maximum of four OPL or I/O boards for the activation of a maximum of eight networked units.	•				
Installation					
Mounting plate with variable substructure, measure X = 80 - 180 mm.	•	•		•	
Cast-in with floor element.	•	•		•	

Installation variants for half-height swing doors HSD-L06

Wall mounting

On finished floor level

On sub floor level

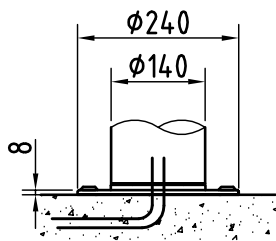


All measurements in mm

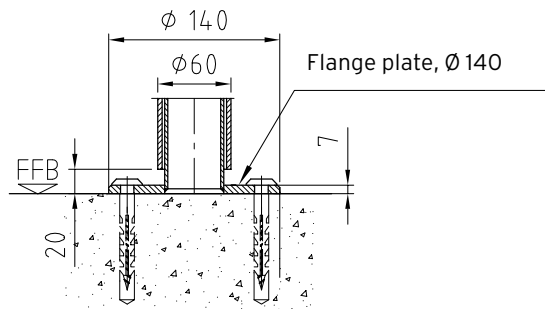
Installation variants for half-height swing doors

Finished floor level

On example HSD-L07

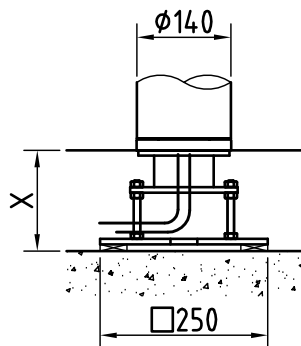


On example HSD-L01

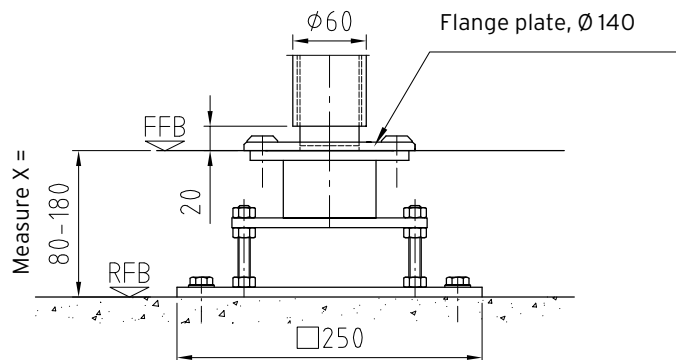


Sub floor level

On example HSD-L07

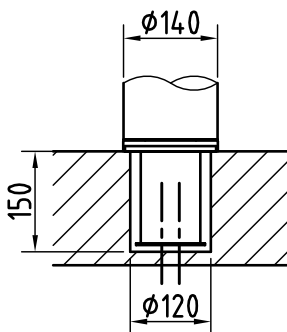


On example HSD-L01

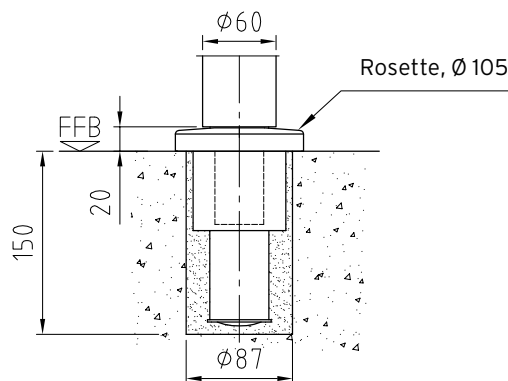


Cast-in

On example HSD-L07

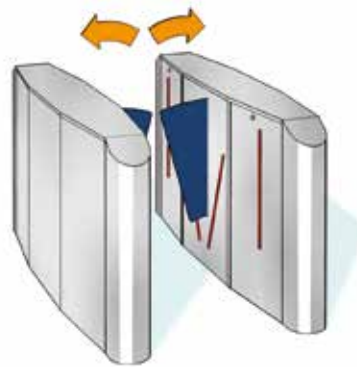


On example HSD-L01



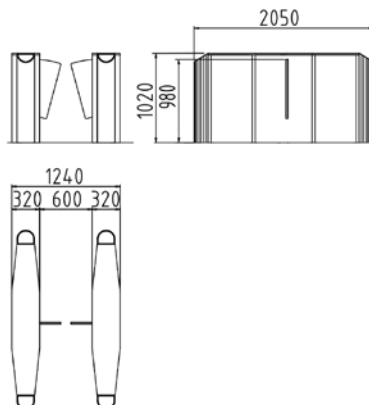
All measurements in mm

Sensor Gate



Standard unit	HSG-L01	
Construction	Passage width	600
	Total width	1240
	Lock height	1020
	Barrier element top edge	980
	Lock length	2050
	Housing and pedestal material	Stainless steel semi-gloss AISI 304.
	Barrier element material	Made of 22 mm polyurethane foam.
Finish	Stainless steel semi-gloss smooth finish.	
Function	Type 2 **** U-shaped, power-assisted motion of both door leaves in the housing. Enhanced monitoring of single-file access in both directions. Monitoring of the movement area of the barrier elements by light grids. Default position can be open or closed.	
Electrical system	Control units and power supply unit integrated into the unit. Power supply 110-230 V AC, 50/60 Hz. Standby power 20 VA. The door leaves move into the open position in the event of a power failure.	
Installation	Dowelled on finished floor level, FFL. Not suitable for outdoor installation!	
Protection class	Housing IP32, components conducting supply voltage IP42.	

**** Type 2 Power-assisted motion;
servo positioning drive/
electrically controlled in 2 directions



All measurements in mm

Options HSG-L01

Construction

Angular pedestals.

Passage width increased to 900 mm.

Electrical system

Installation preparation on flat surface for components provided by the customer.

Plastic instead of stainless steel cover plate.

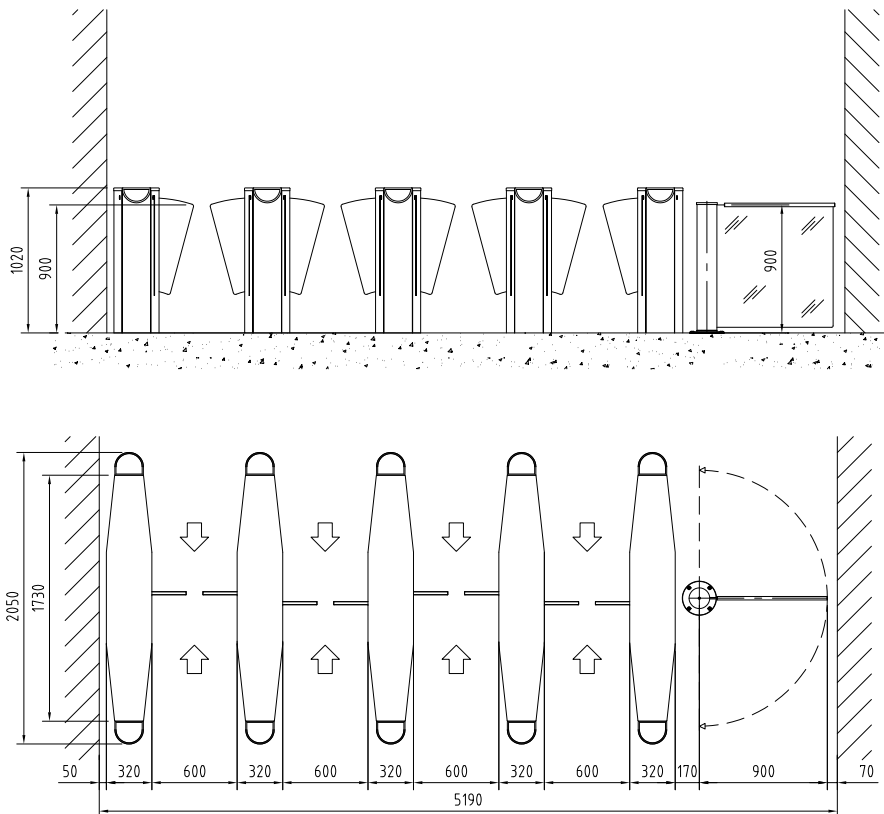
Push button on flat surface for manual single release.

Operating panels and frame or surface mount housing.

Additional circuit boards for expanding existing inputs and outputs.

Various signal devices.

Installation example HSG-L01



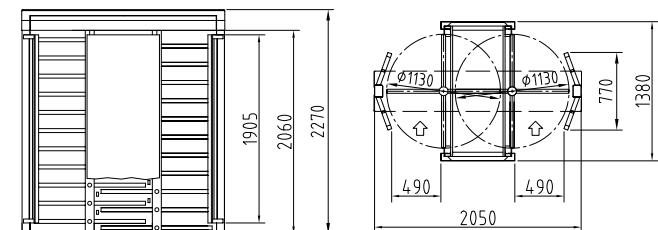
Full-height turnstiles



Standard units	FTS-L01
Construction	
Column diameter	1130
Portal width	2050
Total height	2270
Total height with optional roof R1	-
Total height with optional roof R2	-
Total height with optional roof R3	-
Headroom	2060
Passage width	490
Portal and housing	Steel.
Lockable maintenance opening	Aluminium.
Rotating unit with tubular column, Ø 89 mm	90° each with 11 bar-shaped stainless steel AISI 304 crossbars, Ø 40 with black plastic cover caps.
Barrier element	Steel in the midsection, encased with stainless steel semi-gloss smooth finish on the front sides.
Passage limitation	With filled steel rods.
Special feature	Double unit, space-saving design with interlocking rotating units.
Finish	Rotating unit in stainless steel, glossy finish, hot-dip galvanised steel elements, aluminium elements in RAL 9006.
Function	Type 1.1 ** Type 1.1 *** Type 1.2 **** Type 2 *****
Electrical system	The control unit is integrated into the unit. Power supply 110-230 VAC 50/60 Hz. Standby power 20 VA.
Installation	On finished floor level, FFL.
Protection classes	Housing IP33, components conducting supply voltage IP43.

- * Type 0 Manual motion; mechanically free in 1 direction/ opposite direction blocked
- ** Type 1.1 With power supply unit and micro switch, bolt control unit provided by the customer, optionally with relay
- *** Type 1.1 Manual motion; electrically controlled in 1 direction/ opposite direction blocked
- **** Type 1.2 Manual motion; electrically controlled in 2 directions
- ***** Type 2 Power-assisted motion; servo positioning drive/ electrically controlled in 2 directions

All measurements in mm



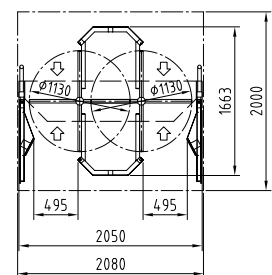
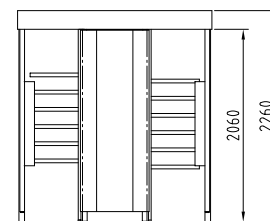
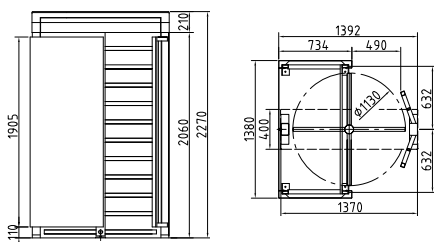


FTS-L05

1130
1370
2270
-
-
-
2060
490
Steel.
Aluminium.
90° each with 11 bar-shaped stainless steel AISI 304 crossbars, Ø 40 mm with black plastic cover caps.
Steel and encased with stainless steel on the front sides.
With filled steel rods.
-
Rotating unit in stainless steel, glossy finish, hot-dip galvanised steel elements, aluminium elements in RAL 9006.
Type 1.1 **
Type 1.1 ***
Type 1.2 ****
Type 2 *****
The control unit is integrated into the unit.
Power supply 110-230 VAC 50/60 Hz. Standby power 20 VA.
On finished floor level, FFL.
Housing IP33, components conducting supply voltage IP43.

FTS-L02

1130
2080
2260
-
-
-
2060
490
Steel frame with aluminium roof covering.
-
90° each with 6 bar-shaped stainless steel AISI 304 crossbars, Ø 40 mm with black plastic cover caps.
Steel in the midsection, encased in stainless steel, semi-gloss smooth finish on the front sides.
Inside with bar in steel, outside with swivelling, motor-driven personal guiding elements in stainless steel AISI 304, semi-gloss smooth finish, for attaching the unit.
Double unit, space-saving design with interlocking rotating units. When closed, the individual parts and rotating unit are protected against vandalism.
Rotating unit in stainless steel, glossy finish, hot-dip galvanised steel elements, aluminium elements in RAL 9006.
Type 1.1 **
Type 1.1 ***
Type 1.2 ****
Type 2 *****
The control unit is integrated into the unit.
Power supply 110-230 VAC 50/60 Hz. Standby power 20 VA.
On finished floor level, FFL.
Housing IP33, components conducting supply voltage IP43.



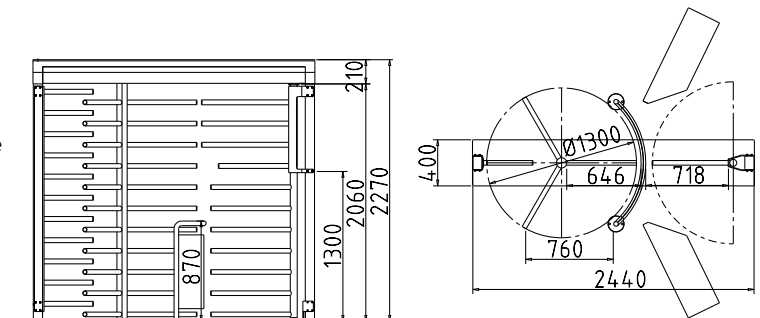
Full-height turnstiles



Standard units	FTS-M01
Construction Column diameter	1300
Width	2440
Total height	2270
Total height with optional roof R1	2390
Total height with optional roof R2	2420
Total height with optional roof R3	2420
Headroom	2060
Passage width	646
Portal and housing	Steel.
Lockable maintenance opening	Aluminium.
Rotating unit with tubular column, Ø 89 mm	120° each with 11 bar-shaped crossbars, Ø 40 mm in glossy stainless steel AISI 304 with black plastic cover caps.
Barrier element	With 11 bar-shaped crossbars, Ø 42 mm in steel.
Passage limitation	Half-height made of curved tubular stainless steel AISI 304 with plate panels.
Special feature	Automatic bicycle door with 7 bar-shaped crossbars, Ø 40 mm in stainless steel. Upper barrier element with 4 bar-shaped crossbars, Ø 42 mm in steel.
Finish	Rotating unit in stainless steel, glossy finish, hot-dip galvanised steel elements, aluminium parts in RAL 9006.
Function	Type 2 ***** Automatic bicycle door with two induction loops and loop detector in two directions, electrically controlled.
Electrical system	The control unit is integrated into the unit. Power supply 110-230 VAC 50/60 Hz. Standby power 20 VA.
Installation	In sleeve foundation, measure X = 150 mm.
Protection classes	Housing IP33, components conducting supply voltage IP43.

- * Type 0 Manual motion; mechanically free in 1 direction/ opposite direction blocked
- ** Type 1.1 With power supply unit and micro switch, bolt control unit provided by the customer, optionally with relay
- *** Type 1.1 Manual motion; electrically controlled in 1 direction/opposite direction blocked
- **** Type 1.2 Manual motion; electrically controlled in 2 directions
- ***** Type 2 Power-assisted motion; servo positioning drive/ electrically controlled in 2 directions

All measurements in mm





FTS-L04

1130
1370
2270
-
-
-
2060
490
Steel.
Aluminium.
90° each with 11 bar-shaped AISI 304 crossbars, Ø 40 mm made of glossy stainless steel AISI 304 steel with black plastic cover caps.
With 11 bar-shaped crossbars, Ø 42 mm in steel.
With filled steel rods.

Rotating unit in stainless steel, glossy finish, hot-dip galvanized steel elements, aluminium elements in RAL 9006.

Type 0 *
Type 1.1 **
Type 1.1 ***
Type 1.2 ****
Type 2 *****

The control unit is integrated into the unit.
Power supply 110-230 V AC, 50/60 Hz.
Standby power 20 VA.
In sleeve foundation, measure X = 150 mm.
Housing IP33, components conducting supply voltage IP43.

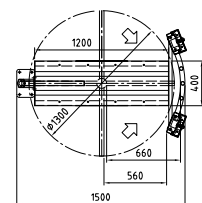
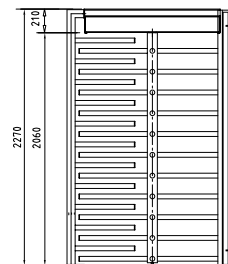
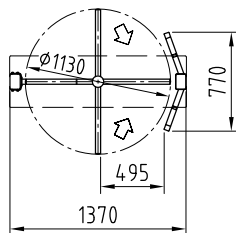
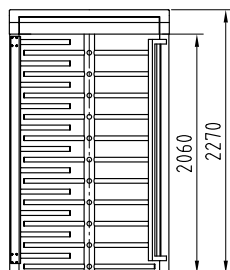
FTS-L06

1300
1500
2270
-
-
-
2060
560
Steel.
Aluminium.
90° each with 11 bar-shaped crossbars, Ø 40 mm in hot-dip galvanized steel with black plastic cover caps.
With 11 bar-shaped crossbars, Ø 42 mm in steel.
With filled steel rods.

Steel elements hot-dip galvanized, aluminium elements in RAL 9006.

Type 1.2****
In the case of a power failure, both directions are locked.

The control unit is integrated into the unit.
Power supply 110-230 V AC, 50/60 Hz.
Standby power 20 VA.
On finished floor level, FFL.



Optional roofs

	FTS-L01	FTS-L05	FTS-M01	FTS-L04
Roof D1 - Depth 1500 or 2770 (height 120)				
Width				
1650		•		•
2330	•			
2720			•	
Roof D2 and Roof D3 - Depth 2820 (fascia 200)				
Width				
2900			•	

Roofs to prevent persons climbing over and for weather protection

Roof D1

Hot-dip galvanized steel sub-construction, trapezoidal plate covering in RAL 9002.

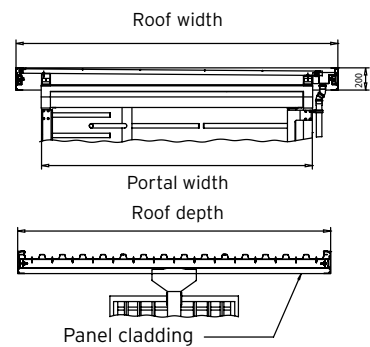
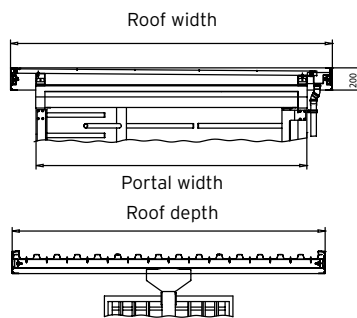
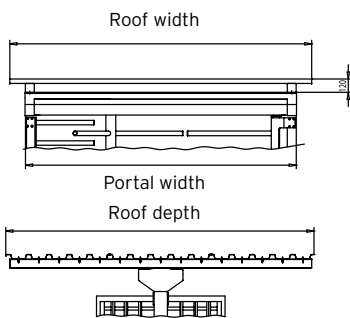
Roof D2

Hot-dip galvanized steel sub-construction, trapezoidal plate covering in RAL 9002 with silver anodized roof fascia and water drainage in PVC grey.

Roof D3

Hot-dip galvanized steel sub-construction, trapezoidal plate covering in RAL 9002 with silver anodized roof fascia and water drainage in PVC grey, roof underside with aluminium panel cladding in lotus white.

Roof D1 - with trapezoidal plate cover	Roof D2 - with trapezoidal plate cover, roof edge profile and water drainage	Roof D3 - with trapezoidal plate cover, roof edge profile, panelled cladding and water drainage
--	--	---



All measurements in mm

Options (dependent on unit type)

FTS types

Construction

Rotating unit plastic-coated according to RAL or plastic-coated according to DB colour of unit, recommended in the case of harsh environmental conditions.

Mechanical swivelling lever unlocking with profile half cylinder in each direction, installed in maintenance opening.

Finish

Steel and aluminium parts additionally finished with plastic coating according to RAL.

Function

Random generator with horn.

Electrical system

Different consoles in plastic or aluminium in the same colour as the unit or in RAL 9006 / aluminium console front plates available in plastic or stainless steel.

Relay for type 1.1.

Operating panels with frame or surface mount housing.

Additional circuit boards for expanding existing inputs and outputs on unit type 2.

Heating.

Various signal devices.

Various lighting and twilight switch options.

Installation

Installation on finished floor level, measure X = 0.

Installation on structural floor level, measure X = 150 mm.

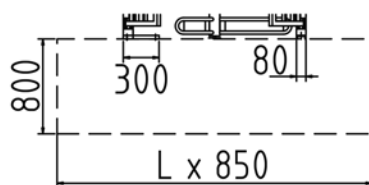
Installation in sleeve foundation, measure X = 150 mm.

Customer assembly of the turnstile unit for "finished floor level" and "sub floor level" installation locations.

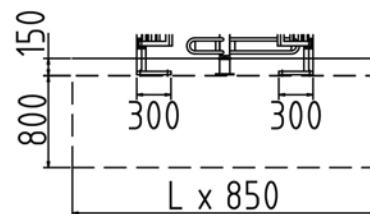
	FTS-L01	FTS-L05	FTS-L02	FTS-M01	FTS-L04	FTS-L06
Rotating unit plastic-coated according to RAL or plastic-coated according to DB colour of unit, recommended in the case of harsh environmental conditions.						•
Mechanical swivelling lever unlocking with profile half cylinder in each direction, installed in maintenance opening.	•	•	•	•	•	•
Steel and aluminium parts additionally finished with plastic coating according to RAL.	•	•	•	•	•	•
Random generator with horn.	•	•	•	•	•	•
Different consoles in plastic or aluminium in the same colour as the unit or in RAL 9006 / aluminium console front plates available in plastic or stainless steel.	•	•			•	
Relay for type 1.1.	•	•	•		•	
Operating panels with frame or surface mount housing.	•	•	•	•	•	•
Additional circuit boards for expanding existing inputs and outputs on unit type 2.	•	•	•	•	•	•
Heating.				•		•
Various signal devices.	•	•	•	•	•	•
Various lighting and twilight switch options.	•	•		•	•	•
Installation on finished floor level, measure X = 0.				•	•	
Installation on structural floor level, measure X = 150 mm.	•	•	•	•	•	
Installation in sleeve foundation, measure X = 150 mm.	•	•				
Customer assembly of the turnstile unit for "finished floor level" and "sub floor level" installation locations.						•

Installation variants

Finished Floor Level FFL



Structural Floor Level SFL



All measurements in mm



BEYOND SECURITY