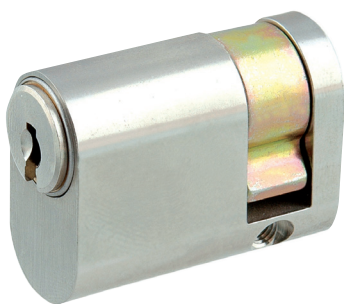


Single Cylinder, Union Profile HZUN



Application:

For all mortise door locks in union (UK) oval profile for key operation on one side of the door. The cam operates the latch and/or bolt of the door lock with key operation.

Specification:

Housing supplied in solid natural brass with nickel plating

Reversible key made from nickel silver

Emergency key function

(Please order emergency key separately, see chapter "Special Functions and keys").

Included with the cylinder:

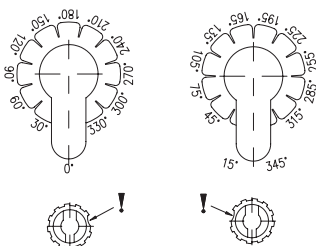
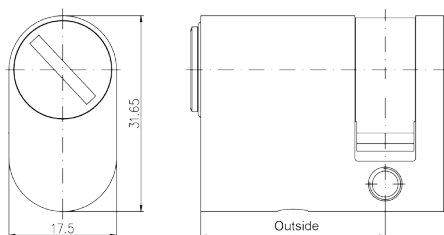
2 reversible keys (Specify separately, see "Special Functions and Keys" for options)

Plastic key clip in dark red for Kaba penta, in dark blue for all other systems

1 cylinder fastening screw M5 x 65 mm

Security Card for ownership registration and ordering duplicate keys

Installation and Maintenance Instructions



Standard setting: 30° to the right with marking point viewed from front side of cylinder.

- 1) Unscrew cover on rear side of cylinder using a coin or screwdriver.
- 2) Remove coupling and cam hub.
- 3) Align cylinder on the template and turn cam to the desired position.
- 4) Slide cam hub into the housing as per the diagram.
- 5) Insert coupling into the cam hub.
- 6) Screw cover back on until it closes even with the housing.

Premier Systems:	6 Kaba penta	7 Kaba quattro pluS	12 Kaba gemini pluS
Patent expired systems	4 Kaba quattro S	2 Kaba gemini S	
Old systems	3 Kaba quattro ¹⁾	1 Kaba gemini ¹⁾	
Dealer systems	5 Kaba expert ²⁾	19 Kaba maTriX ²⁾	
Old dealer system		9 Kaba gemini T ²⁾	

Lengths Standard - each side from 30 to 100 mm in 5 mm steps
Special over 100 mm

Options (See „Special Functions and Keys“ for details)

DF	Duplo function				
BAZ	Construction key	BAZ3	Construction key 3	GF	Emergency key
FL360	Freewheel cam		Special Cams	KT	Electrical contact
FZG	Freewheel cam for gear operated (panic) locks			ST	Steel housing
RB	Relative cam movement			SSW	Weather protection
DIN.ZS	DIN18252 certified: pulling protection			DIN	Drilling protection
VDSB.ZS	VdS certified : Pulling and drilling protection			VDSB	Pulling protection

Standard Surface Finishes

NI - Nickel plated	MS - Brass natural	
--------------------	--------------------	--

Optional Surface Finishes

BH - brown light	MP - Brass polished	CR - Chrome standard
BM - brown medium	MSA - Brass antique	CRM - Chrom dull
BD - brown dark		CRP- Chrome polished
NIC - chemically nickel plated		
GO - gold plated		

Order Code System

System Code.Cylinder Type.Length(function)+Length(function).Surface finish.Option

Example:

6.HZUN.30.NI = penta.single cylinder union profile.30.nickel plated

¹⁾ Kaba gemini and Kaba quattro are only offered for existing master key systems.

²⁾ Kaba expert, Kaba maTriX and Kaba gemini T are only sold to authorized dealers.

Please note that certain options, finishes and dimensions may be subject to extended factory lead times. Please contact our office via email on sales.uk@kaba.com or telephone (0) 870 000 5625.