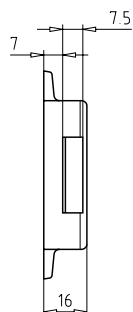
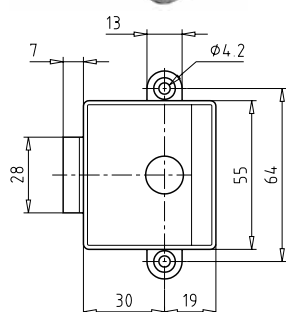


# Latch Lock

## MAS.1882 (ASS)



### Application:

Surface mounted bolt lock for left or right doors with 1/2 throw

### Specification:

Case made from nickel-plated metal, light-weight type  
 Backset 30 mm  
 Cylinder nickel-plated brass (type MZ97-4-044, see page K.115)  
 Cylinder length 26.5 mm  
 Reversible key made from nickel silver

### Included with the lock:

2 reversible keys (See "Special Functions and Keys" for key options)  
 Plastic key clip in dark red for Kaba penta, in dark blue for all other systems  
 Lock insert and screw cap for furniture cylinder 24 mm  
 Rosette for furniture cylinder  $\varnothing$  24 mm  
 2 hex screws M 2.5 x 6 mm  
 1 ea. Lug striking plate  
 Security Card for ownership registration and ordering duplicate keys  
 Installation and Maintenance Instructions

**Premier Systems:** 6 Kaba penta 7 Kaba quattro pluS 12 Kaba gemini pluS

Patent expired systems

4 Kaba quattro S

2 Kaba gemini S

Old systems

3 Kaba quattro<sup>1)</sup>

1 Kaba gemini<sup>1)</sup>

Dealer systems

5 Kaba experT<sup>2)</sup>

19 Kaba maTriX<sup>2)</sup>

Old dealer system

9 Kaba gemini T<sup>2)</sup>

### Options (See „Special Functions and Keys“ for details and further options)

BAZ	Construction key	BAZ3	Construction key 3		
LI	Hinges left	RE	Hinges right		

### Standard Surface Finishes (for lock cylinder)

NI - Nickel plated	MS - Brass natural	
--------------------	--------------------	--

### Optional Surface Finishes

BH - brown light	MP - Brass polished	CR - Chrome standard
BM - brown medium	MSA - Brass antique	CRM - Chrom dull
BD - brown dark		CRP - Chrome polished
NIC - chemically nickel plated		
GO - gold plated		

### Order Code System

System Code.Lock.Type.Surface finish cylinder.Hinge side.Option

Example:

6.MAS.1882.NI.RE = penta.furniture lock.1882.nickel plated cylinder.hinges right

**Please note that certain options, finishes and dimensions may be subject to extended factory lead times. Please contact our office via email on sales.uk@kaba.com or telephone (0) 870 000 5625.**

<sup>1)</sup> Kaba gemini and Kaba quattro are only offered for existing master key systems.

<sup>2)</sup> Kaba experT, Kaba maTriX and Kaba gemini T are only sold to authorized dealers.