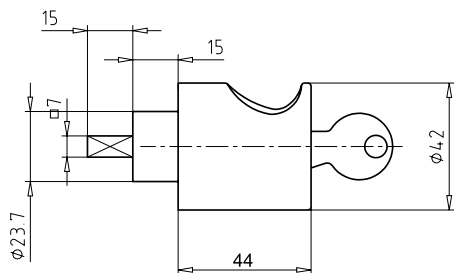


ASS Olive Handle

OL.3561ASS



Application:
Suitable for thicknesses of 16 to 32mm, can be rotated and locked

Specification:
Olive made from nickel-plated metal
Cylinder nickel-plated brass (type 97-4-046, see page K.117)
Reversible key made from nickel silver

Included with the olive handle:
2 reversible keys (See "Special Functions and Keys" for key options)
Plastic key clip in dark red for Kaba penta, in dark blue for all other systems
Square pin 7 mm with grub screw
Security Card for ownership registration and ordering duplicate keys
Installation and Maintenance Instructions

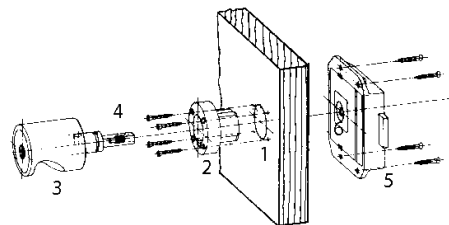
Premier Systems: 6 Kaba penta 7 Kaba quattro pluS 12 Kaba gemini pluS
Patent expired systems 4 Kaba quattro S 2 Kaba gemini S
Old systems 3 Kaba quattro¹⁾ 1 Kaba gemini¹⁾
Dealer systems 5 Kaba experT²⁾ 19 Kaba maTriX²⁾
Old dealer system 9 Kaba gemini T²⁾

- Installation:**
1. Drill \varnothing 24 mm
 2. Screw on rosette (open groove on the bottom)
 3. Insert olive with retracted locking pin (bottom recessed grip)
 4. Secure the handle part by tightening the grub screw in the square pin
 5. Pre-lock the olive locking pin (using the key)
 6. Screw on the lock (bolt undone)

Length 44 mm

Options (See „Special Functions and Keys“ for details)

BAZ	Construction key	BAZ3	Construction key 3	Emergency key
7616	Locking adapter 7mm for use with furniture locks			



Parts List

1. Door drilled 24mm
2. Rosette
3. Olive
4. Grub screw (in square pin)
5. Door Lock
6. Staking plate

Order Code System
System Code.Cylinder.Type.Option

Example:
6. OL.3561ASS = penta.olive 3516 with cylinder
6. OL.3561.INKL.7616 = penta.olive 3516 with cylinder.including 7616 stake

Please note that certain options, finishes and dimensions may be subject to extended factory lead times. Please contact our office via email on sales.uk@kaba.com or telephone (0) 870 000 5625.

¹⁾ Kaba gemini and Kaba quattro are only offered for existing master key systems.
²⁾ Kaba experT, Kaba maTriX and Kaba gemini T are only sold to authorized dealers.