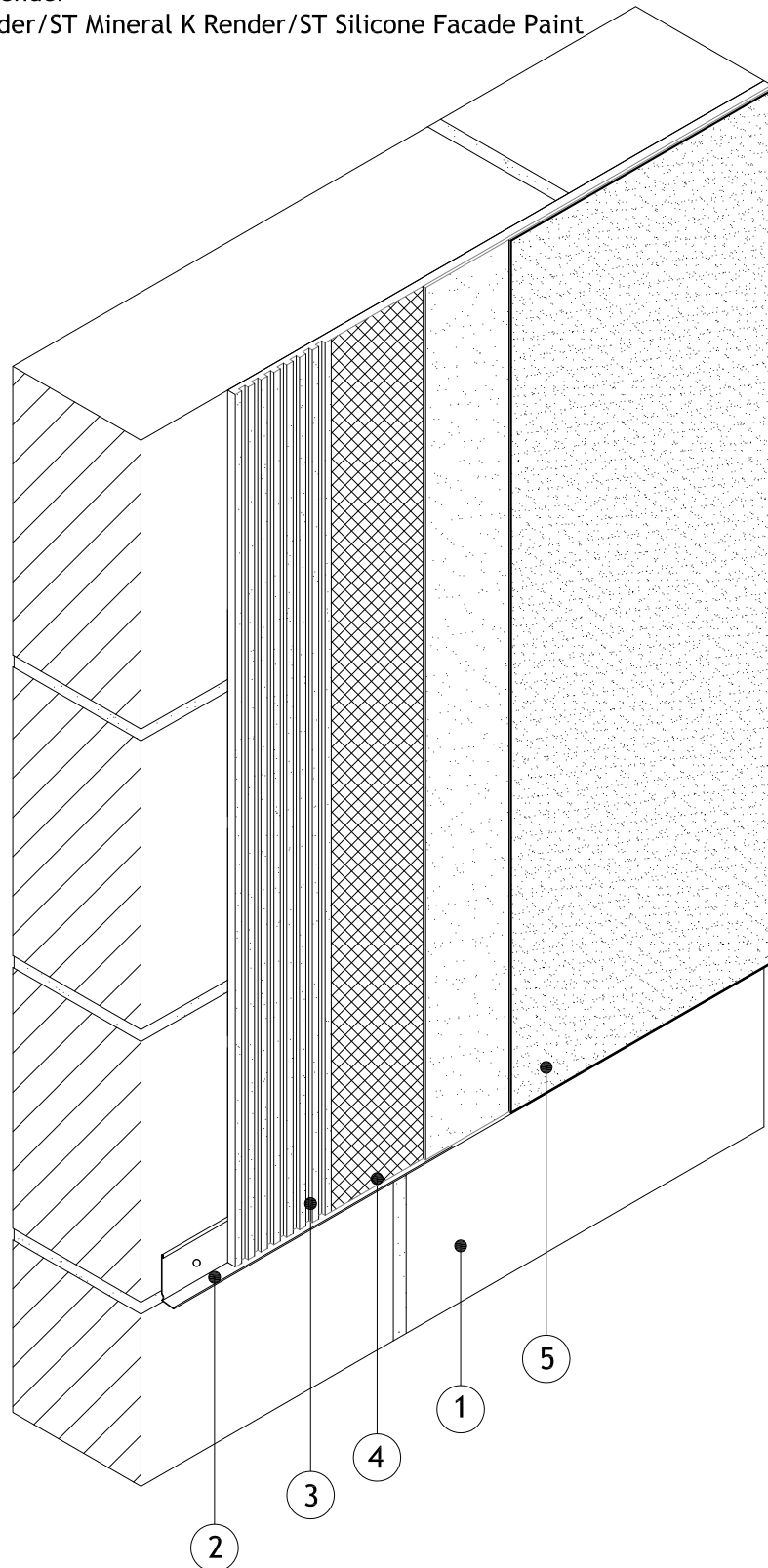


Items:-

- 1 - Existing Substrate
- 2 - Bellcast Bead (as per specification)
- 3 - M.R. S5 Polymer Plain Render
- 4 - Alumasc Scrim Reinforcement bedded into top third of the M.R. S5 Polymer Plain Render
- 5 - ST Silkolitt Silicone Render/ST Mineral K Render/ST Silicone Facade Paint

ALUMASC
INSULATED RENDERS

**Notes.**

1. Refer to Alumasc E.B.P. Ltd for Technical Assistance regarding specification for Alumasc Render applications.



ALUMASC EXTERIOR BUILDING PRODUCTS LTD
White House Works, Bold Road, Sutton
St Helens, Merseyside, WA9 4JG, UK
Telephone: +44 (0)1744 648400
Facsimile: +44 (0)1744 648401
Website: www.alumascfacades.co.uk
E-mail: technical@alumasc-exteriors.co.uk

Drawing title:

Typical Silicone Render Detail
Isometric Detail

Detail is valid only when approved by the Architect / Contractor concerned

Drawing No:
ST-M-01-01

Scale:
NTS

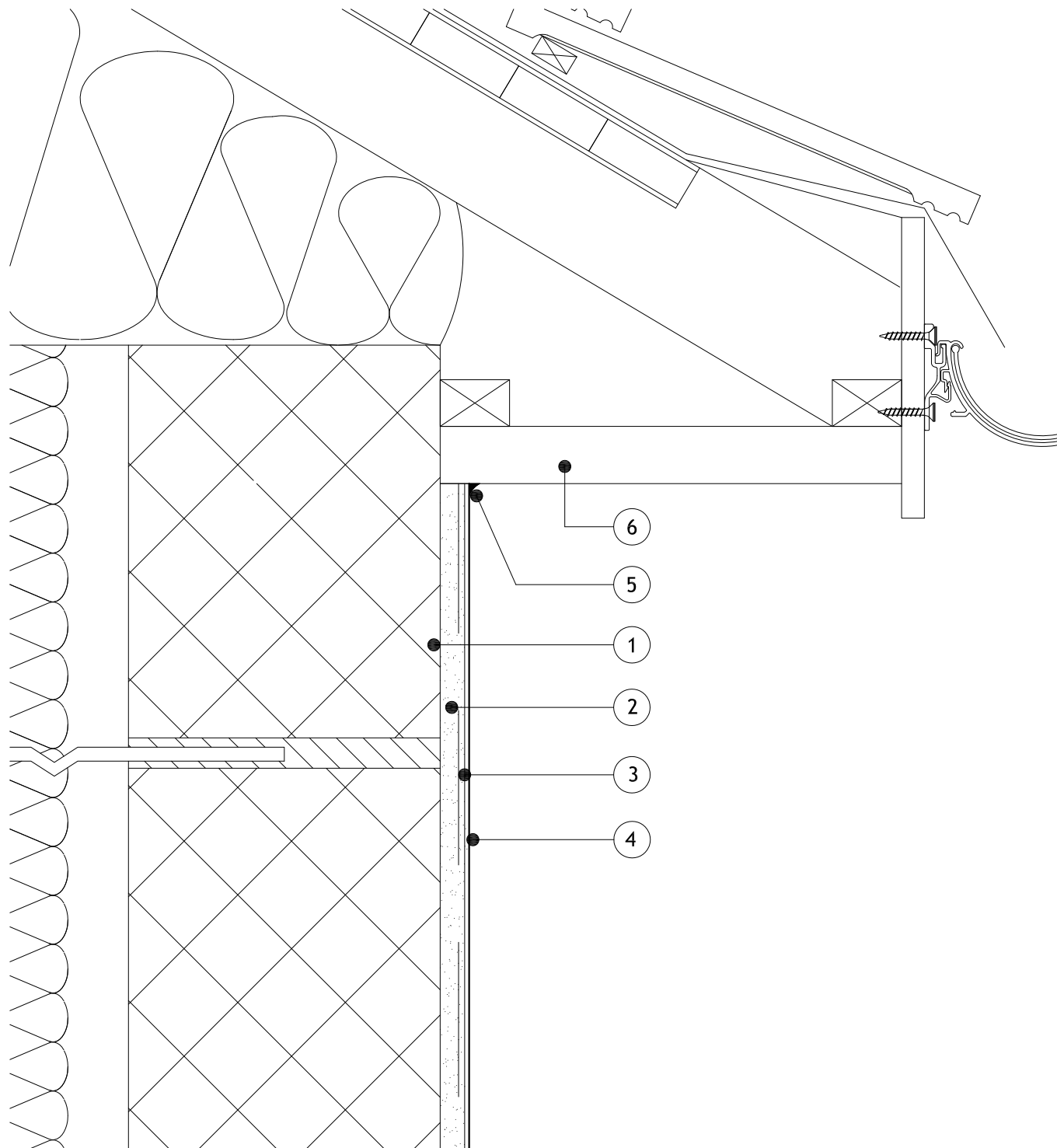
Revision:

Date:
01.08.2012



Items:-

- 1 - Existing substrate
- 2 - M.R. S5 Polymer Plain Render
- 3 - Alumasc Scrim Reinforcement bedded into top third of the M.R. S5 Polymer Plain Render
- 4 - ST Silkolitt Silicone Render/ST Mineral K Render/ST Silicone Facade Paint
- 5 - Alumasc Low Modulus Silicone Sealant
- 6 - Roof Eaves Timber Batten



Notes.

1. Refer to Alumasc E.B.P. Ltd for Technical Assistance regarding specification for Alumasc Render applications.



ALUMASC EXTERIOR BUILDING PRODUCTS LTD
 White House Works, Bold Road, Sutton
 St Helens, Merseyside, WA9 4JG, UK
 Telephone: +44 (0)1744 648400
 Facsimile: +44 (0)1744 648401
 Website: www.alumascfacades.co.uk
 E-mail: technical@alumasc-exteriors.co.uk

Drawing title:

Typical Silicone Render Detail
 Eaves Detail

Detail is valid only when approved by the Architect / Contractor concerned

Drawing No:
 ST-M-03-01

Scale:
 NTS

Revision:

Date:
 01.08.2012

© Copyright reserved

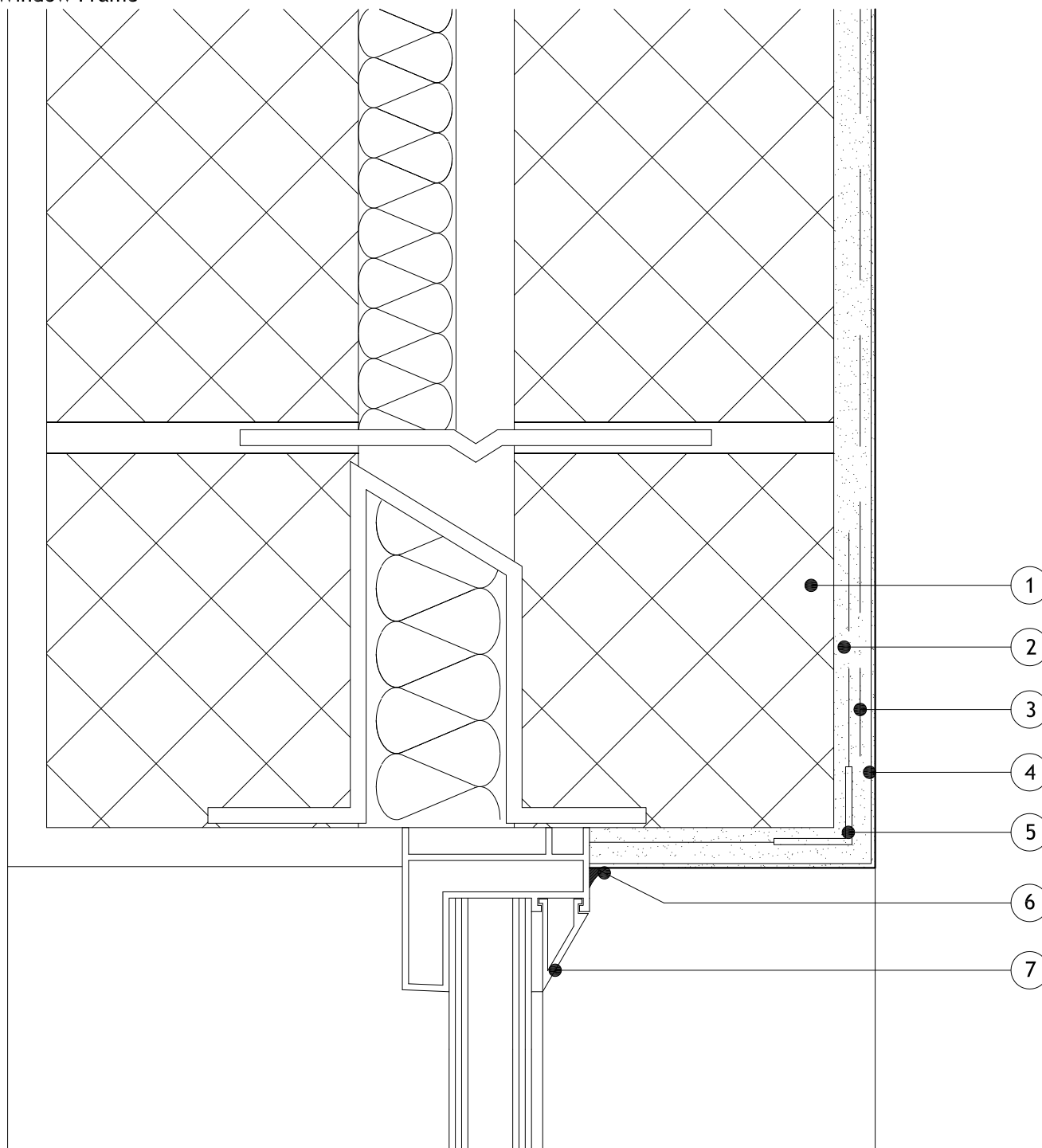
Note: This drawing is intended to illustrate the correct application of Alumasc products only. All other elements are shown indicatively and it is not the intention to detail building construction.

Items:-

- 1 - Existing substrate
- 2 - M.R. S5 Polymer Plain Render
- 3 - Alumasc Scrim Reinforcement bedded into top third of the M.R. S5 Polymer Plain Render
- 4 - ST Silkolitt Silicone Render/ST Mineral K Render/ST Silicone Facade Paint
- 5 - Corner Bead (as per specification)
- 6 - Alumasc Low Modulus Silicone Sealant.
- 7 - Window Frame



INSULATED RENDERS



Notes.

- 1. Refer to Alumasc E.B.P. Ltd for Technical Assistance regarding specification for Alumasc Render applications.

Note: This drawing is intended to illustrate the correct application of Alumasc products only. All other elements are shown indicatively and it is not the intention to detail building construction.



ALUMASC EXTERIOR BUILDING PRODUCTS LTD
 White House Works, Bold Road, Sutton
 St Helens, Merseyside, WA9 4JG, UK
 Telephone: +44 (0)1744 648400
 Facsimile: +44 (0)1744 648401
 Website: www.alumascfacades.co.uk
 E-mail: technical@alumasc-exteriors.co.uk

Drawing title:

Typical Silicone Render Detail
 Window Head Detail

Detail is valid only when approved by the Architect / Contractor concerned

Drawing No:
 ST-M-03-02

Scale:
 NTS

Revision:

Date:
 01.08.2012

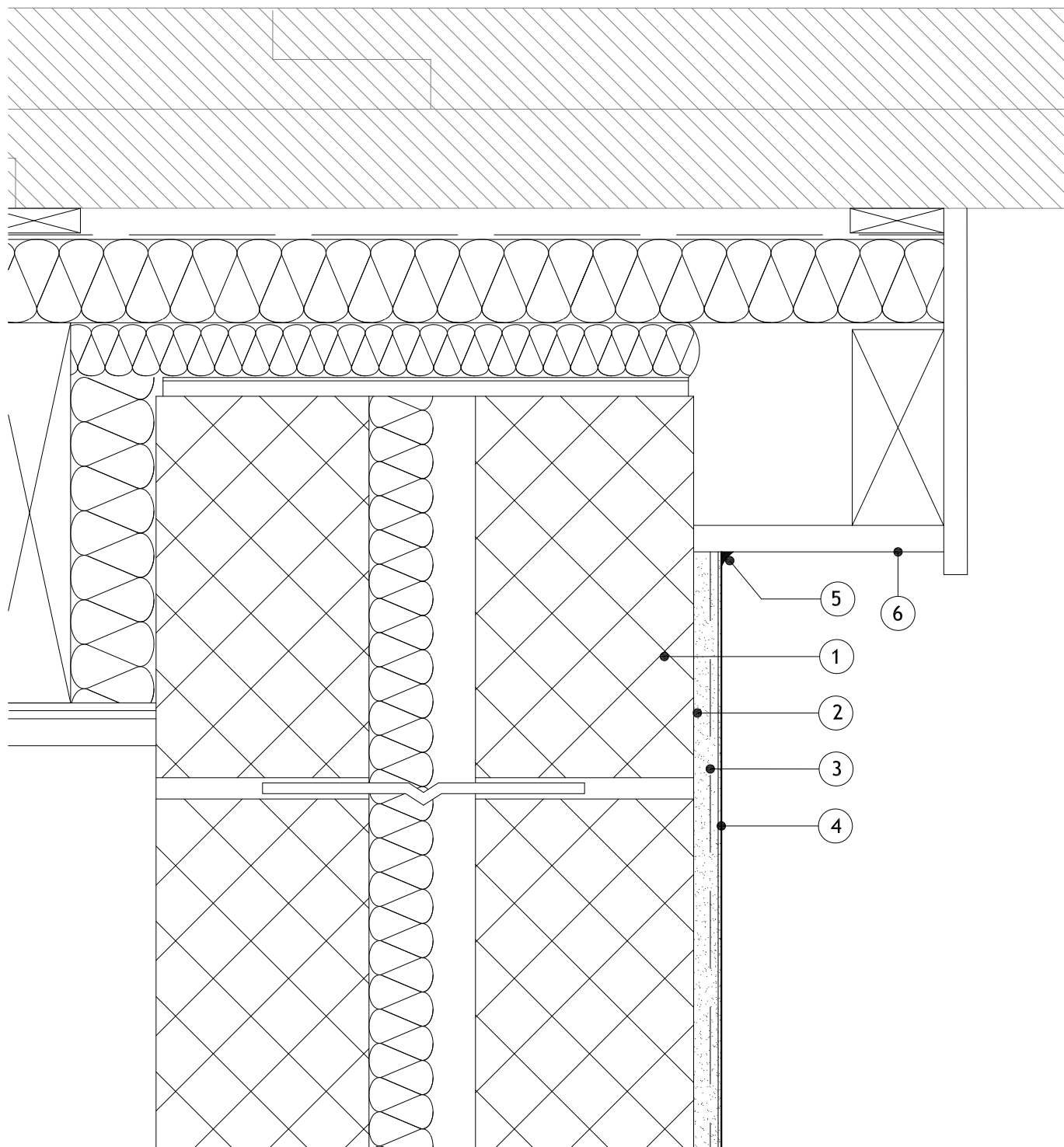
© Copyright reserved

Items:-

- 1 - Existing substrate
- 2 - M.R. S5 Polymer Plain Render
- 3 - Alumasc Scrim Reinforcement bedded into top third of the M.R. S5 Polymer Plain Render
- 4 - ST Silkolitt Silicone Render/ST Mineral K Render/ST Silicone Facade Paint
- 5 - Alumasc Low Modulus Silicone Sealant.
- 6 - Soffit Board



INSULATED RENDERS



Notes.

1. Refer to Alumasc E.B.P. Ltd for Technical Assistance regarding specification for Alumasc Render applications.



ALUMASC EXTERIOR BUILDING PRODUCTS LTD
 White House Works, Bold Road, Sutton
 St Helens, Merseyside, WA9 4JG, UK
 Telephone: +44 (0)1744 648400
 Facsimile: +44 (0)1744 648401
 Website: www.alumascfacades.co.uk
 E-mail: technical@alumasc-exteriors.co.uk

Drawing title:

**Typical Silicone Render Detail
 Gable Roof Detail**

Detail is valid only when approved by the Architect / Contractor concerned

Drawing No:
 ST-M-03-03

Scale:
 NTS

Revision:

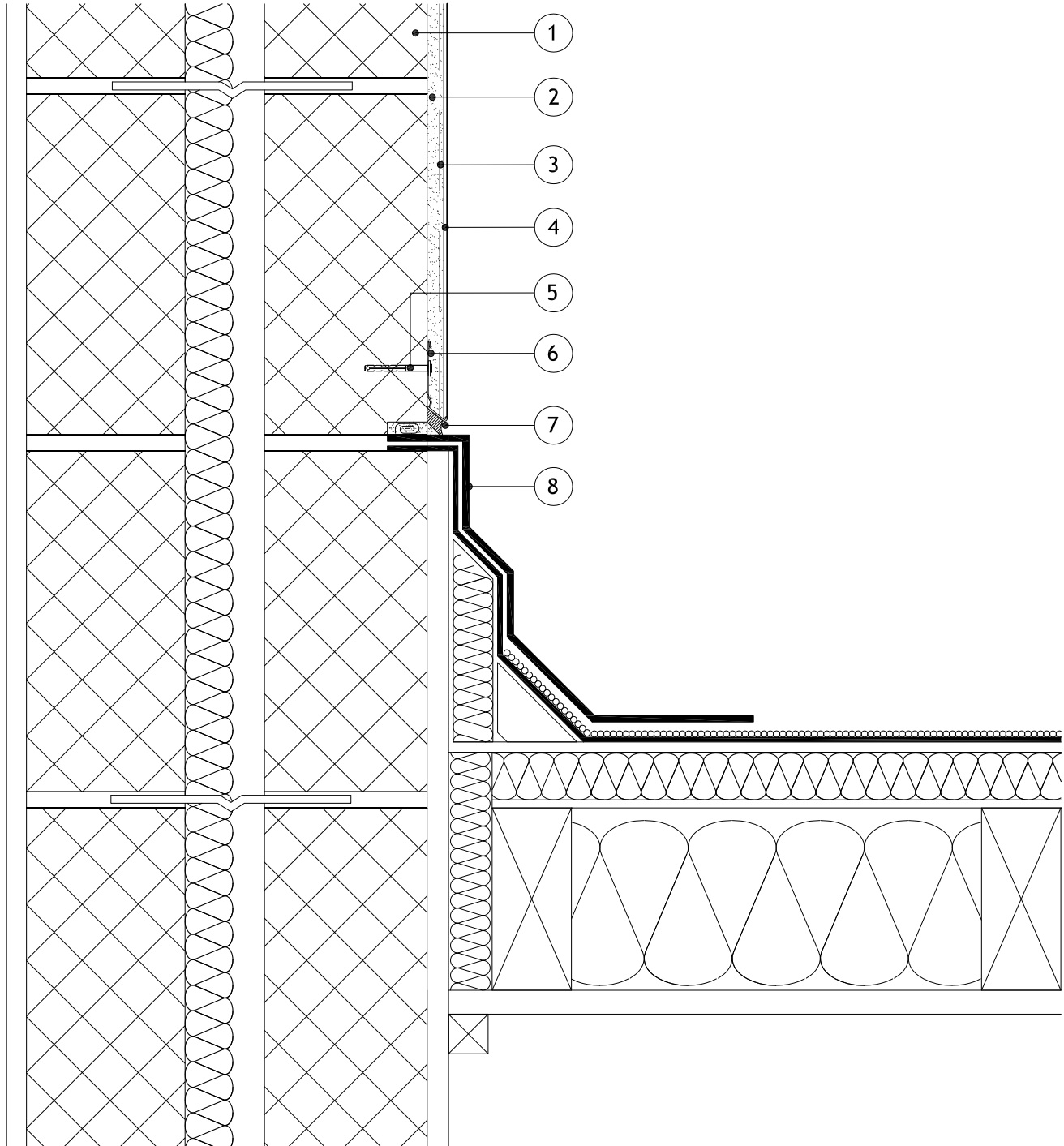
Date:
 01.08.2012

© Copyright reserved

Note: This drawing is intended to illustrate the correct application of Alumasc products only. All other elements are shown indicatively and it is not the intention to detail building construction.

Items:-

- 1 - Existing substrate
- 2 - M.R. S5 Polymer Plain Render
- 3 - Alumasc Scrim Reinforcement bedded into top third of the M.R. S5 Polymer Plain Render
- 4 - ST Silkolitt Silicone Render/ST Mineral K Render/ST Silicone Facade Paint
- 5 - Approved Mechanical Fixing
- 6 - Bellcast Bead (as per specification)
- 7 - Alumasc Low Modulus Silicone Sealant
- 8 - Roofing Detail



Notes.

1. Refer to Alumasc E.B.P. Ltd for Technical Assistance regarding specification for Alumasc Render applications.



ALUMASC EXTERIOR BUILDING PRODUCTS LTD
 White House Works, Bold Road, Sutton
 St Helens, Merseyside, WA9 4JG, UK
 Telephone: +44 (0)1744 648400
 Facsimile: +44 (0)1744 648401
 Website: www.alumascfacades.co.uk
 E-mail: technical@alumasc-exteriors.co.uk

Drawing title:

**Typical Silicone Render Detail
 Flat Roof Detail**

Detail is valid only when approved by the Architect / Contractor concerned

Drawing No:
 ST-M-03-04

Scale:
 NTS

Revision:

Date:
 01.08.2012

© Copyright reserved

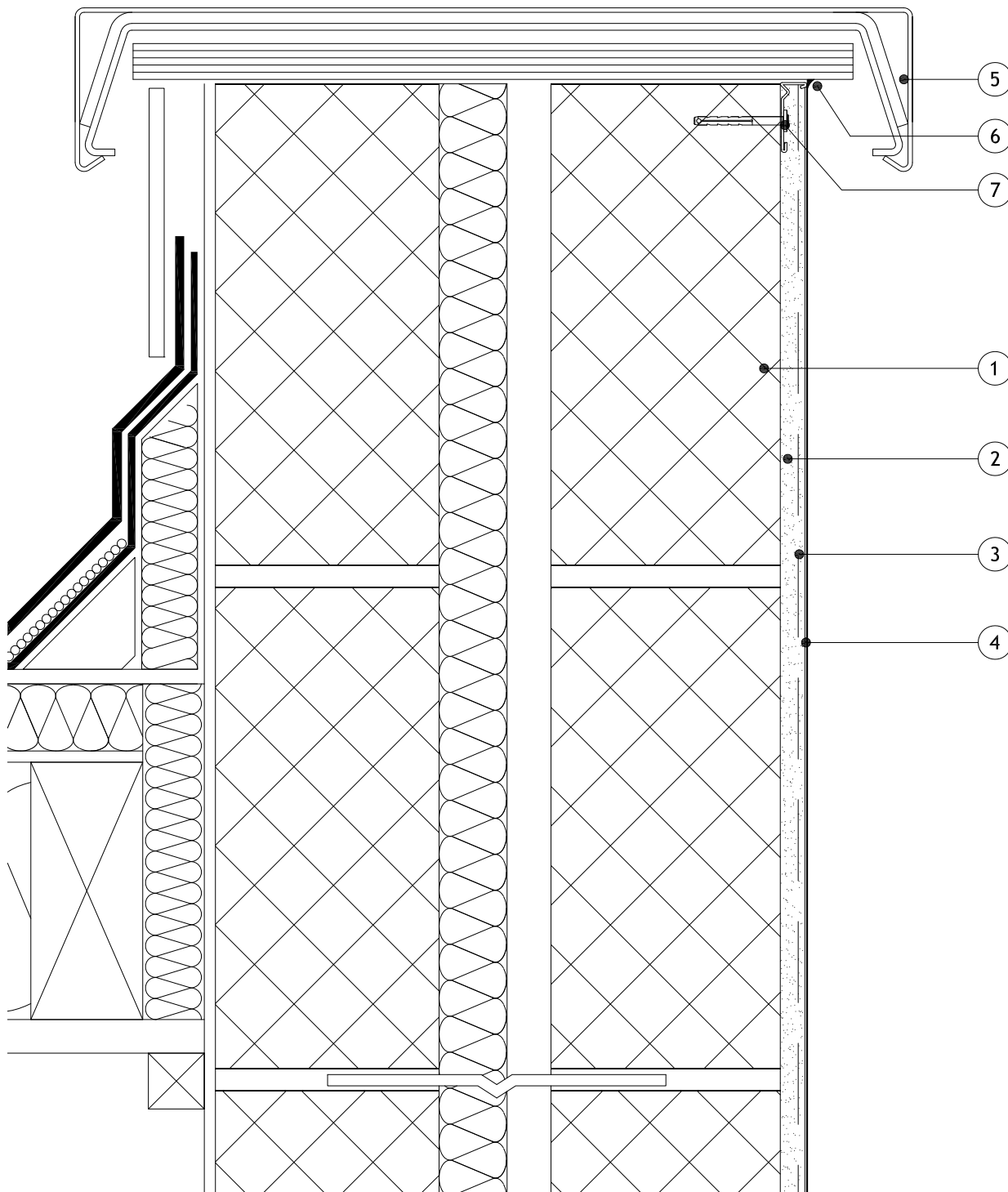
Note: This drawing is intended to illustrate the correct application of Alumasc products only. All other elements are shown indicatively and it is not the intention to detail building construction.

Items:-

- 1 - Existing substrate
- 2 - M.R. S5 Polymer Plain Render
- 3 - Alumasc Scrim Reinforcement bedded into top third of the M.R. S5 Polymer Plain Render
- 4 - ST Silkolitt Silicone Render/ST Mineral K Render/ST Silicone Facade Paint
- 5 - Alumasc Skyline Coping
- 6 - Alumasc Low Modulus Silicone Sealant
- 7 - Stop Bead (as per specification)



INSULATED RENDERS



Notes.

- 1. Refer to Alumasc E.B.P. Ltd for Technical Assistance regarding specification for Alumasc Render applications.



ALUMASC EXTERIOR BUILDING PRODUCTS LTD
 White House Works, Bold Road, Sutton
 St Helens, Merseyside, WA9 4JG, UK
 Telephone: +44 (0)1744 648400
 Facsimile: +44 (0)1744 648401
 Website: www.alumascfacades.co.uk
 E-mail: technical@alumasc-exteriors.co.uk

Drawing title:

**Typical Silicone Render Detail
 Parapet Detail**

Detail is valid only when approved by the Architect / Contractor concerned

Drawing No:
 ST-M-03-05

Scale:
 NTS

Revision:

Date:
 01.08.2012

© Copyright reserved

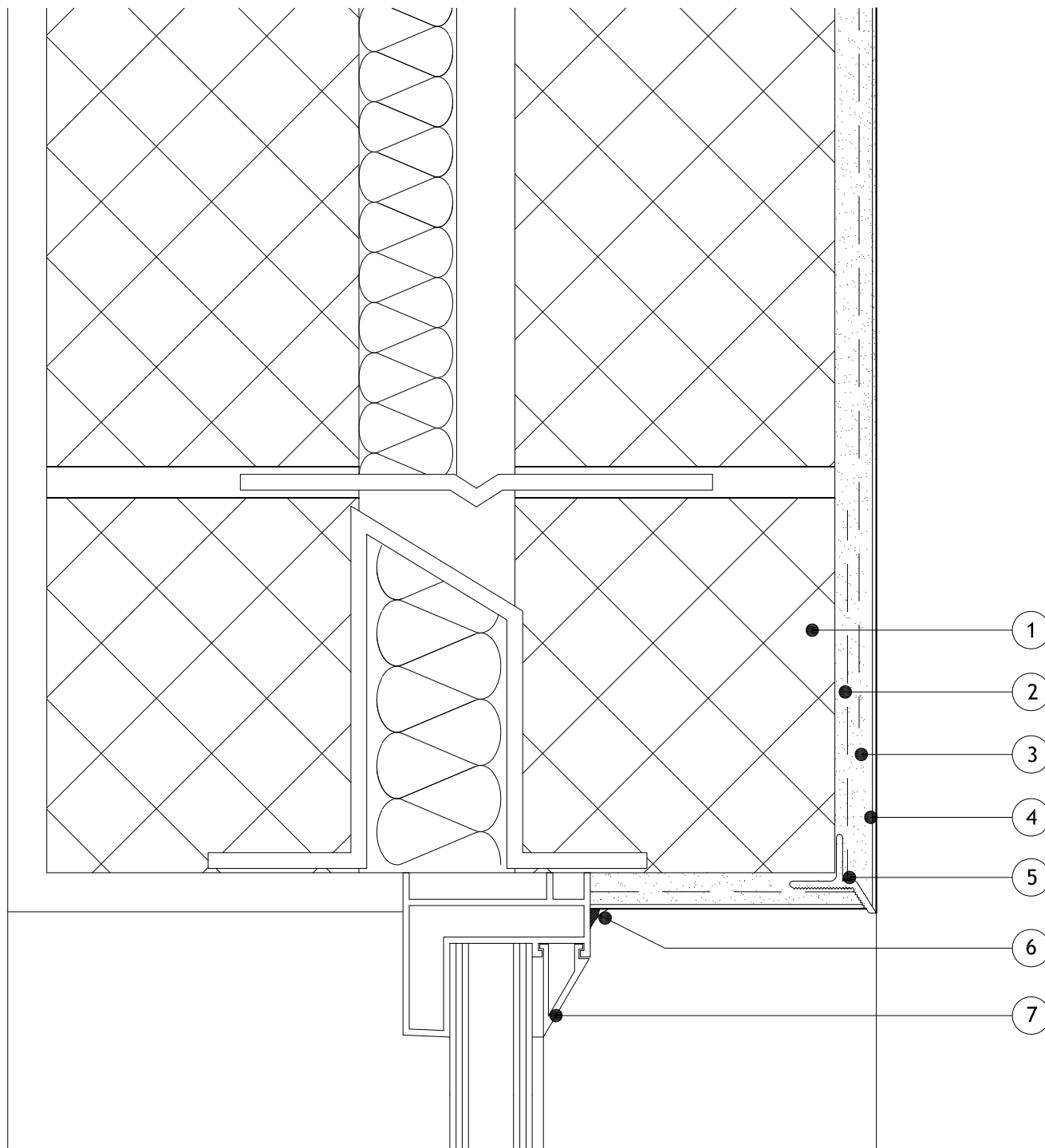
Note: This drawing is intended to illustrate the correct application of Alumasc products only. All other elements are shown indicatively and it is not the intention to detail building construction.

Items:-

- 1 - Existing substrate
- 2 - M.R. S5 Polymer Plain Render
- 3 - Alumasc Scrim Reinforcement bedded into top third of the M.R. S5 Polymer Plain Render
- 4 - ST Silkolitt Silicone Render/ST Mineral K Render/ST Silicone Facade Paint
- 5 - Corner Drip Bead (as per specification)
- 6 - Alumasc Low Modulus Silicone Sealant
- 7 - Window Frame



INSULATED RENDERS



Notes.

1. Refer to Alumasc E.B.P. Ltd for Technical Assistance regarding specification for Alumasc Render applications.



ALUMASC EXTERIOR BUILDING PRODUCTS LTD
 White House Works, Bold Road, Sutton
 St Helens, Merseyside, WA9 4JG, UK
 Telephone: +44 (0)1744 648400
 Facsimile: +44 (0)1744 648401
 Website: www.alumascfacades.co.uk
 E-mail: technical@alumasc-exteriors.co.uk

Drawing title:

**Typical Silicone Render Detail
 Window Head Drip Bead Detail**

Detail is valid only when approved by the Architect / Contractor concerned

Drawing No:
ST-M-03-06

Scale:
NTS

Revision:

Date:
01.08.2012

© Copyright reserved

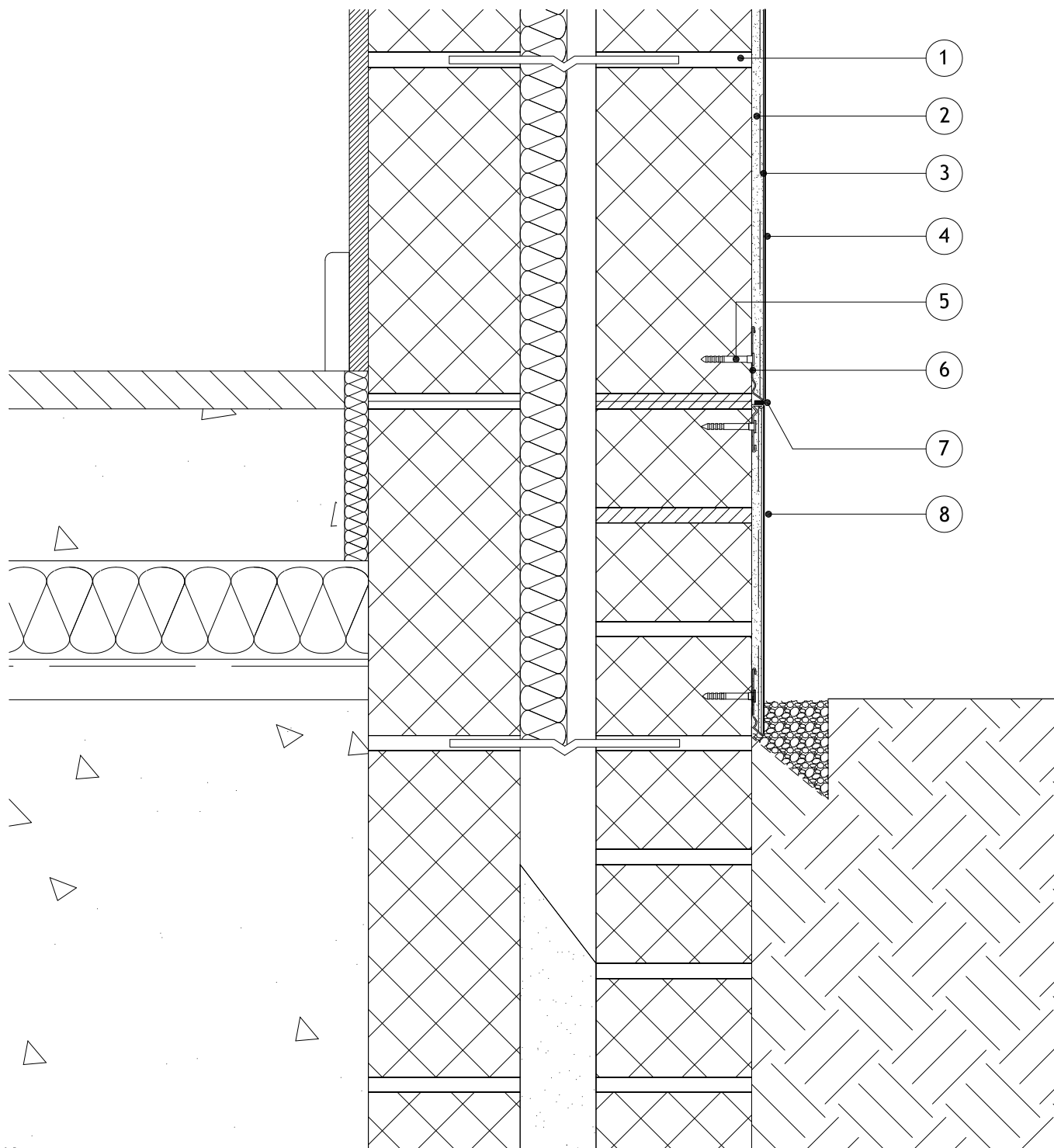
Note: This drawing is intended to illustrate the correct application of Alumasc products only. All other elements are shown indicatively and it is not the intention to detail building construction.

Items:-

- 1 - Existing substrate
- 2 - M.R. S5 Polymer Plain Render
- 3 - Alumasc Scrim Reinforcement bedded into top third of the M.R. S5 Polymer Plain Render
- 4 - ST Silkolitt Silicone Render/ST Mineral K Render/ST Silicone Facade Paint
- 5 - Approved Mechanical Fixing (as per specification)
- 6 - Bellcast Bead (as per specification)
- 7 - Alumasc Low Modulus Silicone Sealant
- 8 - M.R. S2 Polymer Plain Render for below DPC



INSULATED RENDERS



Notes.

1. Refer to Alumasc E.B.P. Ltd for Technical Assistance regarding specification for Alumasc Render applications.



ALUMASC EXTERIOR BUILDING PRODUCTS LTD
 White House Works, Bold Road, Sutton
 St Helens, Merseyside, WA9 4JG, UK
 Telephone: +44 (0)1744 648400
 Facsimile: +44 (0)1744 648401
 Website: www.alumascfacades.co.uk
 E-mail: technical@alumasc-exteriors.co.uk

Drawing title:

Typical Silicone Render Detail
 Below DPC Detail

Detail is valid only when approved by the Architect / Contractor concerned

Drawing No:
 ST-M-04-01

Scale:
 NTS

Revision:

Date:
 01.08.2012

© Copyright reserved

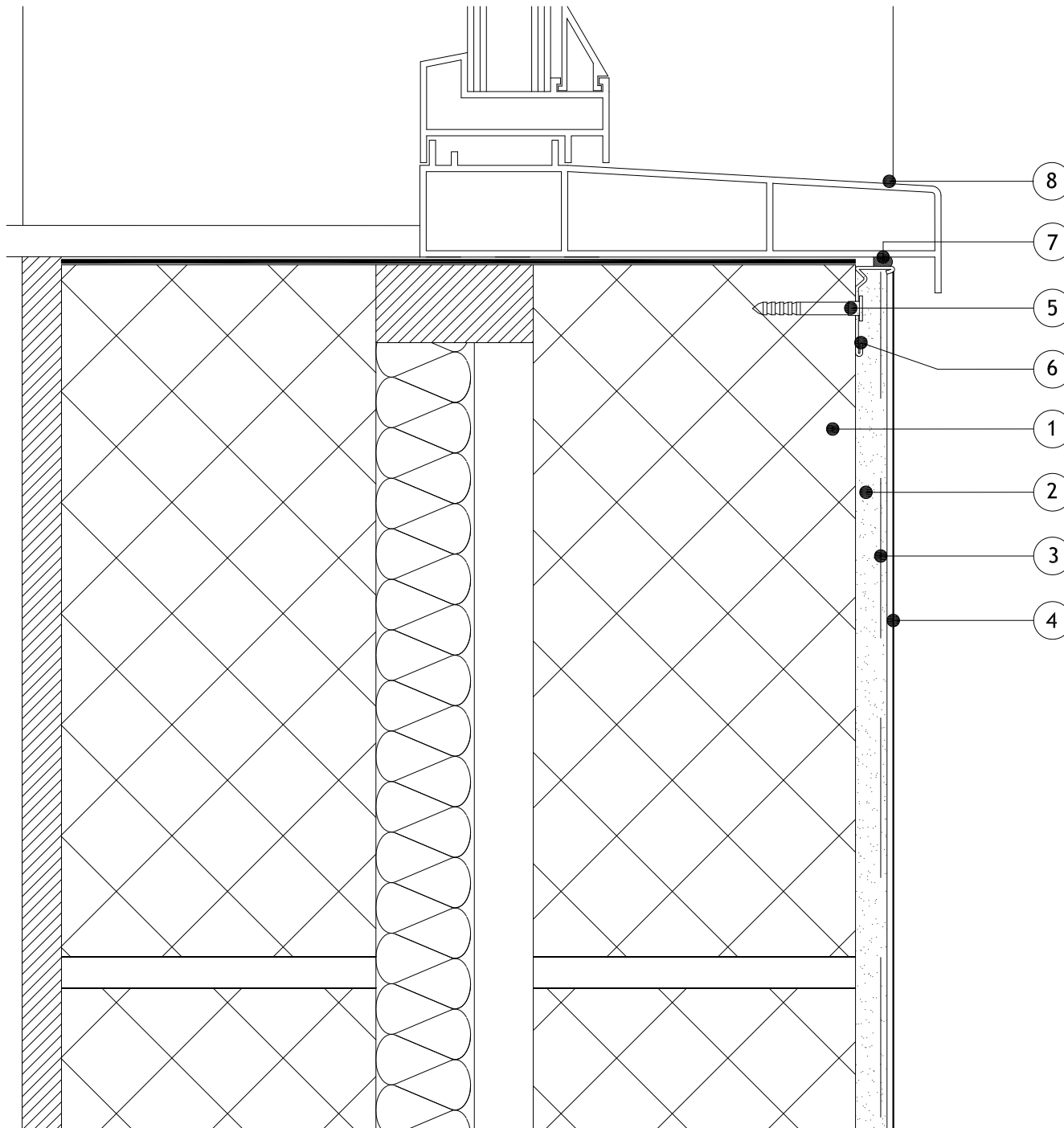
Note: This drawing is intended to illustrate the correct application of Alumasc products only. All other elements are shown indicatively and it is not the intention to detail building construction.

Items:-

- 1 - Existing substrate
- 2 - M.R. S5 Polymer Plain Render
- 3 - Alumasc Scrim Reinforcement bedded into top third of the M.R. S5 Polymer Plain Render
- 4 - ST Silkolitt Silicone Render/ST Mineral K Render/ST Silicone Facade Paint
- 5 - Approved Mechanical Fixing
- 6 - Stop Bead (as per specification if required)
- 7 - Alumasc Low Modulus Silicone Sealant
- 8 - Window Cill



INSULATED RENDERS



Notes.

1. Refer to Alumasc E.B.P. Ltd for Technical Assistance regarding specification for Alumasc Render applications.



ALUMASC EXTERIOR BUILDING PRODUCTS LTD
 White House Works, Bold Road, Sutton
 St Helens, Merseyside, WA9 4JG, UK
 Telephone: +44 (0)1744 648400
 Facsimile: +44 (0)1744 648401
 Website: www.alumascfacades.co.uk
 E-mail: technical@alumasc-exteriors.co.uk

Drawing title:

**Typical Silicone Render Detail
 Undecill Detail**

Detail is valid only when approved by the Architect / Contractor concerned

Drawing No:
 ST-M-04-02

Scale:
 NTS

Revision:

Date:
 01.08.2012

© Copyright reserved

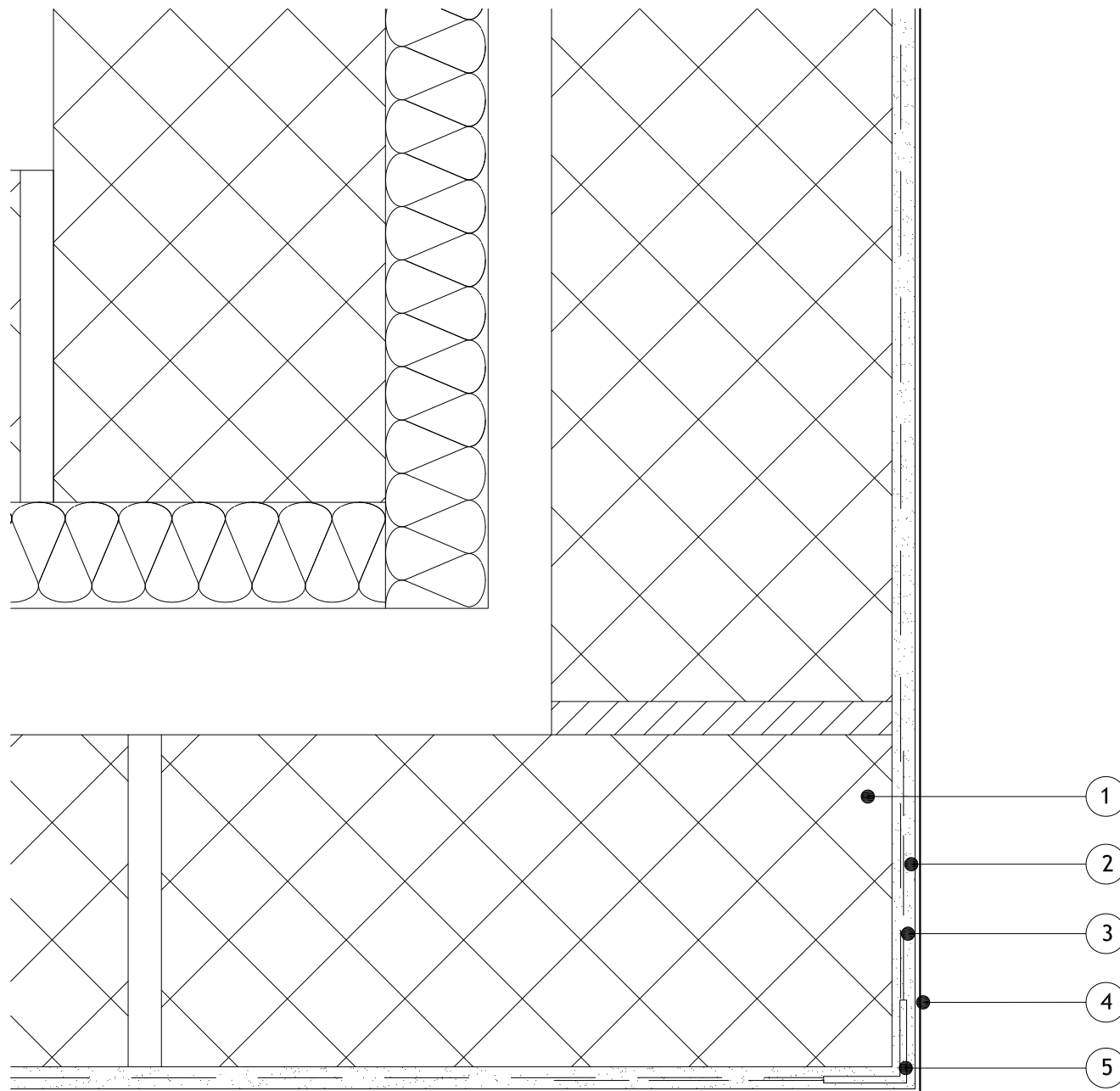
Note: This drawing is intended to illustrate the correct application of Alumasc products only. All other elements are shown indicatively and it is not the intention to detail building construction.

Items:-

- 1 - Existing substrate
- 2 - M.R. S5 Polymer Plain Render
- 3 - Alumasc Scrim Reinforcement bedded into top third of the M.R. S5 Polymer Plain Render
- 4 - ST Silkolitt Silicone Render/ST Mineral K Render/ST Silicone Facade Paint
- 5 - Corner Bead (as per specification)



INSULATED RENDERS



Notes.

1. Refer to Alumasc E.B.P. Ltd for Technical Assistance regarding specification for Alumasc Render applications.



ALUMASC EXTERIOR BUILDING PRODUCTS LTD
 White House Works, Bold Road, Sutton
 St Helens, Merseyside, WA9 4JG, UK
 Telephone: +44 (0)1744 648400
 Facsimile: +44 (0)1744 648401
 Website: www.alumascfacades.co.uk
 E-mail: technical@alumasc-exteriors.co.uk

Drawing title:

**Typical Silicone Render Detail
 Corner Detail**

Detail is valid only when approved by the Architect / Contractor concerned

Drawing No:
 ST-M-05-01

Scale:
 NTS

Revision:

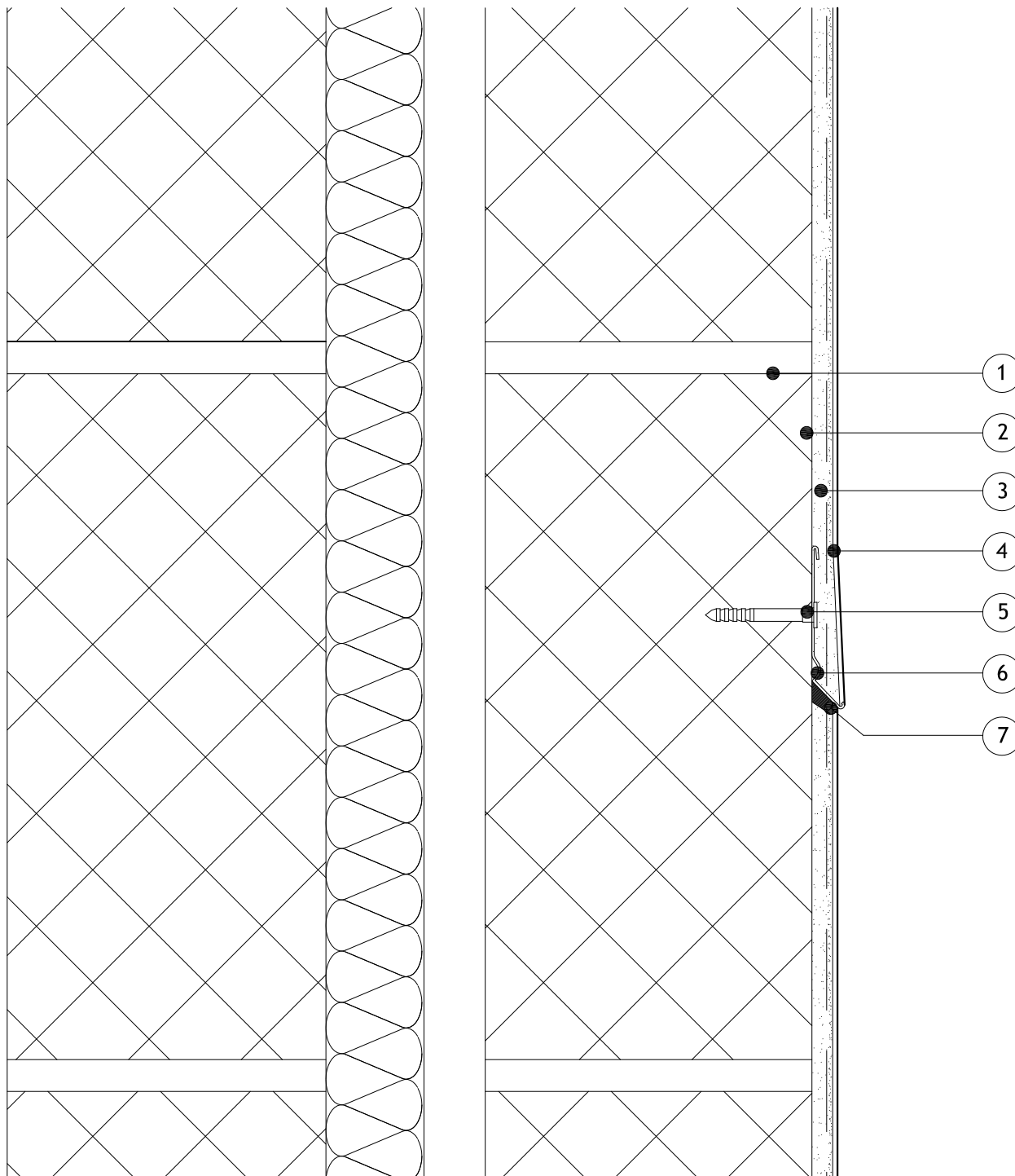
Date:
 01.08.2012

© Copyright reserved

Note: This drawing is intended to illustrate the correct application of Alumasc products only. All other elements are shown indicatively and it is not the intention to detail building construction.

Items:-

- 1 - Existing substrate
- 2 - M.R. S5 Polymer Plain Render
- 3 - Alumasc Scrim Reinforcement bedded into top third of the M.R. S5 Polymer Plain Render
- 4 - ST Silkolitt Silicone Render/ST Mineral K Render/ST Silicone Facade Paint
- 5 - Approved Mechanical Fixing
- 6 - Bellcast Bead (as per specification)
- 7 - Alumasc Low Modulus Silicone Sealant



Notes.

1. Refer to Alumasc E.B.P. Ltd for Technical Assistance regarding specification for Alumasc Render applications.



ALUMASC EXTERIOR BUILDING PRODUCTS LTD
 White House Works, Bold Road, Sutton
 St Helens, Merseyside, WA9 4JG, UK
 Telephone: +44 (0)1744 648400
 Facsimile: +44 (0)1744 648401
 Website: www.alumascfacades.co.uk
 E-mail: technical@alumasc-exteriors.co.uk

Drawing title:

**Typical Silicone Render Detail
 Mid Bellcast Detail**

Detail is valid only when approved by the Architect / Contractor concerned

Drawing No:
 ST-M-06-01

Scale:
 NTS

Revision:

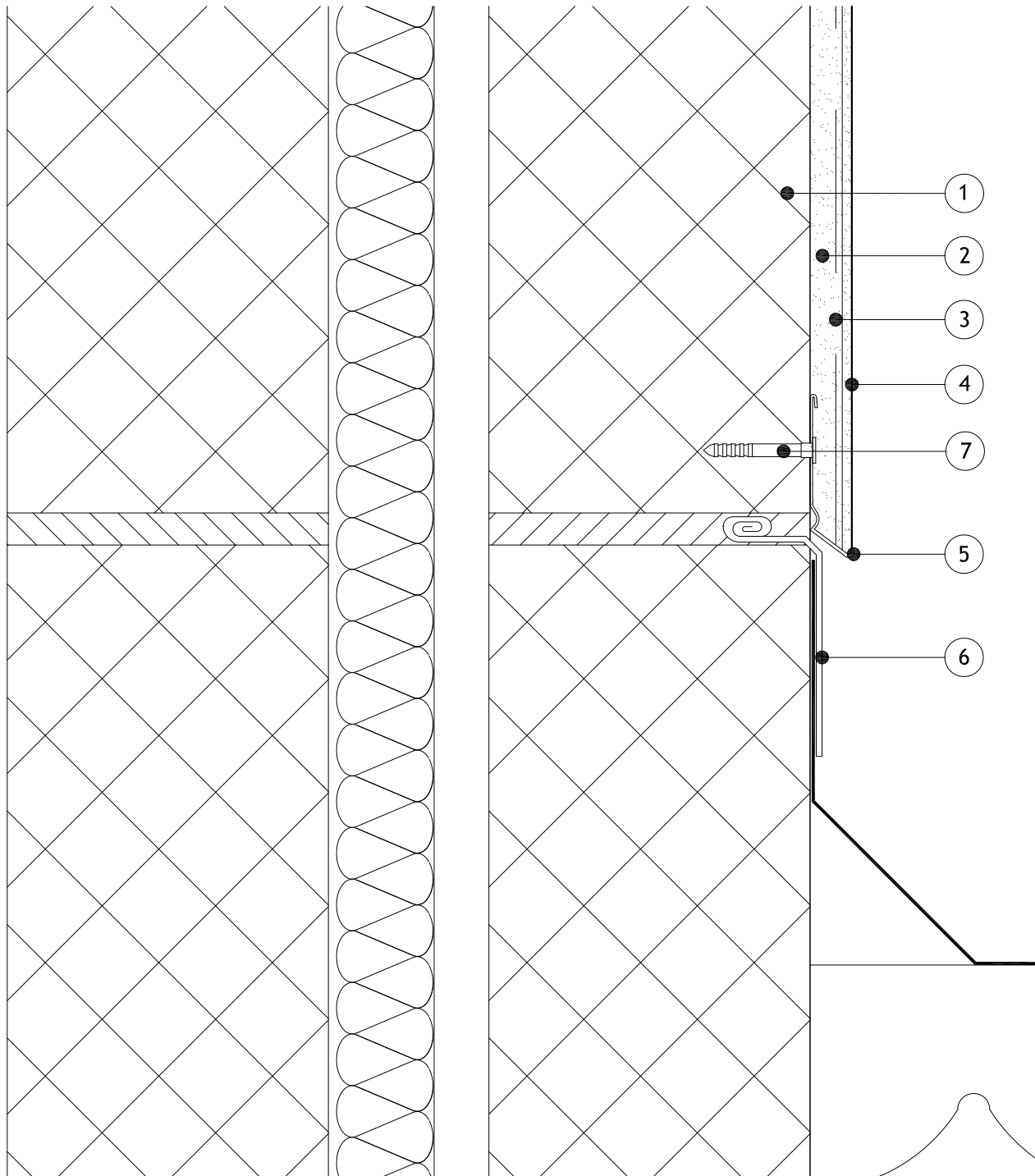
Date:
 01.08.2012

© Copyright reserved

Note: This drawing is intended to illustrate the correct application of Alumasc products only. All other elements are shown indicatively and it is not the intention to detail building construction.

Items:-

- 1 - Existing substrate
- 2 - M.R. S5 Polymer Plain Render
- 3 - Alumasc Scrim Reinforcement bedded into top third of the M.R. S5 Polymer Plain Render
- 4 - ST Silkolitt Silicone Render/ST Mineral K Render/ST Silicone Facade Paint
- 5 - Bellcast Bead (as per specification)
- 6 - Lead Flashing
- 7 - Approved Mechanical Fixing



Notes.

1. Refer to Alumasc E.B.P. Ltd for Technical Assistance regarding specification for Alumasc Render applications.



ALUMASC EXTERIOR BUILDING PRODUCTS LTD
 White House Works, Bold Road, Sutton
 St Helens, Merseyside, WA9 4JG, UK
 Telephone: +44 (0)1744 648400
 Facsimile: +44 (0)1744 648401
 Website: www.alumascfacades.co.uk
 E-mail: technical@alumasc-exteriors.co.uk

Drawing title:

**Typical Silicone Render Detail
 Roof Abutment Detail**

Detail is valid only when approved by the Architect / Contractor concerned

Drawing No:
 ST-M-06-02

Scale:
 NTS

Revision:

Date:
 01.08.2012

© Copyright reserved

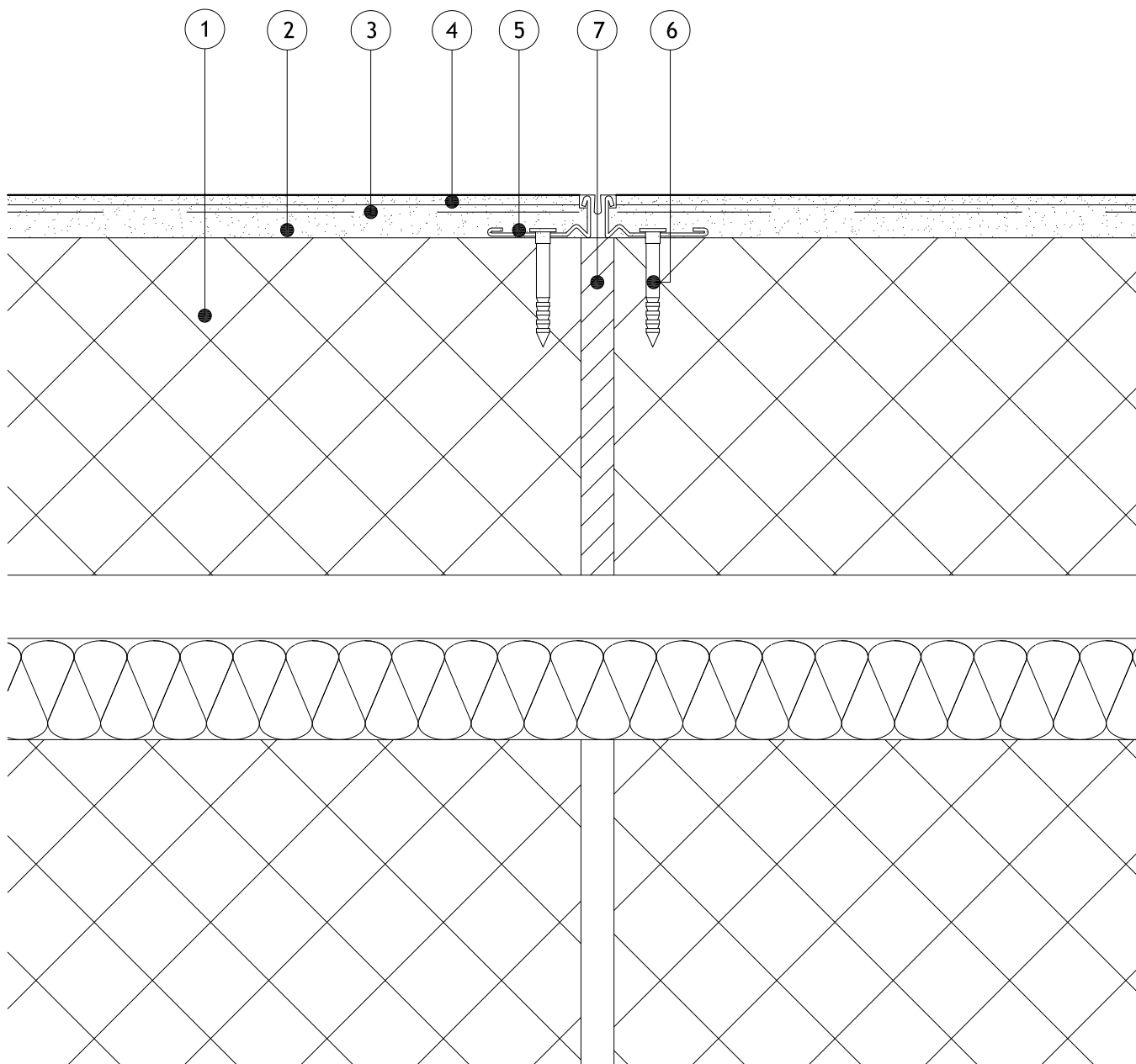
Note: This drawing is intended to illustrate the correct application of Alumasc products only. All other elements are shown indicatively and it is not the intention to detail building construction.

Items:-

- 1 - Existing substrate
- 2 - M.R. S5 Polymer Plain Render
- 3 - Alumasc Scrim Reinforcement bedded into top third of the M.R. S5 Polymer Plain Render
- 4 - ST Silkolitt Silicone Render/ST Mineral K Render/ST Silicone Facade Paint
- 5 - Movement Bead (as per specification)
- 6 - Approved Mechanical Fixing
- 7 - Structural Movement Joint



INSULATED RENDERS



Notes.

1. Refer to Alumasc E.B.P. Ltd for Technical Assistance regarding specification for Alumasc Render applications.



ALUMASC EXTERIOR BUILDING PRODUCTS LTD
 White House Works, Bold Road, Sutton
 St Helens, Merseyside, WA9 4JG, UK
 Telephone: +44 (0)1744 648400
 Facsimile: +44 (0)1744 648401
 Website: www.alumascfacades.co.uk
 E-mail: technical@alumasc-exteriors.co.uk

Drawing title:

**Typical Silicone Render Detail
 Vertical Movement Bead Detail**

Detail is valid only when approved by the Architect / Contractor concerned

Drawing No:
 ST-M-06-03

Scale:
 NTS

Revision:

Date:
 01.08.2012

© Copyright reserved

Note: This drawing is intended to illustrate the correct application of Alumasc products only. All other elements are shown indicatively and it is not the intention to detail building construction.