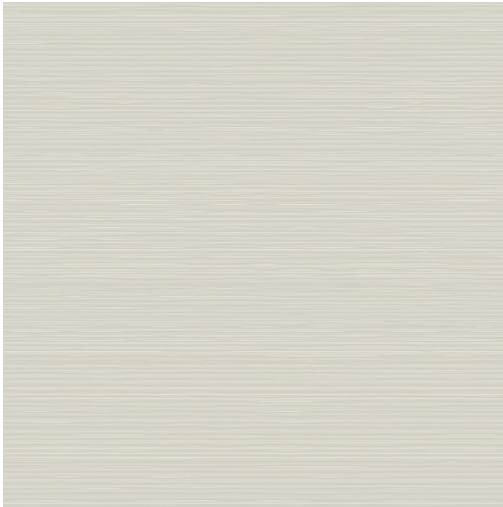


THREADS PRODUCT DATA SHEET



Available Sizes

300x200x8mm

Samples Service

Tel: +44 (0)1782 524 043

Fax: +44 (0)1782 577 379

Email: samples@johnson-tiles.com

Technical Helpline

Tel: +44 (0)1782 524 111

Fax: +44 (0)1782 577 379

Email: techadvice@johnson-tiles.com

www.johnson-tiles.com

Recycled Content **Up to 20%**

Range	Threads
Category	Colour
Collection	Intro Collection
Short Code	THRD I A
Colour	Cotton
Finish	Satin
Wall Suitability	Internal Only
Floor Suitability	-
Wet Barefoot	-
Material	Glazed Ceramic
Classification	BIII
Light Reflectance Value	62.00
CSV	VI

Physical Properties

Test / Standard	Requirement	Test Result
Length/Width EN ISO 10545-2	$\pm 0.5\% \leq \pm 2\text{mm}$	$\pm 0.25\%$
Thickness EN ISO 10545-2	$\pm 10\% \leq \pm 0.5\text{mm}$	$\pm 2.5\%$
Straightness of Sides EN ISO 10545-2	$\pm 0.3\% \leq \pm 1.5\text{mm}$	$\pm 0.15\%$
Rectangularity EN ISO 10545-2	$\pm 0.5\% \leq \pm 2\text{mm}$	$\pm 0.4\%$
Surface Flatness EN ISO 10545-2	$\pm 0.5\% \leq \pm 2\text{mm}$	$\pm 0.2\%$
Water Absorption EN ISO 10545-3	10% to 20%	15% to 17%
Modulus of Rupture EN ISO 10545-4	Ave 15N/mm ²	25N/mm²
Frost Resistance Not Applicable	N/A	Not suitable
Chemical Resistance EN ISO 10545-13	Min Class B	Class A-B (better)
Stain Resistance EN ISO 10545-14	Min Class 3	Class 3 (better)
Fire Rating		Class A1 Non Combustible
Weight/m² Thickness 8mm		13.75kg

Tile colours shown of the tile product on this data sheet are as accurate as the limitations of the printing process will allow. Due to the manufacturing process of all floor tiles there may be small variations in slip resistance. The slip resistance values provided are accurate at the time of testing and represent the standard production value. Please note, inadequate cleaning and maintenance will lead to a significant reduction in the slip resistance of any tiles. The pendulum test results are displayed in line with The Health & Safety Executive guidelines whereby 0 - 24 represents a high slip potential, 25 - 35 signifies a moderate slip potential and 36+ represents a low slip potential. All figures are accurate at the time of this data sheets creation (16/09/2024). Johnson Tiles Limited, Harewood Street, Tunstall, Stoke-on-Trent. ST6 5JZ. Registered in England No. 15600432. © 2024 Johnson Tiles. All rights reserved.