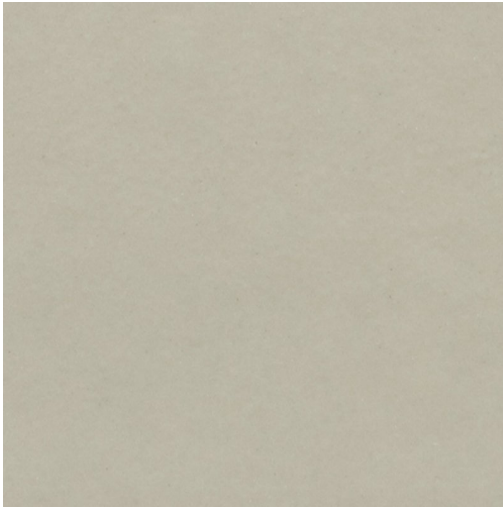


POOLS PRODUCT DATA SHEET



Available Sizes

250x62x8mm (Ref. 052)
250x125x8mm (Ref. 122)

Samples Service

Tel: +44 (0)1782 524 043
Fax: +44 (0)1782 577 379
Email: samples@johnson-tiles.com

Technical Helpline

Tel: +44 (0)1782 524 111
Fax: +44 (0)1782 577 379
Email: techadvice@johnson-tiles.com

www.johnson-tiles.com

Recycled Content **Up to 55%**

| | |
|-------------------------|--------------------------------|
| Range | Pools |
| Category | Colour |
| Collection | Absolute Collection |
| Short Code | AP072N |
| Colour | Cream |
| Finish | Smooth |
| Wall Suitability | Internal & External |
| Floor Suitability | - |
| Wet Barefoot | - |
| Material | Glazed Porcelain |
| Classification | Bla |
| Light Reflectance Value | 53.00 |
| CSV | VI |

Physical Properties

| Test / Standard | Requirement | Test Result |
|--|-----------------------------------|----------------------------------|
| Length/Width EN ISO 10545-2 | $\pm 0.6\% \leq \pm 2\text{mm}$ | Pass |
| Thickness EN ISO 10545-2 | $\pm 5\% \leq \pm 0.5\text{mm}$ | Pass |
| Straightness of Sides EN ISO 10545-2 | $\pm 0.5\% \leq \pm 1.5\text{mm}$ | Pass |
| Rectangularity EN ISO 10545-2 | $\pm 0.5\% \leq \pm 2\text{mm}$ | Pass |
| Surface Flatness EN ISO 10545-2 | $\pm 0.5\% \leq \pm 2\text{mm}$ | Pass |
| Water Absorption EN ISO 10545-3 | $\leq 0.5\%$ | <0.5% |
| Modulus of Rupture EN ISO 10545-4 | $\geq 35\text{N/mm}^2$ | >35N/mm² |
| Thermal Shock EN ISO 10545-9 | Pass | Pass |
| Frost Resistance EN ISO 10545-12 | Resistant | Resistant |
| Chemical Resistance EN ISO 10545-13 | Min Class B | Class A |
| Stain Resistance EN ISO 10545-14 | Min Class 3 | Pass |
| Fire Rating Not Applicable | N/A | Class A I Non Combustible |
| Weight/m² | | Varies by product |

Tile colours shown of the tile product on this data sheet are as accurate as the limitations of the printing process will allow. Due to the manufacturing process of all floor tiles there may be small variations in slip resistance. The slip resistance values provided are accurate at the time of testing and represent the standard production value. Please note, inadequate cleaning and maintenance will lead to a significant reduction in the slip resistance of any tiles. The pendulum test results are displayed in line with The Health & Safety Executive guidelines whereby 0 - 24 represents a high slip potential, 25 - 35 signifies a moderate slip potential and 36+ represents a low slip potential. All figures are accurate at the time of this data sheets creation (13/09/2024). Johnson Tiles Limited, Harewood Street, Tunstall, Stoke-on-Trent. ST6 5JZ. Registered in England No. 15600432. © 2024 Johnson Tiles. All rights reserved.