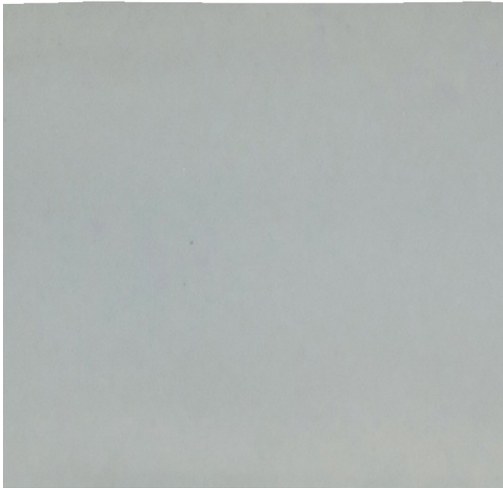


KENSINGTON PRODUCT DATA SHEET



Available Sizes

250x50x10mm

Samples Service

Tel: +44 (0)1782 524 043

Fax: +44 (0)1782 577 379

Email: samples@johnson-tiles.com

Technical Helpline

Tel: +44 (0)1782 524 111

Fax: +44 (0)1782 577 379

Email: techadvice@johnson-tiles.com

www.johnson-tiles.com

Recycled Content **Up to 80%**

Range	Kensington
Category	Colour, Structure
Collection	Select Collection
Short Code	KEN I 2A
Colour	Sage
Finish	Gloss - Rustic Structure
Wall Suitability	Internal Only
Floor Suitability	-
Wet Barefoot	-
Material	Glazed Ceramic
Classification	BIII
Light Reflectance Value	42.00
CSV	VI

Physical Properties

Test / Standard	Requirement	Test Result
Length/Width EN ISO 10545-2	$\pm 0.5\% \leq \pm 2\text{mm}$	Pass
Thickness EN ISO 10545-2	$\pm 10\% \leq \pm 0.5\text{mm}$	Pass
Straightness of Sides EN ISO 10545-2	$\pm 0.3\% \leq \pm 1.5\text{mm}$	Pass
Rectangularity EN ISO 10545-2	$\pm 0.5\% \leq \pm 2\text{mm}$	Pass
Surface Flatness EN ISO 10545-2	$+0.5\% \leq + 2\text{mm}$ $-0.3\% \leq - 1.5\text{mm}$	Pass
Water Absorption EN ISO 10545-3	10% to 20%	Pass
Modulus of Rupture EN ISO 10545-4	Ave 15N/mm ²	Pass
Frost Resistance Not Applicable	N/A	Not suitable
Chemical Resistance EN ISO 10545-13	Min Class B	Class A
Stain Resistance EN ISO 10545-14	Min Class 3	Class 5
Fire Rating		Class A1 Non Combustible
Weight/m² Thickness 10mm		17kg

Tile colours shown of the tile product on this data sheet are as accurate as the limitations of the printing process will allow. Due to the manufacturing process of all floor tiles there may be small variations in slip resistance. The slip resistance values provided are accurate at the time of testing and represent the standard production value. Please note, inadequate cleaning and maintenance will lead to a significant reduction in the slip resistance of any tiles. The pendulum test results are displayed in line with The Health & Safety Executive guidelines whereby 0 - 24 represents a high slip potential, 25 - 35 signifies a moderate slip potential and 36+ represents a low slip potential. All figures are accurate at the time of this data sheets creation (13/09/2024). Johnson Tiles Limited, Harewood Street, Tunstall, Stoke-on-Trent. ST6 5JZ. Registered in England No. 15600432. © 2024 Johnson Tiles. All rights reserved.