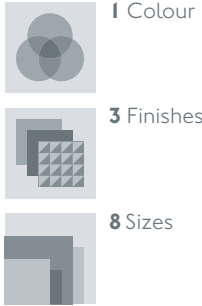


JOHNSON•TILES

Absolute Collection



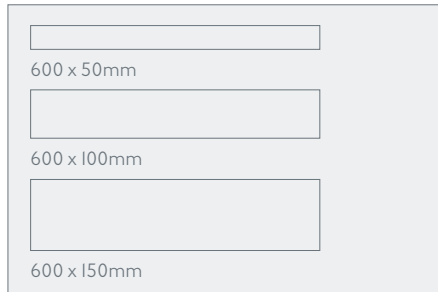
Aquila

U-glazed Porcelain
Wall and Floor Tiles

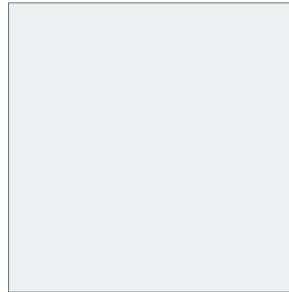


Aquila includes **eight sizes** perfectly designed for seamless installation.

Size



900 x 600mm



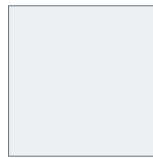
600 x 600mm



600 x 300mm



900 x 300mm



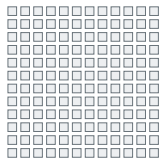
300 x 300mm

Thickness

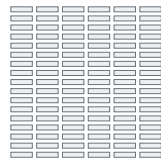
All tiles in this range are 11 mm thick.

Mosaic

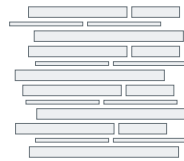
Sheet size 300 x 300mm



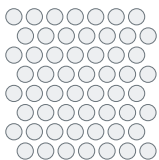
25 x 25mm



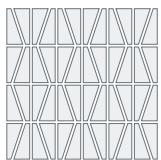
50 x 15mm



Mixed large



Round
ø40mm

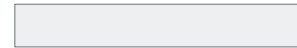


Trapezium
75 x 50mm

Skirting



300 x 90mm – Round top



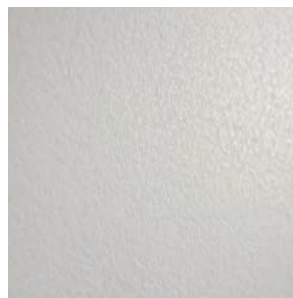
600 x 90mm – Round top

Three finishes combine form and function.

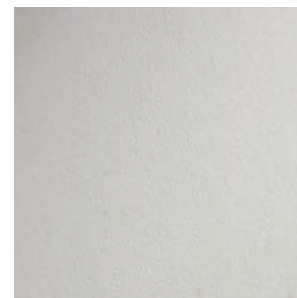
Examples below are not to scale but have been enlarged to show detail:



Bush Hammered



Lapato



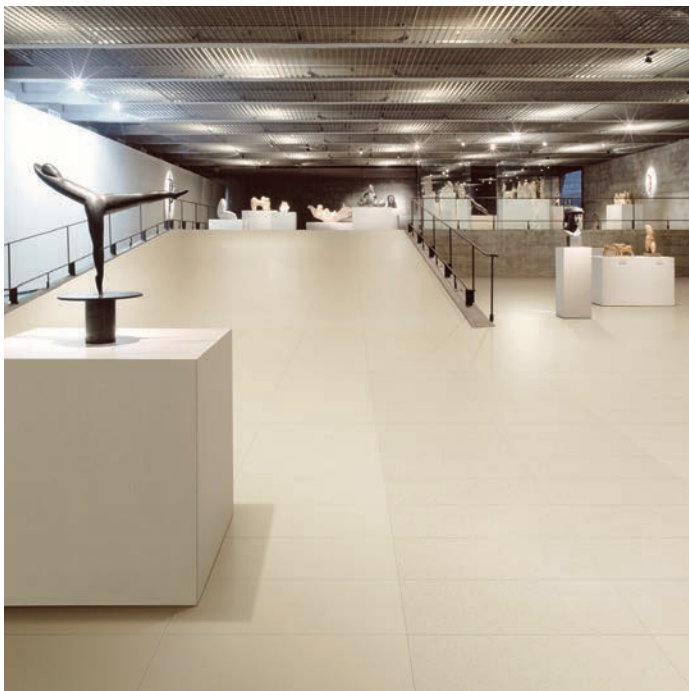
Natural



White

White

Size	Finish		
	Bush Hammered	Lapato	Natural
300 x 300mm	AQL01B	AQL01L	AQL01N
600 x 50mm	AQL01B	AQL01L	AQL01N
600 x 100mm	AQL01B	AQL01L	AQL01N
600 x 150mm	AQL01B	AQL01L	AQL01N
600 x 300mm	AQL01B	AQL01L	AQL01N
600 x 600mm	AQL01B	AQL01L	AQL01N
900 x 300mm	–	AQL01L	AQL01N
900 x 600mm	–	AQL01L	AQL01N
Mosaic			
25 x 25mm	AQL1BM	AQL1LM	AQL1NM
50 x 15mm	AQL1BM	AQL1LM	AQL1NM
Mixed large	AQL1BM	AQL1LM	AQL1NM
Round ø40mm	AQL1BM	AQL1LM	AQL1NM
Trapezium 75 x 50mm	AQL1BM	AQL1LM	AQL1NM
Skirting			
300 x 90mm – Round top	–	AQL1LS	AQL1NS
600 x 90mm – Round top	–	AQL1LS	AQL1NS



Aquila White

Aquila, a stunningly simple product, available in a compact neutral palette.

For more details on suitability or advice on any technical issues, please contact our technical helpline below.

Specification

Wall	Floor	Wet barefoot	Material	Finish
Internal and external	Internal	–	Un-glazed porcelain	Various

Floor values – Bush Hammered

Pendulum 4S	Rz	R value	Shade variation	Wet ramp	Traffic
Dry 36+ Wet 25-35	34.6	R II	VI	C	Commercial

Floor values – Lapato

Pendulum 4S	Rz	R value	Shade variation	Wet ramp	Traffic
Dry 36+ Wet 25-35	15.1	–	VI	–	Commercial

Floor values – Natural

Pendulum 4S	Rz	R value	Shade variation	Wet ramp	Traffic
Dry 36+ Wet 36+	15.3	R10	VI	–	Commercial

Due to the manufacturing process of all floor tiles there may be small variations in slip resistance. Given this we suggest you refer to our website or call our technical helpline for the most up to date information.

Light reflectance properties

Code	Colour	NCS	Reflectance Y
AQL01	White	0502-Y	85.71

Note: These results are from Johnson Tiles internal test reports and are to be used for guidance only.

Front cover image: **Aquila White**

Samples

Tel: +44 (0) 1782 524043
Fax: +44 (0) 1782 524088
Email: samples@johnson-tiles.com



Technical helpline

Tel: +44 (0) 1782 524111
Fax: +44 (0) 1782 577379
Email: techadvice@johnson-tiles.com

www.johnson-tiles.com