



SUPA-LOCK TILE

Description: Loose lay interlocking floor tile

Construction	PVC compound
Tile Size	5mm: 500x500mm Butterfly Joint (12 tiles per pack) 6mm: 500x500mm Hidden Joint (10 tiles per pack) 7mm: 500x500mm T-Joint (10 tiles per pack)
VOC Content	Trace elements of volatiles from modifiers and non PVC based additives. Significantly lower VOC levels when compared to resin based flooring systems or the levels encountered when using adhesives to stick down conventional floor coverings. Supa-lock contains no formaldehyde and carries a class E1 rating.
Sustainability	Supa-lock is 100% recyclable, at the end of its service life the tiles can be granulated and re-used to manufacture a new floor.
Weight	5mm: 8.2kg/m ² 6mm: 8.2kg/m ² 7mm: 9.1kg/m ²
Hardness	89 - 92 shore A
Thickness	BS EN 428 – 6.03 to 9.24mm +/- 0.15mm
Abrasion Wear	BS EN 660-2 / En 13845 Wear Group T (<0.1mm /100 revs)
Mechanical Resistance	17 N/mm ² to DIN 53516

Test Results:

Fire Class	Class 1 BS 476: Part 7 / DIN 13501: 2004 – Bfl-S1
Electrical Properties	Standard tile: surface resistivity: 10 ¹¹ and 10 ¹¹ and 10 ¹⁴ Ω. ESD Tile surface resistivity 3 x 10 ⁶ Ω and 2.2 x 10 ⁴ Ω / Resistance to ground : 5.7 x 10 ⁵ Ω and 2.9 x 10 ⁴ Ω Anti-static tile: surface resistivity: 3 x 10 ⁹ Ω and 2.2 x 10 ¹¹ Ω
Mechanical Resistance	ESD tile fulfils the recommendations detailed in BS EN 61340 5-1:2001 for floors to be used for primary grounding.
Anti Slip	R10
Chemical Resistance	Good - EN 13529 – Common acids oils & gas oil – No deterioration / Solvents – Not resistant to prolonged contact.
Determination of Residual Indentation	BS EN 433:1994 – 0.1mm /Dimensional Stability – BS EN 434:1994 – Maximum change in dimension <0.1% / Compressive Strength – ISO 6721-1:1994, ISO 6721-2:1994, ISO 6721-6:1996: 520kg/cm ²
Colour Fastness /Resistance to natural light	EN 20105-B021 – 5 (no damage)
Sound Absorption	Noise reduction of up to 46db can be achieved

Guarantees:

- 20 year heavy commercial wear
- Full details of conditions and limits available on request



2009/533

JOSEPH HAMILTON & SEATON
RELAY PARK, RELAY DRIVE, TAMWORTH STAFFORDSHIRE, B77 5PR

TELEPHONE: (01827) 831400 TELEFAX: (01827) 831401
EMAIL: sales@jhscarpets.com

Registered Office: Gorsey Lane Coleshill Birmingham B46 1JU England HFD Ltd Registered in England and Wales No. 2674152

J O S E P H
H A M I L T O N
& S E A T O N



supa-lock Installation Instructions & Method Statement

Recommended method of installation: *These notes have been prepared as guide only, the information is supplied in good faith but without guarantee as site conditions vary and are beyond our control.*

POINTS TO CONSIDER BEFORE YOU START INSTALLATION:

- **LOOSE LAY OR GLUE?** **supa-lock** can be installed over any hard surface and in **most** situations will not require gluing. We recommend gluing the tiles in the following situations:
 - **DIRECT SUNLIGHT** (Shop fronts, south facing loading bay, sky lights etc.) It is advisable to glue the tiles in areas subject to direct sunlight such as glass fronted entrance foyers, shop fronts, south facing loading bay doors etc. It is possible that the tiles in direct sunlight will get very hot and expand at a faster and higher rate than the remainder of the floor.
 - **HEAVY TRUCKS AND/OR TIGHT TURNING CIRCLES** - Certain fork lift and pallet truck designs can cause a problem, heavy trucks with small wheels, especially electric trucks where the battery is located over the main drive wheel. If you use this type of vehicle we strongly advise you to test the tiles with the trucks before making a decision on which thickness to use (7 or 10mm supa-lock and/or consider gluing the tiles.
 - **EXTERNAL HEAT SOURCES / CATALYTIC CONVERTERS:** Ovens, furnaces and catalytic converters can make the floor extremely hot and may cause the tiles to expand. To avoid this problem glue the tiles in the area in front of the oven or where the catalytic converter will sit when the car is parked.
- **STAINING / DISCOLOURING**
 - **STAINING FROM RUBBER TYRES:** It is possible that certain rubber tyres and wheels may stain the tile (and many other types of flooring). This is a result of a chemical reaction that occurs between the anti-oxidant that is used in some rubbers and the plasticizer used in vinyl. The stain/reaction is brown in colour so is less visible in certain colours of tile (dark grey, terracotta and black). **supa-lock** recommends that if your application is susceptible to staining from tyres, hair dyes and other harsh chemicals, you consider the application of our anti-colour /anti-stain 2 part solvent free waterborne polyurethane sealer. Please contact us for further information.
 - **UV STABILITY** – **supa-lock** is not recommended for external use and the colours are not UV stable.
- **BATCH CONTROL:** We are unable to guarantee 100% colour consistency between individual production batches. Each individual order will be supplied from a single batch but in the event that you need additional tiles or wish to extend the area we cannot guarantee subsequent orders will be supplied from the same batch.
- **SURFACE FINISH / PATINA / WITNESS MARKS** – **supa-lock** is designed to provide exceptional durability + simple installation. This is achieved by the unique interlocking design and method of production. The method of manufacture may result in a witness mark being visible in the tile at the central injection moulding point and along the flow lines from the centre and around the external edge of the tile, the mark cannot be avoided. Please check the tiles, if the marking is unacceptable do not continue with installation as we will not accept responsibility to replace or refund the cost of any goods after 10m² or more have been installed if the markings are subsequently deemed unacceptable.



2009/533

JOSEPH HAMILTON & SEATON
RELAY PARK, RELAY DRIVE, TAMWORTH STAFFORDSHIRE, B77 5PR

TELEPHONE: (01827) 831400 TELEFAX: (01827) 831401
EMAIL: sales@jhscarpets.com

Registered Office: Gorsey Lane Coleshill Birmingham B46 1JU England HFD Ltd Registered in England and Wales No. 2674152



TOOLS & EQUIPMENT: All you need is a non-marking rubber mallet or engineering hammer, chalk line or other method of keeping the tiles square and a way to cut the tiles. **supa-lock** can be cut using several methods, a lot will depend on personal preference, experience and the tools you have on hand but we recommend the following:

- Magnum shear / guillotine – Available to hire from supa-lock
- Stanley / utility knife with a concave blade – Always use a straight edge and wear cut proof gloves.
- Electric jig saw with a medium or rough wood blade
- Table saw or Band saw with a medium or rough wood blade

<p>Guillotine (Available to rent)</p>	<p>Electric Jigsaw</p>	<p>Stanley knife with concave blade</p>

THE KEY FACTORS FOR A SIMPLE AND SUCCESSFUL INSTALLATION.

- ✓ *Let the tiles acclimatise, the minimum recommended installation temperature is 15°C.*
- ✓ *Split the pallet and spread the tiles across the floor prior to starting installation.*
- ✓ *Start from the centre and create your square using a chalk line or laser line*
- ✓ *Don't force the tiles, offer up the corner of the tile and gently hammer the joints together.*
- ✓ *Allow the floor to settle before measuring and cutting up against walls and fixed points.*
- ✓ *Leave a minimum of a 5mm gap between the tiles and any fixed point*
- ✓ *Create a template for difficult / complicated cuts*

Stage 1 - TEMPERATURE - ALLOW THE TILES TO ACCLIMATISE Installation should not take place at temperatures below 15°C. Do not try and install the tiles straight after delivery, the tiles must be allowed to acclimatise to the ambient room temperature prior to starting installation, we recommend you allow 24 hours but this will be dependent on temperature, the warmer it is the quicker the tiles will acclimatise, if time is short we recommend you breakdown the pallet of tiles into small packs to help them acclimatise and settle (see pic 1.) If installation has to take place at a temperature below 15°C leave a larger expansion gap between the tiles and any fixed point and / or incorporate an expansion gap in the floor every 8 to 10 meters.



Pic 1. Break down the pallets and allow tiles to acclimatise



2009/533

JOSEPH HAMILTON & SEATON
RELAY PARK, RELAY DRIVE, TAMWORTH STAFFORDSHIRE, B77 5PR

TELEPHONE: (01827) 831400 TELEFAX: (01827) 831401
EMAIL: sales@jhscarpets.com

Registered Office: Gorsey Lane Coleshill Birmingham B46 1JU England HFD Ltd Registered in England and Wales No. 2674152



Stage 2 - PREPARATION: Sweep or vacuum the floor to remove any loose impediments. Remove any high points in the floor. Fill any holes with a rapid setting floor repair compound such as Ardurapid A46 or similar. For uneven surfaces that require smoothing use a smoothing compound such as Ardex Feather Finish.

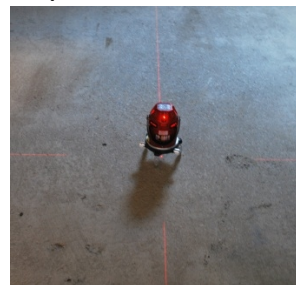
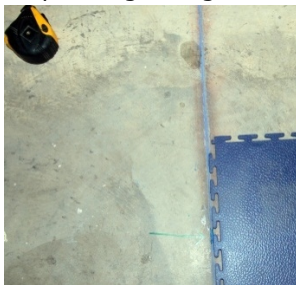


Pic 2. Sweep the floor, remove any highpoints and patch repair or level any cracks or low points.

Stage 3 – SETTING OUT:

Setting out / the starting point is different for the open joint and hidden joint design; please refer to the specific installation instructions for each type of tile design below.

VERY IMPORTANT: It is essential for both designs that the tiles are kept square to each other at all times. We strongly recommend that you use a chalk line; laser line or carpenters square to set out the site and to ensure that the tiles are kept at right angles to each other. (see pic. 3)



Pic 3. Make sure you keep the tiles square using either a carpenters square, chalk line or laser

Stage 4 – INSTALLATION METHOD: Once you have identified your starting point and created your straight lines it's time to start fitting the tiles. Our first recommendation is to lay the tiles out on the floor (see Pic 4); this will allow them to settle. Next connect the tiles together by offering up the tile and lining up the corner of the tile and ensure the joint are in line. Starting from the corner (see Pic 5) use your rubber mallet to gently tap the joints together. **HINT:** supra-lock installations are as simple as putting together a jigsaw puzzle, if the joints don't fit together without you having to force them, chances are you are doing something wrong. The first sign of trouble will always be if the tiles do not connect together with a simple tap of the hammer, this will indicate that the tiles are not lined up correctly.



Pic 4. Split the pallet and spread the tiles across the floor prior to starting installation.



2009/533

JOSEPH HAMILTON & SEATON
RELAY PARK, RELAY DRIVE, TAMWORTH STAFFORDSHIRE, B77 5PR

TELEPHONE: (01827) 831400 TELEFAX: (01827) 831401
EMAIL: sales@jhscarpets.com

Registered Office: Gorsey Lane Coleshill Birmingham B46 1JU England HFD Ltd Registered in England and Wales No. 2674152



Pic 5. Don't force the tiles, offer up the corner of the tile and gently hammer the joints together.

ESD INSTALLATIONS ONLY: **supa-lock ESD** contains stainless steel fibres that may be visible on the surface of the tile. This is unavoidable and a fundamental part of the manufacturing process that ensures optimum ESD performance. Please check the tiles, if the marking is unacceptable do not continue with installation as we will not accept responsibility to replace or refund the cost of any goods after 10m² or more have been installed.

To achieve a fully ESD flooring the tiles need to be grounded. This is achieved by laying a grid of black conductive tape under the tiles at approx. 2m centres in one direction and 5m centres in the opposite direction (see Pic 8). One grounding point is needed for every 80 to 100m² of supa-lock ESD and / or one grounding point for each separate section / room of supa-lock ESD installed. Place the grounding point in the corners of the room or along the wall to avoid creating a trip hazard.

WHERE TO START: The starting point for the open joint, the E500/7 & E500/10 tiles, should always be as close to the centre of the room as possible. The hidden joint tile, E500/6, should start from one corner of the room.



INSTRUCTIONS FOR **supa-lock E500/7 & E500/10 OPEN JOINT TILES ONLY**



Start from as close to the centre of the room as possible.



Snap a chalk line or use a laser to create lines A-A and B-B. Make sure these lines are at right angles. (Pic. 6).



Using the rubber mallet, tap tiles together, starting at the corner of the tile & working your way outwards towards the edge of the tile.



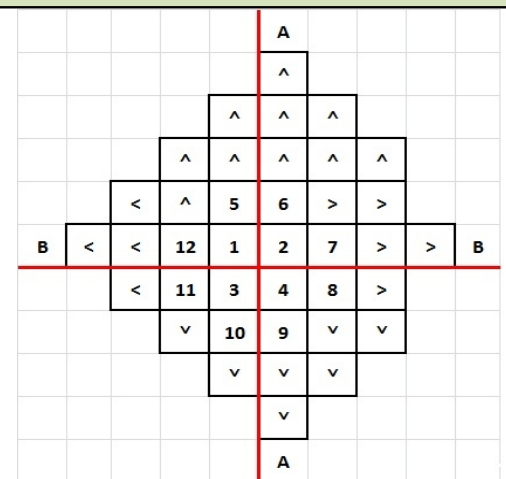
Work out in a circular pattern filling in the corners



Once all full tiles have been installed allow the floor to settle before measuring and fitting the finishing cuts.



Ensure that you allow at least a 5mm expansion gap between the tiles and any fixed point



Pic. 6



2009/533

JOSEPH HAMILTON & SEATON
RELAY PARK, RELAY DRIVE, TAMWORTH STAFFORDSHIRE, B77 5PR

TELEPHONE: (01827) 831400 TELEFAX: (01827) 831401
EMAIL: sales@jhscarpets.com

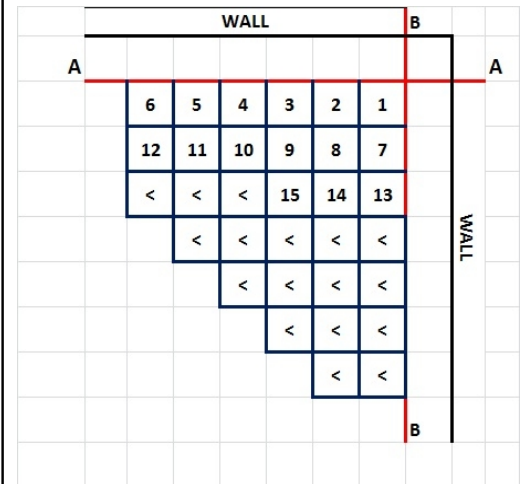
Registered Office: Gorsey Lane Coleshill Birmingham B46 1JU England HFD Ltd Registered in England and Wales No. 2674152



INSTRUCTIONS FOR **supa-lock** E500/6 HIDDEN JOINT TILES ONLY

- Carefully measure 20cms out at each end of wall and snap a chalk line or use a laser to create lines A-A and B-B. Make sure these lines are at 90 degrees to each other. (Pic. 7).
- Lay tiles with the hidden/female joint to the walls (identified here by the red lines and the exposed joint/male joint on the left / bottom of the tile. Very important - lay the first few rows perfectly straight, any mistake now will impact on the entire installation.
- Lay the tiles from right to left always placing the hidden/female edge on top of the exposed/male edge. Line up the tabs at the corner to help align tiles. Install one row at a time, completing each row before beginning the next.
- Cut in perimeter tiles allowing at least a 5mm expansion gap between the tiles and any fixed point

VERY IMPORTANT: We strongly recommend you use a chalk line; laser line or carpenters square to ensure that the tiles are kept at right angles to each other throughout the installation.



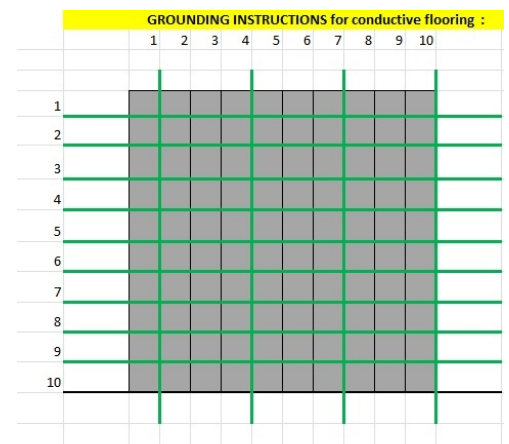
Pic 7.



INSTRUCTIONS FOR **supa-lock** E500/7/ESD & E501/7/ESD ONLY

- Follow stage 1 & 2 as detailed in section A
- Lay the grounding tape (shown as the GREEN LINES line in Pic 8). The tape should be laid to run under the centre of every tile in one direction (horizontal lines in the pictures and at right angles every third tile as demonstrated by the vertical green lines
- Using the rubber mallet, tap tiles together, starting at the corner of the tile & working your way outwards towards the edge of the tile.
- Work out in a circular pattern filling in the corners
- Once all full tiles have been installed allow the floor to before measuring and fitting the finishing cuts.
- Ensure that you allow at least a 5mm expansion gap between the tiles and any fixed point
- Fit your ground points (minimum of one every 50m², for high risks areas consider installing a second / backup grounding point) in the corners or along the extremities of the esd floor. Ensure that the grounding tape is connected to the studded grounding and connect you floor to your grounding point.

Important: If the existing floor / substrate has already been grounded (i.e. you are laying over an existing conductive floor) it may be necessary to lay an insulative barrier under the tiles. If in doubt please contact our technical team for further advice.



Pic. 8



2009/533

JOSEPH HAMILTON & SEATON
RELAY PARK, RELAY DRIVE, TAMWORTH STAFFORDSHIRE, B77 5PR

TELEPHONE: (01827) 831400 TELEFAX: (01827) 831401
EMAIL: sales@jhscarpets.com

Registered Office: Gorsey Lane Coleshill Birmingham B46 1JU England HFD Ltd Registered in England and Wales No. 2674152



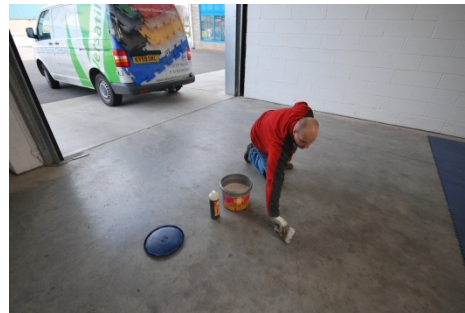
CUTTING, FINISHING & MAINTAINING YOUR SUPA-LOCK FLOOR:

For the perfect finish:

- ✓ *Leave a minimum of a 5mm gap between the tiles and any fixed point (walls and machinery)*
- ✓ *Cover the 5 mm expansion gap between the tiles and the walls with skirting profiles.*
- ✓ *Undercut wood doorjambes and slip the tiles underneath.*
- ✓ *With metal doorjambes – cut the flooring material to within 5mm & then caulk around the jamb.*
- ✓ *Use supa-lock ramp and corner sections (E500/7 & 10) or dim strips for E500/6.*
- ✓ *The tiles may require gluing if they will be in direct sunlight.*
- ✓ *To keep your floor looking good give it a sweep on a regular basis and use a rotary scrubber dryer for routine maintenance.*



Leave a minimum of a 5mm gap between the tiles and any fixed point (walls and machinery)



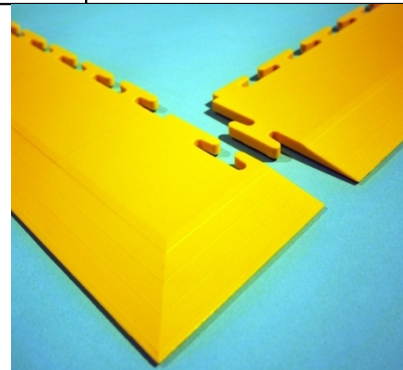
The tiles may require gluing if they will be in direct sunlight.



To keep your floor looking good give it a sweep on a regular basis and use a rotary scrubber dryer for routine maintenance.



Skirting Profile



Ramp & Corner Section

Cleaning Guidelines

- Regular & light cleaning is better than infrequent and heavy cleaning.
- Use an entrance mat to remove as much dirt and moisture as possible.
- Use a **neutral PH floor** cleaning detergent and don't use an excessive concentration of cleaning detergent.
- Use the correct cleaning equipment, either a two component bucket and mop system or rotary scrubber dryer, it may cost a bit more up front but will save you a fortune in time and effort in the long run.
- Don't use excessive amounts of water, this will make your job harder, not easier, **damp mopping** is the best solution.



2009/533

JOSEPH HAMILTON & SEATON
RELAY PARK, RELAY DRIVE, TAMWORTH STAFFORDSHIRE, B77 5PR

TELEPHONE: (01827) 831400 TELEFAX: (01827) 831401
EMAIL: sales@jhscarpets.com

Registered Office: Gorsey Lane Coleshill Birmingham B46 1JU England HFD Ltd Registered in England and Wales No. 2674152

J O S E P H
H A M I L T O N
& S E A T O N



Care & Maintenance

- Fit protective feet to table and chair legs and avoid dragging items with sharp or angular corners over the floor to prevent scratching.
- **supa-lock** has an impervious surface that can be kept clean using traditional cleaning methods. However an application of a metalised polish can offer extra protection if required. The level and intensity of traffic and soiling will determine the level of cleaning required and if and when a polish will have to be applied.
- Standard commercial polishes **must not be applied to the ESD and anti-static** supa-lock range as they will inhibit the conductive properties of the flooring. Please refer to our **approved maintenance products** for information on the approved range of maintenance products.



2009/533

JOSEPH HAMILTON & SEATON
RELAY PARK, RELAY DRIVE, TAMWORTH STAFFORDSHIRE, B77 5PR

TELEPHONE: (01827) 831400 TELEFAX: (01827) 831401
EMAIL: sales@jhscarpets.com

Registered Office: Gorsey Lane Coleshill Birmingham B46 1JU England HFD Ltd Registered in England and Wales No. 2674152