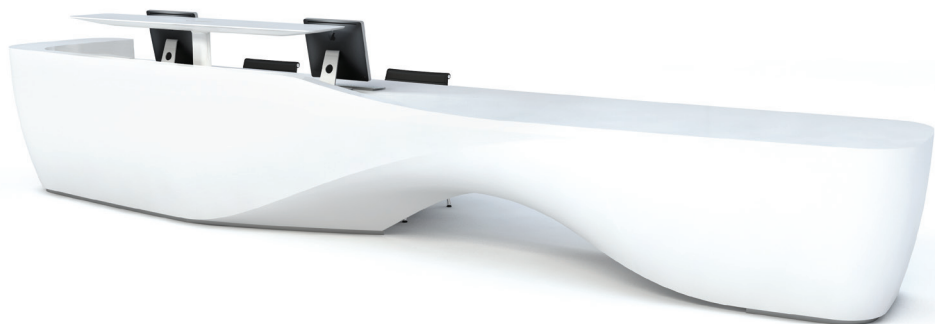


**isomi**



---

# Kin II

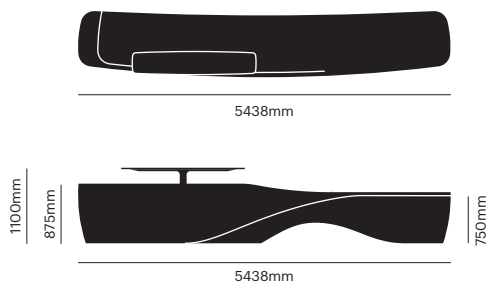
design by Paul Crofts

---

## Features

- Can be personalised using backlit translucent logo or branding
- Backlit translucent patterns
- Lighting integrated into sign in platform
- Unique, distinctive 3D contours
- Made using solid surface — highly durable and impact resistant
- Easy to clean
- Pen pots, cable ports and storage space
- Seamless repairs, without visible trace
- Efficient lead times
- Range of colour options

All Isomi products and designs are protected by law, particularly by copyright, patent and trademark laws and may not be used without written permission.



## isomi

**Studio 2**

**24 Ainger Road, London NW3 3AS**

Telephone **+44 (0)20 7388 8599**

Email **info@isomi.com**

**www.isomi.com**