

monodeck™

Mat 15 System



IMPACT & AIRBORNE NOISE REDUCTION SYSTEM

- Refurbishments
- Conversions
- Listed buildings requiring minimal structural change



Taking the *mystery* out of Acoustics

DESCRIPTION

- ❑ The monodeck Mat 15 system is designed to reduce airborne & impact sound transmission through timber floors.
- ❑ Monodeck Mat 15 is a 15mm thick tri-layer system with a reconstituted 8mm ACF foam core which will provide impact and airborne improvement.
- ❑ Monodeck Mat 15 is ideal for floor upgrades when looking to improve sound reduction on stairs and under engineered timber floors.

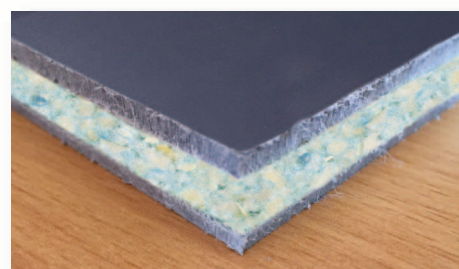
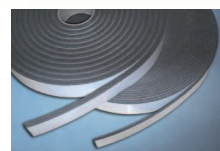
APPLICATIONS

- ❑ To be used over floorboards for conversions, refurbishments or listed buildings requiring minimal structural change.



ACCESSORIES

- ❑ Isolation Strip
- ❑ 9mm MR-grade board



Product data

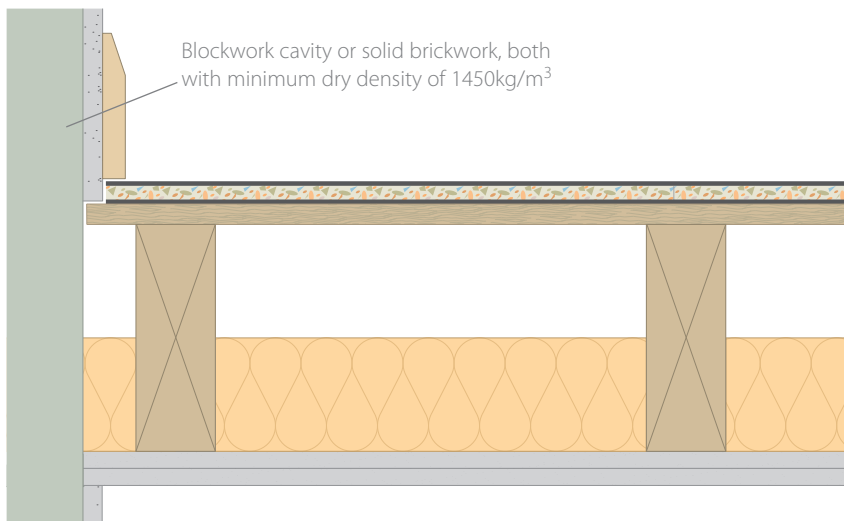
| | |
|------------------|---|
| Overall size: | 1200mm x 1000mm mat |
| Resilient layer: | 15mm tri-layer with reconstituted 8mm ACF foam core |
| Weight: | Approx. 13kg/m ² |

Performance

Monodeck Mat 15 will typically provide the following performance under site conditions :

| | |
|------------------------------|--------------------|
| Airborne $D_{nT,W} + C_{tr}$ | Impact $L'_{nT,W}$ |
| min. 43dB | max. 60dB |

* based upon the construction detailed below.



- ❑ Monodeck Mat 15.
- ❑ floorboards, min. 18mm thick.
- ❑ min. 200 x 50mm timber joists @ 400 mm centres.
- ❑ 100mm 45Kg/m³ insulation between joists.
- ❑ lath and plaster ceiling or 25mm o/a double boarded ceiling (min. 20kg/m²) fixed to timber joists.
NB: additional performance will be achieved by isolation of the ceiling; please contact Isomass for further advice.

OTHER PRODUCTS IN THE MONODECK RANGE

- ❑ **Monodeck 17T, 26T & 30T:** overlay platform systems direct to floorboards to reduce transmission through timber floors in situations where finished floor height is not critical.
- ❑ **Monodeck 32T & 37T:** overlay platform systems direct to joists to reduce transmission and thermally enhance traditional joisted timber floors.
- ❑ **Monodeck 26C:** overlay platform system to reduce sound transmission and impact sound transmission through concrete floors.

Every effort has been taken in the preparation of this sheet to ensure the accuracy of representations contained herein. Recommendations as to the use of materials, construction details and methods of installation are given in good faith and relate to typical situations. However, every site has different characteristics and reliance should not be placed upon the foregoing recommendations. Advice can be given as to specific applications of the products, upon request to isomass building products.

SPECIFICATION

The acoustic floor shall be:

- ❑ Monodeck Mat 15, supplied by Isomass Ltd. Units 10 & 11, Avenue Business Park, Off Brockley Road, Elsworth, Cambridgeshire, CB23 4EY and installed in accordance with manufacturer's instructions / recommendations.

INSTALLATION

- ❑ Lay monodeck Mat 15 over the entire level floor with all joints tightly abutted.
- ❑ Most t&g or interlocking engineered timber panel floor finishes can be laid directly onto isoscheck Mat 15. Isomass can also supply a 9mm thick tongued & grooved MR-grade board to overlay Mat 15, if required. If in doubt please contact us with the floor specification.
- ❑ Finished timber floors should be isolated from the skirting using Isocheck Isolation Strip.
- ❑ Full installation instructions are available and must be used in conjunction when laying this system.

For advice on treatment of services and penetrations, consult our brochure or visit our website.