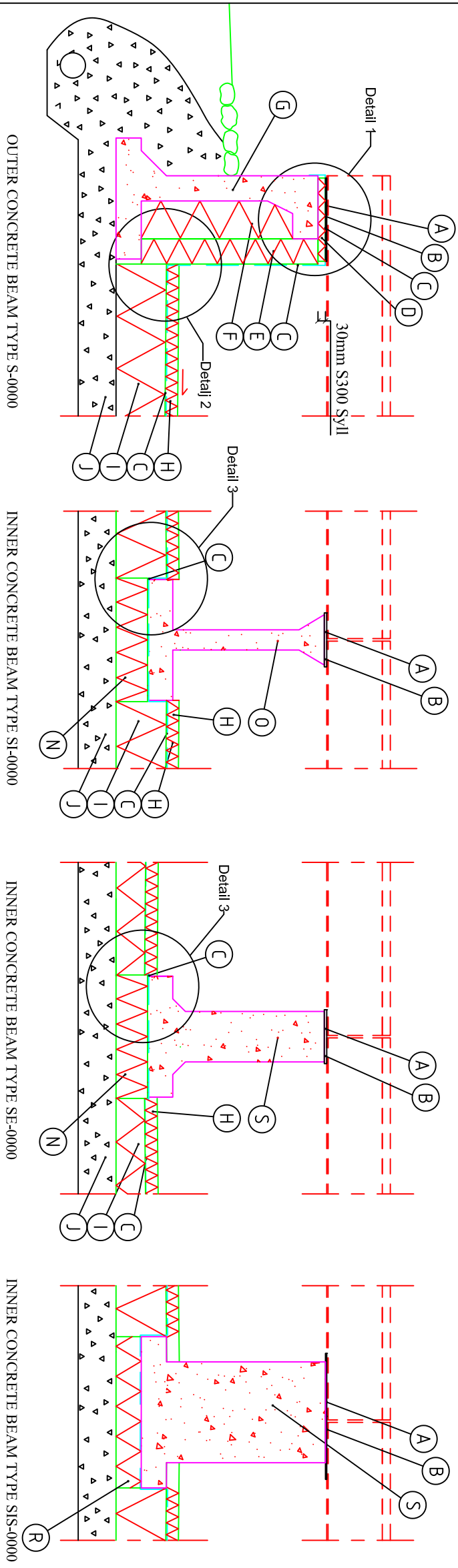


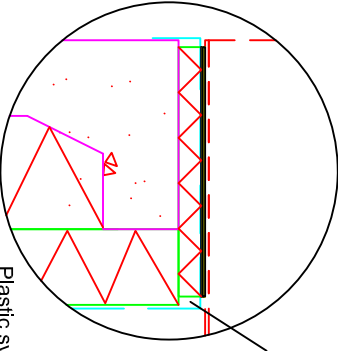
# FOUNDATION SYSTEM ISOLERGRUND



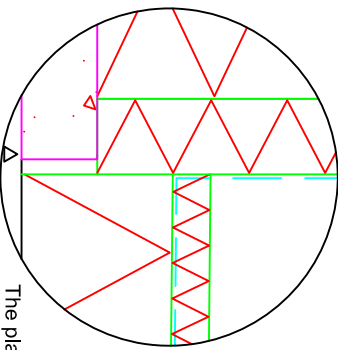
- DIRECTIONS**
- Tolerance: Length: +0-5mm  
Height: +/-2mm
  - Environment class: XC4/XF3
  - Concrete class: C50/60
  - VCT: Max 0,50
  - Fiber Reinforcement Polypropylen: 3kg/m<sup>3</sup>
  - Life expectancy class: 50 år
  - Demoulding strength: 15 MPa
  - Storage info: Support 1/3 from each side under the concrete beam.

- A. PLASTIC SYLL WIDTH 250mm.
  - B. SOFT SYLL INSULATION.
  - C. PLASTIC DAMP PROOF MEMBRANE.
  - D. HARD S300 INSULATION, (closest to the beam).
  - E. 100mm EPS INSULATION.
  - F. 150mm EPS INSULATION.
  - G. OUTER CONCRETE BEAM.
  - H. 50mm EPS INSULATION.
  - I. TAPERED INSULATION FROM 200mm TO MIN 110mm.
  - J. DRAINING MATERIAL ON THE FLAT SURFACE MINIMUM 150MM
  - N. 125mm S300 EPS INSULATION.
  - O. INNER CONCRETE BEAM.
  - S. INNER CONCRETE BEAM, (higher loads).
  - R. 100mm S300 EPS INSULATION.
- ONLY USE MATERIALS APPROVED BY BYGGSYSTEM DIREKT.

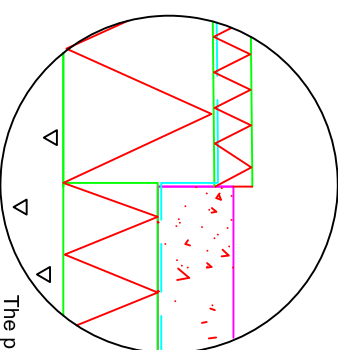
THIS FOUNDATION CAN BE APPLIED ON SOIL WITH A DESIGN FOUNDATION PRESSURE >100 kPa



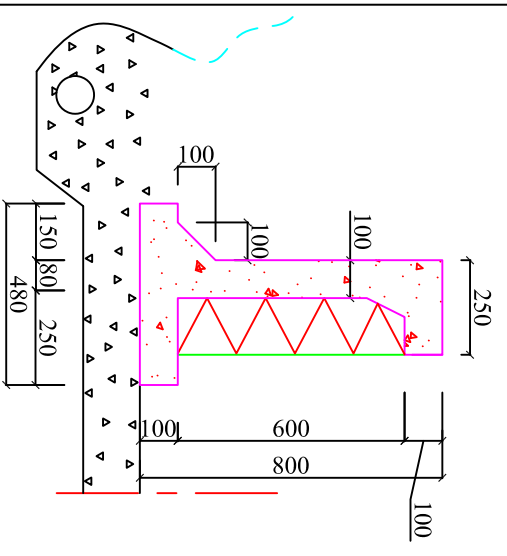
**Detail 1**  
Plastic syll on top  
Soft syll insulation  
Plastic damp proof membrane 0,20mm  
Hard S300 EPS insulation (Closest to the beam)  
The plastic folds over the S300 EPS insulation on top of the concrete beam.



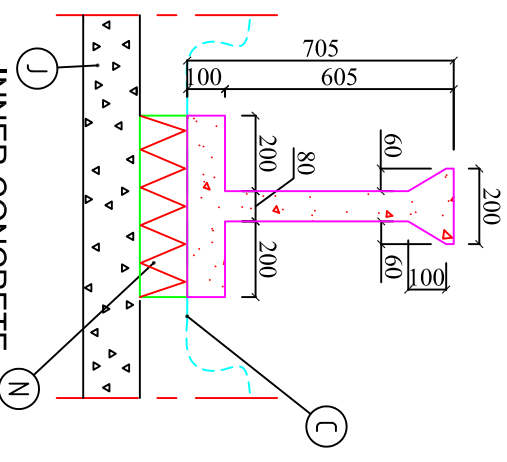
**Detail 2**  
The plastic damp proof membrane is placed in between the tapered insulation and the 50mm EPS insulation.



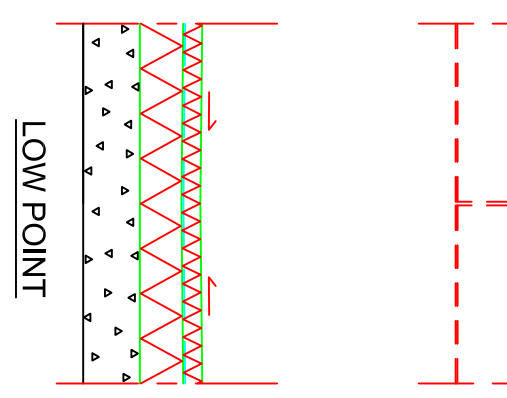
**Detail 3**  
The plastic damp proof membrane is placed under the inner concrete beam.



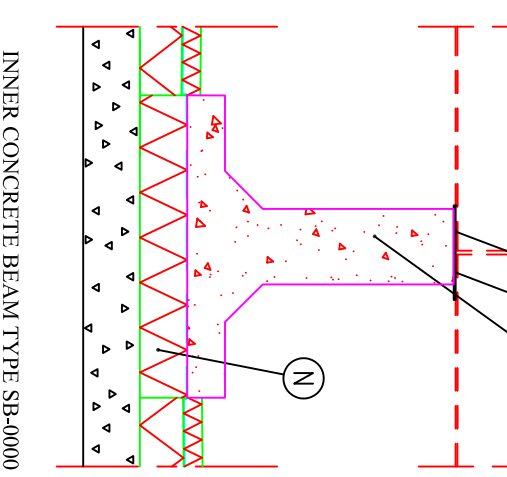
**OUTER CONCRETE BEAM TYPE S-0000**



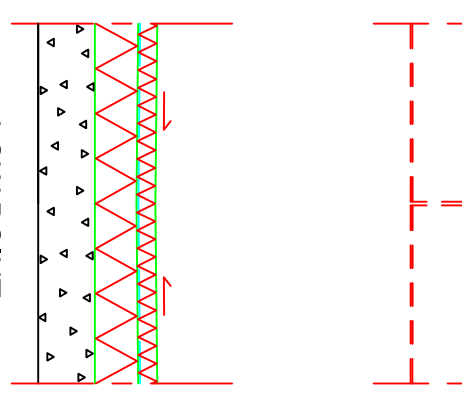
**INNER CONCRETE BEAM TYPE SI-0000**



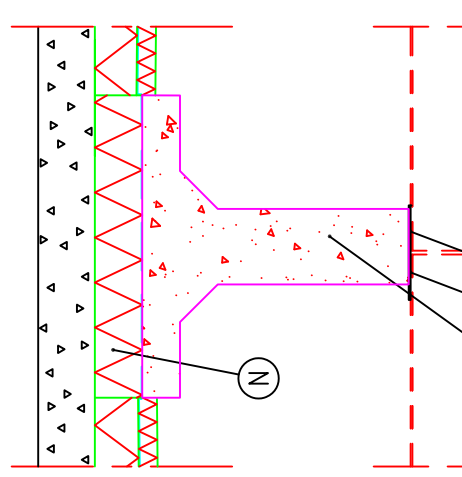
**INNER CONCRETE BEAM TYPE SE-0000**



**INNER CONCRETE BEAM TYPE SIS-0000**



**LOW POINT**



**INNER CONCRETE BEAM TYPE SB-0000**

<b>BYGGSYSTEM</b>		<b>DIREKT</b>	
Byggsystem Direkt Sverige AB, 312 22 Laholm Tel: 0430-149 90, www.byggsystemdirekt.se			
REVID	PE	DATUM	2018-08-22
REVISION	CD008-ENG	SKALA	1:20
REVISION	CD008-ENG	SKALA	1:20

REV	ÄNDRINGEN AVSER	SIGN	DATUM