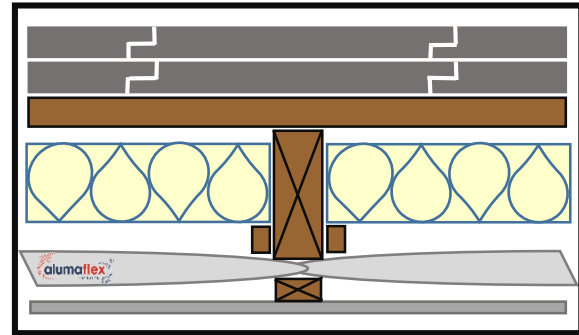


# U-Value Guide

Description ( PIR between rafters)	U-Value
Alumaflex and 90 mm PIR	0.18 W/m <sup>2</sup> K
Alumaflex and 120 mm PIR	0.15 W/m <sup>2</sup> K
Alumaflex and 150mm PIR	0.13 W/m <sup>2</sup> K

Description ( PIR between rafters)	U-Value
Alumaflex x 2 and 60 mm PIR	0.18 W/m <sup>2</sup> K
Alumaflex x 2 and 85 mm PIR	0.15 W/m <sup>2</sup> K
Alumaflex x 2 and 110mm PIR	0.13 W/m <sup>2</sup> K

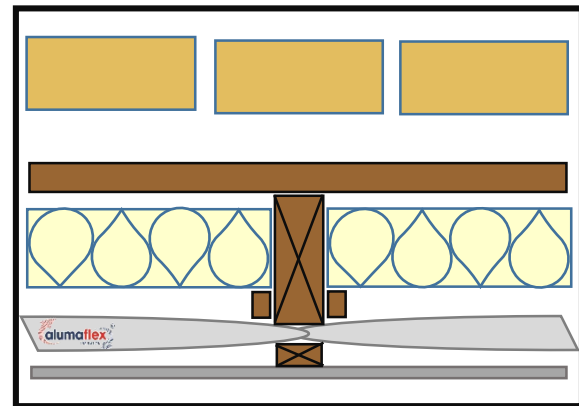
## ROOFS



## WALLS

Description ( PIR between studs)	U-Value
Alumaflex and 30 mm PIR	0.28 W/m <sup>2</sup> K
Alumaflex and 70mm PIR	0.21 W/m <sup>2</sup> K
Alumaflex and 100 mm PIR	0.18 W/m <sup>2</sup> K
Alumaflex and 160 mm PIR	0.14 W/m <sup>2</sup> K

Description ( PIR between studs)	U-Value
Alumaflex x 2	0.28 W/m <sup>2</sup> K
Alumaflex x 2 and 25 mm PIR	0.21 W/m <sup>2</sup> K
Alumaflex x 2 and 50 mm PIR	0.18 W/m <sup>2</sup> K
Alumaflex x 2 and 100 mm PIR	0.14 W/m <sup>2</sup> K



P/A below	50 mm airgap above	100mm air gap above	150mm airgap above
0.2	0.22 W/m <sup>2</sup> K	0.20 W/m <sup>2</sup> K	0.19 W/m <sup>2</sup> K
0.5	0.28 W/m <sup>2</sup> K	0.25 W/m <sup>2</sup> K	0.24 W/m <sup>2</sup> K

## FLOORS



alumaflex<sup>®</sup> is  
British Agrement  
approved for  
walls & roofs