

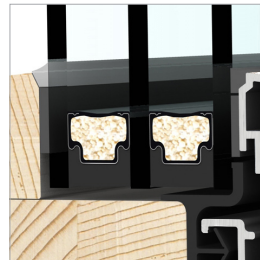
# home pure HF 210

## TIMBER/ALUMINIUM WINDOW

### TECHNICAL DATA:

- Design** Classic, square-edged and straight exterior and interior design
- Thermal insulation** Thermal insulation with standard triple glazing and aluminium spacer ( $U_g = 0.7 \text{ W/m}^2\text{K}$ )  
 $U_w = 0.98 \text{ W/m}^2\text{K}$   
  
Also available with 48 mm glazing ( $U_g = 0.5 \text{ W/m}^2\text{K}$  without krypton) at best price/performance ratio  
  
For best energy efficiency SOLAR+ glazing with  $U_g = 0.6 \text{ W/m}^2\text{K}$  and g value 62 %
- Sound insulation** Soundproofing up to 46 dB (with corresponding glazing)
- System description** 85 mm construction depth  
Highly heat insulating thermal foam (HCFC, HFC and FC free)  
FIX-O-ROUND Technology  
Fully concealed hardware  
Drainage either visible or concealed  
Triple gasket system  
Designer locking elements  
Resistance class up to RC2

I-tec



### INGENIOUS GLAZING SYSTEM

Glass panes glued to the timber frame ensure good structural integrity and high torsion.



### FULLY CONCEALED HARDWARE

No visible hardware parts as standard for better appearance, easier cleaning, but especially for air tightness from the inside.



### MODERN DESIGN

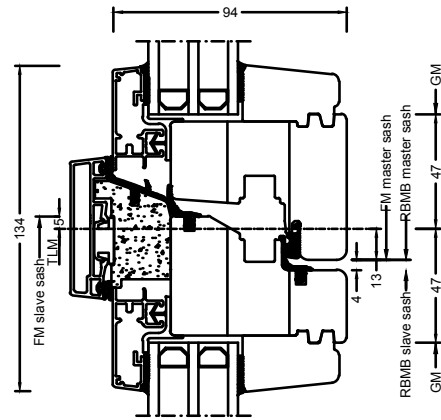
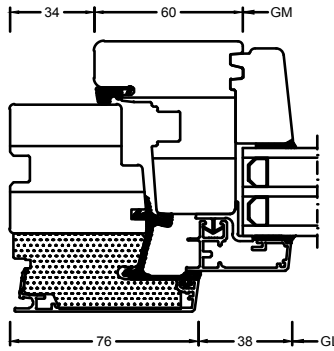
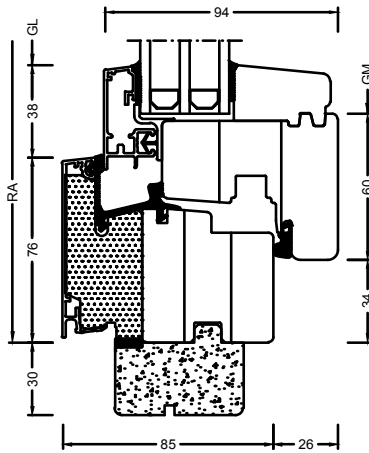
The timber/aluminium window HF 210 captivates with modern square-edged exterior design.

**Sections**

Vertical section

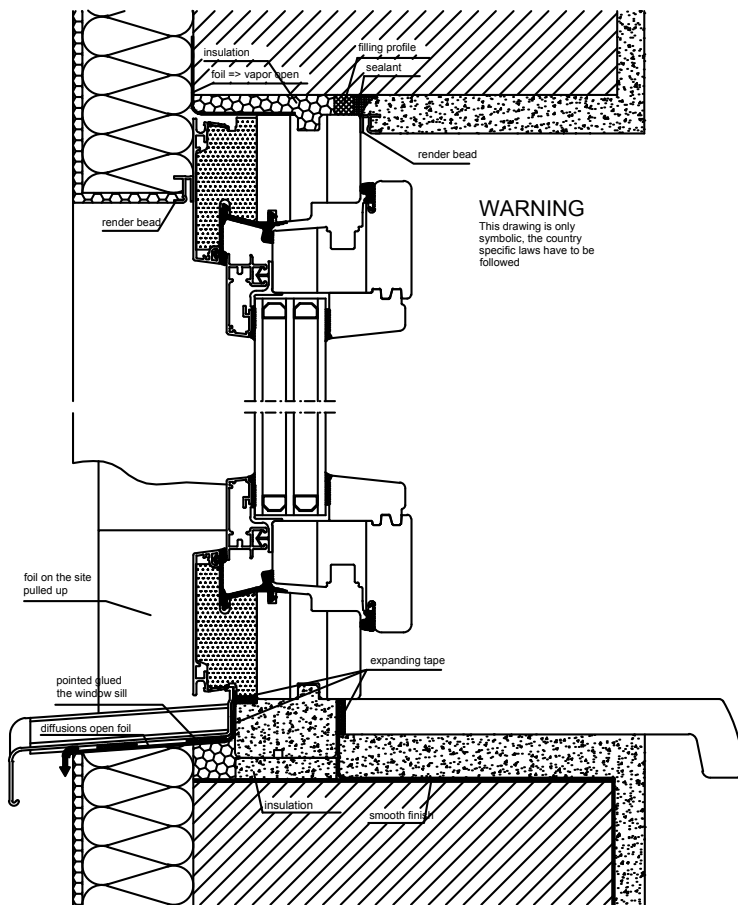
Horizontal section

Flying mullion section



**Construction connections**

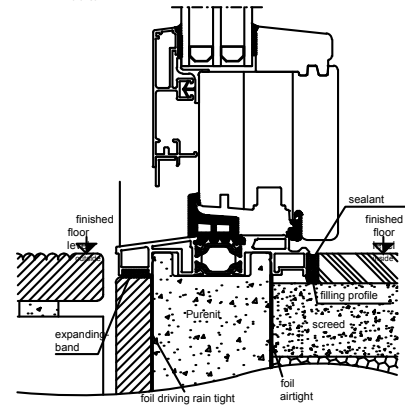
render inside and insulation outside.  
 sill on the bottom.



**WARNING**  
 This drawing is only symbolic, the country specific laws have to be followed

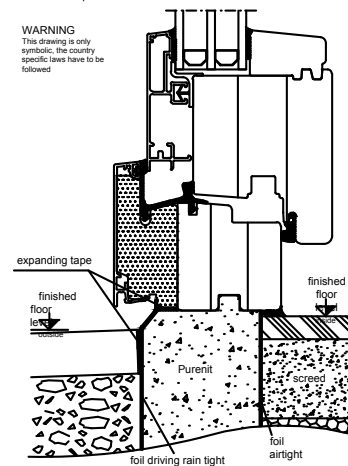
building connection with Alu-threshold 30mm.

**WARNING**  
 This drawing is only symbolic, the country specific laws have to be followed

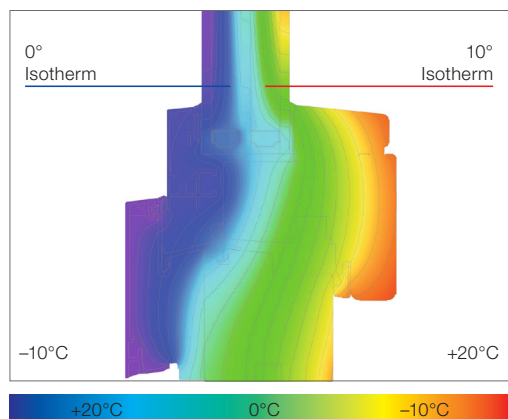


building connection with Purenit profile bottom

**WARNING**  
 This drawing is only symbolic, the country specific laws have to be followed



**ATTENTION!** The depicted drawing is symbolical only, please adhere to the national fitting guidelines such as ÖNORM B5320 in its respective valid version.



Optimal isotherm gradient to ensure low amounts of condensation.

Due to the deep glass position, tremendous construction depth and the directly glued window panes glazing LIGHT ( $U_g = 0.5 \text{ W/m}^2\text{K}$ ) can achieve a sensational  $U_w$  value of  $0.74 \text{ W/m}^2\text{K}$  (with ISO spacer).

### Technical information

- Timber frame with double peg joint
- Aluminium profiles cut in mitre with UPVC and aluminium brackets held in place and glued over the whole surface
- Outside: anodised, RAL, highly weather-resistant structure, metallic decor and timber decor colours available in aluminium
- Inside: 11 standard timber colours - RAL and NCS available
- 3 continuous gasket levels made of EPDM and Q-LON gaskets
- Glazing thicknesses 24, 36, 48 mm
- Glass panes glued all around and sealed with transparent silicone

### Values

System	Glass construction	Glass Code	Spacer	Coating	Ug	Uf	Psi	Uw	Thermal Certif.	Rw	C	Ctr	Sound Certif.
HF210	4b/18Ar/4/18Ar/b	3N2	Iso	light	0.5	1.02	0.032	0.74	YES*	36	-1	-5	YES*
				solar+	0.6	1.02	0.032	0.81	NO				
			Alu	light	0.5	1.02	0.081	0.86	YES*				
				solar+	0.6	1.02	0.081	0.93	NO				
	6b/18Ar/4/16Ar/b	33U	Iso	light	0.6	1.02	0.033	0.81	YES*	39	-2	-6	YES*
				solar+	0.7	1.05	0.033	0.89	NO				
			Alu	light	0.6	1.02	0.082	0.93	YES*				
				solar+	0.7	1.05	0.082	1.01	NO				
	4b/12Ar/4/12Ar/b	3NK	Iso	light	0.7	1.05	0.035	0.90	YES*	34	-1	-5	YES*
				solar+	0.8	1.05	0.035	0.96					
			Alu	light	0.7	1.05	0.069	0.98					
				solar+	0.8	1.05	0.069	1.00					
	8/12Kr/b4	2KA	Iso	light	1.0	1.10	0.040	1.10	YES*	37	-2	-4	YES*
				solar+	1.1	1.10	0.040	1.20	NO				
			Alu	light	1.0	1.10	0.063	1.2	YES*				
				solar+	1.1	1.10	0.063	1.26	NO				
	4/16Ar/b4	20L	Iso	light	1.1	1.10	0.034	1.20	YES*	33	-1	-4	YES*
				solar+	1.2	1.10	0.034	1.25	NO				
			Alu	light	1.1	1.10	0.060	1.2	YES*				
				solar+	1.2	1.10	0.060	1.32	NO				
	44b.2/14Ar/4/12Ar/b	3FH	Iso	light	0.7	1.05	0.035	0.90	NO	46	-1	-4	YES*
				solar+	0.8	1.05	0.035	0.96					
			Alu	light	0.7	1.05	0.069	0.98					
				solar+	0.8	1.05	0.069	1.05					
4b/16Ar/4/15Ar/b	34N	Iso	light	0.6	1.02	0.033	0.81	NO	44	-2	-6	YES*	
			solar+	0.7	1.05	0.033	0.89						
		Alu	light	0.6	1.02	0.082	0.93						
			solar+	0.7	1.05	0.082	1.01						
6b/10Ar/5/10Ar/b	3P5	Iso	light	0.8	0.87	0.034	0.91	NO	36	-	-	NO	
		Alu	light	0.8	0.87	0.034	0.97						

\*Test certificates in home pure - values for home soft and ambiente are identical