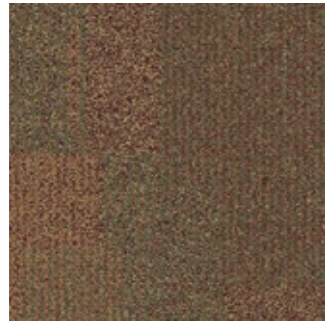
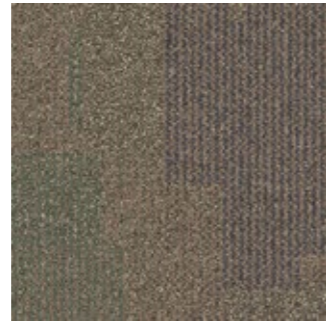


Entropy II



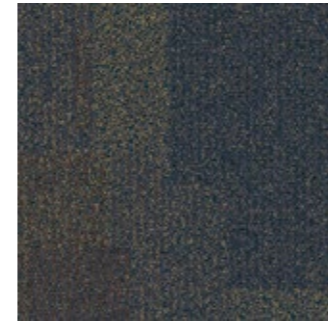
366475 Diversity



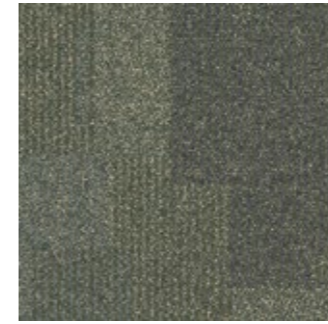
366476 Dynamics



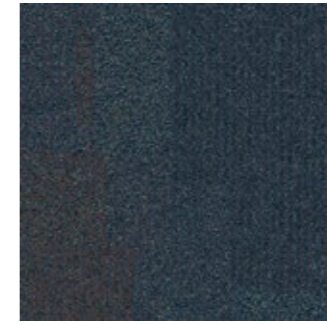
366477 Random



366478 Chance



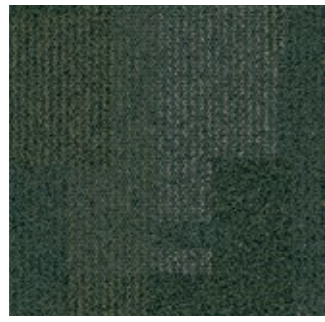
366480 Serendipity



366481 Coincidence



366482 Spontaneous



366493 Variations



366494 Chameleon



366495 Myriad



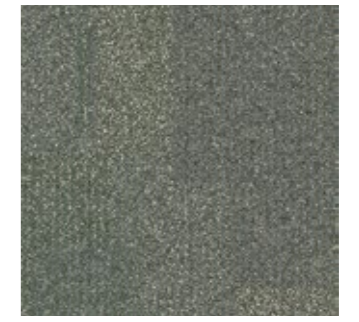
366496 Evolution



366497 Metamorphosis



366498 Transitions



366500 Change



366501 Protean



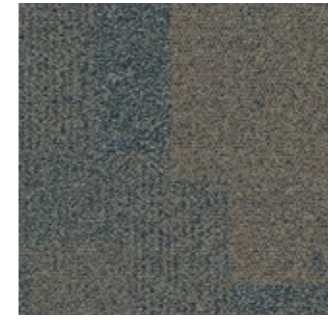
366653 Synergy



366654 Deja Vu



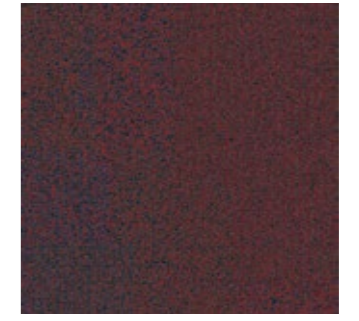
366966 Shale



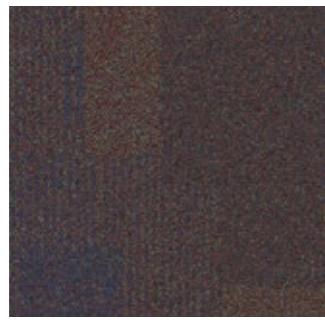
366968 Mesquite



366970 Wheat



366971 Lava



366972 Amethyst



366979 Baltic



366980 Deep Blue



366986 Abalone

Entropy II



366980 Deep Blue

Installed: Non Directional





Technical Specifications

Product Definition	Tufted Patterned Structured Tip Sheared Tile	
Konstruktion	Tuftgemusterte strukturierte "Tip-Sheared"- Schlingenqualität	
Descripción	Moqueta modular tufting bucle estructurado y pelo cortado con diseño	
Description	Dalle de moquette à velours tufté structuré, bouclé et rasé	
Type	Getufte gestructureerde tip sheared bouclé	
Descrizione	Bouclé tufted strutturato rasato	
<hr/>		
Pile Material	100% BCF Solution Dyed Nylon contains pre-consumer recycled content	
Polfasermaterial	100% Polyamid garngefärbt mit recyceltem Anteil (Prä-Konsumenten-Anteil)	
Composición Fibra	100% Poliamida BCF tintada en masa con contenido reciclado pre-consumo	
Composition	100% Polyamide BCF Teint en masse contenant des éléments recyclés	
Poolmateriaal	100% Solution Dyed Polyamide BCF, bevat pre-consumer gerecycled content	
Fibra	100% Poliammide BCF tinta in massa con contenuto riciclato pre - consumer	
Pile Yarn Weight / Poleinsatzgewicht / Peso Fibra / Poids de fibre / Poolinzetgewicht / Peso Felpa	540g/m ² ± 5%	
Total Weight / Gesamtgewicht / Peso Total Poids total / Totaalgewicht / Peso Totale	4404g/m ² ± 5%	
Pile Height / Polschichtdicke / Altura Fibra / Hauteur de la fibre / Poolhoogte / Altezza Felpa	5,0 mm ± 0,3 mm	
Total Thickness / Gesamtdicke / Espesor Total / Epaisseur totale / Totale dikte / Altezza Totale	7,0 mm ± 0,5 mm	
Gauge/Ends 10 cm / Teilung x 10 cm / Galga x 10 cm / Jauge-Rangs par 10 cm / Rijen per 10 cm / Serraggio x 10 cm	1/12 – 472	
Tufts per m² / Noppenzahl/m ² / Puntadas m ² / Densité du tuft par m ² / Aantal noppen per m ² / Densità Punti	169,920 ± 5%	
Backing Type / Rückenkonstruktion / Soporte / Sous-couche / Ruguitvoering / Sottofondo	Graphlex®	
Wear Classification / Beanspruchungsklasse / Clasificación al tráfico / Classement Gebruiksintensiteit / Resistenza all'usura	Heavy Contract (EN 1307) Class 33 / LC2	

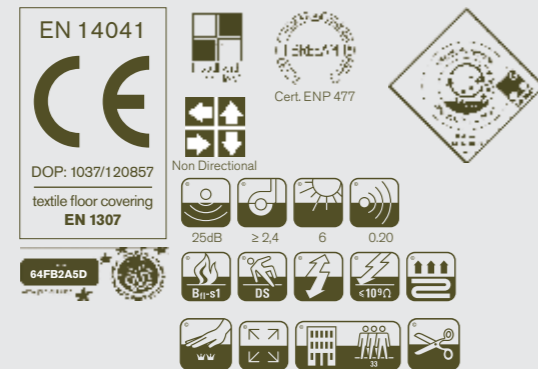
Style 36603
4m² - 16 tiles per box (50 x 50 cm ± 0,15%)

Radiant Panel / Schwerentflammbarkeit (EN ISO 9239/1)Euroclass Bfl s1 (EN ISO 13501)
(NFP 92-506) (PV No. RA 01-304) M3

Hot Metal Nut Pass, low radius of effects of ignition (BS 4790) ≤ 0,2% (ISO 2551 / EN 986)

Dimensional Stability / Dimensionsstabilität Estabilidad Dimensional / Stabilité dimensionnelle Dimensionele stabiliteit / Test Stabilità dimensionale

Sound Absorption	125Hz	250Hz	500Hz	1000Hz	2000Hz	4000Hz
	0.01	0.05	0.08	0.22	0.34	0.44



Light Values

Product	Colour No	Colour Name	L Value*	Y Value*
Entropy II	366475	Diversity	38.0	10.1
	366476	Dynamics	45.3	14.8
	366477	Random	28.6	5.7
	366478	Chance	29.4	6.0
	366480	Serendipity	44.4	14.1
	366481	Coincidence	31.2	6.7
	366482	Spontaneous	38.7	10.5
	366493	Variations	31.0	6.6
	366494	Chameleon	44.5	14.2
	366495	Myriad	30.2	6.3
	366496	Evolution	46.8	15.9
	366497	Metamorphosis	44.3	14.0
	366498	Transitions	54.8	22.7
	366500	Change	51.7	19.9
	366501	Protean	36.0	9.0
	366653	Synergy	32.8	7.5
	366654	Deja Vu	42.9	13.1
	366966	Shale	47.7	16.6
366968	Mesquite	40.9	11.8	
366970	Wheat	48.4	17.1	
366971	Lava	26.0	4.8	
366972	Amethyst	28.6	5.7	
366979	Baltic	27.5	5.3	
366986	Abalone	39.2	10.8	
366980	Deep Blue	29.9	6.2	

* **Light Value:** L Value = L according to CIE L*a*b* colour space, Y Value = Light Reflectance Value according to BS 8493
Lichtreflexionswert: L-Wert = L gemäß CIE L*a*b* Farbspektrum, Y-Wert = Lichtreflexionswert gemäß British Standard BS 8493

Valores de Reflectancia de Luz: Valor L = L según CIE L*a*b* espacio de color, Valor Y = Valor de reflectancia de luz según el estándar británico BS 8493

Valeurs concernant la lumière: Valeur L = L faisant référence à la méthode CIE L*a*b* pour la couleur, Valeur Y = Valeurs de réflectance de la lumière selon le British Standard BS 8493

Licht waarden: L Waarde = L volgens CIE L*a*b*kleurruimte, Y Waarde = Licht Reflectie Waarde volgens BS 8493

Indici di riflettanza alla luce: Indice L = L secondo CIE L*a*b* colour space, Indice Y = Indice di riflettanza alla luce secondo la norma BS 8493

Environmental Data Sheet

Construction			
Yarn system	100% BCF Solution Dyed PA 6,6		
Backing system	Graphlex®		
Recycled Content	Total	Pre consumer	Post consumer
Product average	44,57%	44,57%	0,00%
Yarn	19,85%	19,83%	0,00%
Recycled content can be subject to differences between colours. See details for individual colours on next page.			
Carbon Footprint			
Global Warming Potential (kgs CO ₂ equivalents/sq meter)			
Full life-cycle carbon footprint (following our EPD results or EPD calculation method)	Raw materials and Production:	9,4 kg CO ₂ eq./m ²	
	Delivery and installation:	0.3 kg CO ₂ eq./m ²	
	Use (10 years):	2 kg CO ₂ eq./m ²	
	End of life (waste to energy):	4.8 kg CO ₂ eq./m ²	
	TOTAL (10 years' lifetime):	16.5 kg CO ₂ eq./m ²	
CO ₂ compensation	Carbon neutral Cool Carpet® is standard		
Manufacturing			
Location	Scherpenzeel, NL Factory is certified ISO 14001 since 1996 and ISO 9001 since 1990		
Installation Impacts			
TacTiles™	Optimised for glue-free installation with TacTiles™ connectors with virtually zero VOCs		
Installation Waste	In a typical installation* using the installation method below:		
	Non-directional – 1-2% installation waste		
	For reference: 2 metre wide broadloom typically generates 7-10 % installation waste		
* In a rectangular building, installed before walls.			
End-of-life			
Alternatives to landfill	Reuse: Can be cleaned and reused in a non-critical location to extend its useful life		
	Recycling: Can be returned through the Interface ReEntry scheme and be re-used as raw material in new carpet tiles		
	Waste-to-Energy: Can be incinerated in appropriate waste to energy plant		
Indoor Air Quality			
GUT (Gemeinschaft umweltfreundlicher Teppichboden)	The product passes all requirements of Gut's testing criteria regarding hazardous substances, emissions and odour. GUT PRODIS Certificate no. 5A3127A1		
CRI (Carpet & Rug Institute)	Compliant to LEED IQ 4.3 credit (tested in Eurofins to the equivalent test of the CRI Green Label Plus)		
Compliance to Green Building Schemes			
See next page to check how our products contribute to the main green building certification schemes (BREEAM, LEED, HQE and DGNB)			
Type III Environmental Product Declaration			
EPD according to ISO 14025	This product has a type III Environmental Product Declaration, EPD-IFF-2011711-E		

Recycled content – colour level						
Colourway	Total recycled content	Pre consumer recycled content	Post consumer recycled content	Yarn recycled content	Yarn pre consumer recycled content	Yarn post consumer recycled content
366475 Diversity	44,75%	44,75%	0,00%	21,31%	21,31%	0,00%
366476 Dynamics	44,46%	44,46%	0,00%	18,94%	18,94%	0,00%
366477 Random	44,83%	44,83%	0,00%	21,90%	21,90%	0,00%
366478 Chance	44,48%	44,48%	0,00%	19,05%	19,05%	0,00%
366480 Serendipity	44,45%	44,45%	0,00%	18,86%	18,86%	0,00%
366481 Coincidence	44,64%	44,64%	0,00%	20,36%	20,36%	0,00%
366482 Spontaneous	44,64%	44,64%	0,00%	20,35%	20,35%	0,00%
366493 Variations	44,47%	44,47%	0,00%	19,03%	19,03%	0,00%
366494 Chameleon	44,48%	44,48%	0,00%	19,06%	19,06%	0,00%
366495 Myriad	44,77%	44,77%	0,00%	21,47%	21,47%	0,00%
366496 Evolution	44,56%	44,56%	0,00%	19,74%	19,74%	0,00%
366497 Metamorphosis	44,47%	44,47%	0,00%	19,03%	19,03%	0,00%
366498 Transitions	44,56%	44,56%	0,00%	19,74%	19,74%	0,00%
366500 Change	44,48%	44,48%	0,00%	19,06%	19,06%	0,00%
366501 Protean	44,51%	44,51%	0,00%	19,32%	19,32%	0,00%
366553 Synergy	44,76%	44,76%	0,00%	21,34%	21,34%	0,00%
366654 Deja Vu	44,48%	44,48%	0,00%	19,06%	19,06%	0,00%
366966 Shale	44,72%	44,70%	0,02%	21,07%	20,92%	0,00%
366968 Mesquite	44,57%	44,52%	0,05%	19,80%	19,42%	0,00%
366970 Wheat	44,46%	44,46%	0,00%	18,88%	18,88%	0,00%
366971 Lava	44,45%	44,45%	0,00%	18,81%	18,81%	0,00%
366972 Amethyst	44,44%	44,44%	0,00%	18,76%	18,76%	0,00%
366979 Baltic	44,48%	44,48%	0,00%	19,07%	19,07%	0,00%
366980 Deep Blue	44,82%	44,82%	0,00%	21,88%	21,88%	0,00%
366986 Abalone	44,63%	44,63%	0,00%	20,30%	20,30%	0,00%

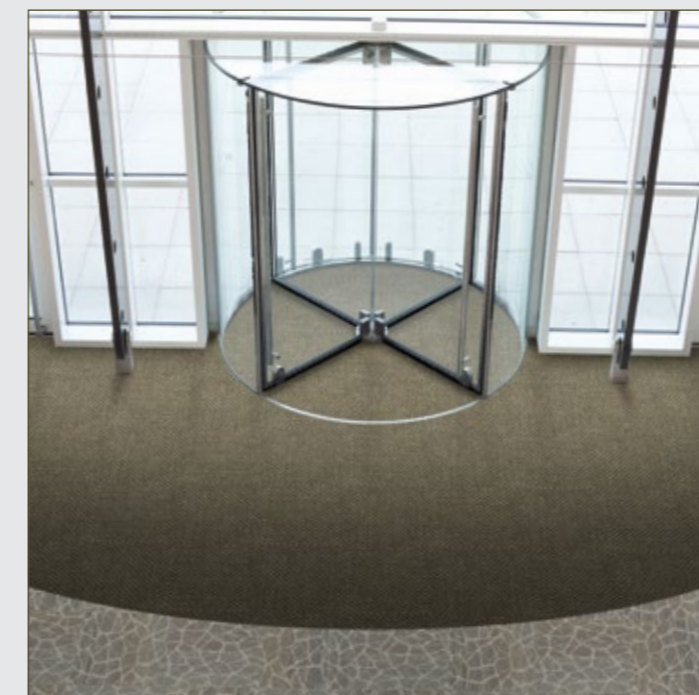
Compliance to Green Building Schemes

BREEAM (UK and international)	<p>BRE Green Guide Ratings: Office - A rated Education - A rated Health Care - A rated Retail (by fashion) - A+ rated</p> <p>Potential contribution to following categories and credits: Hea 02 - Indoor air quality – minimising sources of air pollution Hea 05 - Acoustic Performance Mat 01 - Life Cycle Impacts Mat 05 - Designing for robustness Wst 01 - Construction Waste Management</p>
LEED 2009 US	<p>Potential direct or indirect contribution to following categories and credits:</p> <p>Indoor Environmental Quality Credit 4.1 Low Emitting Materials: Adhesive & Sealants Credit 4.3 Low Emitting Materials: Carpet Systems</p> <p>Materials and Resources Credit 2.1 Construction Waste Management Credit 4.1 Recycled content Credit 5.1 Regional Materials</p> <p>Innovation and Design Credits 1-4 1 Climate Neutral Products Credits 1-4 1 Pilot Credit 43, Certified Products</p>
HQE (FR)	<p>Potential direct or indirect contribution to several points within following targets:</p> <p>2. Integrated choice of products and construction materials 3. Low site nuisance 9. Acoustic comfort 10. Visual comfort 11. No unpleasant smells 12. Sanitary quality of areas 13. Sanitary air quality</p>
DGNB (D)	<p>Potential direct or indirect contribution to following criterion</p> <p>ENVIRONMENTAL QUALITY ENV1.2 Local Environmental Impact</p> <p>ECONOMIC QUALITY ECO1.1 Building-Related Lifecycle Costs ECO2.1 Efficient Use of Space</p> <p>SOCIOCULTURAL AND FUNCTIONAL QUALITY SOC1.2 Indoor Air Quality SOC1.3 Acoustic Comfort</p> <p>TECHNICAL QUALITY TEC1.5 Ease of Cleaning and Maintenance TEC1.6 Ease of Dismantling and Recycling</p>



TacTiles™

- A smarter, more sustainable way to install carpet tiles
- No need for liquid adhesives
- Fitting tiles is quick, clean and easy and the process virtually eliminates emissions
- No damage to sub floors, and nothing to stop you lifting or moving the carpet whenever you want



Entrance Matting

Incredibly tough, hard-wearing and practical; indoor entrance matting acts as the first line of defence to any interior by removing almost 100% of dirt, rain and mud before it's walked into your flooring.

Both of the products in our commercial entrance matting range – Barricade and Foyer – are resilient, functional, easy to maintain and stylish. And it's for these reasons that our barrier matting forms an essential part of any maintenance programme needed to keep your floorcovering looking its very best.