



THE LUXURY TRAVELLING LOO COMPANY

MODUVAC® Vacuum Loo System Dark Oak



Image shown is Panelled Disabled

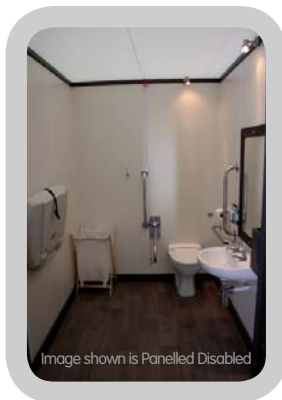


Image shown is Panelled Disabled

- The Dark Oak MODUVAC® is built from solid oak.
- The hand basin units are available with three ceramic basins and infra taps.
- The cubicles are fitted with white vacuum loo pans.
- The floors in both the urinal and cubicle areas are of dark grey slate tiles.

The modular system comprises various components that may be mixed and matched to suit each event's individual aspects such as quantity of guests, proportion of ladies/gentlemen and nature of the event. All modules operate on vacuum technology which means there is no requirement for chemical. The waste tanks are positioned outside the structure.

Requirements for Operation

- The MODUVAC® loos need to be installed inside a structure which you must floor, carpet, line and create baffle entrances.
- Equipment is delivered on an articulated lorry so access should be ensured for the vehicle and forklift access into structure.
- Constant power supply is required for installation and during the event, quantity varies according to the level of stock.
- Constant fresh water supply with good pressure for installation and during the event. The fresh water is necessary for both the hand basins and loo pans.

Accessories

- Consumables – Scottish Fine Soaps and Hand Lotion, loo paper and paper hand towels are supplied as standard. Cotton hand towels and vanity baskets (facial tissues, tights, hair grips, body spray etc.) can be provided at the client's request.
- Pictures - Pictures are mounted in both the cubicle and urinal areas, the picture frames are designed so that the images are interchangeable allowing you to provide us with your own choice to complement the event.

Module Layouts

CUBICLE MODULE

3 cubicles
Measures:
8' (2.44 m) length
4' (1.22 m) width
7'7" (2.31 m) high

1 CUBICLE, 2 URINALS MODULE

1 cubicle, 2 urinals
Measures:
8' (2.44 m) length
4' (1.22 m) width
7'7" (2.31 m) high

DISABLED MODULE

1 cubicle, 1 hand basin
Measures: 8' (2.44 m) length
6' (1.83 m) width
7'8" (2.34 m) high
4' (1.22 m) ramp

HAND BASIN MODULES

3 hand basins
Measures:
8' (2.44 m) length
2' (0.61 m) width
7'4" (2.24 m) high

...beautiful loos ...beautiful events