

Interguard - IGPX8 ●●●●

INTERGUARD IGPX8 is a sophisticated fully programmable door interlock controller. The system allows up to 8 doors to be interlocked in a multitude of combinations. See examples on page 2.

A simple programming system allows for the on-site configuration of site specific requirements. This also allows for the instant alteration of the interlocking to meet customers' ever changing needs.

As with all interlock systems from Hoyles, the IGPX8 can operate in one of two operational modes:

Mode 1. Keep all doors closed but unlocked then lock the other doors if a door is opened.

Mode 2. Keep all doors closed and locked and release the relevant door on request only if available to be released ie all other doors are locked.

In Mode 2 operation, the method of request to release can be any access control system, keypad etc or in the case of non-secure interlocking this can be straight forward push buttons.

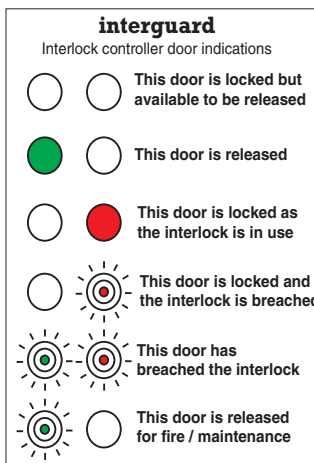
Fire alarm inputs allow the operation of the IGPX8 to be interrupted. One option will release all doors, the other keeps doors locked but allows more than one door to be released at a time.

Red and Green operational indicators are provided at each door as shown below. These provide invaluable feedback to users.

An integral 240v / 12vdc 5A PSU is incorporated to cater for control and indication, and to supply power to the door locks.

A full range of accessories is available including S1718S - Press to release buttons with LED indicators, S1717S - LED indicators, S1788PY - Sounder LED unit for breach indications, RP-GS-02 - Emergency release Call Point, plus a range of magnetic locks and door contacts on request.

- Programmable interlock controller
- Up to 8 doors
- Fully flexible configuration
- Integral 12vdc 5A power supply
- Secure or non-secure interlocking
- Status indication at each door
- Fire alarm 1 input releases all doors
- Fire alarm 2 input disables interlocking
- Breach relay output if a door is forced open.
- Breach relay output if a door remains open after use
- Breach relay output if a request to release remains for an extended period
- Dwell time adjustable 0, 5, 10 & 20 secs
- Door Open Too Long 20s, 1min, 10mins & off
- Full range of accessories available



S1717S



S1718S



S1719S



RP-GS-02



S1788PY



S1726S



Hoyles Electronic Developments Ltd

T. 01744 886600

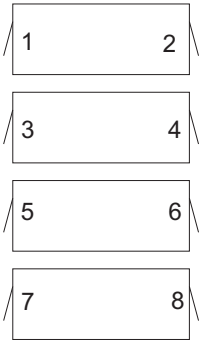
F. 01744 886607

E. sales@hoyles.com

W. www.hoyles.com

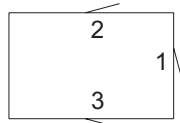
Example Scenarios for IG PX8

The scenarios below give some basic ideas of how the IG PX8 can be used. This is a limited set of scenarios, the IG PX8 is capable of virtually any combination of interlocking that may be required.



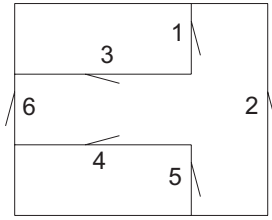
Scenario 1

4 separate 2 door interlocks



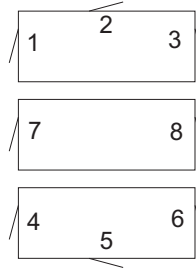
Scenario 2

2 separate 3 door interlocks



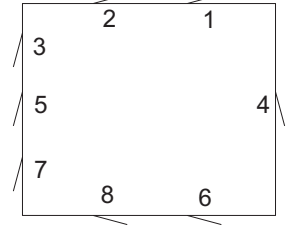
Scenario 3

2 x 3 and 1 x 2 door interlocks with door 2 common to all interlocks.
1,2 and 3 interlocked
2,4 and 5 interlocked
2 and 6 interlocked



Scenario 4

2 x 3 and 1 x 2 door interlocks with no common doors.
1,2 and 3 interlocked
4,5 and 6 interlocked
7 and 8 interlocked



Scenario 5

7 x 2 door interlocks with door 4 common to all.
4 and 1 interlocked
4 and 2 interlocked
4 and 3 interlocked
4 and 5 interlocked
4 and 6 interlocked
4 and 7 interlocked
4 and 8 interlocked

Need more information?

Hoyles have a huge amount of experience in solving interlocking problems across many industries, from high security applications, cash handling, jewellers and police stations to critical applications in pharmaceutical, medical and food production.

Whatever your interlocking problem, Hoyles will have the answer. Call us now to discuss your requirements in detail.

Tel +44(0)1744 886600

Interguard - the simple practical approach to interlocking