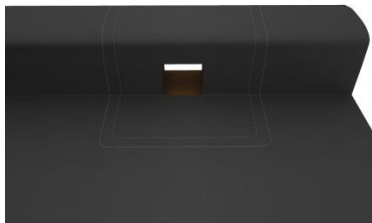


## INSTALLATION OF A SCUPPER OUTLET

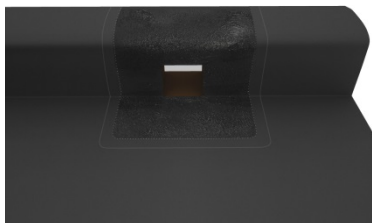
Below is a bonded EPDM rainwater explained in a few steps. In principle, the valid application instructions of the manufacturer must be taken into account. During the processing should be given a free reverse voltage on a clean, dry surface and a frost-free environment. A clear instruction is also available on the packaging of *hertalan ks137/ks96*.



---

Place the scupper outlet section into the correct position and mark both the outside line and an inner line 20mm from the outer line.

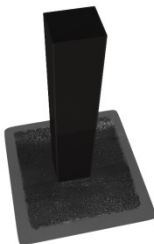
---



---

Within the inner line apply an even application of *hertalan ks137* contact adhesive, with either a stiff brush or fleece roller.

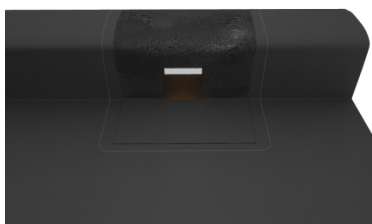
---



---

On the back of the scupper outlet apply an even application of *hertalan ks137* contact to the EPDM flange leaving the outer 20mm free.

---



---

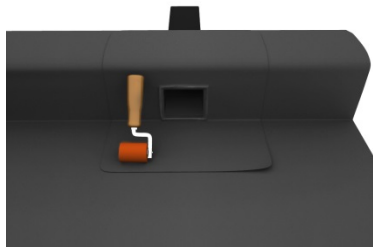
When the *ks137* contact adhesive is 'touch dry' the scupper outlet is ready to be fitted into the opening.

---

## INSTALLATION SCUPPER OUTLET HERTALAN EASY COVER EPDM MEMBRANE



Install the scupper outlet carefully and without air pockets ensuring the vertical part is fitted first. Use a metal roller to tightly fit the remaining piece of EPDM flange into the angle changes.



The remaining horizontal piece of the EPDM flange should now be fitted and then both horizontal and vertical areas compressed by rolling with a silicone roller.



Apply *hertalan ks96* to the remaining width of 20mm. Compress the seam connection with a silicone roller ensuring that the sealant has a thickness of at least 1mm.



The excess sealant must be neatly pointed.

