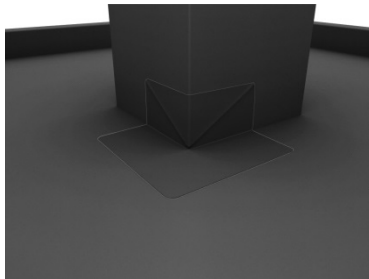


## INSTALLATION OF A PRE-FABRICATED EXTERNAL CORNER

Below is the installation of an external corner explained in a few steps. The HERTALAN<sup>®</sup> external corner is available in both 90 and 45 degree. In principle, the valid application instructions of the manufacturer must be taken into account. The corner should be installed tension free onto a clean, dry surface and in a frost-free environment.

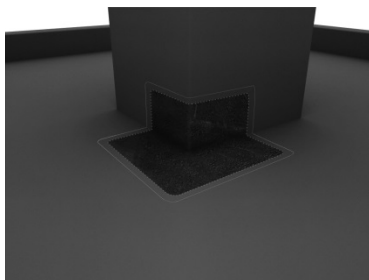


---

The external angle must always be cut so that it is overlapped by the HERTALAN<sup>®</sup> prefab external corner.

Place the corner on the surface and mark both the outside edge and an internal tag line 20 mm inside.

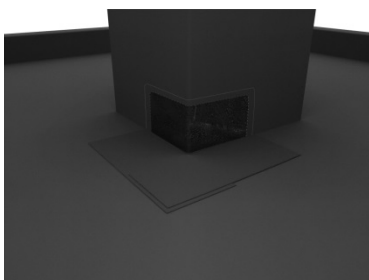
---



---

Apply *ks137* contact adhesive on the surface and the back of the external corner with a stiff brush ensuring the 20 mm on the outside edge is kept free of adhesive.

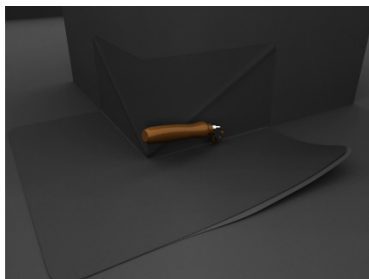
---



Let the *ks137* contact adhesive become "touch dry".

To prevent direct adhesion to the surface lay down a few spare pieces of hertalan EPDM.

---

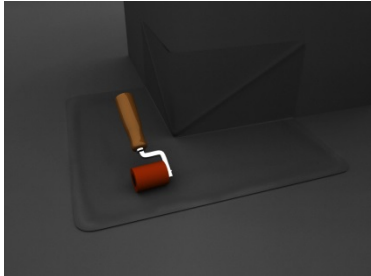


---

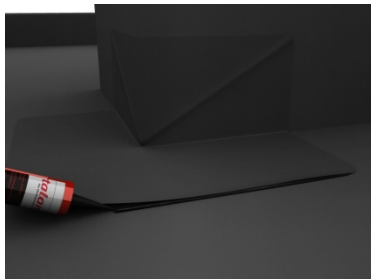
Carefully place the external corner into position taking care not to trap air. Remove the first spare piece of HERTALAN<sup>®</sup> EPDM and roll tightly into the angle with a brass roller.

---

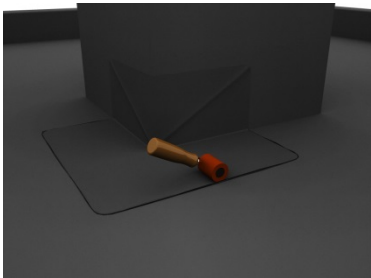
## INSTALLATION OF A HERTALAN EASY COVER PRE-FORMED EXTERNAL CORNER



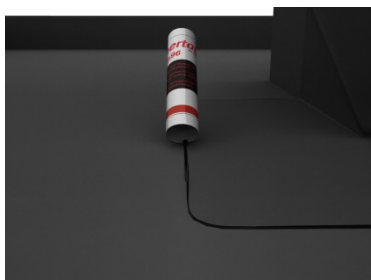
Remove the remaining spare pieces of HERTALAN® EPDM and roll across the external corner with a silicone roller.



Apply ks96 adhesive sealant to the remaining width of 20mm adjacent to the previously adhered areas.



Compress the seam along both the length and width of the external corner so that the sealant has a minimum thickness of 1 mm.



Remove the excess sealant by neatly pointing the outer edge using the back of the sealant cartridge.

