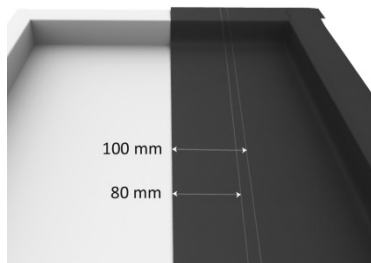


BONDED SEAM

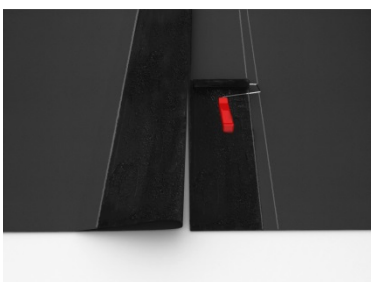
Below is a bonded EPDM seam explained in a few steps. In principle, the valid application instructions of the manufacturer must be taken into account. During the processing should be given a tension free reverse on a clean, dry surface and a frost-free environment. Clear instruction diversion is also available on the packaging of *hertalan ks137/ks96*.



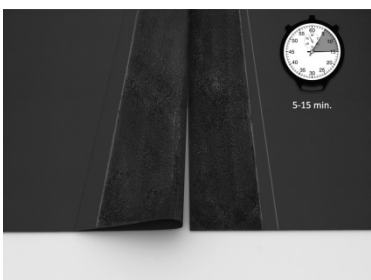
Mark the EPDM with two lines 80mm and 100mm from the edge.



Peel back the overlapping membrane from the outside line position approximately 150mm.



On both sides of the EPDM apply an even coating of *ks137* contact adhesive with either a stiff brush or fleece roller into the 80mm width, leaving the outer 20mm free.



When the contact adhesive is touch dry, typically within 5-15 minutes, depending on weather conditions the seam can be carefully closed together. Always work from the centre to the sides and ensure there are no air pockets.

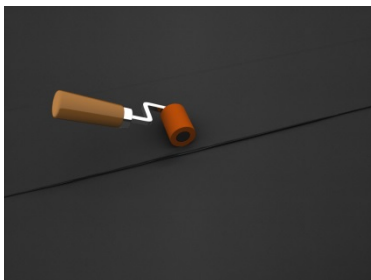
BONDED SEAM HERTALAN EASY COVER EPDM MEMBRANE



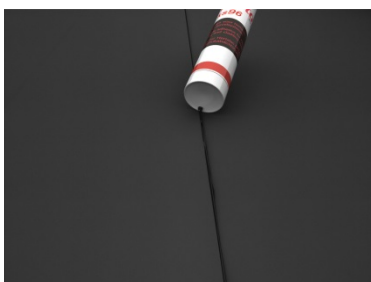
Compress the EPDM together using a silicone roller, rolling across the seam.



Apply *hertalan ks96* adhesive sealant into the remaining 20mm width adjacent to the contact adhesive ensuring a minimum application thickness of 1mm.



Compress the seam lengthways ensuring that the sealant has a minimum thickness of 1mm.



Remove the excess sealant by neatly pointing the outer edge.

