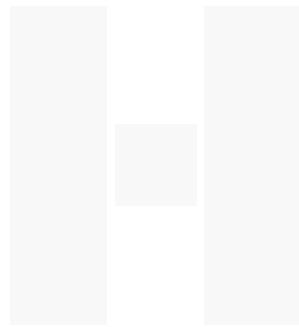


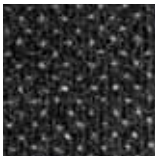
Heavy Contract Carpet and Tiles



**Heckmondwike**  
Quality in every fibre



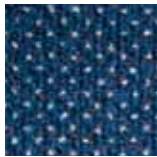
**M**  
Montage  
Creative Range



Anthracite



Flint



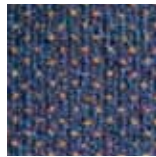
Indigo



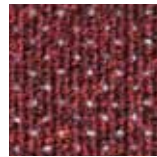
Sapphire



Blueberry



Amethyst



Claret



Ruby



Topaz



Bronzite



Cobalt



Pacific Blue



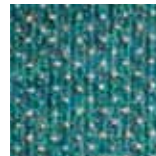
Magenta



Cerise



Citrine

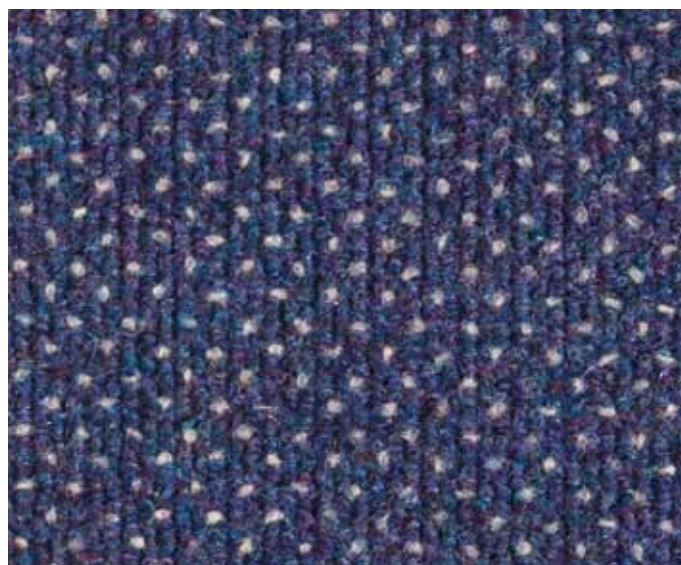




Turquoise

# Heckmondwike Montage

Creative Range

Innovative Montage with its distinctive, random textured, surface design is specified for many education and commercial projects where aesthetic appearance and performance are equally important. With a wide range of colour options, Montage is a creative floor finish that looks great in the most demanding environments.



Specification	Montage	
Fibre Construction (Sheet)	45% Polypropylene, 30% Polyamide, 25% Modacrylic	
Fibre Construction (Tile)	85% Polypropylene, 15% Polyamide	
Colour Fastness	Light (BS EN ISO 105:B02) 6 Wet Rubbing (BS EN ISO 105:B01) 4-5 Dry Rubbing (BS EN ISO 105:X12) 4-5	
Flammability	BS5287 Assessment and labelling of Textile Floorcoverings tested to BS4790 (Hot Metal Nut Test) - Low Radius of Char	
	BS EN 13501:2002 Euroclass C <sub>ff</sub> -s1 (Sheet) Euroclass B <sub>ff</sub> -s1 (Tile)	
Antistatic	Suitable for use in computer rooms	
Formats	Sheet 	Tiles 
Backing	-	Bitumen
Size	2 metre and 4 metre	50cm x 50cm
Weight	1075gm metre <sup>2</sup>	4075gm metre <sup>2</sup>
Thickness	8mm	9.30mm
BREEAM Rating	A+ (Certificate 363 for office, schools & retail)	A (Certificate 363 for office, schools & retail)



BESA



Manufactured in the UK

E & OE

Heckmondwike FB reserves the right to change or modify product specifications without giving prior notice. Colours are limited to the print process and may differ slightly to the actual product.

05/2012

 **Heckmondwike**  
Quality in every fibre

Heckmondwike FB, A division of  
National Floorcoverings Ltd.  
Wellington Mills, Liversedge,  
West Yorkshire WF15 7FH

**Sales:** 01924 406161 - Admin: 01924 410544

**Free Fax:** 0800 136769

**sales@heckmondwike-fb.co.uk**

**www.heckmondwike-fb.co.uk**