

## HMCS Brickwork Continuous Support - Introduction

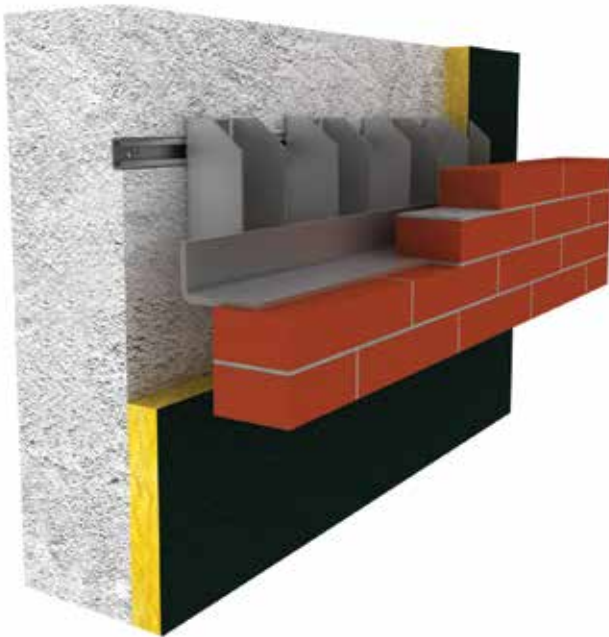
The **HMCS** brickwork continuous supports consists of a series of U brackets with welded angles. There are welded milled shims on the U brackets that enable secure positioning in the vertical axis, after adjustment.

These brackets can be used in load categories up to 14 kN and can be used for projection sizes from 130 to 230 mm. Vertical adjustability is possible up to 25 mm and adjustability of the projection size is made up to 10 mm provided full height shims are used. The **HMCS** brickwork brackets can be designed and manufactured in a wide range of shapes and dimensions to suit the requirements of the project.

The **HMCS** continues brickwork supports are available in 1,5 metres and can be manufactured with either 3, 4 or 5 U brackets, depending on the load specifications. These products are available in stainless steel 1.4301 (AISI 304) and 1.4401 (AISI 316)



HMCS Brickwork Continuous Support



• Perspective picture of brick facing installation with **HMCS** continuous support

Type 1 Continuous support with 5 welded brackets



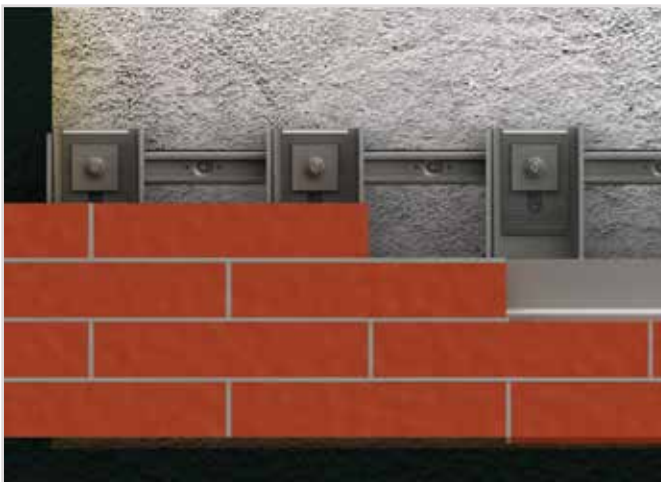
Type 2 Continuous support with 4 welded brackets



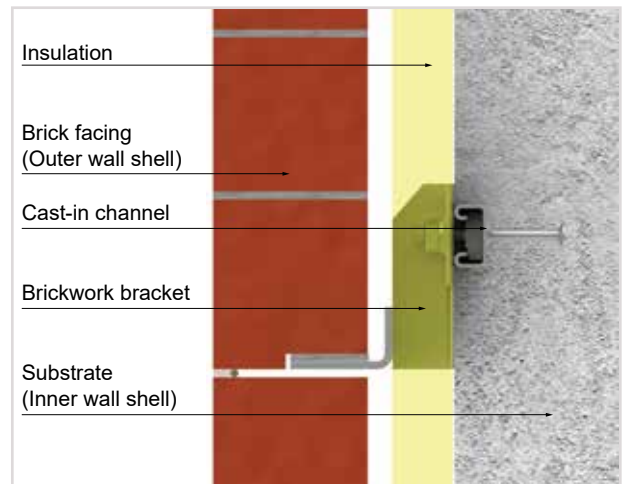
Type 3 Continuous support with 3 welded brackets



• available up to 1,5 metres with 3 different bracket spacings.

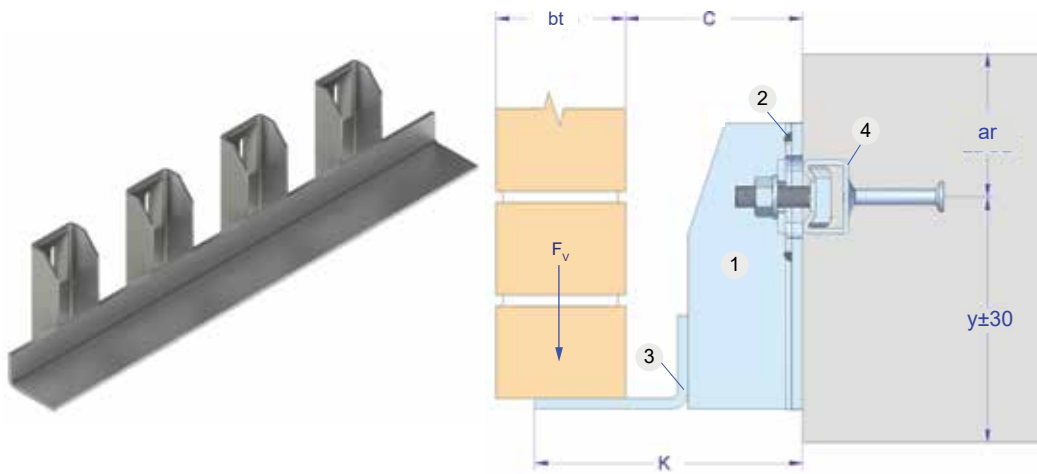


• Elevation picture of brick facing installation with **HMCS** supports



• Section picture of brick facing wall

## HMCS Brickwork Continues Support Bracket - Product Details



Support set elements:

- 1 - U Shaped bracket with vertical slot hole
- 2 - Welded serrated washer
- 3 - Welded support plate
- 4 - Anchor channel for attachments

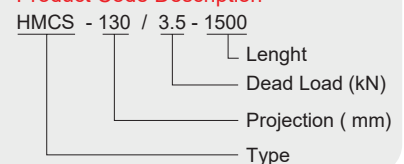
Product Code	Technical Details						
	Projection	Dead Load	Cavity	Bolt Height	Bolt Size	Bolt Spacing	Anchor Channel
	K (mm)	Fdw (kN)	C (mm)	X (mm)	E.b. (mm)	SC	CI (mm)
HMCS-130/3.5	130	3.50	60	115	M10x90	460	28/15
HMCS-150/3.5	150		80				
HMCS-170/3.5	170		100				
HMCS-190/3.5	190		120				
HMCS-210/3.5	210		140				
HMCS-230/3.5	230	160					
HMCS-130/7	130	7.00	60	115	M12x110	370	38/17
HMCS-150/7	150		80				
HMCS-170/7	170		100				
HMCS-190/7	190		120				
HMCS-210/7	210		140				
HMCS-230/7	230	160					
HMCS-130/10.5	130	10.50	60	135	M12x110	400	40/25
HMCS-150/10.5	150		80				
HMCS-170/10.5	170		100				
HMCS-190/10.5	190		120				
HMCS-210/10.5	210		140				
HMCS-230/10.5	230	160					
HMCS-130/14	130	14.00	60	150	M16x130	350	49/30
HMCS-150/14	150		80				
HMCS-170/14	170		100				
HMCS-190/14	190		120				
HMCS-210/14	210		140				
HMCS-230/14	230	160					
HMCS-130/18	130	18.00	60	150	M16x130	300	49/30
HMCS-150/18	150		80				
HMCS-170/18	170		100				
HMCS-190/18	190		120				
HMCS-210/18	210		140				
HMCS-230/18	230	160					

• Material : Stainless Steel 1.4301 (AISI 304-A2) & 1.4401 (AISI 316-A4) • Load capacities refer to fixings in concrete  $\geq$  C20/25 • Loads stated are allowable loads • Other sizes are available for production upon request • Bolts and channels are provided separately • Structural calculation reports are available upon order

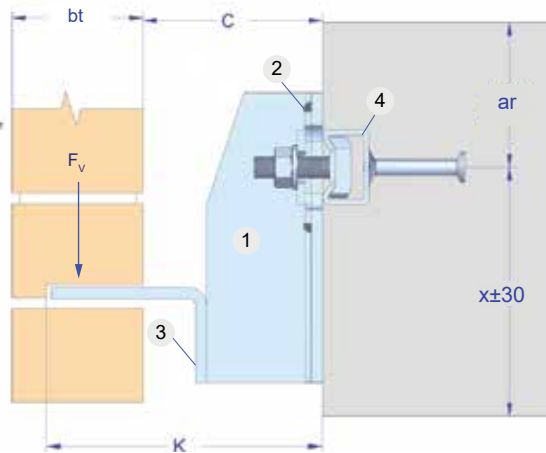
### HMCS Brickwork Continuous Support

The continuous brickwork supports are available in 1.5 metres as a standard length and can be specially designed to meet the application requirements. Adjustability in the vertical axis is made with milled serrated washers and a maximum of 10 mm lateral adjustability possible with full height shims

### Product Code Description



**HMCS-UT Brickwork Continues Support Bracket - Product Details**



- Support set elements:
- 1 - U Shaped bracket with vertical slot hole
  - 2 - Welded serrated washer
  - 3 - Welded support plate
  - 4 - Anchor channel for attachments

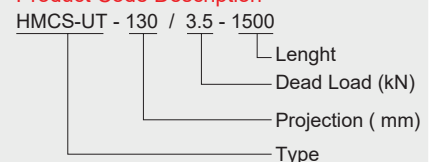
Product Code	Technical Details						
	Projection	Dead Load	Cavity	Bolt Height	Bolt Size	Bolt Spacing	Anchor Channel
	K (mm)	Fdw (kN)	C (mm)	X (mm)	E.b. (mm)	SC	CI (mm)
HMCS-UT-130/3.5	130	3.50	60	115	M10x90	460	28/15
HMCS-UT-150/3.5	150		80				
HMCS-UT-170/3.5	170		100				
HMCS-UT-190/3.5	190		120				38/17
HMCS-UT-210/3.5	210		140				
HMCS-UT-230/3.5	230		160				
HMCS-UT-130/7	130	7.00	60	115	M12x110	370	38/17
HMCS-UT-150/7	150		80				
HMCS-UT-170/7	170		100				
HMCS-UT-190/7	190		120				40/25
HMCS-UT-210/7	210		140				
HMCS-UT-230/7	230		160				
HMCS-UT-130/10.5	130	10.50	60	135	M12x110	400	40/25
HMCS-UT-150/10.5	150		80				
HMCS-UT-170/10.5	170		100				
HMCS-UT-190/10.5	190		120				49/30
HMCS-UT-210/10.5	210		140				
HMCS-UT-230/10.5	230		160				
HMCS-UT-130/14	130	14.00	60	150	M16x130	350	49/30
HMCS-UT-150/14	150		80				
HMCS-UT-170/14	170		100				
HMCS-UT-190/14	190		120				
HMCS-UT-210/14	210		140				
HMCS-UT-230/14	230		160				
HMCS-UT-130/18	130	18.00	60	150	M16x130	300	49/30
HMCS-UT-150/18	150		80				
HMCS-UT-170/18	170		100				
HMCS-UT-190/18	190		120				
HMCS-UT-210/18	210		140				
HMCS-UT-230/18	230		160				

• Material : Stainless Steel 1.4301 (AISI 304-A2) & 1.4401 (AISI 316-A4) • Load capacities refer to fixings in concrete ≥ C20/25 • Loads stated are allowable loads • Other sizes are available for production upon request • Bolts and channels are provided separately • Structural calculation reports are available upon order

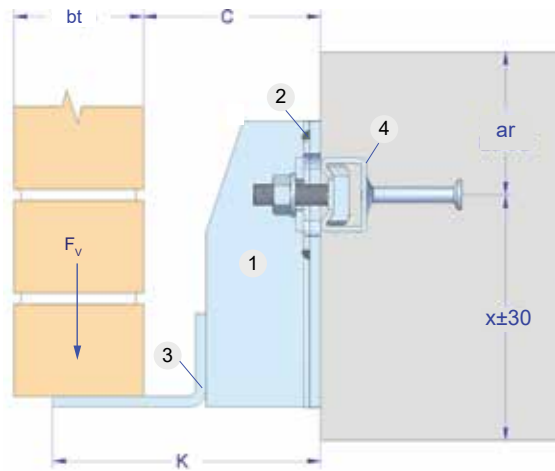
**HMCS-UT Brickwork Continuous Support**

The continuous brickwork support is similar to the HMCS-UT brickwork continues support however the welded angle support is positioned upside down. This raises the support level of the brickwork installation. This can be manufactured according to the requirements of the application.

**Product Code Description**



## HMS-SB Brickwork Support Bracket - Product Details



- Support set elements:
- 1 - U Shaped bracket with vertical slot hole
  - 2 - Welded serrated washer
  - 3 - Welded support plate
  - 4 - Anchor channel for attachments

Product Code	Technical Details						
	Projection	Dead Load	Cavity	Bolt Height	Bolt Size	Bolt Spacing	Anchor Channel
	K (mm)	F <sub>dw</sub> (kN)	C (mm)	X (mm)	E.b. (mm)	SC	CI (mm)
HMCS-SB-130/3.5	130	3.50	60	115	M10x90	460	28/15
HMCS-SB-150/3.5	150		80				
HMCS-SB-170/3.5	170		100				
HMCS-SB-190/3.5	190		120				
HMCS-SB-210/3.5	210		140				
HMCS-SB-230/3.5	230	160					
HMCS-SB-130/7	130	7.00	60	115	M12x110	370	38/17
HMCS-SB-150/7	150		80				
HMCS-SB-170/7	170		100				
HMCS-SB-190/7	190		120				
HMCS-SB-210/7	210		140				
HMCS-SB-230/7	230	160					
HMCS-SB-130/10.5	130	10.50	60	135	M12x110	400	40/25
HMCS-SB-150/10.5	150		80				
HMCS-SB-170/10.5	170		100				
HMCS-SB-190/10.5	190		120				
HMCS-SB-210/10.5	210		140				
HMCS-SB-230/10.5	230	160					
HMCS-SB-130/14	130	14.00	60	150	M16x130	350	49/30
HMCS-SB-150/14	150		80				
HMCS-SB-170/14	170		100				
HMCS-SB-190/14	190		120				
HMCS-SB-210/14	210		140				
HMCS-SB-230/14	230	160					
HMCS-SB-130/18	130	18.00	60	150	M16x130	300	49/30
HMCS-SB-150/18	150		80				
HMCS-SB-170/18	170		100				
HMCS-SB-190/18	190		120				
HMCS-SB-210/18	210		140				
HMCS-SB-230/18	230	160					

• Material : Stainless Steel 1.4301 (AISI 304-A2) & 1.4401 (AISI 316-A4) • Load capacities refer to fixings in concrete ≥ C20/25 • Loads stated are allowable loads • Other sizes are available for production upon request • Bolts and channels are provided separately • Structural calculation reports are available upon order

### HMCS-SB Brickwork Support Bracket

The brickwork support bracket is an angle with a single bracket that is used for the installation of bricks and stone blocks on tot straight and curves walls. This brick support bracket can be supplied with welded pins and an angle with various degress used for installing stone blocks from the rear surface.

### Product Code Description

HMCS-SB - 130 / 3.5

