



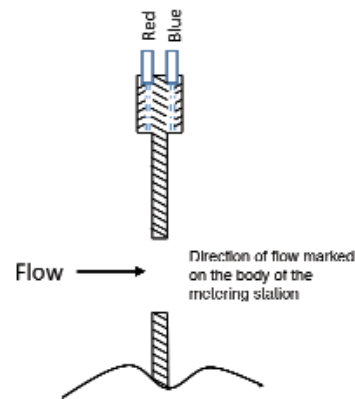
# Fig. M4000 Stainless Steel Metering Stations

## FEATURES & BENEFITS

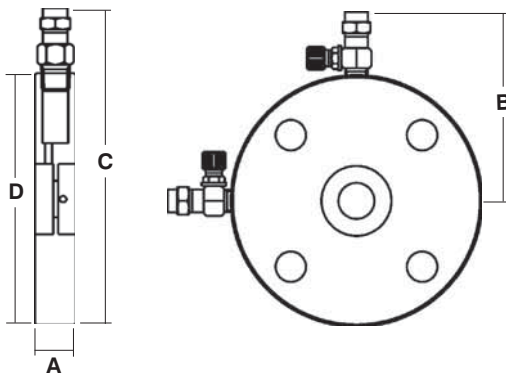
- Suitable for high pressure applications
- Compact, flanged design for fitting in tight spaces
- Accurate flow measurement
- Supplied with red and blue test points for upstream and downstream port identification

## MATERIAL SPECIFICATION

| Component                   | Material        | Specification            |             |
|-----------------------------|-----------------|--------------------------|-------------|
|                             |                 | BS EN                    | ASTM        |
| Metering Station            | Stainless Steel | 10088-1 X2CrNiMo 17-12-2 | AISI 316 17 |
| Valve Controlled Test Point | Figure 750      | -                        | -           |



## DIMENSIONAL DRAWINGS



## PRESSURE/TEMPERATURE RATING

PN40 Series A  
34 bar at 180°C  
40 bar from -10 to 120°C  
Note: The Valve Controlled Test Point Figure 750 has a maximum working temperature of 180°C. If other test points are fitted the maximum operating temperature should be obtained from the test point manufacturer.

## TEST PRESSURES

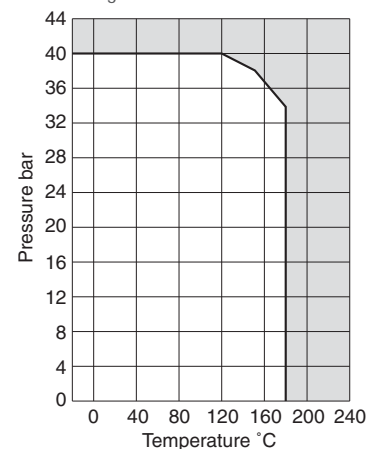
Shell: 60 bar

## SPECIFICATION

Conforms to BS 7350.  
One piece full flange diameter.  
Integral orifice plate.  
Flange dimensions to BS EN 1092-2 PN40.  
Supplied complete with Figure 750 test points.  
Flow charts available.  
Can also be used with Figure 1200 PN40 isolating valve to form an orifice valve (PTV).



Use with Figure 1200DR to make Commissioning Set 5200.



## DIMENSIONS & WEIGHTS

| Nom Size | mm | 15  | 20  | 25  | 32  | 40  | 50  |
|----------|----|-----|-----|-----|-----|-----|-----|
| A        | mm | 18  | 18  | 18  | 18  | 18  | 18  |
| B        | mm | 95  | 100 | 105 | 115 | 120 | 130 |
| C        | mm | 140 | 150 | 160 | 185 | 195 | 210 |
| D        | mm | 95  | 105 | 115 | 140 | 150 | 165 |
| Weight   | kg | 1.4 | 1.6 | 1.8 | 2.5 | 2.9 | 3.5 |

For Commissioning Valve Coefficients please refer to pages 45-47.

Every effort has been made to ensure that the information contained in this publication is accurate at the time of publishing. Hattersley Ltd assumes no responsibility or liability for typographical errors or omissions or for any misinterpretation of the information within the publication and reserves the right to change without notice.

0813\_V3