

Fig. 970 & 970G Fully-lugged Wafer Pattern



FEATURES & BENEFITS

- Ductile Iron Body
- Aluminium Bronze Disc
- Liner bonded to steel backing ring
- High strength, low friction bearings for upper and lower shafts, to restrain shaft deflection and ensure effective stem sealing
- Long neck for insulation
- Maintenance free



MATERIAL SPECIFICATION

| Component | Material | Specification | |
|----------------------|---------------------|--------------------|---------------|
| | | BS EN | ASTM |
| Body | Ductile Iron | 1563 EN-JS 1040 | A536 65-45-12 |
| Shaft | Stainless Steel | 10088-1 X5GNi18-10 | A276 TYPE 410 |
| Disc | Aluminium Bronze | 1982 CC333G | B148-C95300 |
| Bushes (up to 100mm) | PTFE | - | - |
| 125mm and above | Bronze (lubricated) | - | - |
| O-Ring | Buna N | - | - |
| Liner | EPDM | - | - |

PRESSURE/TEMPERATURE RATING

PN16 from -10 up to 130°C

TEST PRESSURES

Hydrostatic
Shell: 24 bar
Seat: 17.6 bar

SPECIFICATION

Conforms to BS EN 593:2009.

Fully-lugged.

Lever or gearbox.

Valves DN250 and larger supplied as standard with fully enclosed gear operator.

Valves may be used for flow regulation.

Fig. 970 and 970G are suitable for Group 2 liquids only as defined by the Pressure Equipment Directive 97/23/EC.

DIMENSIONS & WEIGHTS

Fig. 970

| Nom Size | mm | 50 | 65 | 80 | 100 | 125 | 150 | 200 |
|----------|----|-----|-----|-----|------|------|------|------|
| A | mm | 195 | 207 | 213 | 232 | 245 | 257 | 305 |
| B | mm | 83 | 95 | 102 | 124 | 136 | 150 | 197 |
| C | mm | 44 | 48 | 48 | 54 | 57 | 57 | 63 |
| D | mm | 32 | 32 | 32 | 32 | 32 | 32 | 44 |
| E | mm | 102 | 121 | 130 | 171 | 197 | 219 | 268 |
| F | mm | 260 | 260 | 260 | 260 | 260 | 260 | 356 |
| G | mm | 32 | 46 | 64 | 90 | 111 | 145 | 193 |
| Weight | kg | 4 | 4.5 | 7.2 | 12.6 | 13.5 | 14.9 | 24.1 |

DIMENSIONAL DRAWINGS

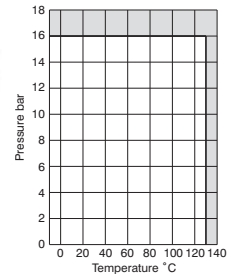
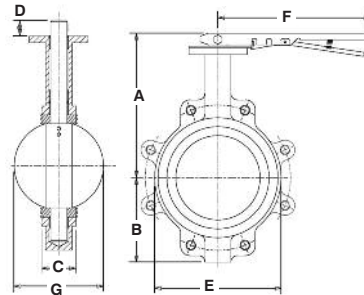


Fig. 970G

| Nom Size | mm | 50 | 65 | 80 | 100 | 125 | 150 | 200 | 250 | 300 | 350 | 400 | 450 | 500 | 600 |
|----------|----|------|-----|------|------|-----|------|------|------|------|------|-------|-------|-------|-------|
| A | mm | 162 | 175 | 181 | 200 | 213 | 225 | 260 | 292 | 337 | 368 | 400 | 422 | 479 | 562 |
| B | mm | 83 | 95 | 102 | 124 | 136 | 150 | 197 | 210 | 248 | 279 | 305 | 381 | 381 | 457 |
| C | mm | 44 | 48 | 48 | 54 | 57 | 57 | 63 | 70 | 79 | 79 | 89 | 108 | 133 | 156 |
| D | mm | 42 | 42 | 42 | 42 | 42 | 40 | 40 | 40 | 40 | 40 | - | - | - | - |
| E | mm | 102 | 121 | 130 | 171 | 197 | 219 | 268 | 332 | 410 | 435 | 508 | 543 | 592 | 708 |
| F | mm | 150 | 150 | 150 | 150 | 300 | 300 | 300 | 300 | 300 | 300 | 450 | 450 | 450 | 450 |
| G | mm | 32 | 46 | 64 | 90 | 111 | 145 | 193 | 241 | 290 | 325 | 380 | 427 | 474 | 574 |
| K | mm | 240 | 240 | 240 | 240 | 240 | 230 | 230 | 230 | 230 | 277 | 277 | 277 | 321 | 335 |
| Weight | kg | 15.5 | 16 | 18.7 | 24.1 | 25 | 26.4 | 36.7 | 47.1 | 62.1 | 84.9 | 123.8 | 139.7 | 215.5 | 337.3 |

