



# Fig. 4970 & 4970G Ductile Iron Fully-lugged

## FEATURES & BENEFITS

- Available up to DN600
- Valve body fully-lugged
- Long neck for insulation
- Maintenance free
- Good control characteristics



## MATERIAL SPECIFICATION

Component	Material	Specification	
		BS EN	ASTM
Body	Ductile Iron	1563 EN-JS1030	A536-65-45-12
Operating Shaft	Stainless Steel	10088-1 X12Cr13	A276 410
Disc	Stainless Steel	110213-4 GX5CrNiMo19-11-2	A351 CF8M
Taper Pins	Stainless Steel	10088-1X5CrNiMo17-12-2	A276 316
Bushes	PTFE	-	-
O-Ring	Buna N	-	-
Liner	EPDM	-	-

## PRESSURE/ TEMPERATURE RATING

16 bar from -10 to 120°C  
15.7 bar at 130°C

## TEST PRESSURES

Shell: 24 bar  
Seat: 17.6 bar

## SPECIFICATION

Generally conforms to BS EN 593:2009.  
Ductile Iron body epoxy coated.  
Fully-lugged.  
Stainless steel disc.  
EPDM liner.  
To suit flange connections BS EN 1092-2 PN16.  
Valves may be used for flow regulation.  
Valves DN250 and larger supplied as standard with fully enclosed gear operator.  
Valves DN450 and larger supplied with spur gear unit as part of gear operator.

## DIMENSIONS & WEIGHTS

Fig. 4970

Nom Size	mm	50	65	80	100	125	150	200
A	mm	195	207	213	232	245	257	305
B	mm	83	95	102	124	136	150	197
C	mm	44	48	48	54	57	57	63
D	mm	32	32	32	32	32	32	44
E	mm	102	121	130	171	197	219	268
F	mm	260	260	260	260	260	260	356
G	mm	32	46	64	90	111	145	193
Weight	kg	4	4.5	7.2	12.6	13.5	14.9	24.1

## DIMENSIONAL DRAWINGS

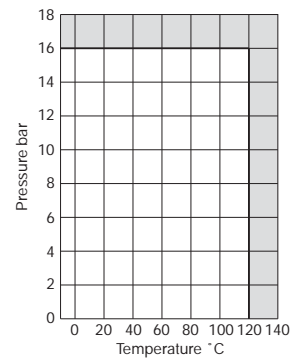
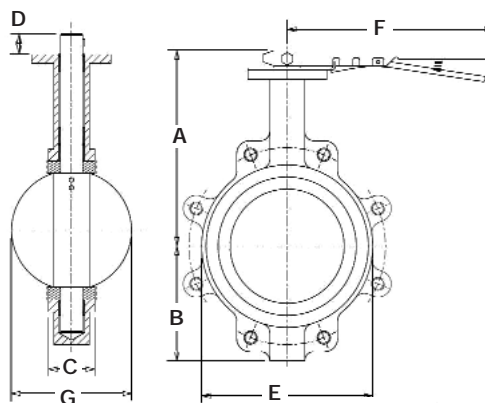
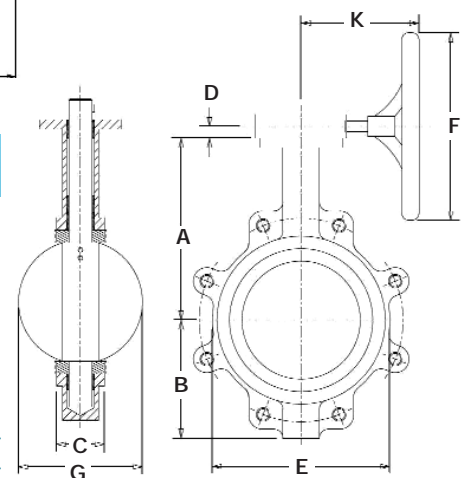


Fig. 4970G

Nom Size	mm	50	65	80	100	125	150	200	250	300	350	400	450	500	600
A	mm	162	175	181	200	213	225	260	292	337	368	400	422	479	562
B	mm	83	95	102	124	136	150	197	210	248	279	305	381	381	457
C	mm	44	48	48	54	57	57	63	70	79	79	89	108	133	156
D	mm	42	42	42	42	42	42	40	40	40	40	-	-	-	-
E	mm	102	121	130	171	197	219	268	332	410	435	508	543	592	708
F	mm	150	150	150	150	300	300	300	300	300	300	450	450	450	450
G	mm	32	46	64	90	111	145	193	241	290	325	380	427	474	574
K	mm	240	240	240	240	240	240	230	230	230	230	277	277	321	335
Weight	kg	15.5	16	18.7	24.1	25	26.4	36.7	47.1	62.1	84.9	123.8	139.7	215.5	337.3



0813\_v3  
Every effort has been made to ensure that the information contained in this publication is accurate at the time of publishing. Hattersley Ltd assumes no responsibility or liability for typographical errors or omissions or for any misinterpretation of the information within the publication and reserves the right to change without notice.