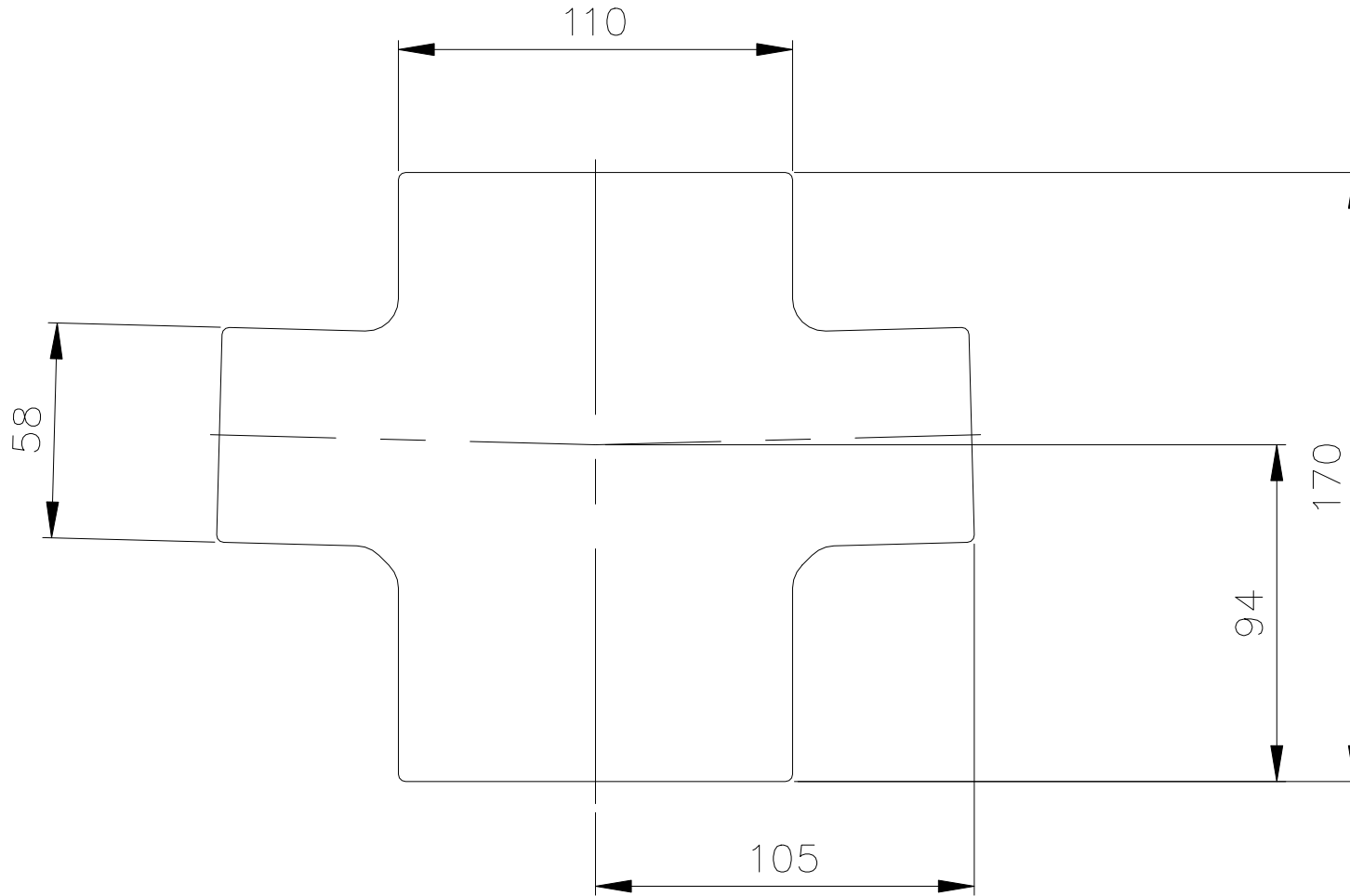


Note: This drawing is intended to illustrate the correct application of Alumasc products only. All other elements are shown indicatively and it is not the intention to detail building construction.

File: 663814.dwg



### HARMER SML SOCKETLESS SOIL AND WASTE SYSTEM



ALUMASC EXTERIOR BUILDING PRODUCTS LTD  
White House Works, Bold Road, Sutton  
St Helens, Merseyside, WA9 4JG, UK  
Telephone: +44 (0)1744 648400  
Facsimile: +44 (0)1744 648401  
Website: [www.alumascdrainage.co.uk](http://www.alumascdrainage.co.uk)  
E-mail: [technical@alumasc-exteriors.co.uk](mailto:technical@alumasc-exteriors.co.uk)

Drawing title:  
**100 x 50 x 50 DOUBLE BRANCH 88.5°**

Detail is valid only when approved by the Architect / Contractor concerned

Drawing No:  
**663814**

Scale:  
**1:2 @ A4**

Revision:  
**A**

Date:  
**AUG 10**

© Copyright reserved