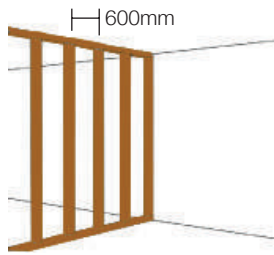
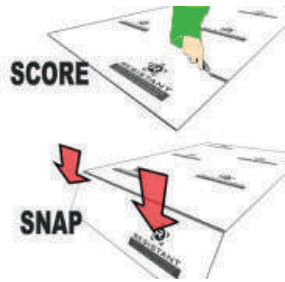


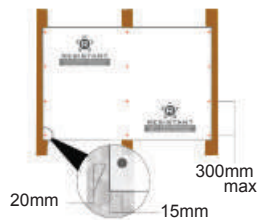
## Installation Guide



1. Vertical studs at 600mm centres.



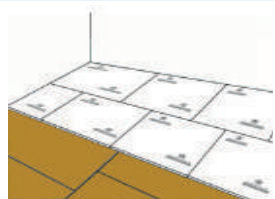
2. 'Score and Snap' to desired size.



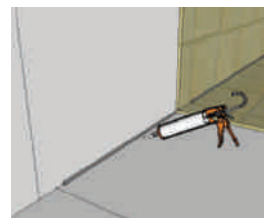
3. 12mm Multi-pro MoistSure for walls. Space fixings minimum 20mm from bottom & 15mm from side at 300mm intervals. Ensure screws are countersunk.



4. Offset boards when fixing. Four corners should never meet. The tiling side (coarse side) is marked on all boards.



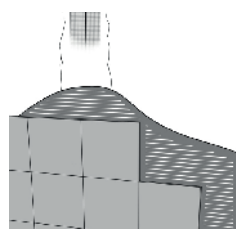
5. Check the subfloor is free from debris and completely flat. Minor differences in levels can be evened out by spreading a thin layer of tile adhesive on to the subfloor. Fix the 6mm Multi-Pro MoistSure board to the floor at 200mm fixing centres using countersunk screws.



6. Run a bead of silicone along the internal joints before tiling and then again after the tiles are fitted - this is standard fitting procedure. (Tanking is required for tiling wet rooms and swimming pools).



7. Bed scrim cloth over all joints (both walls & floors) using the tile adhesive to provide extra reinforcement.



8. Some adhesives may require a primer to be applied prior to tile adhesive (refer to manufacturers guidelines). Allow bedding adhesive over scrim cloth to dry before applying tile adhesive and tiles.

## SALES TEAM

UK SALES MANAGER

Martin Braithwaite  
+44 (0) 77 2073 6757  
martin@resistant.co.uk

SOUTH ENGLAND

John Malone  
+44 (0) 77 0271 5265  
john@resistant.co.uk

CENTRAL ENGLAND

Karla Nicholls  
+44 (0) 78 7917 1948  
karla@resistant.co.uk

SOUTHERN IRELAND

Declan Donnelly  
087 9326632  
tradewoodandco@gmail.com

NORTHERN IRELAND

Laura Peel  
+44 (0) 28 9074 9400  
laura@resistant.co.uk

TECHNICAL SUPPORT

Aislinn McGinn  
+44 (0) 28 9074 9400  
aislinn@resistant.co.uk

### HEAD OFFICE SALES, & INFORMATION

M2 Business Park  
122-126 Duncrue Street  
Belfast  
N.Ireland  
BT3 9AR

T: +44 (0) 28 9074 9400  
F: +44 (0) 28 9074 9420  
E: sales@resistant.co.uk



### DISTRIBUTOR INFORMATION

For an in depth fixing guide visit

[WWW.RESISTANT.CO.UK](http://WWW.RESISTANT.CO.UK)

[WWW.RESISTANT.CO.UK](http://WWW.RESISTANT.CO.UK)

[WWW.RESISTANT.CO.UK](http://WWW.RESISTANT.CO.UK)



RESISTANT  
BUILDING PRODUCTS LTD

**multi-pro**  
**MoistSure**  
**Tile Backer Board**

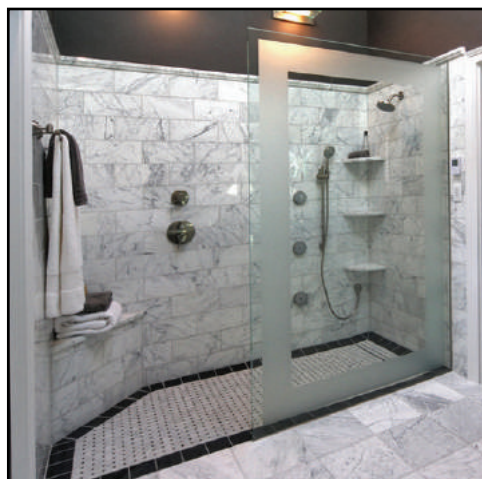
**THE**  
**STRONGER - FASTER - SAFER**  
BUILDING BOARD FOR WALL AND FLOOR TILING

## What is Multi-Pro MoistSure?

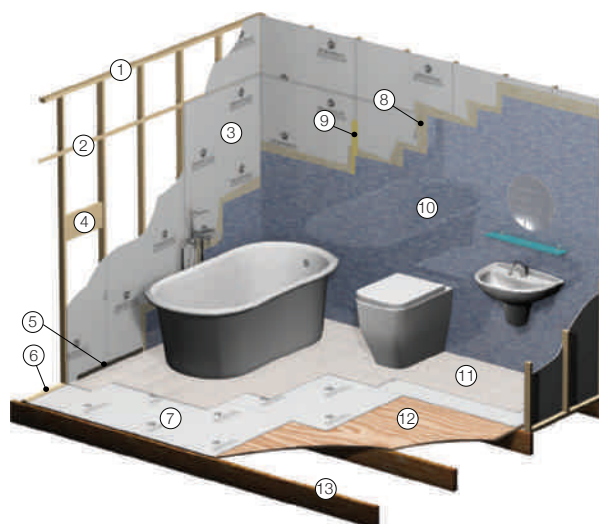
Multi-Pro MoistSure is a water resistant tile backer board that will not swell, rot or degrade over time. Multi-Pro MoistSure can accept a number of finishes including wall and floor tiles. It is ideal for bathrooms, wetrooms, swimming pools and kitchens.

Available Board Sizes	Weight per board
6 x 1195 x 590mm	4.4kg
6 x 1220 x 1200mm	9.2kg
12 x 1200 x 800mm	12.0kg
6 x 1200 x 2400mm	18.0kg
12 x 1200 x 2400mm	36.0kg

### Shower Room



## Bathroom Detail



1. Top Rail
2. Timber Stud
3. 12mm MoistSure
4. Support for Fixture Attachment
5. Gap filling silicone bead and optional tanking (see installation guide)
6. Bottom Rail
7. 6mm MoistSure
8. Tile Adhesive
9. Joint Filler / Scrim Cloth
10. Wall Tiles
11. Floor Tiles
12. Minimum 18mm Subfloor
13. Floor Joist

### Multi-Pro MoistSure vs Industry Standard

Gypsum and Plywood products are frequently used as a tiling substrate in showers and bathrooms where stud walls are common. Both these substrates are susceptible to deterioration if moisture penetrates through a crack or joint on a tiled wall or floor. When MoistSure is used and installed as per the recommended guidelines, these problems should not occur.

## Superior Attributes



### Moisture & Water Resistant

MoistSure will not physically deteriorate when subjected to water or moisture.



### Mould Resistant

Unlike paper faced/wood based products, MoistSure contains no cellulose thus resilient to mould growth.



### Breathability

Ensures a healthy, durable working building with a natural ability to absorb and release moisture.



### Fire Rated, Non-Flammable, Non-Combustible.

Non-Combustible to BS 476 Part 4 BS EN ISO 1182 - Euro Class A1.



### Ease Of Application

Simple to prepare and attach. The board surface accepts a number of finishes.



### Impact Resistant

An ability to withstand abuse, including surface impact.

**Multi-Pro MoistSure tile backer board has proven in testing to be extremely strong and when fitted correctly is suitable for hanging a combined weight of tiles and adhesive up to 100kg/m<sup>2</sup>.**

**Some rival tile backers contain up to 50% crystalline silica. Airborne dust created by mechanically cutting tile backers with high % contents of crystalline silica is extremely hazardous to health and should always be avoided and never carried out within your home. Multi-Pro MoistSure contains less than 0.5% crystalline silica and is so easy to score and snap that no mechanical cutting is ever required.**

**Many other tile backer boards are very difficult to score and snap and require up to 6 scores on each straight edge with a specialist cutting tool before the board can be snapped to size. Multi-Pro MoistSure is easily scored and snapped with a standard cutting blade resulting in fitting savings of time and money.**

Watch the full video at [www.resistant.co.uk](http://www.resistant.co.uk)

**Multi-Pro MoistSure has been Tested & Approved by leading Tile adhesive suppliers**

FOR MORE INFORMATION & TESTS COMPLETED VISIT  
**WWW.RESISTANT.CO.UK**