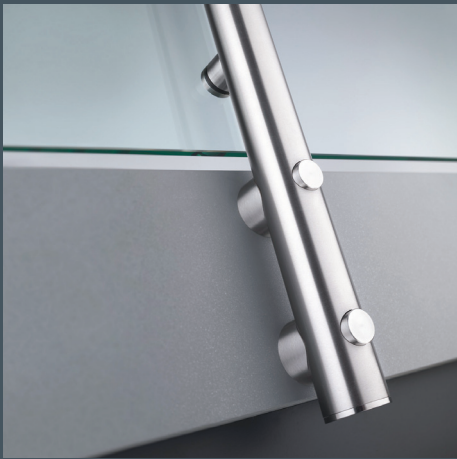


TUBE



CUBE



EDGE



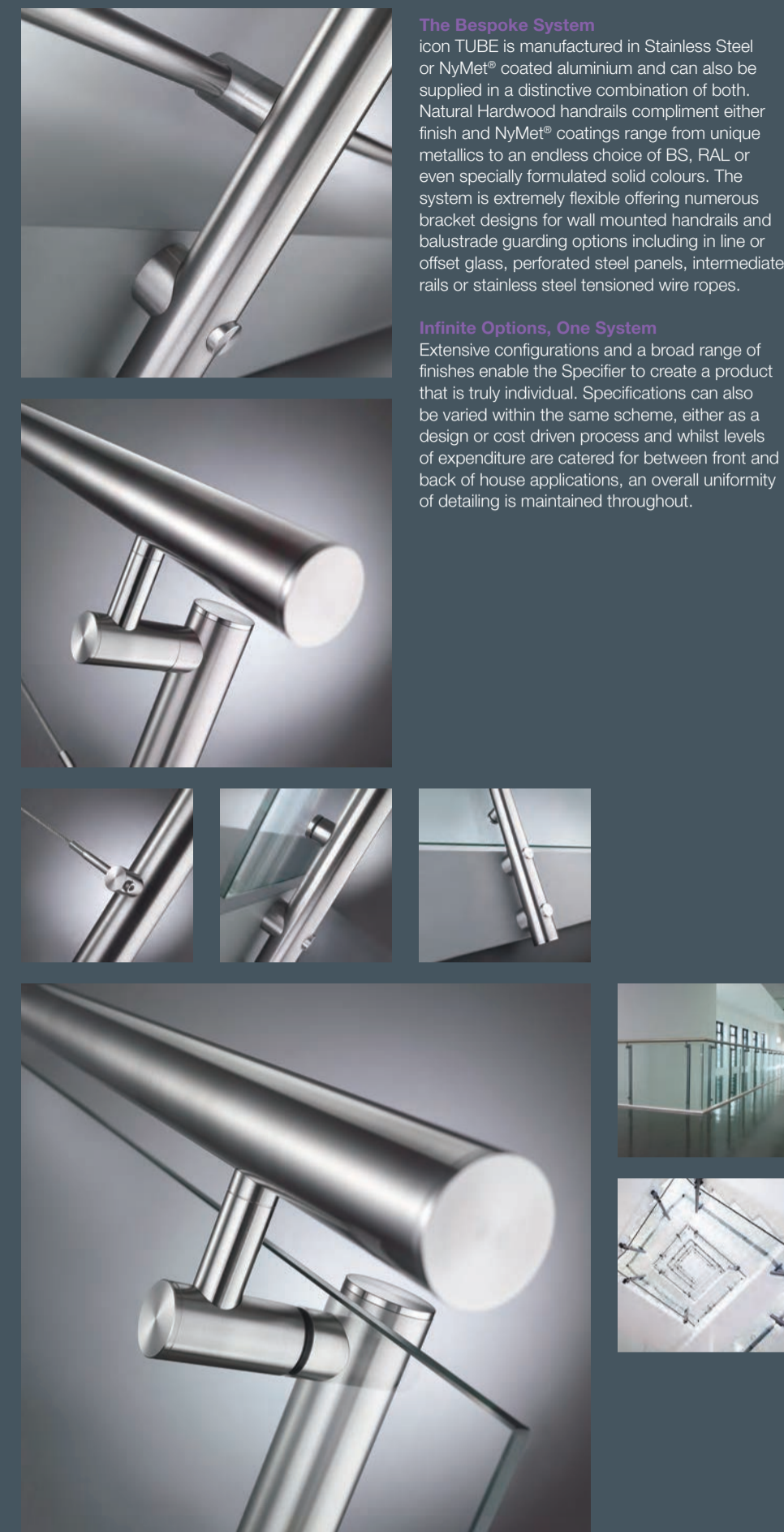
VIEU



Handrail

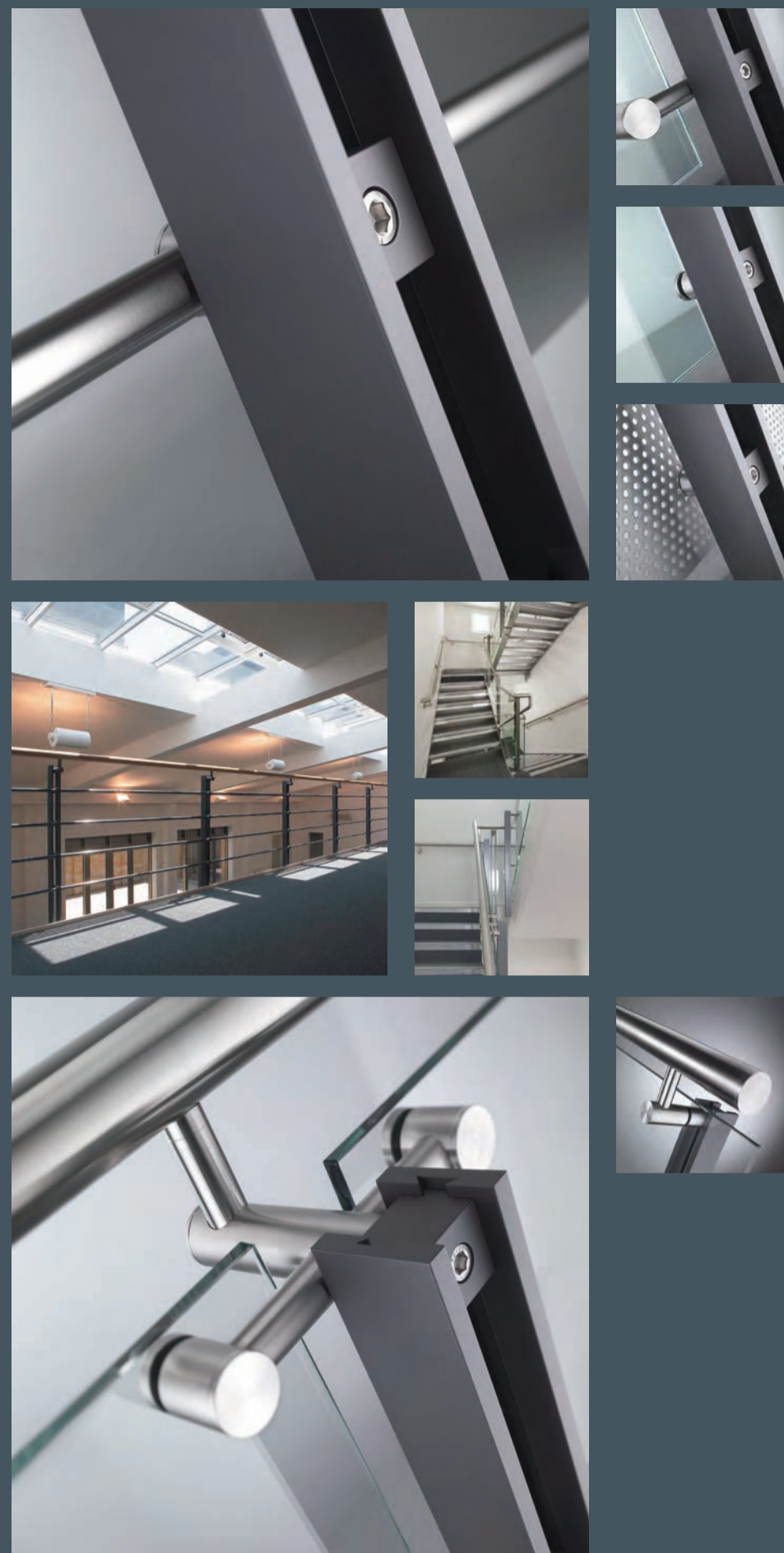
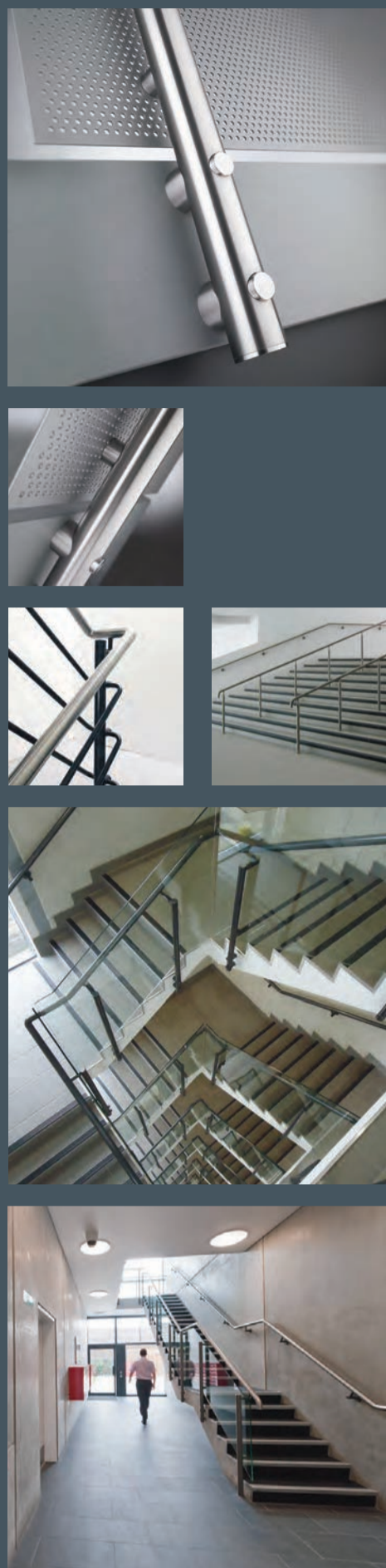


LedLit



The Bespoke System
icon TUBE is manufactured in Stainless Steel or NyMet® coated aluminium and can also be supplied in a distinctive combination of both. Natural Hardwood handrails complement either finish and NyMet® coatings range from unique metallics to an endless choice of BS, RAL, or even specially formulated solid colours. The system is extremely flexible offering numerous bracket designs for wall mounted handrails and balustrade guarding options including in-line or offset glass, perforated steel panels, intermediate rails or stainless steel tensioned wire ropes.

Infinite Options, One System
Extensive configurations and a broad range of finishes enable the Specifier to create a product that is truly individual. Specifications can also be varied within the same scheme, either as a design or cost driven process and whilst levels of expenditure are catered for between front and back of house applications, an overall uniformity of detailing is maintained throughout.



Intelligent Adjustable Modular System
CUBE is the distinctive member of the icon modular handrail and balustrade product range. The system is derived from the desire to specify an alternative to tubular balusters whilst adhering to the strict philosophy of highly engineered, non-fabricated solutions. The design concept was conceived by pairing extruded aluminium flat bar uprights and bracing these together by means of unique CUBE components that interlock inside rebates within the inner faces of each baluster section.

The CUBE
CUBES have the ability to slide vertically between the twin flats and therefore become anchor points for a variety of component connections, whether this be the handrail, infill panel, intermediate rails or structural fixings to the fabric of the building. Interesting and unusual transitions are created between tubular elements projecting from within the uprights without any welding or bolted connection through the flats. The modular rationale promotes a series of standard parts which adjust to any angle and perform multiple functions throughout the system.



LedLit Handrails Across the icon Range
The rapid development of LED lighting has allowed artificial illumination to be incorporated into many different building components in new and unusual ways. For some time, handrails has been cited as an obvious future in which to embrace the new technology, although few products have entered the market with convincing calibre and expertise. icon LedLit represents the first high-end solution offering unparalleled IN/TA LEDs integrated into our Architecturally renowned icon handrail and balustrade systems.

Modular LED Light Lines
The housing of the LED units has been meticulously designed to be ergonomically part of the icon handrail and INSTA's ground breaking technology pushes the boundaries of lux levels and energy efficiency to create a virtually maintenance-free alternative to common light sources.

- Applications**
- Feature staircases
 - Atriums and walkways
 - Entrances, lobbies, ramps and steps
 - Public realm
 - Bridges
 - Airports, train & bus stations
 - Stacks

- Features and Benefits of LED Lighting**
- Low maintenance
 - Reliability and long service
 - Energy efficiency
 - Compact fittings discreetly housed within handrail
 - Cool or warm white variants
 - RGB colours available
 - Dimmable
 - Special effects, colours and dynamic accentuation

Benchmark for Capital Projects
Whilst Handrail Design's pioneering products have been installed in countless projects throughout the UK it is our capital city which has truly embraced icon having become the industry's benchmark for high quality London specifications.

25 year Guarantee
Leading Developers, Architects and principal Main Contractors choose icon for price, product and programme reassurance with the added security of our unique 25 year guarantee.

Commercial

1. Coleman Street EC2R
2. 5 Broadgate EC2M
3. 70 Mark Lane EC3R
4. 85 Queen Victoria Street EC4V
5. Abgate Tower E1
6. Harbour Exchange E14
7. GlaxoSmithKline TW6
8. 1 London Wall E2

Mixed Use

9. Central St Giles WC2H
10. One Eagle Place W1J

Residential

11. Fitzroy Place W1T
12. Adelaide Wharf E2

Handrail Design Limited
Silt & Colour Loft, Historic Dockyard Chatham Kent ME4 4TE
Tel: +44 (0)1634 817800 Fax: +44 (0)1634 817711
E-mail: info@handraildesign.co.uk
www.handraildesign.co.uk

© 2014 Handrail Design Limited



Environmental Sustainable System
icon EDGE is the latest member of the icon modular handrail and balustrade product range. As with icon CUBE, the system is derived from the desire to specify an alternative to tubular balusters whilst adhering to the strict philosophy of highly engineered, non-fabricated solutions. A single flat bar upright is so subtle, at a distance it virtually disappears from view.

EDGE
Slotted barrels have the ability to slide vertically up and down the flat bar upright and therefore become anchor points for a variety of component connections, whether this be the handrail, infill panel, intermediate rails or structural fixings to the fabric of the building. Architecturally desirable transitions are created between the rectangular flat bar uprights passing through the tubular elements without any welding or bolted connection.

The modular rationale promotes a series of standard parts which adjust to any angle and perform multiple functions throughout the system.



The Difference is Clear
Architects and Specifiers have gained access to invaluable expertise in glass engineering through the introduction of our pioneering Architectural handrail and balustrade system. icon VIEU is an intelligent system solution for structural glass balustrading based on a modular range of handrails and associated fittings. In a complex and predominantly bespoke marketplace, icon VIEU offers logical predetermined specifications for high end structural glass requirements.

Technical Performance
icon VIEU has been developed in accordance with the design criteria specified in BS6180:2011 and side loading requirements for all building use categories can be accommodated including the 3kN/m horizontal UDL, designated for areas susceptible to overcrowding. Internal and external specifications are available as the Stainless Steel fittings can be supplied in 1.4301 (304) and 1.4401 (316) grade variants. Curved configurations can be considered and special adaptations of the system are often incorporated to suit the individual needs or preferences of each project.

Glass Specification
12,15,19 or 25 thick monolithic toughened glass or laminated structural equivalents, each panel Kite Mark badged in bottom left hand corner to EN 12150 TC1 with square cut or nominal radiussed corners, fat rimmed and polished edges all round.



Wall Mounted Handrail System
icon Handrail is available with a range of finishes and materials to complement TUBE, CUBE, EDGE and VIEU balustrade schemes or as a stand alone product to be wall mounted within staircases or along ramps and corridors.

Handrail Ends, Bends
Handrails and balustrade top rails typically have capped or returned ends, changes in direction are achieved with formed or cast bonds and mitres are generally used if Hardwood is specified. For structural purposes a steel core rail is rebated into Hardwood balustrade top rails.

Rope
We have married our products with the heritage and ongoing traditional manufacture of rope from the Master Rope-makers based on the same site as Handrail Design in the Historic Dockyard. The rope making process originated more than 400 years ago and still uses the 1/4 mile long rope walk and machinery from the Victorian era. The Ropery building, when erected in 1875, was the longest building in Europe.

NyMet® Coating
Aluminium components are factory finished in our unique NyMet® nylon coating. NyMet® comprises a three coat system of electrostatically applied Polymer offering a 150 micron finish which has twice the thickness and 10 times the resistance to abrasion of a typical polyester powder coating.

Stainless Steel
Stainless Steel handrails and associated icon fittings are produced in 1.4301 (304) grade for internal use and 1.4401 (316) grade for coastal external applications. A refined, brushed satin finish is directionally applied to most components whereas tubes are radially polished.

Natural Hardwoods
icon offers a contemporary selection of factory polished and lacquered Hardwood handrails as standard. Other species can be considered upon request and all Hardwoods used for icon handrails are supplied from sustainably managed sources.

N Platinum	H Walnut
N Cadmium	H Beech
N Tungsten	H Maple
N Gun Metal	H Cherry
N Black	H Ash
N Vanadium	H Oak
N Titanium	N BS or RAL
N Osmium	S Satin Stainless Steel

TUBE

CUBE

EDGE

VIEU

Handrail

LedLit

Architectural Handrail & Balustrade

Unequaled & Approved



NN.4B.5A.6B.CG

Tungsten NyMet® coated top rail connected in line to side fixed uprights at maximum 1200mm centres with in line holders supporting 10mm toughened clear glass infill panels with nominal radiused corners and edges polished all round.

The Bespoke System
icon TUBE is available in Stainless Steel or NyMet® coated aluminium and can also be supplied in a combination of both. Natural Hardwood handrails compliment either finish and NyMet® coatings range from unique metallics to an endless choice of BS, RAL or even specially formulated solid colours. The system is extremely flexible offering numerous bracket designs for wall mounted handrails. Balustrade options include in line or offset glass, perforated steel panels, intermediate rails or stainless steel tensioned wire ropes.

In Line Panels
The industry standard way of bolting perforated panels in line with the top rail is to clamp the panels between the uprights with four patch fittings. Unlike other proprietary clips, icon 5A panel holders do not have bolt heads on show as all connections are concealed behind cover discs for a more desirable Architectural solution.



SN.4B.5F.6B.ST4

Satin Polished Stainless Steel top rail connected in line to Gun Metal NyMet® coated side fixed uprights at maximum 1200mm centres with in line Stainless Steel tensioned wire rope infill and fittings.

Tension Wires
Tension wires provide an elegant means of guarding when a classic, nautical design is desired and particularly appropriate for commercial or external environments. All icon balustrades are supplied with Swiss made Jakob® INOX LINE stainless steel ropes and fittings as standard.

In Line Wires
The most popular design is for the tension wires to run in line with the handrail and between the uprights. The number of wires can be varied from a single rope or multiple ropes depending on the preference, their diameters are 4mm and their intersections with uprights are performed mechanically to offer a more desirable Architectural alternative to welding.

Jakob® INOX LINE



NN.4B.5A.6B.PC6

Tungsten NyMet® coated top rail connected in line to side fixed uprights at maximum 1200mm centres with in line holders supporting 3mm thick NyMet® Coated Mild Steel perforated infill panels.

In Line Panels
The industry standard way of bolting perforated panels in line with the top rail is to clamp them between the uprights with four patch fittings. Unlike other proprietary clips, 5A panel holders do not have bolt heads on show as all connections are concealed behind cover discs for a more desirable Architectural solution. Perforations can be supplied in either 6mm or 34mm diameter hole sizes.



HN.4F.5D.6A.X4

Polished Beech Hardwood top rail connected with in line stems to White NyMet® coated spigot fixed uprights at maximum 1200mm centres with 4 x 22mm diameter in line midrails.

In Line Midrails
The most popular design is for the intermediate rails to run in line with the handrail and between the uprights. The number of rails can be varied from none at all, to a single rail or multiple rails depending on the preference. Diameters are available in 50mm and 22mm and their intersections with uprights are performed mechanically to offer a more desirable Architectural alternative to welding.



SS.4H.5C.6B.CG

Satin Polished Stainless Steel top rail connected with offset stems to Stainless Steel side fixed uprights at maximum 1200mm centres with single offset panel holders supporting 10mm toughened clear glass.

Offset Panels
icon offers an alternative method of connecting glass panels by offsetting them from the uprights. The glass is attached in a unique way through the handrail bracket to give a much cleaner design allowing large panels to be cantilevered with structurally dynamic results.



HS.4G.5G.6E.ST4

Polished Maple Hardwood top rail connected with offset stems to Satin Polished Stainless Steel side fixed uprights at maximum 1200mm centres with offset Stainless Steel tensioned wire rope infill and fittings.

Tension Wires
Tension wires provide an elegant means of guarding when a classic, nautical design is desired and particularly appropriate for commercial or external environments. All icon balustrades are supplied with Swiss made Jakob® INOX LINE stainless steel ropes and fittings as standard.

Offset Wires
A technically attractive method of providing tensioned infill wires is to offset them from the uprights with engineered components making more of an Architectural statement. In this instance it is typical for the handrail to also be offset for design consistency. The number of wires can be varied from a single rope or multiple ropes depending on the preference, their diameters are 4mm and their intersections with uprights are performed mechanically to offer a more desirable Architectural alternative to welding.

Jakob® INOX LINE



SS.4H.5C.6B.PC6

Satin Polished Stainless Steel top rail connected with offset stems to Stainless Steel side fixed uprights at maximum 1200mm centres with single offset panel holders supporting 3mm thick NyMet® Coated Mild Steel infill panels.

Perforated Panels
Often mistakenly specified as a cheaper alternative to glass, 3mm thick perforated mild steel infill panels are produced to order for each project and typically drilled to suit the panel holder type. The four corners radiused and either NyMet® or Polyester Powder coated.

Offset Panels
icon offers an alternative method of connecting perforated panels by offsetting them from the uprights. The infill is attached in a unique way through the handrail bracket to give a much cleaner design allowing large panels to be cantilevered with dramatic results. For offset panels, perforations are supplied with 6mm diameter holes.



SN.4G.5E.6B.X4

Satin Polished Stainless Steel top rail connected with offset stems to Cadmium NyMet® coated side fixed uprights at maximum 1200mm centres with 4 x 22mm diameter offset midrails.

Midrails
Midrails provide an effective means of guarding when a traditional open appearance is preferred and particularly appropriate for commercial or external environments.

Offset Midrails
A technically attractive means of providing infill rails is to offset them from the uprights with engineered components making more of an Architectural statement. In this instance it is typical for the handrail to also be offset and the midrail diameter of 22mm matches that of the stem brackets for design consistency.



SN.4H.5C.6G.CG

Satin Polished Stainless Steel top rail connected with offset stems to Gun Metal NyMet® coated in fixed twin flat uprights at max 1400mm centres with offset panel holders supporting 10mm thick toughened glass.

Offset Panels
icon CUBE offers an alternative method of connecting glass panels by offsetting them from the uprights. The glass is attached in a unique way through the handrail bracket to give a much cleaner design allowing large panels to be cantilevered with structurally dynamic results.



SN.4L.5H.6E.CG

Satin Polished Stainless Steel top rail connected with offset stems to Cadmium NyMet® coated side fixed twin flat uprights at maximum 1400mm centres with double offset panel holders supporting 10mm toughened clear glass.

Glass Panels
The most popular and surprisingly affordable choice for balustrade infill panels, 10mm thick clear or screen printed toughened glass is produced to order for each project and typically drilled to suit the panel holder type, the four corners radiused and all edges polished in accordance with EN 12150 1C1.



SN.4H.5C.6G.PC6

Satin Polished Stainless Steel top rail connected with offset stems to Gun Metal NyMet® coated in fixed twin flat uprights at maximum 1400mm centres with offset panel holders supporting 3mm thick NyMet® coated Mild Steel infill panels.

Perforated Panels
Often mistakenly specified as a cheaper alternative to glass, 3mm thick perforated mild steel infill panels are produced to order for each project and typically drilled to suit the panel holder type, the four corners radiused and either NyMet® or Polyester Powder coated.

Offset Panels
icon CUBE offers an alternative method of connecting perforated panels by offsetting them from the uprights. The infill is attached in a unique way through the handrail bracket to give a much cleaner design allowing large panels to be cantilevered with dramatic results. Perforations are supplied with 6mm diameter holes.



SN.4G.5E.6G.X4

Satin Polished Stainless Steel top rail connected with offset stems to Tungsten NyMet® coated in side fixed twin flat uprights at maximum 1400mm centres with 4 x 22mm diameter offset midrails.

Midrails
Midrails provide an effective means of guarding when a traditional open appearance is preferred and particularly appropriate for commercial or external environments.

Offset Midrails
icon CUBE offers a technically attractive means of providing infill rails by offsetting them from the uprights with engineered components making a more Architectural statement. The handrail is also offset and the midrail diameter of 22mm matches that of the stem brackets for design consistency.



SS.4H.5C.6E.CG

Satin Polished Stainless Steel top rail connected with offset stem brackets to 2-point side fixed satin polished 60x12mm flat bar stainless steel uprights at maximum 1200mm centres with offset panel holders supporting 10mm thick toughened glass panels with nominal radiused corners and all edges polished to EN 12150 1C1.

Glass Panels
The most popular and surprisingly affordable choice for balustrade infill panels, 10mm thick clear or screen printed toughened glass is produced to order for each project and typically drilled to suit the panel holder type, the four corners radiused and all edges polished in accordance with EN 12150 1C1.

Offset Panels
icon EDGE offers an alternative method of connecting glass panels by offsetting them from the uprights. The glass is attached in a unique way through the handrail bracket to give a much cleaner design allowing large panels to be cantilevered with structurally dynamic results.



SS.4G.5E.6E.X4

Satin Polished Stainless Steel top rail connected with offset stem brackets to 2-point side fixed Satin Polished 60x12mm flat bar Stainless Steel uprights at maximum 1200mm centres with 4 x Ø22mm dia offset midrails.

Midrails
Midrails provide an effective means of guarding when a traditional open appearance is preferred and particularly appropriate for commercial or external environments.

Offset Midrails
icon EDGE offers a technically attractive means of providing infill rails by offsetting them from the uprights with engineered components making a more Architectural statement. The handrail is also offset and the midrail diameter of 22mm matches that of the stem brackets for design consistency.



S.4A.6D.CG.15

Satin Polished Stainless Steel 50mm diameter top rail connected in line to 15mm toughened clear structural glass panels, flat arised and all exposed edges polished, special track side fixed.

In Line Toprail
In Line Circular and Elliptical handrails or minimalist coping rails are rebated and fitted directly to the top edge of the glass panels providing support where required. Should no handrail or coping rail be preferred then laminated glass panels need to be specified such that in the event of a panel failure, edge protection remains in place.

Track Fixing
icon VIEU caters for the conventional need to contain and chemically set structural glass balustrades within stainless steel or polyester powder coated mild steel tracks and staircase stringers. It is also possible to supply extruded aluminium tracks which facilitate a dry fitting of the glass panels and have gaps finished with a neat gasket compared to the usual mastic pointing. This advanced method provides the added benefit of enabling glass panels to be easily removed and refitted if required.



S.4G.6B.CG.15

Satin Polished Stainless Steel top rail with offset stem brackets bolted to 15mm toughened clear structural glass panels with flat arised and polished edges all round, 2-point side fixed at appropriate centres with Satin Polished Stainless Steel bosses.

Offset Toprail
icon Boss Fixing is not only an elegantly engineered detail but a far simplified structural connection compared to the conventional method of containing glass within continuous steel tracks. The 2-point side fixings neatly resolve most interface issues, offer a more commercially attractive solution and facilitate ease of panel replacement without disturbing the surrounding finishes. Boss projections can be varied whilst vertical and horizontal centres are specified for each project.

icon in London

Benchmark for Capital Projects

Whilst Handrail Design's pioneering products have been installed in countless projects throughout the UK it is our capital city which has truly embraced icon having become the Industry's benchmark for high quality London specifications.

25 year Guarantee

Leading Developers, Architects and principal Main Contractors choose icon for price, product and programme reassurance with the added security of our unique 25 year guarantee.

Commercial

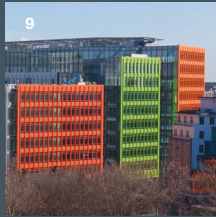
1. 1 Coleman Street EC2R
2. 5 Broadgate EC2M
3. 70 Mark Lane EC3R
4. 95 Queen Victoria Street EC4V
5. Aldgate Tower E1
6. Harbour Exchange E14
7. GlaxoSmithKline TW8
8. 1 London Wall E2

Mixed Use

9. Central St Giles WC2H
10. One Eagle Place W1J

Residential

11. Fitzroy Place W1T
12. Adelaide Wharf E2



Handrail Design Limited

Sail & Colour Loft Historic Dockyard Chatham Kent ME4 4TE

Tel: +44 (0)1634 817800 Fax: +44 (0)1634 817711

E-mail: info@handraildesign.co.uk

www.handraildesign.co.uk

