

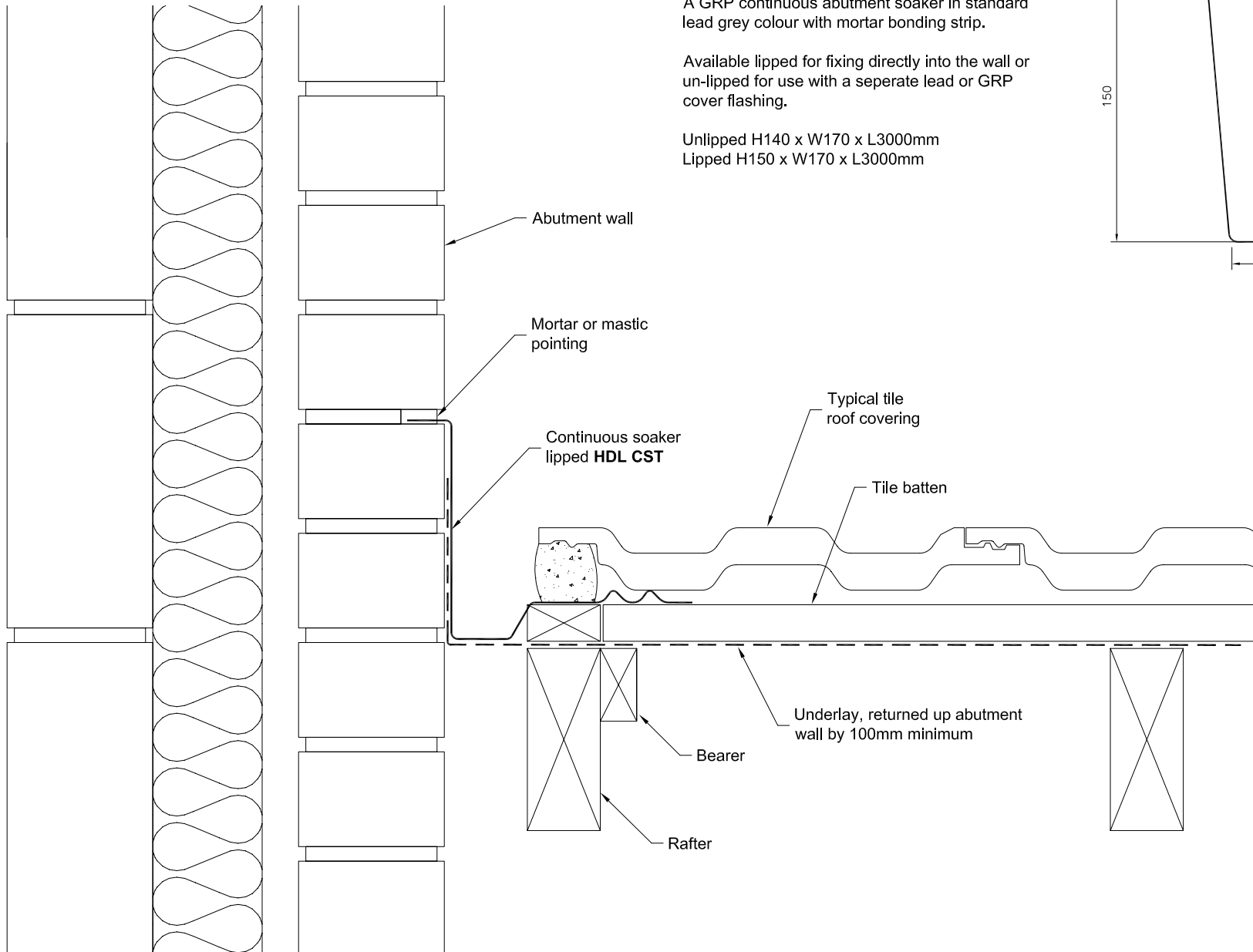
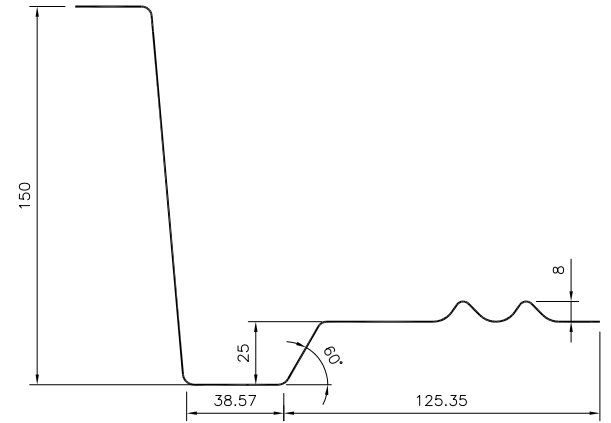
HDL CST

A GRP continuous abutment soaker in standard lead grey colour with mortar bonding strip.

Available lipped for fixing directly into the wall or un-lipped for use with a separate lead or GRP cover flashing.

Unlipped H140 x W170 x L3000mm

Lipped H150 x W170 x L3000mm



CLIENT

PROJECT

SCALE 1:4 @ A4 DATE 08.05.2013

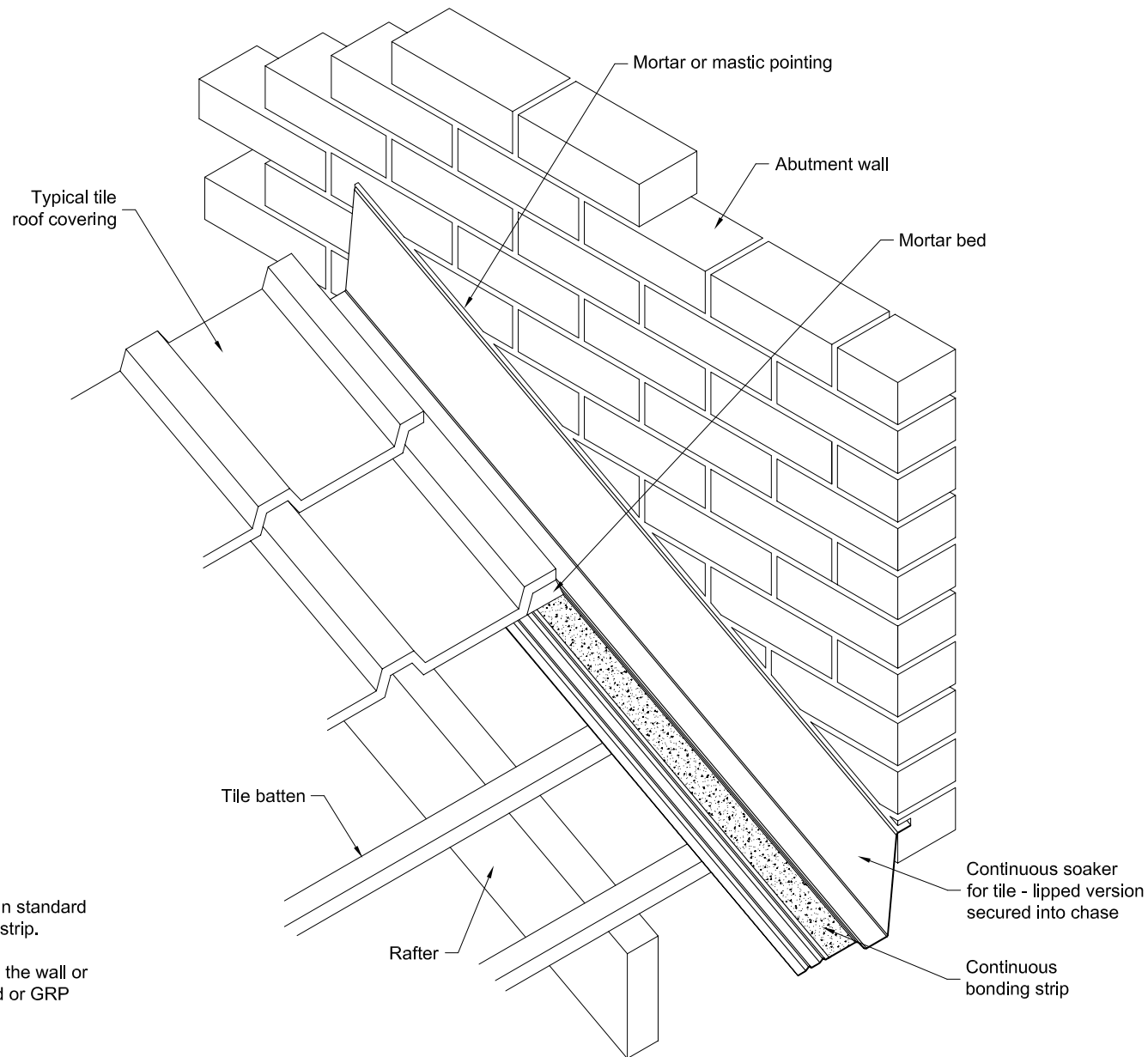
DRAWING TITLE
Continuous Soaker for tiles
Lipped

DRAWING NUMBER
HDL CST-L-1

Hambleside Danelaw Ltd

T 01327 701900
F 01327 701909
W www.hambleside-danelaw.co.uk
A Long March, Daventry, NN11 4NR





HDL CST

A GRP continuous abutment soaker in standard lead grey colour with mortar bonding strip.

Available lipped for fixing directly into the wall or un-lipped for use with a separate lead or GRP cover flashing.

Unlipped H140 x W170 x L3000mm
Lipped H150 x W170 x L3000mm

CLIENT	
PROJECT	
SCALE NTS	DATE 08.05.2013
DRAWING TITLE Continuous Soaker for Tiles Lipped	
DRAWING NUMBER HDL CST-L-2	
HambleSide Danelaw Ltd	
T	01327 701900
F	01327 701909
W	www.hambleSide-danelaw.co.uk
A	Long March, Daventry, NN11 4NR

