



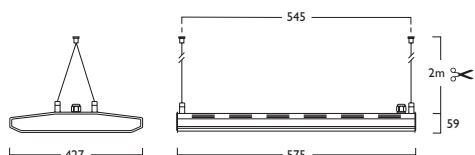
PIR version shown

## Vertigo® Quad Highbay

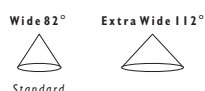
LED  
 141W LED 483 LED 141 + 461

LED & PIR  
 141W LED 486 LED 141 + 461

PIR versions not suitable for use with Gear Types J and K



230V 50Hz IP20 545mm 6.6 kg Ta 45°C



- Available in a choice of lumen outputs delivering up to 21,440 lumens
- Efficacies up to 116 lm/W
- Wide beam refractor (82°) as standard, ideally suited to Warehouse and Superstore applications
- Optional Extra Wide beam refractor (112°) for general illumination
- Suitable for ambient temperatures up to 45°C
- Life expectancy in excess of 60,000 hours (L70 B10) at 25°C ambient and 49,000 hours (L70 B10) at 45°C ambient
- Colour stability within 3 MacAdams
- The PIR Detector defaults can be modified with the use of the Hand Held Controller or Programmer (contact our Lighting Design Department for advice)
- Versatile installation solutions include Suspended, Surface, Trunking and Gripple. (Gripple and Trunking not supplied with fixings)
- Suspension versions supplied with 2 x 2m Suspensions and chrome clutches as standard
- IK08 Compliant

PN Pendant GR Gripple SM Surface TM Trunking

NB: Gripple and Trunking versions not supplied with fixings, Gripple versions can be used for chain mounting

**Gear types F & G must be operated through a DSI**

- A Integral Driver
- E Emergency
- F Digital Dim
- G Digital Dim + Emergency
- J Switch Dim
- K Switch Dim + Emergency
- S DALI Dim
- T DALI Dim + Emergency
- C DALI Dim + DALI Emergency

3 Warm (3000K) 4 Neutral (4000K)

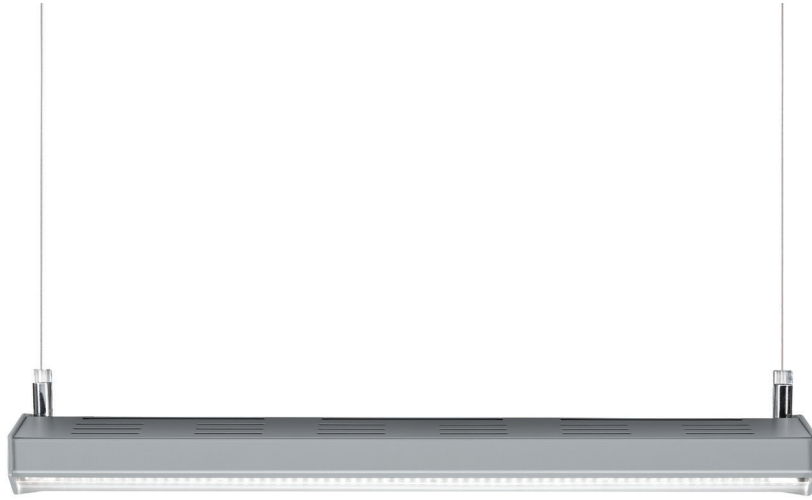
1 White (RAL 9010) 2 Urban Graphite (RAL 7046) 3 Black (RAL 9005)

Refractor Option

544 4x Extra Wide Beam 464

144 2x 5m Twin Suspensions (Wires only)

Tel: (0191) 280 9911 Email: [technical@hacel.co.uk](mailto:technical@hacel.co.uk) Web: [www.hacel.co.uk](http://www.hacel.co.uk)

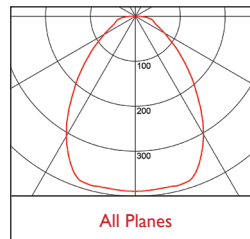


Quad 575 x 427 x 59mm

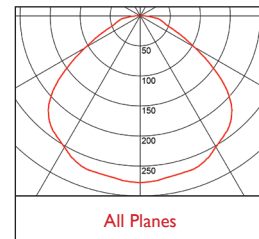
## Vertigo® Quad Highbay

<b>3 Warm White LED (3000K)</b>	<b>CRI 80 141W</b>
Lumen Output	20560 lm
LOR	0.80
CRI	80
Total Power	147.8W
Power Factor	0.99
Running Current	0.65A
Inrush Current	115.4A (217us)
Efficacy	111 lm/W
Emergency Output (BLF)	514 lm (2.5%)
<b>4 Neutral White LED (4000K)</b>	<b>CRI 80 141W</b>
Lumen Output	21440 lm
LOR	0.80
CRI	80
Total Power	147.8W
Power Factor	0.99
Running Current	0.65A
Inrush Current	115.4A (217us)
Efficacy	116 lm/W
Emergency Output (BLF)	536 lm (2.5%)

### Photometrics



**461 DLOR: 0.80**



**464 DLOR: 0.80**

*Suspensions and Mounting details shown over*

# Vertigo® Quad Highbay Suspensions & Mounting

## Fixing Types

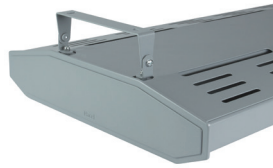
**PN** Pendant



**GR** Gripple



**SM** Surface



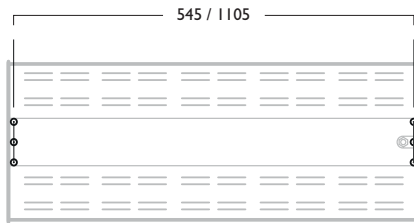
**TM** Trunking



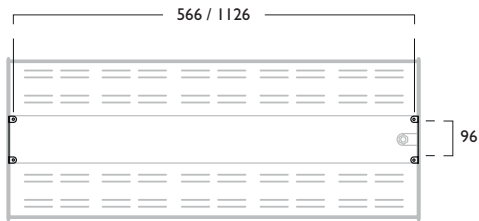
## Fixing Centres

### Quad / Quad Linear

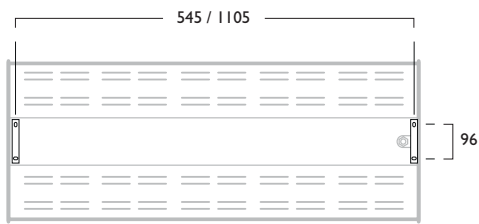
**PN** Suspended



**GR** Gripple



**SM** Surface



**TM** Trunking

