



PIR version shown

Vertigo® Quad Linear Highbay



LED

282W LED **PN493** LED **282** + 467

LED & PIR

282W LED **PN494** LED **282** + 467

PIR versions not suitable for use with Gear Types J and K



230V 50Hz **IP** 20 ϕ 1105mm ϕ 13.4kg **Ta** 45°C



- Available in a choice of lumen outputs delivering up to 42880 lumens
- Efficacies up to 116 lm/W
- Wide beam refractor (82°) as standard, ideally suited to Warehouse and Superstore applications
- Optional Extra Wide beam refractor (112°) for general illumination
- Suitable for ambient temperatures up to 45°C
- Life expectancy in excess of 60,000 hours (L70 B10) at 25°C ambient and 49,000 hours (L70 B10) at 45°C ambient
- Colour stability within 3 MacAdams
- The PIR Detector defaults can be modified with the use of the Hand Held Controller or Programmer (contact our Lighting Design Department for advice)
- Versatile installation solutions include Suspended, Surface, Trunking and Gripple. (Gripple and Trunking not supplied with fixings)
- Suspension versions supplied with 2 x 2m Suspensions and chrome clutches as standard
- IK08 Compliant

PN Pendant **GR** Gripple **SM** Surface **TM** Trunking

NB: Gripple and Trunking versions not supplied with fixings, Gripple versions can be used for chain mounting


Gear types F & G must be operated through a DSI

- A** Integral Driver
- E** Emergency
- F** Digital Dim
- G** Digital Dim + Emergency
- J** Switch Dim
- K** Switch Dim + Emergency
- S** DALI Dim
- T** DALI Dim + Emergency
- C** DALI Dim + DALI Emergency

3 Warm (3000K) **4** Neutral (4000K)

1 White (RAL 9010) **2** Urban Graphite (RAL 7046) **3** Black (RAL 9005)

Refractor Option

547 2x Extra Wide Beam  468

144 2x 5m Twin Suspensions (Wires only)

Tel: (0191) 280 9911 Email: technical@hacel.co.uk Web: www.hacel.co.uk



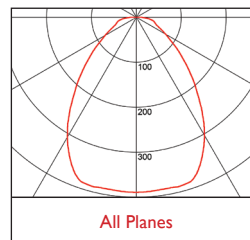
Quad Linear | 135 x 427 x 59mm

Vertigo® Quad Linear Highbay

3	Warm White LED (3000K)	CRI 80 282W
	Lumen Output	41120 lm
	LOR	0.80
	CRI	80
	Total Power	295.7W
	Power Factor	0.99
	Running Current	1.30A
	Inrush Current	230.8A (217us)
	Efficacy	111 lm/W
	Emergency Output (BLF)	534 lm (1.3%)

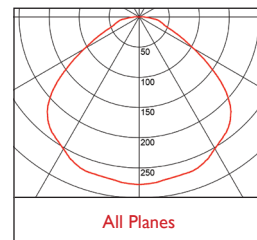
4	Neutral White LED (4000K)	CRI 80 282W
	Lumen Output	42880 lm
	LOR	0.80
	CRI	80
	Total Power	295.7W
	Power Factor	0.99
	Running Current	1.30A
	Inrush Current	230.8A (217us)
	Efficacy	116 lm/W
	Emergency Output (BLF)	557 lm (1.3%)

Photometrics



All Planes

467 DLOR: 0.80



All Planes

468 DLOR: 0.80

Suspensions and Mounting details shown over

Vertigo® Quad Linear Highbay Suspensions & Mounting

Fixing Types

PN Pendant



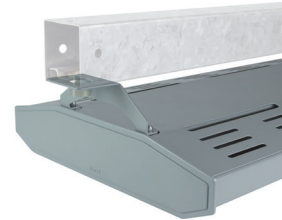
GR Gripple



SM Surface



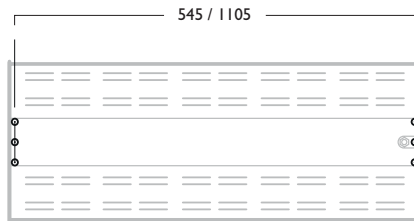
TM Trunking



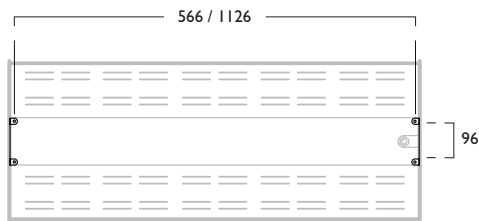
Fixing Centres

Quad / Quad Linear

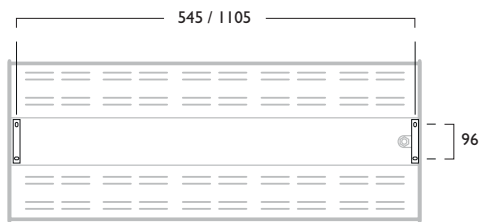
PN Suspended



GR Gripple



SM Surface



TM Trunking

