



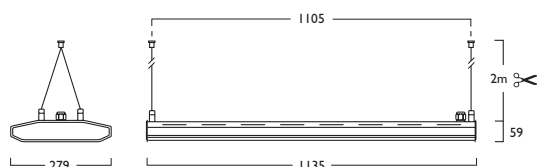
PIR version shown

## Vertigo® Duet Linear Highbay

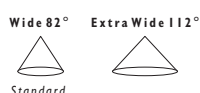
**LED**
  
 141W LED 485 LED 141 + 463

**LED & PIR**
  
 141W LED 488 LED 141 + 463

PIR versions not suitable for use with Gear Types J and K



230V IP 20 1105mm 7.1 kg Ta 45°C



- Available in a choice of lumen outputs delivering upto 21,440 lumens
- Efficacies up to 116 lm/W
- Wide beam refractor (82°) as standard, ideally suited to Warehouse and Superstore applications
- Optional extra wide beam refractor (112°) for general illumination
- Suitable for ambient temperatures up to 45°C
- Life expectancy in excess of 60,000 hours (L70 B10) at 25°C ambient and 49,000 hours (L70 B10) at 45°C ambient
- Colour stability within 3 MacAdams
- The PIR Detector defaults can be modified with the use of the Hand Held Controller or Programmer (contact our Lighting Design Department for advice)
- Versatile installation solutions include Suspended, Surface, Trunking and Gripple. (Gripple and Trunking not supplied with fixings)
- Suspension versions supplied with 2 x 2m Suspensions and chrome clutches as standard
- IK08 Compliant

PN Pendant GR Gripple SM Surface TM Trunking

NB: Gripple and Trunking versions not supplied with fixings, Gripple versions can be used for chain mounting

**Gear types F & G must be operated through a DSI**

- A** Integral Driver
- E** Emergency
- F** Digital Dim
- G** Digital Dim + Emergency
- J** Switch Dim
- K** Switch Dim + Emergency
- S** DALI Dim
- T** DALI Dim + Emergency
- C** DALI Dim + DALI Emergency

3 Warm (3000K) 4 Neutral (4000K)

1 White (RAL 9010) 2 Urban Graphite (RAL 7046) 3 Black (RAL 9005)

Refractor Option

546 2x Extra Wide Beam 466

144 2x 5m Twin Suspensions (Wires only)

Tel: (0191) 280 9911 Email: [technical@hacel.co.uk](mailto:technical@hacel.co.uk) Web: [www.hacel.co.uk](http://www.hacel.co.uk)



**Duet Linear** | 135 x 279 x 59mm

## Vertigo® Duet Linear Highbay

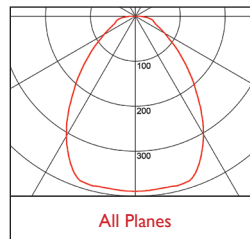
### 3 Warm White LED (3000K) CRI 80 141W

Lumen Output	20560 lm
LOR	0.80
CRI	80
Total Power	147.8W
Power Factor	0.99
Running Current	0.65A
Inrush Current	115.4A (217us)
Efficacy	111 lm/W
Emergency Output (BLF)	514 lm (2.5%)

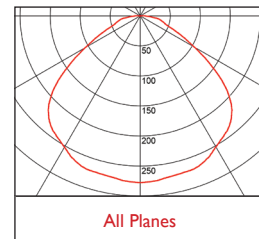
### 4 Neutral White LED (4000K) CRI 80 141W

Lumen Output	21440 lm
LOR	0.80
CRI	80
Total Power	147.8W
Power Factor	0.99
Running Current	0.65A
Inrush Current	115.4A (217us)
Efficacy	116 lm/W
Emergency Output (BLF)	536 lm (2.5%)

### Photometrics



**463** DLOR: 0.80



**466** DLOR: 0.80

*Suspensions and Mounting details shown over*

# Vertigo® Duet Linear Highbay Suspensions & Mounting

## Fixing Types

**PN** Pendant



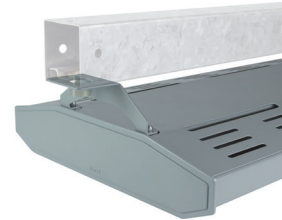
**GR** Gripple



**SM** Surface



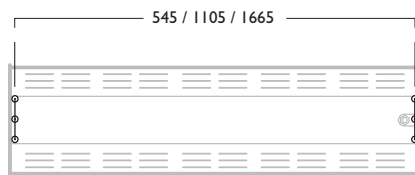
**TM** Trunking



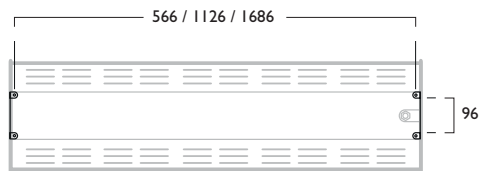
## Fixing Centres

### Duet / Duet Linear / Duet Linear Plus

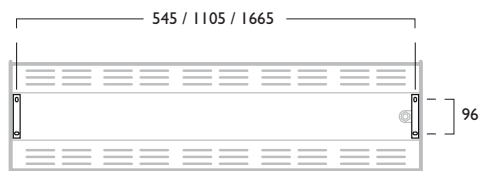
**PN** Suspended



**GR** Gripple



**SM** Surface



**TM** Trunking

