

Skylink Introduction

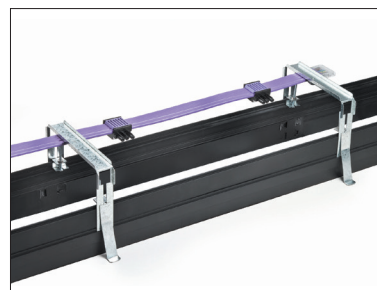
Construction

- A range of Recessed Mounting Frames are manufactured from precision extruded aluminium
- Mounting Frames accept either Recessed or Flush Fascias
- Available in Bezel and Bezel Free formats
- End Caps provide a precision die cast finish to the system
- Fixing Clamps and Continuation Links supplied
- Can be manufactured in special lengths to complete continuous runs
- Powder coat finished



Wiring

- High quality 16A seven core Ribbon Cable
- Provides both mains and dimming feeds, if required, to the Fascias
- Electrical supply to the Ribbon Cable is made by either Mains or Dimming Connector
- Ribbon Cable is specified by inserting the required length in metres (01,02 etc) at the end of the product number
- Ribbon Connector enables wiring to L1, L2 or L3 via a selector switch



LED

- LED Fascias can be used in a multiple format to create continuous runs or with End Caps to create single stand alone luminaires
- LED Fascias can be integrated with Ported and Spacer Fascias to create ambient and accent lighting scenarios
- Fascias are designed to neatly clip into the Skylink Mounting Frame
- LED Fascias are available in Recessed or Flush Formats (Formats should not be mixed)



Ported

- Neatly integrate Solo or Duet adjustable LED luminaires
- Can be utilised in either single or multiple Fascias
- Designed to simply clip into the Skylink Mounting Frame
- Can be integrated with LED and Spacer Fascias to create ambient and accent lighting scenarios
- Available in Recessed or Flush Formats (formats should not be mixed)



Spacer

- Spacer Fascias simply clip into the Mounting Frame
- Designed to be used in conjunction with Skylink LED and Ported Fascias
- Available in a choice of Recessed or Flush Formats (formats should not be mixed)
- Can be manufactured in special lengths to complete continuous runs





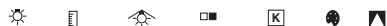
3 Warm White LED (3000K)	CRI 80	25W	46W
Lumen Output		4086 lm	6930 lm
LOR		0.87	0.87
CRI		80	80
Total Power		26.3W	50.8W
Power Factor		0.98	0.95
Running Current		0.12A	0.23A
Inrush Current		32.0A (240us)	33.0A (250us)
Efficacy		135 lm/W	118 lm/W
Emergency Output (BLF)		449 lm (11%)	415 lm (6%)

4 Neutral White LED (4000K)	CRI 80	25W	46W
Lumen Output		4268 lm	7240 lm
LOR		0.87	0.87
CRI		80	80
Total Power		26.3W	50.8W
Power Factor		0.98	0.95
Running Current		0.12A	0.23A
Inrush Current		32.0A (240us)	33.0A (250us)
Efficacy		141 lm/W	123 lm/W
Emergency Output (BLF)		469 lm (11%)	434 lm (6%)

- Opal LED Fascias offer superior uniform light distribution with an exceptional LOR of 0.87
- Available in a choice of lumen outputs, delivering up to 7240 lumens
- Efficacies up to 141 lm/W
- Class leading, branded Zhaga Book 7 LED and driver incorporated
- High quality polycarbonate diffuser with wipe clean surface
- Life expectancy in excess of 51,000 hours (L80 B10)

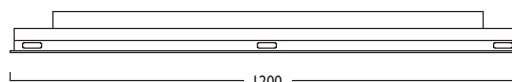
Skylink Opal

Opal



LED

25W	LED	1200mm	014	LED	25	400
46W	LED	1200mm	014	LED	46	400



230V
50Hz

IP
20

5.2 kg

SF Flush Fascia **SR** Recessed Fascia

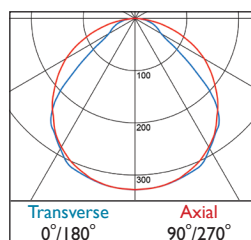
Gear types F & G must be operated through a DSI

- A** Integral Driver
- E** Emergency
- F** Digital Dim
- G** Digital Dim + Emergency
- J** Switch Dim
- K** Switch Dim + Emergency
- S** DALI Dim
- T** DALI Dim + Emergency
- C** DALI Dim + DALI Emergency

3 Warm (3000K) **4** Neutral (4000K)

1 White (RAL 9010) **2** Urban Graphite (RAL 7046) **3** Black (RAL 9005)

Tel: (0191) 280 9911 Email: technical@hacel.co.uk Web: www.hacel.co.uk



400 DLOR: 0.87

Hacel[®]
Fluent in Lighting