

Skylink Introduction

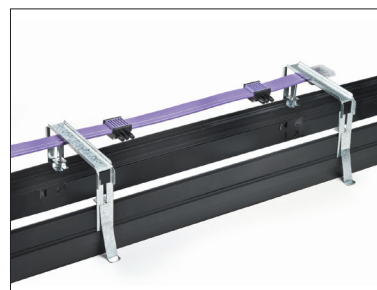
Construction

- A range of Recessed Mounting Frames are manufactured from precision extruded aluminium
- Mounting Frames accept either Recessed or Flush Fascias
- Available in Bezel and Bezel Free formats
- End Caps provide a precision die cast finish to the system
- Fixing Clamps and Continuation Links supplied
- Can be manufactured in special lengths to complete continuous runs
- Powder coat finished



Wiring

- High quality 16A seven core Ribbon Cable
- Provides both mains and dimming feeds, if required, to the Fascias
- Electrical supply to the Ribbon Cable is made by either Mains or Dimming Connector
- Ribbon Cable is specified by inserting the required length in metres (01,02 etc) at the end of the product number
- Ribbon Connector enables wiring to L1, L2 or L3 via a selector switch



LED

- LED Fascias can be used in a multiple format to create continuous runs or with End Caps to create single stand alone luminaires
- LED Fascias can be integrated with Ported and Spacer Fascias to create ambient and accent lighting scenarios
- Fascias are designed to neatly clip into the Skylink Mounting Frame
- LED Fascias are available in Recessed or Flush Formats (Formats should not be mixed)



Ported

- Neatly integrate Solo or Duet adjustable LED luminaires
- Can be utilised in either single or multiple Fascias
- Designed to simply clip into the Skylink Mounting Frame
- Can be integrated with LED and Spacer Fascias to create ambient and accent lighting scenarios
- Available in Recessed or Flush Formats (formats should not be mixed)



Spacer

- Spacer Fascias simply clip into the Mounting Frame
- Designed to be used in conjunction with Skylink LED and Ported Fascias
- Available in a choice of Recessed or Flush Formats (formats should not be mixed)
- Can be manufactured in special lengths to complete continuous runs



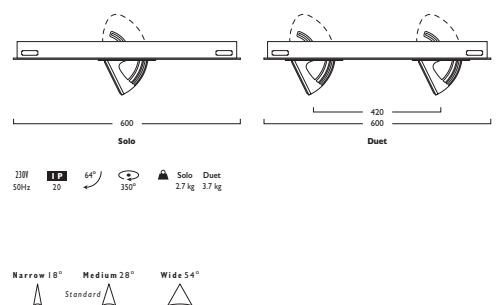


Skylink Aleda® Adjustable Ported Fascias

LED CRI 80									
Wattage	Technology	Format	Length	Code	LED	Beam	Temp	Optics	Price
12W	LED	Solo	600mm	366	LED	12	+	377	
17W	LED	Solo	600mm	366	LED	17	+	377	
24W	LED	Solo	600mm	366	LED	24	+	377	
31W	LED	Solo	600mm	366	LED	31	+	377	
2x12W	LED	Duet	600mm	368	LED	12	+	377	
2x17W	LED	Duet	600mm	368	LED	17	+	377	
2x24W	LED	Duet	600mm	368	LED	24	+	377	
2x31W	LED	Duet	600mm	368	LED	31	+	377	

LED CRI 90									
Wattage	Technology	Format	Length	Code	LED	Beam	Temp	Optics	Price
12W	LED	Solo	600mm	367	LED	12	+	378	
17W	LED	Solo	600mm	367	LED	17	+	378	
24W	LED	Solo	600mm	367	LED	24	+	378	
31W	LED	Solo	600mm	367	LED	31	+	378	
2x12W	LED	Duet	600mm	369	LED	12	+	378	
2x17W	LED	Duet	600mm	369	LED	17	+	378	
2x24W	LED	Duet	600mm	369	LED	24	+	378	
2x31W	LED	Duet	600mm	369	LED	31	+	378	

- Neat integration of Aleda® Adjustable Single point Zhaga Book 3 LED luminaires
- Available in a choice of lumen outputs, delivering up to 5029 lumens
- Efficacies up to 127 lm/W
- CRI 80 and CRI 90 versions
- Neatly integrated smooth and precise pan and tilt adjustment
- Available in Solo and Duet formats
- Choice of optical lenses, Medium as standard
- UGR <22
- Life expectancy in excess of 60,000 hours (L70 B10)



SF Flush Fascia **SR** Recessed Fascia

A Integral Driver
F Digital Dim
J Switch Dim
S DALI Dim

3 Warm (3000K) **4** Neutral (4000K)

1 White (RAL 9010) **2** Urban Graphite (RAL 7046) **3** Black (RAL 9005)

Reflector		CRI 80	CRI 90
384	1x Narrow Beam	379	380
385	1x Wide Beam	381	382
480	2x Narrow Beam	379	380
481	2x Wide Beam	381	382

Luminescent Halo, Baffle Options *Shown*



Skylink Aleda® Adjustable Ported Fascias

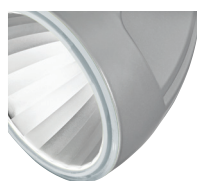
3 Warm White LED (3000K)	CRI 80				CRI 90			
	12W	17W	24W	31W	12W	17W	24W	31W
Lumen Output	1945 lm	2715 lm	3838 lm	4823 lm	1648 lm	2299 lm	3251 lm	4085 lm
LOR	0.81	0.81	0.81	0.81	0.81	0.81	0.81	0.81
CRI	80	80	80	80	90	90	90	90
Total Power	13.2W	18.8W	25.5W	33.5W	13.2W	18.8W	25.5W	33.5W
Power Factor	0.90	0.93	0.95	0.96	0.90	0.93	0.95	0.96
Running Current	0.06A	0.09A	0.12A	0.15A	0.06A	0.09A	0.12A	0.15A
Inrush Current	8.0A (80us)	8.0A (80us)	10.0A (100us)	10.0A (100us)	8.0A (80us)	8.0A (80us)	10.0A (100us)	10.0A (100us)
Efficacy	117 lm/W	116 lm/W	121 lm/W	116 lm/W	101 lm/W	99 lm/W	103 lm/W	98 lm/W
Emergency Output (BLF)	N/A	N/A	N/A	N/A	N/A	N/A	N/A	N/A

4 Neutral White LED (4000K)	CRI 80				CRI 90			
	12W	17W	24W	31W	12W	17W	24W	31W
Lumen Output	2028 lm	2830 lm	4002 lm	5029 lm	1767 lm	2465 lm	3486 lm	4380 lm
LOR	0.81	0.81	0.81	0.81	0.81	0.81	0.81	0.81
CRI	80	80	80	80	90	90	90	90
Total Power	13.2W	18.8W	25.5W	33.5W	13.2W	18.8W	25.5W	33.5W
Power Factor	0.90	0.93	0.95	0.96	0.90	0.93	0.95	0.96
Running Current	0.06A	0.09A	0.12A	0.15A	0.06A	0.09A	0.12A	0.15A
Inrush Current	8.0A (80us)	8.0A (80us)	10.0A (100us)	10.0A (100us)	8.0A (80us)	8.0A (80us)	10.0A (100us)	10.0A (100us)
Efficacy	124 lm/W	121 lm/W	127 lm/W	121 lm/W	108 lm/W	106 lm/W	110 lm/W	105 lm/W
Emergency Output (BLF)	N/A	N/A	N/A	N/A	N/A	N/A	N/A	N/A

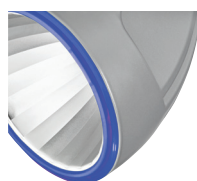
Table applies to one LED Light Engine

Options

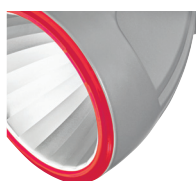
■ Luminescent Halo Options



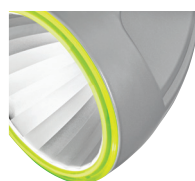
473 1x / 486 2x
Etched Ice



474 1x / 487 2x
Neptune Blue

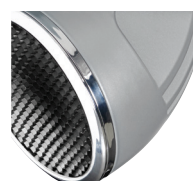


475 1x / 488 2x
Mars Red



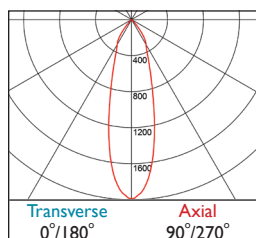
477 1x / 489 2x
Acid Green

■ Baffle Option

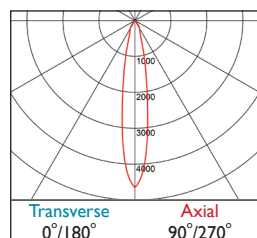


478 1x / 490 2x
Anti Glare Baffle

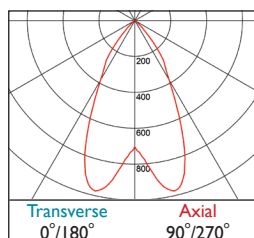
Photometrics



377-378 DLOR: 0.81



379-380 DLOR: 0.83



381-382 DLOR: 0.86