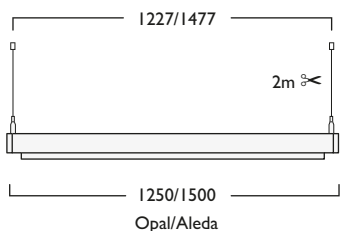


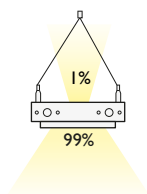
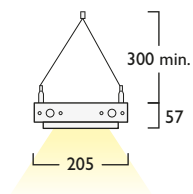
# Link

## Suspended & Surface

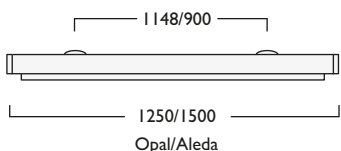
- Exciting and imaginative surface or suspended horizontal system
- Allows a diverse range of lighting scenarios to be created
- Neatly integrates general, accent and ambient lighting
- Engineering excellence with contemporary styling
- Branded components ensure maximum level of performance and reliability
- Suspended Modules are supplied with 2x 2m Twin Wire Suspensions



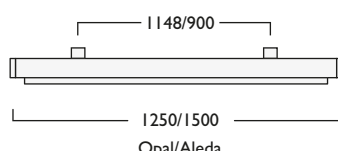
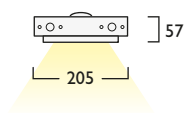
**Link Suspended**



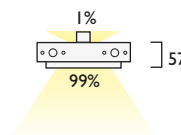
**+ Light Spill**



**Link Surface**



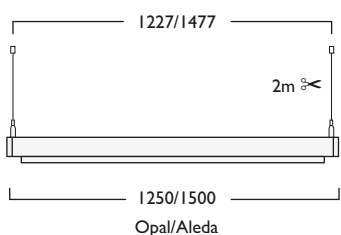
**Link Surface + Light Spill**



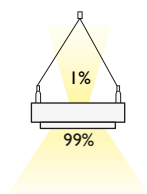
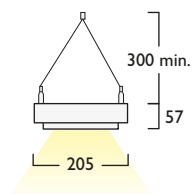
# Solo

## Suspended & Surface

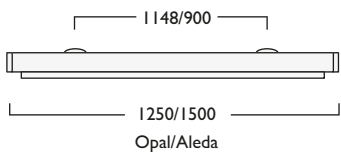
- Designed to complement Link Modules
- Slim, sleek design enhanced by choice of surface and suspended options
- Choice of light sources available
- Encompasses design, performance and quality engineering
- Available in a choice of powder coated finishes including corporate colours to order
- Suspended Modules are supplied with 2x 2m Twin Wire Suspensions



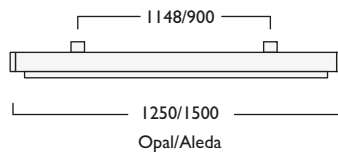
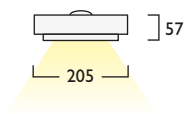
**Solo Suspended**



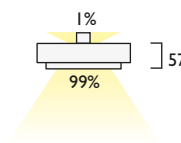
**+ Light Spill**



**Solo Surface**



**Solo Surface + Light Spill**





3 Warm White LED (3000K)	CRI 80				CRI 90			
	12W	17W	24W	31W	12W	17W	24W	31W
Lumen Output	1945 lm	2715 lm	3838 lm	4823 lm	1648 lm	2299 lm	3251 lm	4085 lm
LOR	0.81	0.81	0.81	0.81	0.81	0.81	0.81	0.81
CRI	80	80	80	80	90	90	90	90
Total Power	13.2W	18.8W	25.5W	33.5W	13.2W	18.8W	25.5W	33.5W
Power Factor	0.90	0.93	0.95	0.96	0.90	0.93	0.95	0.96
Running Current	0.06A	0.09A	0.12A	0.15A	0.06A	0.09A	0.12A	0.15A
Inrush Current	8.0A (80us)	8.0A (80us)	10.0A (100us)	10.0A (100us)	8.0A (80us)	8.0A (80us)	10.0A (100us)	10.0A (100us)
Efficacy	117 lm/W	116 lm/W	121 lm/W	116 lm/W	101 lm/W	99 lm/W	103 lm/W	98 lm/W
Emergency Output (BLF)	N/A	N/A	N/A	N/A	N/A	N/A	N/A	N/A

4 Neutral White LED (4000K)	CRI 80				CRI 90			
	12W	17W	24W	31W	12W	17W	24W	31W
Lumen Output	2028 lm	2830 lm	4002 lm	5029 lm	1767 lm	2465 lm	3486 lm	4380 lm
LOR	0.81	0.81	0.81	0.81	0.81	0.81	0.81	0.81
CRI	80	80	80	80	90	90	90	90
Total Power	13.2W	18.8W	25.5W	33.5W	13.2W	18.8W	25.5W	33.5W
Power Factor	0.90	0.93	0.95	0.96	0.90	0.93	0.95	0.96
Running Current	0.06A	0.09A	0.12A	0.15A	0.06A	0.09A	0.12A	0.15A
Inrush Current	8.0A (80us)	8.0A (80us)	10.0A (100us)	10.0A (100us)	8.0A (80us)	8.0A (80us)	10.0A (100us)	10.0A (100us)
Efficacy	124 lm/W	121 lm/W	127 lm/W	121 lm/W	108 lm/W	106 lm/W	110 lm/W	105 lm/W
Emergency Output (BLF)	N/A	N/A	N/A	N/A	N/A	N/A	N/A	N/A

Table applies to one LED Light Engine

## Linear Light4 Aleda® Adjustable

### Link & Solo Modules

LED CRI 80										LED CRI 90									
Quantity	Power	LED	Length	Code	Beam	LED	Quantity	Code	Beam	Quantity	Power	LED	Length	Code	Beam	LED	Quantity	Code	Beam
2x	12W	LED	1500mm	046	12	+	377			2x	12W	LED	1500mm	047	12	+	378		
2x	17W	LED	1500mm	046	17	+	377			2x	17W	LED	1500mm	047	17	+	378		
2x	24W	LED	1500mm	046	24	+	377			2x	24W	LED	1500mm	047	24	+	378		
2x	31W	LED	1500mm	046	31	+	377			2x	31W	LED	1500mm	047	31	+	378		
3x	12W	LED	1500mm	048	12	+	377			3x	12W	LED	1500mm	049	12	+	378		
3x	17W	LED	1500mm	048	17	+	377			3x	17W	LED	1500mm	049	17	+	378		
3x	24W	LED	1500mm	048	24	+	377			3x	24W	LED	1500mm	049	24	+	378		
3x	31W	LED	1500mm	048	31	+	377			3x	31W	LED	1500mm	049	31	+	378		

230V 50Hz IP20 1477mm 11.0 kg

LA Link Suspended LD Solo Suspended

A Integral LED Driver  
 F Digital Dim  
 J Switch Dim  
 S DALI Dim

3 Warm (3000K) 4 Neutral (4000K)

1 White (RAL 9010) 2 Urban Graphite (RAL 7046) 3 Black (RAL 9005)

Reflector	CRI 80	CRI 90
480 2x Narrow Beam	379	380
481 2x Wide Beam	381	382
482 3x Narrow Beam	379	380
483 3x Wide Beam	381	382

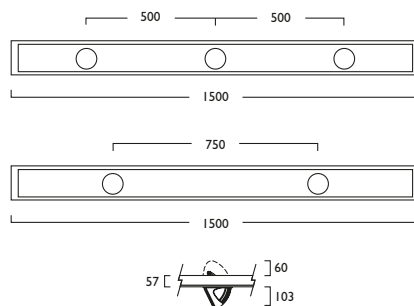
144 2x 5m Twin suspensions (wires only)

Luminescent Halo, Baffle Options Shown



## Linear Light4 Aleda<sup>®</sup> Adjustable

- Stylish Aleda<sup>®</sup> LED in Duet or Trio format neatly integrated into LL4 Module
- Available in a choice of lumen outputs, delivering up to 5029 lumens
- Efficacies up to 127 lm/W
- Single point Zhaga Book 3 LED
- Life expectancy in excess of 60,000 hours (L70 B10)
- Luminaires feature smooth and precise pan and tilt adjustment
- Link and Solo Modules available
- 2x 2m twin Suspension Wires and Chrome Clutches for ease of adjustment

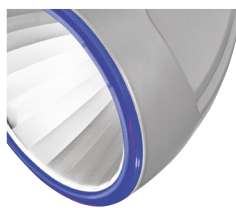


### Options

#### ■ Luminescent Halo, Baffle Options



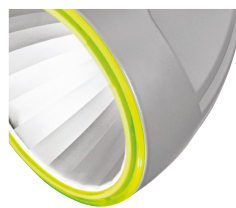
**486 2x / 491 3x**  
Etched Ice



**487 2x / 492 3x**  
Neptune Blue



**488 2x / 493 3x**  
Mars Red

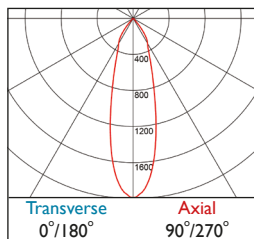


**489 2x / 494 3x**  
Acid Green

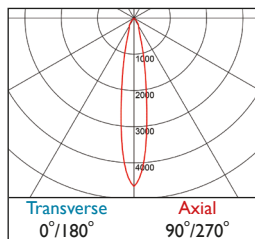


**490 2x / 495 3x**  
Anti Glare Baffle

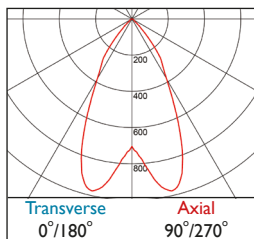
### Photometrics



**377-378** DLOR: 0.81



**379-380** DLOR: 0.83



**381-382** DLOR: 0.86