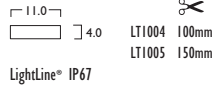


LightLine® IP67



LED

50W	LED	1000mm	LT1004	P	LED	50	445
79W	LED	5100mm	LT1005	P	LED	79	446

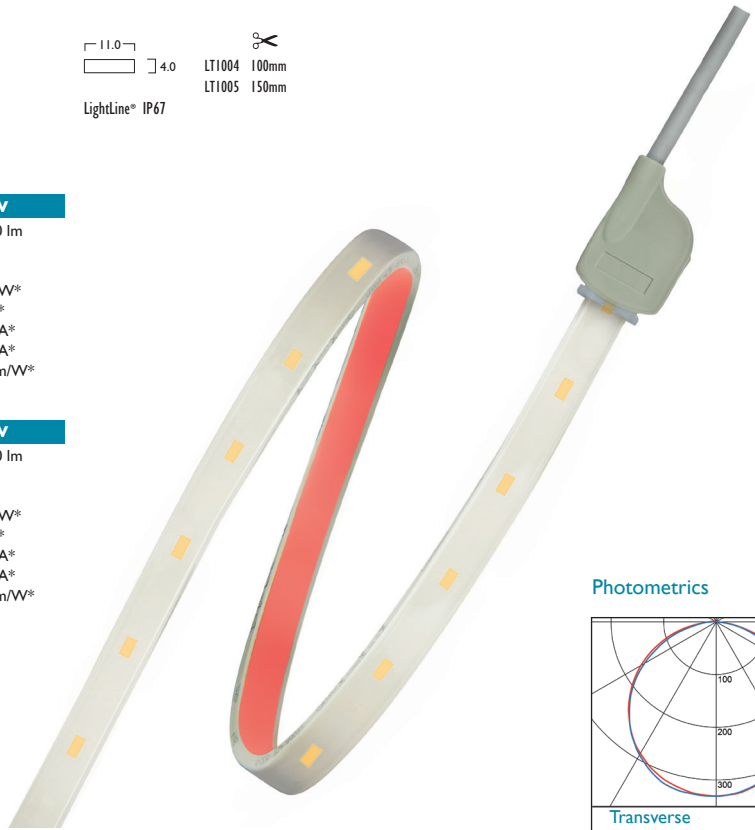


LightLine® IP67

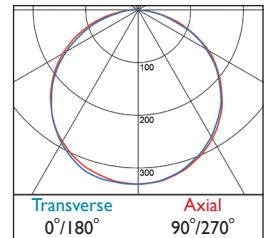
PRODUCT INFORMATION

	CRI 80	50W	79W
3 Warm White LED (3000K)			
Lumen Output		3500 lm	6380 lm
LOR		1.00	1.00
CRI		80	80
Total Power		57.0W*	89.4W*
Power Factor		0.94*	0.95*
Running Current		0.26A*	0.41A*
Inrush Current		22.0A*	35.0A*
Efficacy		61 lm/W*	71 lm/W*
Emergency Output (BLF)		N/A	N/A
4 Neutral White LED (4000K)			
Lumen Output		3900 lm	7140 lm
LOR		1.00	1.00
CRI		80	80
Total Power		57.0W*	89.4W*
Power Factor		0.94*	0.95*
Running Current		0.26A*	0.41A*
Inrush Current		22.0A*	35.0A*
Efficacy		68 lm/W*	79 lm/W*
Emergency Output (BLF)		N/A	N/A

*Typical values may vary depending on Driver used



Photometrics



445/446 DLOR: 1.00

LightLine® IP67 Connectors

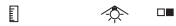


Starter Connector	500mm	LT1006	P	CON 005
Connector	180mm	LT1007	P	CON 005
End Cap	N/a	LT1008	X	CAP 000
Fixing Bracket	N/a	LT1009	X	BKT 000

- Flexible IP67 rated LED Modules
- Available in a choice of lumen outputs, delivering up to 1400 lumens per metre
- Efficacies up to 79 lm/W, colour stability within 4 MacAdams
- Life expectancy in excess of 50,000 (L70 B50)
- Single colour and RGB available on request
- In ambient temperatures above 40C, Hacer recommend using Mounting Track
- LED Modules should be matched to Driver capabilities/limitations when specifying
- Mounting Track can be used as a heatsink
- Mounting Track is pre-drilled or can be fitted with Fixing Brackets
- Flat Diffuser has a transmission of 50%, Curved Diffuser has a transmission of 59%

LightLine® Drivers

24V DC Constant Voltage



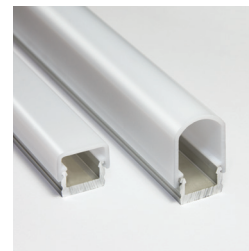
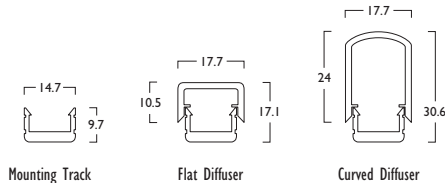
Non Dimming		L x W x H			
20W	IP20	109 x 50 x 35mm	CP1014	A	EPP 020
40W	IP66	208 x 43 x 26mm	CP1192	A	EPP 040
50W	IP20	242 x 40 x 16mm	CP1015	A	EPP 050
100W	IP67	240 x 50 x 34mm	CP1198	A	EPP 100
130W	IP67	220 x 63 x 37mm	CP1202	A	EPP 130
250W	IP66	265 x 68 x 40mm	CP1193	A	EPP 250

DALI/Switch Dimming

80W	IP20	346 x 32 x 22mm	CP1063	A	EPP 080
-----	------	-----------------	--------	---	---------

LightLine® Accessories

Mounting Track	2100mm	LT1010	X	TRK 000
Flat Diffuser	2100mm	LT1020	X	DFR 000
Curved Diffuser	2100mm	LT1011	X	DFR 000
Curved Diffuser End Cap	N/A	LT1012	X	CAP 000
Mounting Track Fixing Bracket	N/A	LT1013	X	BKT 000



P 230/24V Constant Voltage Driver Required
X Non electrical component