



Infinitas® Manta®

Infinitas® by Hacer is a refined LED system. Sleek and slender in its design, the system is precision extruded and offers continuous lines of uninterrupted uniform lighting. The Infinitas® Manta luminaires offer optional accent lighting, to further enhance the versatility of Infinitas® Range. Available in Surface, Suspended or Recessed, in both Bezel and Bezel Free formats, the flexibility is further enhanced by uplighting variations and completely illuminated corners.

Stylish solo modules are also available to compliment the continuous system.

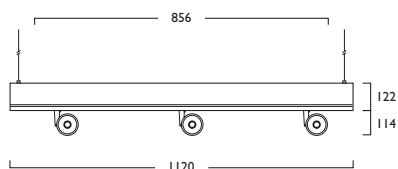
- Dynamic Single point Zhaga Book 3 LED Power Spot provides distinctive accent lighting
- Available in a choice of lumen outputs, delivering up to 4002 lumens
- Efficacies up to 127 lm/W
- Outstanding energy efficiency and life expectancy of 60,000 hours (L70 B10)
- Superior colour rendering properties of 80 and 90
- Colour stability within 3 MacAdams
- Medium beam reflector supplied as standard
- Two and three head Manta® versions available

Suspended/Surface/Recessed Modules Fixing Centres (mm)

Suspended fixing centres



Surface/Recessed fixing centres



230V 50Hz **IP20** 90° 353° 2x Manta 7.0 kg 3x Manta 8.0 kg



	CRI 80				CRI 90					
	12W	17W	24W	12W	17W	24W	12W	17W	24W	
3 Warm White LED (3000K)										
Lumen Output	1945 lm	2715 lm	3838 lm	1648 lm	2299 lm	3251 lm				
LOR	0.81	0.81	0.81	0.81	0.81	0.81				
CRI	80	80	80	90	90	90				
Total Power	12.9W	18.9W	25.5W	12.9W	18.9W	25.5W				
Power Factor	0.92	0.95	0.95	0.92	0.95	0.95				
Running Current	0.06A	0.09A	0.12A	0.06A	0.09A	0.12A				
Inrush Current	3.8A (42us)	8.0A (80us)	10.0A (100us)	3.8A (42us)	8.0A (80us)	10.0A (100us)				
Efficacy	122 lm/W	116 lm/W	121 lm/W	103 lm/W	98 lm/W	103 lm/W				
Emergency Output (BLF)	N/A	N/A	N/A	N/A	N/A	N/A				
4 Neutral White LED (4000K)										
Lumen Output	2028 lm	2830 lm	4002 lm	1767 lm	2465 lm	3486 lm				
LOR	0.81	0.81	0.81	0.81	0.81	0.81				
CRI	80	80	80	90	90	90				
Total Power	12.9W	18.9W	25.5W	12.9W	18.9W	25.5W				
Power Factor	0.92	0.95	0.95	0.92	0.95	0.95				
Running Current	0.06A	0.09A	0.12A	0.06A	0.09A	0.12A				
Inrush Current	3.8A (42us)	8.0A (80us)	10.0A (100us)	3.8A (42us)	8.0A (80us)	10.0A (100us)				
Efficacy	127 lm/W	121 lm/W	127 lm/W	110 lm/W	105 lm/W	110 lm/W				
Emergency Output (BLF)	N/A	N/A	N/A	N/A	N/A	N/A				

Table applies to one LED Light Engine

Infinitas® Manta®

CRI 80											CRI 90																				
2x	3x	12W	17W	24W	LED	1120mm	381	381	381	LED	12	17	24	+	362	2x	3x	12W	17W	24W	LED	1120mm	390	390	390	LED	12	17	24	+	363
2x	3x	12W	17W	24W	LED	1120mm	381	381	381	LED	12	17	24	+	362	2x	3x	12W	17W	24W	LED	1120mm	390	390	390	LED	12	17	24	+	363
2x	3x	12W	17W	24W	LED	1120mm	382	382	382	LED	12	17	24	+	362	2x	3x	12W	17W	24W	LED	1120mm	391	391	391	LED	12	17	24	+	363

- IU** Link Suspended **IW** Link Surface **IY** Link Recessed Bezel **IZ** Link Recessed Bezel Free
- IJ** Solo Suspended **IL** Solo Surface **IQ** Solo Recessed Bezel **IR** Solo Recessed Bezel Free
- A** Integral Driver
- J** Switch Dim
- S** DALI Dim
- 3** Warm (3000K) **4** Neutral (4000K)
- 1** White (RAL 9010) **2** Urban Graphite (RAL 7046) **3** Black (RAL 9005)

Reflector	CRI 80	CRI 90
480 2x Narrow Beam	364	365
481 2x Wide Beam	366	367
482 3x Narrow Beam	364	365
483 3x Wide Beam	366	367

303 2x 5m Suspension (wire only)

Luminescent Halo, Baffle Options Shown



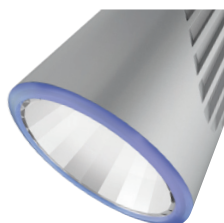
Infinitas® Manta®

Options

■ Luminescent Halo, Baffle Options



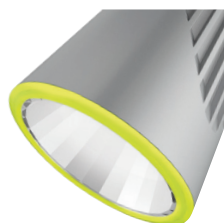
486 2x / 491 3x
Etched Ice



487 2x / 492 3x
Neptune Blue



488 2x / 493 3x
Mars Red

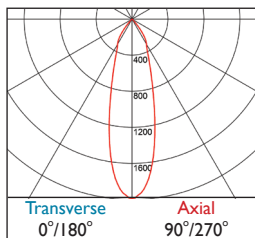


489 2x / 494 3x
Acid Green

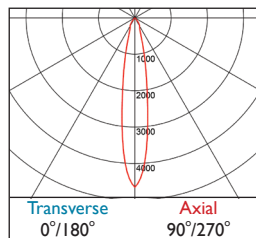


490 2x / 495 3x
Anti Glare Baffle

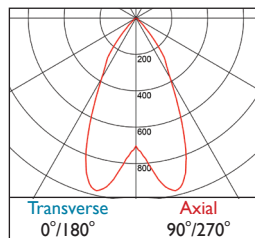
Photometrics



362-363 DLOR: 0.81



364-365 DLOR: 0.83



366-367 DLOR: 0.90

Infinitas® End Caps

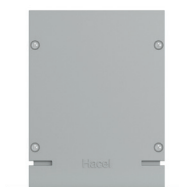
End Caps	Surface/Suspended	Recessed Bezel	Recessed Bezel Free
2x End Caps	IN370	IN371	IN372
2x End Caps	X CAP000	X CAP000	X CAP000
2x End Caps	-	-	-



Surface/Suspended



Recessed Bezel



Recessed Bezel Free