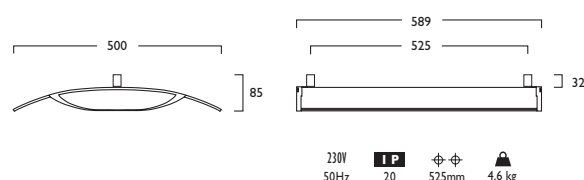




	CRI 80	17W	24W
<b>3 Warm White LED (3000K)</b>			
Lumen Output		2704 lm	4086 lm
LOR	0.80	0.80	0.80
CRI	80	80	80
Total Power		19.4W	26.3W
Power Factor	0.95	0.95	0.98
Running Current	0.09A	0.12A	0.12A
Inrush Current	21.0A (126us)	32.0A (240us)	32.0A (240us)
Efficacy	111 lm/W	124 lm/W	124 lm/W
Emergency Output (BLF)		405 lm (15%)	449 lm (11%)

	CRI 80	17W	24W
<b>4 Neutral White LED (4000K)</b>			
Lumen Output		2832 lm	4268 lm
LOR	0.80	0.80	0.80
CRI	80	80	80
Total Power		19.4W	26.3W
Power Factor	0.95	0.95	0.98
Running Current	0.09A	0.12A	0.12A
Inrush Current	21.0A (126us)	32.0A (240us)	32.0A (240us)
Efficacy	116 lm/W	129 lm/W	129 lm/W
Emergency Output (BLF)		424 lm (15%)	469 lm (11%)



## iMod<sup>®</sup> Surface



### LED

17W LED	SM099	LED	17	+	434
24W LED	SM099	LED	24	+	434

- Imaginative translucent design creates a unique and distinctive style statement
- Available in a choice of lumen outputs, delivering up to 4268 lumens
- Efficacies up to 115 lm/W
- Offering 60,000 hour life expectancy (L70 B10)
- Comprehensive choice of Gear Types available
- Luminescent Wing offers vivid coloured indirect lighting whilst maintaining white direct illumination
- Complementary Pendant version available

**Gear types F & G must be operated through a DSI**

- A** Integral Driver
- E** Emergency
- F** Digital Dim
- G** Digital Dim + Emergency
- J** Switch Dim
- K** Switch Dim + Emergency
- S** DALI Dim
- T** DALI Dim + Emergency
- C** DALI Dim + DALI Emergency

**3** Warm (3000K)    **4** Neutral (4000K)

**1** White (RAL 9010)    **2** Urban Graphite (RAL 7046)

Luminescent Wing Options Shown

**226** LG7T bar Reflectance Panel

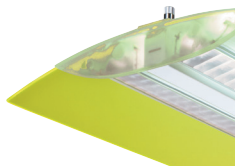


## iMod<sup>®</sup> Surface

### ■ Luminescent Wing Options

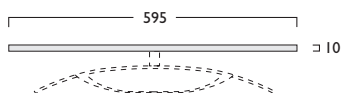


229 Mars Red



231 Acid Green

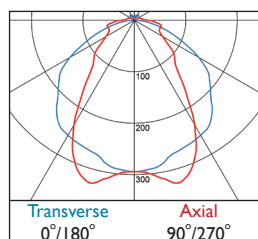
### 226 LG7 T bar Reflectance Panel



Provides the correct reflectance to achieve LG7 in T bar suspended ceilings

**LG7 in accordance with SLL Code for Lighting 2012**

### Photometrics



**434** ULOR: 0.05 DLOR: 0.75