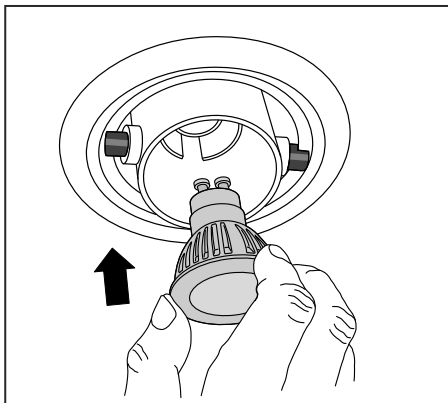
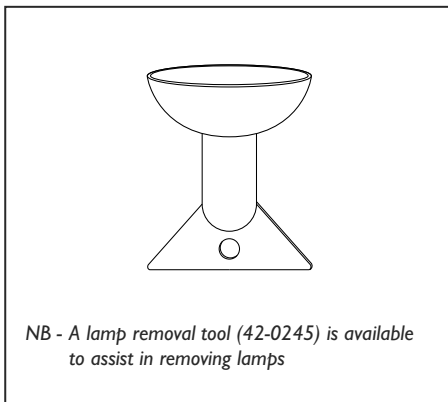


Lamp installation/removal

1



2



NB - A lamp removal tool (42-0245) is available to assist in removing lamps

IMPORTANT INFORMATION

Asara 091 Adjustable



Disconnect electricity supply before installation.

To be installed by qualified personnel only.

When installing, Hacer recommends wearing disposable gloves to avoid fingerprinting to the paint work of the luminaire.

Read leaflet fully before installation.

Lamps should be installed and used within the lamp manufacturers guidelines.

Hacer[®]
Fluent in Lighting

THE SILVERLINK, WALLSEND, NEWCASTLE UPON TYNE,
TYNE & WEAR, NE28 9ND

TECHNICAL: (0191) **280 9914**

FAX:: (0191) **263 0946**

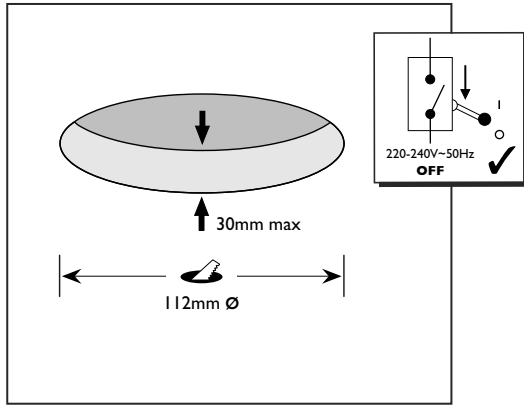
E-MAIL: technical@hacer.co.uk

WEB: www.hacer.co.uk

10/2015 79_0132

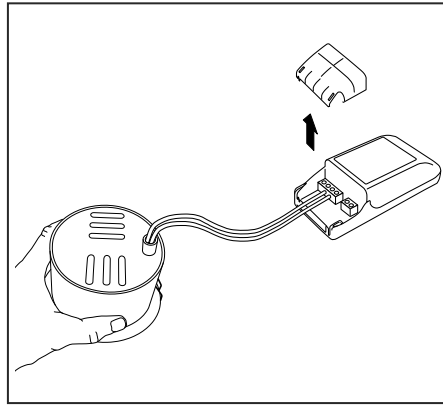
Preparation

1



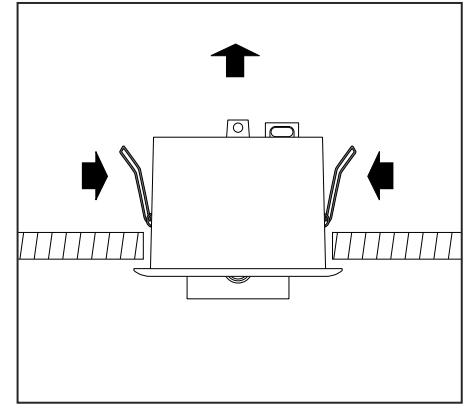
Wiring (LVH/MHB)

1



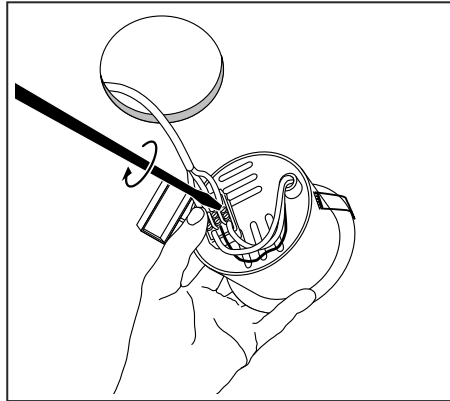
Installation Cont.

2

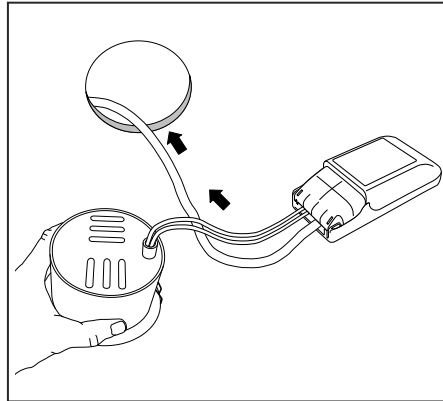


Wiring (LED/MVH)

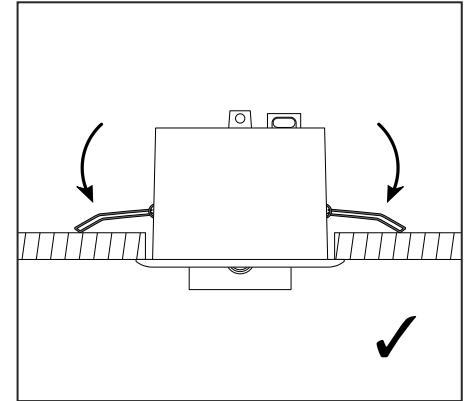
1



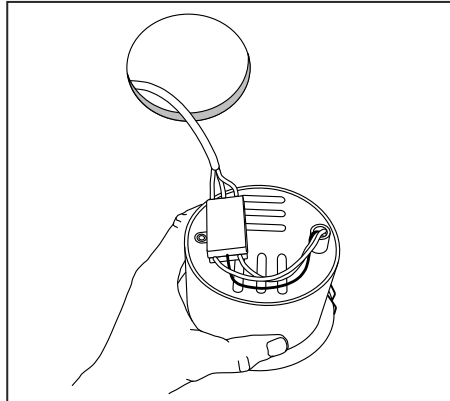
2



3

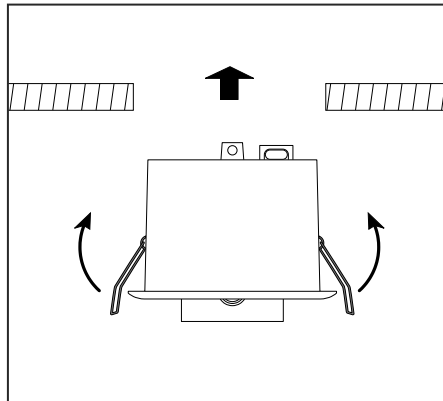


2



Installation

1



4

