



## Artus®

LED CRI 80

Surface

12W	LED	ISO17	LED	12	+	362
17W	LED	ISO17	LED	17	+	362
24W	LED	ISO17	LED	24	+	362

Single Circuit Track

12W	LED	TS017	A LED	12	+	362
17W	LED	TS017	A LED	17	+	362
24W	LED	TS017	A LED	24	+	362

Three Circuit Track

12W	LED	TT017	LED	12	+	362
17W	LED	TT017	LED	17	+	362
24W	LED	TT017	LED	24	+	362

LED CRI 90

Surface

12W	LED	IS293	LED	12	+	363
17W	LED	IS293	LED	17	+	363
24W	LED	IS293	LED	24	+	363

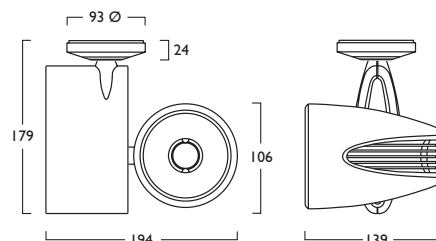
Single Circuit Track

12W	LED	TS293	A LED	12	+	363
17W	LED	TS293	A LED	17	+	363
24W	LED	TS293	A LED	24	+	363

Three Circuit Track

12W	LED	TT293	LED	12	+	363
17W	LED	TT293	LED	17	+	363
24W	LED	TT293	LED	24	+	363

- CRI of 80 and 90 available, Single point Zhaga Book 3 LED
- Efficacies up to 127 lm/W
- Available in a choice of lumen outputs, delivering up to 4002 lumens
- Medium beam reflector supplied as standard (narrow and wide beam also available)
- Effective thermal management offers a life expectancy in excess of 60,000 hours (L70 B10)
- Colour stability within 3 MacAdams
- Surface, Single and Three Circuit Track versions available
- Dimmable Three Circuit Track versions use Three Phase adaptors permitting only single circuit control. The Track requires the relevant dimming wiring.



230V 50Hz IP20 90° 355° 50mm 1.1 kg



A Integral Driver  
J Switch Dim  
S DALI Dim

3 Warm (3000K) 4 Neutral (4000K)

1 White (RAL 9010) 2 Urban Graphite (RAL 7046) 3 Black (RAL 9005)

Reflector	CRI 80	CRI 90
384 Narrow Beam	364	365
385 Wide Beam	366	367

Luminescent Halo, Baffle Options Shown

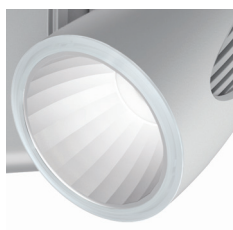


## Artus®

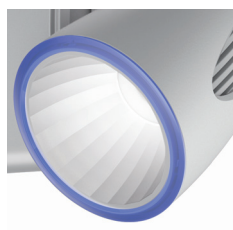
	CRI 80			CRI 90		
	12W	17W	24W	12W	17W	24W
<b>3 Warm White LED (3000K)</b>						
Lumen Output	1945 lm	2715 lm	3838 lm	1648 lm	2299 lm	3251 lm
LOR	0.81	0.81	0.81	0.81	0.81	0.81
CRI	80	80	80	90	90	90
Total Power	12.9W	18.9W	25.5W	12.9W	18.9W	25.5W
Power Factor	0.92	0.95	0.95	0.92	0.95	0.95
Running Current	0.06A	0.09A	0.12A	0.06A	0.09A	0.12A
Inrush Current	3.8A (42us)	8.0A (80us)	10.0A (100us)	3.8A (42us)	8.0A (80us)	10.0A (100us)
Efficacy	122 lm/W	116 lm/W	121 lm/W	103 lm/W	98 lm/W	103 lm/W
Emergency Output (BLF)	N/A	N/A	N/A	N/A	N/A	N/A
<b>4 Neutral White LED (4000K)</b>						
Lumen Output	2028 lm	2830 lm	4002 lm	1767 lm	2465 lm	3486 lm
LOR	0.81	0.81	0.81	0.81	0.81	0.81
CRI	80	80	80	90	90	90
Total Power	12.9W	18.9W	25.5W	12.9W	18.9W	25.5W
Power Factor	0.92	0.95	0.95	0.92	0.95	0.95
Running Current	0.06A	0.09A	0.12A	0.06A	0.09A	0.12A
Inrush Current	3.8A (42us)	8.0A (80us)	10.0A (100us)	3.8A (42us)	8.0A (80us)	10.0A (100us)
Efficacy	127 lm/W	121 lm/W	127 lm/W	110 lm/W	105 lm/W	110 lm/W
Emergency Output (BLF)	N/A	N/A	N/A	N/A	N/A	N/A

### Options

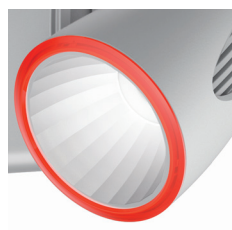
#### ■ Luminescent Halo, Baffle Options



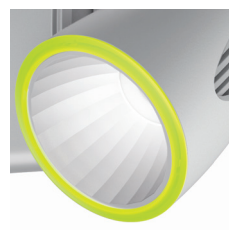
473 Etched Ice



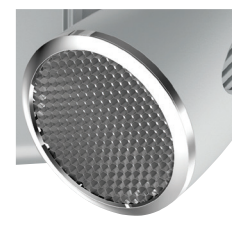
474 Neptune Blue



475 Mars Red

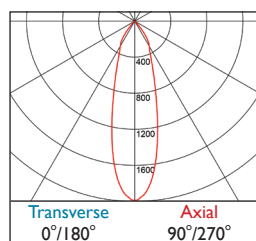


477 Acid Green

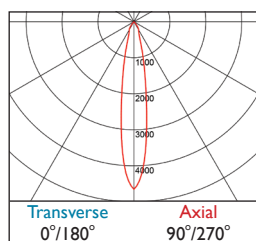


478 Anti Glare Baffle

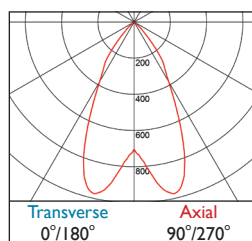
### Photometrics



362-363 DLOR: 0.81



364-365 DLOR: 0.83



366-367 DLOR: 0.86