



## Aleda® Duet Adjustable Pendant



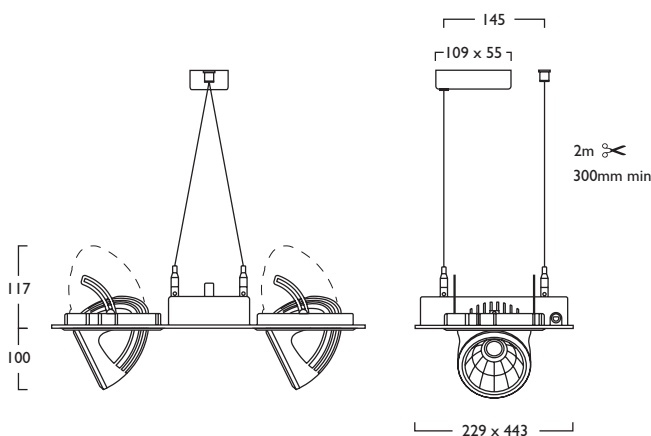
### LED CRI 80

2x 12W	LED	Duet	BS398	LED	12	+	377
2x 17W	LED	Duet	BS398	LED	17	+	377
2x 24W	LED	Duet	BS398	LED	24	+	377
2x 31W	LED	Duet	BS398	LED	31	+	377

### LED CRI 90

2x 12W	LED	Duet	BS399	LED	12	+	378
2x 17W	LED	Duet	BS399	LED	17	+	378
2x 24W	LED	Duet	BS399	LED	24	+	378
2x 31W	LED	Duet	BS399	LED	31	+	378

- Single point Zhaga Book 3 LED
- Available in a choice of lumen outputs, delivering up to 5029 lumens
- Efficacies up to 127 lm/W
- LED multi head styling neatly integrated into luminaire design
- All the features of the Aleda® adjustable downlighter
- CRI 80 and CRI 90 versions
- Colour stability within 3 MacAdams
- Life expectancy in excess of 60,000 hours (L70 B10)



230V  
50Hz

**IP**  
20

64°

350°

2.9 kg

#### Gear type F must be operated through a DSI

- A** Integral Driver
- F** Digital Dim
- J** Switch Dim
- S** DALI Dim

**3** Warm (3000K)    **4** Neutral (4000K)

**1** White (RAL 9010)    **2** Urban Graphite (RAL 7046)    **3** Black (RAL 9005)

Reflector	CRI 80	CRI 90
480 2x Narrow Beam	379	380
481 2x Wide Beam	381	382

144 2x 5m Twin Suspensions (wires only) (BS398, ES398, BS399, ES399)

Luminescent Halo, Baffle Options *Shown*

Tel: (0191) 280 9911    Email: [technical@hacel.co.uk](mailto:technical@hacel.co.uk)    Web: [www.hacel.co.uk](http://www.hacel.co.uk)

**Hacel**®  
Fluent in Lighting



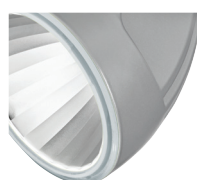
## Aleda® Duet Adjustable Pendant

	CRI 80				CRI 90			
	12W	17W	24W	31W	12W	17W	24W	31W
<b>3 Warm White LED (3000K)</b>								
Lumen Output	1945 lm	2715 lm	3838 lm	4823 lm	1648 lm	2299 lm	3251 lm	4085 lm
LOR	0.81	0.81	0.81	0.81	0.81	0.81	0.81	0.81
CRI	80	80	80	80	90	90	90	90
Total Power	13.2W	18.8W	25.5W	33.5W	13.2W	18.8W	25.5W	33.5W
Power Factor	0.90	0.93	0.95	0.96	0.90	0.93	0.95	0.96
Running Current	0.06A	0.09A	0.12A	0.15A	0.06A	0.09A	0.12A	0.15A
Inrush Current	8.0A (80us)	8.0A (80us)	10.0A (100us)	10.0A (100us)	8.0A (80us)	8.0A (80us)	10.0A (100us)	10.0A (100us)
Efficiency	117 lm/W	116 lm/W	121 lm/W	116 lm/W	101 lm/W	99 lm/W	103 lm/W	98 lm/W
Emergency Output (BLF)	447 lm (23%)	434 lm (16%)	460 lm (12%)	434 lm (9%)	379 lm (23%)	367 lm (16%)	390 lm (12%)	367 lm (9%)
<b>4 Neutral White LED (4000K)</b>								
Lumen Output	2028 lm	2830 lm	4002 lm	5029 lm	1767 lm	2465 lm	3486 lm	4380 lm
LOR	0.81	0.81	0.81	0.81	0.81	0.81	0.81	0.81
CRI	80	80	80	80	90	90	90	90
Total Power	13.2W	18.8W	25.5W	33.5W	13.2W	18.8W	25.5W	33.5W
Power Factor	0.90	0.93	0.95	0.96	0.90	0.93	0.95	0.96
Running Current	0.06A	0.09A	0.12A	0.15A	0.06A	0.09A	0.12A	0.15A
Inrush Current	8.0A (80us)	8.0A (80us)	10.0A (100us)	10.0A (100us)	8.0A (80us)	8.0A (80us)	10.0A (100us)	10.0A (100us)
Efficiency	124 lm/W	121 lm/W	127 lm/W	121 lm/W	108 lm/W	106 lm/W	110 lm/W	105 lm/W
Emergency Output (BLF)	466 lm (23%)	452 lm (16%)	480 lm (12%)	452 lm (9%)	406 lm (23%)	394 lm (16%)	418 lm (12%)	394 lm (9%)

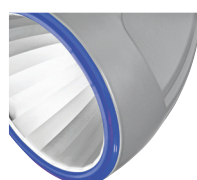
Table applies to one LED Light Engine

### Options

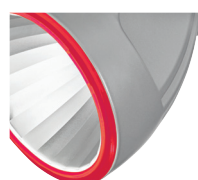
#### ■ Luminescent Halo Options



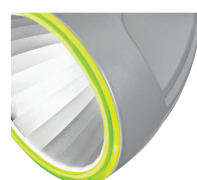
486 2x Etched Ice



487 2x Neptune Blue

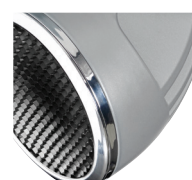


488 2x Mars Red



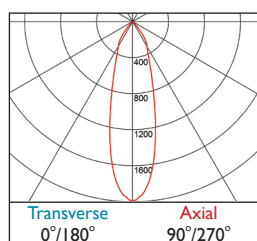
489 2x Acid Green

#### ■ Baffle Option

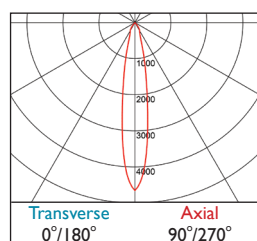


490 2x Anti Glare Baffle

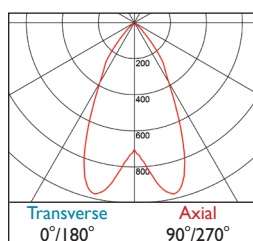
### Photometrics



377-378 DLOR: 0.81



379-380 DLOR: 0.83



381-382 DLOR: 0.86