



	CRI 80				CRI 90			
	12W	17W	24W	31W	12W	17W	24W	31W
3 Warm White LED (3000K)								
Lumen Output	1945 lm	2715 lm	3838 lm	4823 lm	1648 lm	2299 lm	3251 lm	4085 lm
LOR	0.81	0.81	0.81	0.81	0.81	0.81	0.81	0.81
CRI	80	80	80	80	90	90	90	90
Total Power	13.2W	18.8W	25.5W	33.5W	13.2W	18.8W	25.5W	33.5W
Power Factor	0.90	0.93	0.95	0.96	0.90	0.93	0.95	0.96
Running Current	0.06A	0.09A	0.12A	0.15A	0.06A	0.09A	0.12A	0.15A
Inrush Current	8.0A (80us)	8.0A (80us)	10.0A (100us)	10.0A (100us)	8.0A (80us)	8.0A (80us)	10.0A (100us)	10.0A (100us)
Efficacy	117 lm/W	116 lm/W	121 lm/W	116 lm/W	101 lm/W	99 lm/W	103 lm/W	98 lm/W
Emergency Output (BLF)	447 lm (23%)	434 lm (16%)	460 lm (12%)	434 lm (9%)	379 lm (23%)	367 lm (16%)	390 lm (12%)	367 lm (9%)
4 Neutral White LED (4000K)								
Lumen Output	2028 lm	2830 lm	4002 lm	5029 lm	1767 lm	2465 lm	3486 lm	4380 lm
LOR	0.81	0.81	0.81	0.81	0.81	0.81	0.81	0.81
CRI	80	80	80	80	90	90	90	90
Total Power	13.2W	18.8W	25.5W	33.5W	13.2W	18.8W	25.5W	33.5W
Power Factor	0.90	0.93	0.95	0.96	0.90	0.93	0.95	0.96
Running Current	0.06A	0.09A	0.12A	0.15A	0.06A	0.09A	0.12A	0.15A
Inrush Current	8.0A (80us)	8.0A (80us)	10.0A (100us)	10.0A (100us)	8.0A (80us)	8.0A (80us)	10.0A (100us)	10.0A (100us)
Efficacy	124 lm/W	121 lm/W	127 lm/W	121 lm/W	108 lm/W	106 lm/W	110 lm/W	105 lm/W
Emergency Output (BLF)	466 lm (23%)	452 lm (16%)	480 lm (12%)	452 lm (9%)	406 lm (23%)	394 lm (16%)	418 lm (12%)	394 lm (9%)

Aleda® Adjustable



LED CRI 80

12W	LED	ID398	LED	12	+	377
17W	LED	ID398	LED	17	+	377
24W	LED	ID398	LED	24	+	377
31W	LED	ID398	LED	31	+	377

LED CRI 90

12W	LED	ID399	LED	12	+	378
17W	LED	ID399	LED	17	+	378
24W	LED	ID399	LED	24	+	378
31W	LED	ID399	LED	31	+	378

- Quality engineering, smooth and precise pan and tilt adjustment
- Available in a choice of lumen outputs, delivering up to 5029 lumens
- Efficacies up to 127 lm/W
- Single point Zhaga Book 3 LED
- Medium beam reflector as standard, UGR <22
- Life expectancy in excess of 60,000 hours (L70 B10)
- Colour stability within 3 MacAdams
- To comply with current standards, Emergency versions are locked in the flush position

Gear types F & G must be operated through a DSI

- A** Integral Driver
- E** Emergency
- F** Digital Dim
- G** Digital Dim + Emergency
- J** Switch Dim
- K** Switch Dim + Emergency
- S** DALI Dim
- T** DALI Dim + Emergency
- C** DALI Dim + DALI Emergency

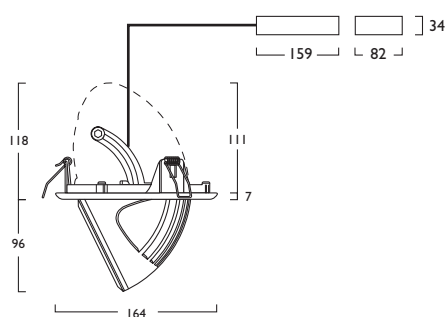
- 3** Warm (3000K) **4** Neutral (4000K)
- 1** White (RAL 9010) **2** Urban Graphite (RAL 7046) **3** Black (RAL 9005)

Reflector	CRI 80		CRI 90	
	379	380	381	382
384 Narrow Beam				
385 Wide Beam				

Luminescent Halo, Baffle Options *Shown*

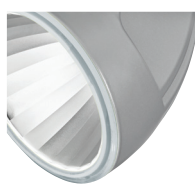


Aleda® Adjustable

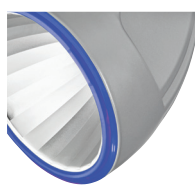


Options

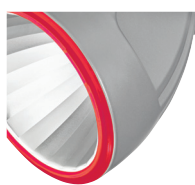
■ Luminescent Halo Options



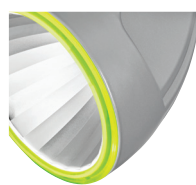
473 Etched Ice



474 Neptune Blue

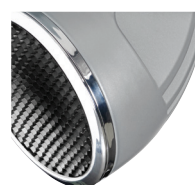


475 Mars Red



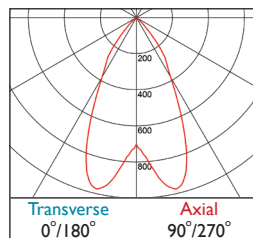
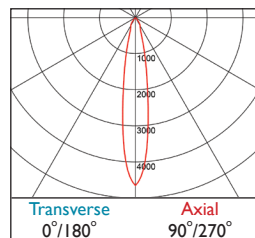
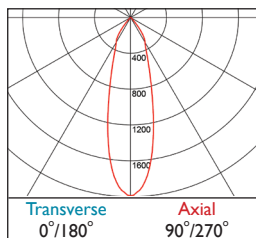
477 Acid Green

■ Baffle Option



478 Anti Glare Baffle

Photometrics



377-378 DLOR: 0.81 | 379-380 DLOR: 0.83 | 381-382 DLOR: 0.86