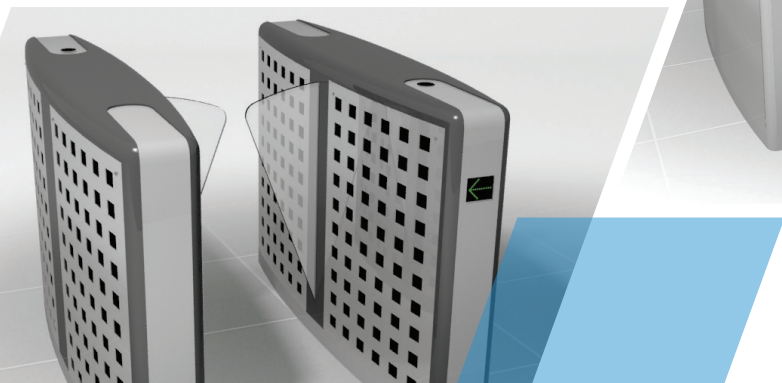
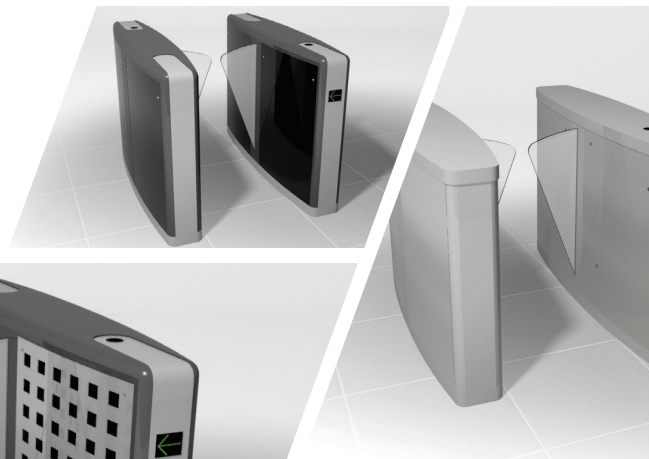


SPEEDSTILE BP

BA | EV



PRODUCT DATA

SPEEDSTILE BP

Bi-parting Speed Gate for Internal Installation

Motorised Bi-parting wings

Exclusive and timeless award winning design. Quiet and smooth in operation, this classic Gunnebo Speed Gate design is available in the BA finish in polyurethane colour finish or with stainless steel cabinets in the EV version, with a selection of top lid materials, side panels and many other customisation options including Lift Screen integrations.

Applications include government, Finance, Banking, Retail, Telecommunications, Information Technology, Publishing, Leisure, Education...

SpeedStile_BP_BA_EV_4.0_EN

MODE OF OPERATION

Passage in one or both directions is electronically controlled. On receiving a signal from the access control system, or remote control, the wings open (Normally Closed NC). If an unauthorised person tries to tailgate or attempts to enter from the opposite direction, the in-built alarm system is activated. If within the pre-set timeout no passage has occurred, the lane will close and reset. Normally Open N/O provides an open

walkway in rest position and will only close at unauthorised entry or tailgating attempts.

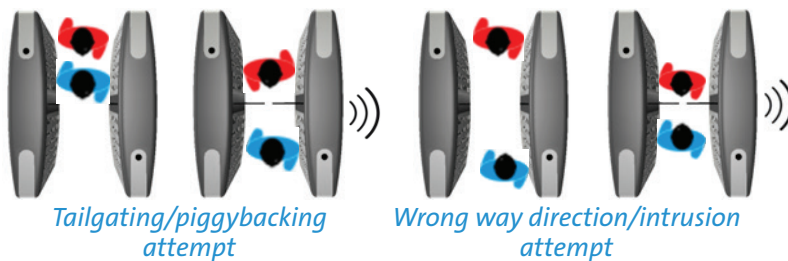


Normal Use (steady)		Alarm Conditions (flashing)
	Green card (Rest mode) Present card to the reader for authorisation	Incorrect use, re-present card to the reader for authorisation
	Green arrow Authorised use or designated free passage Proceed through the unit.	Emergency / Fire exit
	Red cross (Unit in use or no passage) Passage not authorised	Alarm, fraudulent condition or technical alarm

Standard	•	•	•	•	•	•	○	○	○	○	○
Wide	•	•	•	•	•	•	○	○	•	•	•

Plain dot indicates the functionality is implemented, empty dot indicates with some limitations, no dot indicates not available.

SECURITY FEATURES



Fraud Detection through sophisticated and proven algorithm

- Intrusion
- Tailgating
- Piggybacking
- Wrong way direction
- Leave aisle timeout

SAFETY FEATURES

- Safety force sensing
- Accurate presence sensing
- Emitter/receiver infrared sensors technology
- Logic voltage 24 Vac
- Voltage free contact input for Fire Alarm fail state
- Fail-Safe via battery back-up opening (option)
- Wide walkway for wheel chair or easier access
- Accompanied wheelchair or child passage management

*For security and safety reasons children must be supervised by an adult at all times in the vicinity of an active lane.
Any child being escorted through the lane must always precede the accompanying adult during passage.*



DESIGN / CONSTRUCTION

Available versions are the BA finish in polyurethane PUR painted, and the EV in Stainless Steel finish. Available cabinet design construction (for both versions)

Short cabinet length (N/C)

Long cabinet length (N/C)

Standard passage way 550mm and **Wide** passage (900mm) available. Available also as **Combi** - centre cabinet with narrow (550mm) passage in one side and wide (900mm) passage on the other side.

Available optional 50mm diameter LED display pictogram and LED way-mode indicators flush mounted within the lid surface and the end leg, with illuminated symbols.



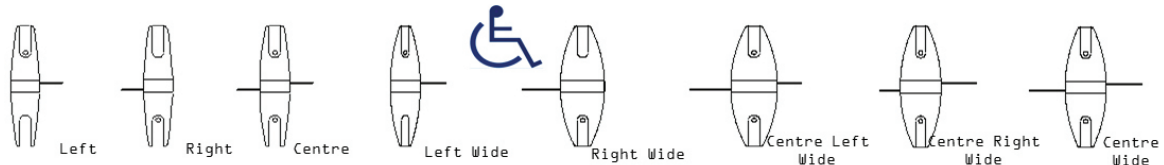
Green Card



Green Arrow

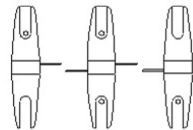


Red Cross

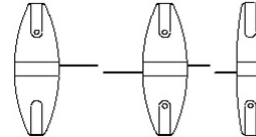


In order to create a lane it is necessary to have one right and one left cabinet. To create more than one lane, use one or more centre or combi cabinets. Select cabinets according to the number of lanes and passage width desired.

Two lane configuration comprising of 1N°L, 1N°C and 1N°R cabinets



Two lane configuration comprising of N°1 LW, 1N°CLW and 1N°R cabinet.



FINISHES

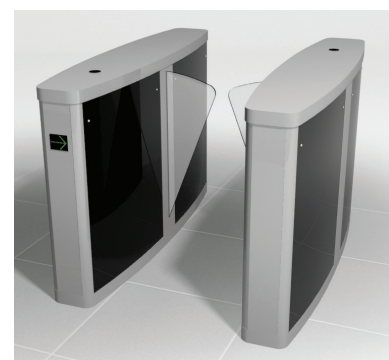
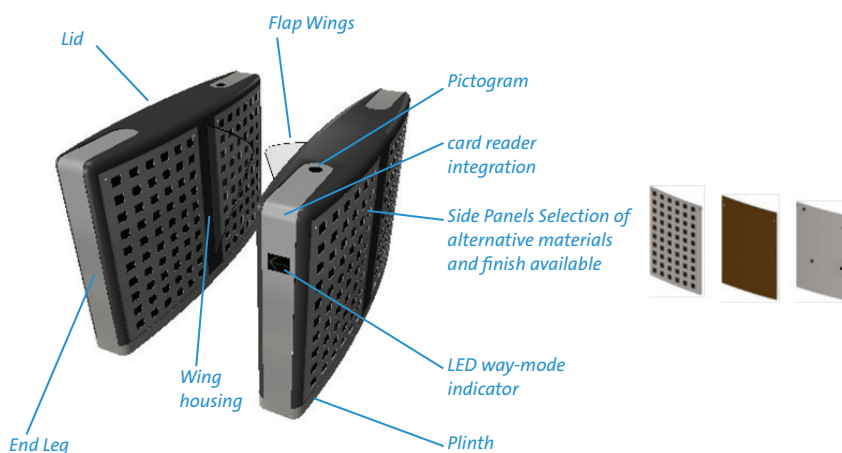
BA and EV versions share the same cabinet plinth and inlay finish in 304 grade stainless steel, wings 15mm clear acrylic.

Standard finishes further comprise:

Standard finish
Lid
End Legs
Wing housing
Side Panels

BA
 Metallic grey
 Painted polyurethane
 Painted polyurethane
 Painted steel to match lid
 Acrylic and stainless steel

EV
 / full stainless steel 304 grade
 / stainless steel
 / stainless steel
 / stainless steel
 / 8.5mm 3 ply laminate safety glass



PMMA & Stainless Steel
 8.5mm 3ply laminate safety glass
 Full Stainless Steel

OPTIONS & ACCESSORIES

- Alternative finishes and materials
- LED way mode indicator
- Pictogram
- RS485 interface
- COMR1 switching interface
- Card reader integration
- Battery back-up
- Digital LCD counter
- Emergency break glass push button
- Remote control systems
- Lift screen integrations

ACCESS SPECIFICATIONS

Flow rates by type of Reader (1)			Disabled Access	Emergency Egress
Insertion Type	Swipe	Proximity		
20 PASSAGES / MN	30 PASSAGES / MN	40 PASSAGES / MN	● (2)	●

- (1) Approximate figures
- (2) 900mm net passage way and algorithm able to manage wheelchair access

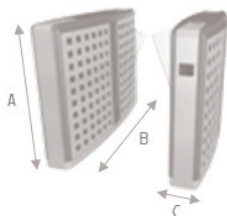
ELECTRICAL DATA & CONDITIONS OF USE

Power Supply	Power Rating	Battery Back-up	Fire Signal	Operating Temperature	IP Rating	Noise Level
230VAC 50HZ(1)	10VA STAND BY 300VA IN OPERATION	FOR 1 LAST OPERATING CYCLE(2)	INPUT FOR VOLTAGE FREE CONTACT	+5°C TO + 40°C RH 95% NO CONDENSING	IP20	LESS THAN 55dB(2)

- (1) 115Vac 60Hz also available
- (2) Option
- (3) Note: Average background noise in office environment is 50-55dB

DIMENSIONS & WEIGHTS

	Overall Height	Passage Width	A Cabinet Height	B Cabinet Length	C Cabinet Width	Weight (kg)	
						Side Cabinet	Centre Cabinet
STANDARD SHORT LANE	950	550	950	1448	300	120	145
WIDE SHORT LANE	950	900	950	1448	480 (490 for EV)	145	190
STANDARD LONG LANE	950	550	950	1932	300	200	240
WIDE LONG LANE	950	550	950	1932	480 (490 for EV)	250	280



dimensions in (mm), weight net (kg), might require lifting equipment. For details refer to installation detail drawings

INSTALLATION & MAINTENANCE

Product Delivery	Application	Site Preparation (1)	Cabling & Conduits (2)	Control Board Location	Systems Integration(5)	Maintenance Access	MTTR(3)	MCBF(4)
FULLY ASSEMBLED	INDOOR	FLAT & LEVEL FINISHED FLOOR +/- 5mm	THROUGH THE GROUND	IN MASTER SPEEDSTILE CABINET	15 DIGITAL INTERFACE I/O RS485 (option) SETTINGS PROGRAMMABLE VIA PARAMETERS	THROUGH LATERAL PANELS	LESS THAN 30 MINUTES	4 MILLION (5 MILLION if NO - Normally Open)

- (1) Bolting depth MIN 70mm, concrete MIN fckcube30N/mm2 resistance, MIN 1500 (2000 for NO)x 500 (750 for wide and combi) x 150mm deep
- (2) Running MIN 140mm below finished floor level, should rise MIN 50mm from foundation
- (3) Mean time To Repair
- (4) Mean Cycle Between Failure
- (5) Potential free contact for card reader input

It is the customer's responsibility to ensure the structural integrity and strength of the installation location. Data provided is for information only, please refer to your usual Gunnebo Customer Service contact in order to prepare the installation site.

THE JOURNEY TOWARDS A SAFER WORLD STARTS AT THE ENTRANCE

CONTACT US FOR MORE INFO

Gunnebo Entrance Control Ltd
 Bellbrook Business Park, Uckfield, TN22 1QQ
 United Kingdom
 Tel. +44 1825 761 022
 Email. info.entrancecontrol@gunnebo.com
 Web. www.speedstile.com

