

**“When you’ve got a  
tough job to do...**

**Ground-Guards will help  
you do it safely & profitably”**



**GreenTek  
Ground-Guards™**

# Trust us to come up with the solutions that you need!

We believe that giving our customers **simple, honest, on-time, quality service** is still every bit as important today as it was when the company was first started back in 1969.

Here is our commitment to you:

**Simple...** Your expectations are the goal that we constantly strive to exceed, by providing you with **world-class solutions** to your ground management needs.

**Honest...** We have an enduring passion for what we do, which you will find is evident every time you have contact with us. Our modern, dynamic, forward thinking approach is backed up by the solid experience of serving the ground management industry for the past 44 years, since 1969.

**On-Time...** With a total focus on customer satisfaction, we will work along with you to provide you with simple, cost-effective solutions, on time and within budget... every time.

**Quality Service...** Trust us...your total satisfaction is our number one priority, wherever you are, worldwide.

*"Excellent service, next day delivery a real bonus."*

*"Outstanding. Enquiry on the Monday, delivered on the Tuesday AM."*

*"Your contact was swift to get back to me and provide quotes. Very helpful and pleasant to deal with."*

*"The level of service and assistance which was given to myself from Phil was just outstanding."*

**GreenTek**  
**Ground-Guards™**

*"Very responsive, polite, informative and supportive. Would recommend your company without hesitation."*  
EPSOM

*"Very good. (Paid for themselves already)."*  
ANGLESEY



We can save you from this kind of situation.

*"1st class - old fashioned personal service. Nice to know firms like yours can still be found. Delighted."*

HARROGATE



Monitoring the progress of a temporary car park installation.

*"Your sales person was very helpful and with a quick response."*

BRAMPTON

*Excellent. Delivery arrived when they said they would! Appreciated the free sample for use prior to commitment to purchase."*

EPSOM

## Never Again!

The summer of 2012 showed that it is not only in winter that ground protection is essential!

But whilst the wet summer, plus the Olympic events, caused a general shortage of ground protection equipment nationally, we are pleased to say that at GreenTek we never ran out of stock.

### Technical Advice

Our Technical Team can give you helpful advice on your needs, and provide you with a written quotation for the agreed solution. They are pleased to assist you, no matter how large or small your enquiry is. Whenever necessary, one of our Technical Advisors will visit your site to assist in planning the most appropriate solution for your needs.

### Sale or Hire

GreenTek both sell and hire out the **Ground-Guards** System. Thousands of panels are held on the hire fleet at any one time, enabling us to promptly meet your requirements. Should you decide at any time during a hire that you would prefer to invest in owning the **Ground-Guards**, this can be accommodated.

### Health & Safety & Environmental Policy

At GreenTek we take the safety of our staff and customers seriously, and continually work to improve operating conditions and practices.

We have made a substantial investment in an automated panel washing machine so that we can ensure all **Ground-Guards** are supplied clean each time they go out on hire. The panel washer recycles its own water, making it very environmentally friendly in operation.



Next day nationwide delivery available.

**GreenTek**  
**Ground-Guards™**



**SALE OR HIRE  
0113 267 6000**

## Relocatable roadway system gives rapid site access

A Ground-Guards trackway is the smart solution for your rapid site access requirements. It helps to save carving up the ground, minimise reinstatement costs, prevent vehicles getting bogged down, keep your jobs on schedule, *and keep your workers SAFE!*

Why risk trying to manage without Ground-Guards ever again?

Ground-Guards are the originators of the plastic trackway concept. These plastic panels weigh only 39kg, and so can be installed by hand without a crane lorry, yet are so tough that they are **guaranteed unbreakable for life by vehicles up to 120 tonnes.**



Rigging a pylon - without Ground-Guards!



Siting a drilling rig - without Ground-Guards!

## But what's wrong with a good old-fashioned stone roadway?

The problem with "good old-fashioned stone roadways" is that by the time you factor in all the hidden costs, they are not as cheap as they seem.

And they certainly aren't environmentally friendly!

- ✗ A stone roadway requires excavation, moving and stockpiling spoil, buying in the stone, then filling and compacting it
- ✗ At the end of the job, the whole operation has to be reversed
- ✗ The contaminated stone may have to be hauled and tipped off-site
- ✗ Haulage is expensive
- ✗ Extra journeys increase the project's carbon footprint
- ✗ Excavation is not always allowed due to tree roots or archaeological considerations
- ✗ Stone roads cannot be quickly repositioned like Ground-Guards can, as the job progresses
- ✗ Stone is a one-use expense. Ground-Guards are a long-term investment that can be re-used on job after job after job...

## 1 load of Ground-Guards = 32 loads of stone!

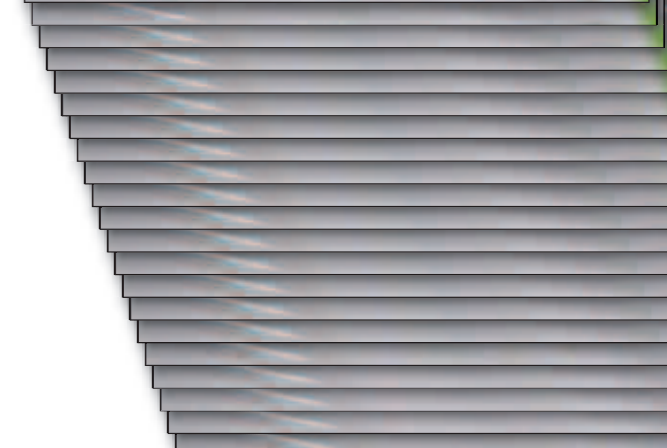


This lorry holds 500 Ground-Guards. Enough to make a 600m roadway.

To do that in stone, 3m wide and 250mm deep requires excavating and shifting 450m<sup>3</sup> of earth and bringing in approximately 32 25 tonne lorry loads of stone. Then reversing the whole process afterwards. **64 lorry journeys compared to 2 for Ground-Guards!**



=



**120 TONNES  
UNBREAKABLE\*  
GUARANTEED**  
\* See [www.ground-guards.co.uk](http://www.ground-guards.co.uk)



**FAST DELIVERY  
0113 267 6000**

## How to avoid damaged turf....

Planning the use of Ground-Guards into your job before you start can save you from ruining your precious turf. And the extra safety that they provide could also save someone from having a serious accident.

These lightweight plastic panels have now become recognised as standard equipment for use on many sites. This is largely due to the fact that they are virtually indestructible. They are guaranteed unbreakable by vehicles of up to 120 tonnes which obviously makes them ideal for manoeuvring heavy equipment around on site with minimal disturbance to the turf.

Ground-Guards are made from environmental friendly 100% recycled plastic, and they range in sizes from 8' x 4' down to 6' x 2' and are available with different tread patterns to suit a whole range of uses. Panels can be quickly fixed together without tools by use of special joining clips.



Ground-Guards can be quickly installed, several layers thick if needed.

## RoadTrack™



## THE SOLUTION...

- ✓ Light to carry and quick to lay
- ✓ Eliminate cost of continually replacing slippery splintered plywood boards
- ✓ Easy to move around using the Handi-Hook
- ✓ Super tough 100% recycled poly-ethylene plastic 1/2" thick – flexible enough to conform to ground contours
- ✓ Joiners available for semi-permanent fixture for roadways / carparks
- ✓ Guaranteed unbreakable for life by vehicles up to 120 tonnes\*

**If you can break them - we'll replace them!**

\*Ground-Guards are guaranteed unbreakable for life by vehicles up to 120 tonnes. Note, it is the customer's responsibility to assess the load bearing capacity of the ground and determine what weight of vehicle it is capable of safely supporting. Ground-Guards are not suitable for bridging purposes.

## SALE OR HIRE

CODE	SIZE	WEIGHT	TREAD OPTIONS		
			ROADWAY / ROADWAY	ROADWAY / SMOOTH	ROADWAY / WALKWAY
GG48	4' x 8'(1.2x2.4m)	39kg	•	•	•
GG38	3' x 8'(0.9x2.4m)	29kg	•	•	•
GG28	2' x 8'(0.6x2.4m)	20kg	•	•	•
GG36	3' x 6'(0.9x1.8m)	22kg	•	•	
GG26	2' x 6'(0.6x1.8m)	15kg	•	•	
OP22	2'x2'(0.6x0.6m)	21kg			
OP23	2' x 3'(0.6x0.9m)	31kg			



Outrigger Pads prevent ground damage by excavator jack legs.

# Temporary Car Parks

**FOR A FREE NO-OBLIGATION SITE CONSULTATION CALL 0113 267 6000**



## No-Dig Temporary Car Parks

If a full-scale excavation and construction project is not viable in terms of cost, or if obtaining planning permission could be difficult, a Ground-Guards temporary car park is your ideal solution.

There are two temporary car park systems in the Ground-Guards range. The Ground-Guards RoadTrack panels measure 2.4m x 1.2m (8' x 4') and clip together to quickly form roadways and car parks that are guaranteed unbreakable by vehicles up to 60 tonnes.

The alternative is the FastTrack system on page 9 which consists of hexagonal tiles which instantly lock together by means of their integral connecting flanges. They provide an ideal surface for pedestrians, cars, or light goods vehicles.

The Ground-Guards temporary car park systems are so versatile that they can provide unique solutions for a whole range of difficult situations, for instance where excavation is inappropriate due to the presence of tree roots, or on an archaeologically sensitive site. And the big bonus is that planning permission is not usually needed for temporary use.



Ground-Guards FastTrack tiles quickly lock together to form a solid surface that is suitable for vehicles and pedestrians.



Tiles lock together without tools.

  
100% RECYCLED



Providing a firm surface for vehicles.



Anti-slip tread is ideal for pedestrians.

## Easily installed car parks

The Fast Track system consists of hexagonal tiles which instantly lock together by means of their integral connecting flanges. They provide an ideal surface for pedestrians, cars, or light goods vehicles, and their unique simplicity needing no tools or special skills, is the perfect solution for a quickly installed temporary car park.

### THE SOLUTION...

- ✓ Quick and easy to install and move – no tools needed
- ✓ No special skills required to install – can easily lay yourself
- ✓ Temporary car parks do not usually need planning permission
- ✓ Manufactured from 100% recycled HDPE – reducing your carbon footprint
- ✓ Avoids the need for excavation works

# Get the job done with

# GreenTek Ground-Guards™



**LARGE STOCK ALWAYS AVAILABLE**

Watch these videos at [www.ground-guards.co.uk](http://www.ground-guards.co.uk)



German emergency services field test.



"Destruction Test" fails to crack Ground-Guards.



Ground-Guards are convenient to transport, and easy to move around using the Handy Hook.

**Arrive safely on site**



**Nearly finished**



**A job well done!**



A wide selection of joining clips are available to suit all applications.



The panels quickly connect together using the special No-Tools joiners.



For pedestrian areas, the Walk pattern finish and Hammer-Fix joiners are ideal.

**GreenTek Ground-Guards™**

*Insist on the genuine article...*

## Local Authority use

With local authorities needing to comply with ever higher standards of safety and efficiency, many are now specifying the use of Ground-Guards for use everywhere from highways to cemeteries.

For cemeteries, the panels that have one treaded side and one side smooth are the most popular. These can be used at the grave side with the smooth side facing upwards, to load the soil onto, thus making it easy to shovel back into the grave afterwards.



Smooth topped boards enable soil to be easily shovelled back into the grave.



Ground-Guards RoadTrack panels provide verge protection for highway maintenance works.

## Trench-Guards™



Trench-Guards do not splinter on the edge like fibreglass panels do.



## Tree root protection

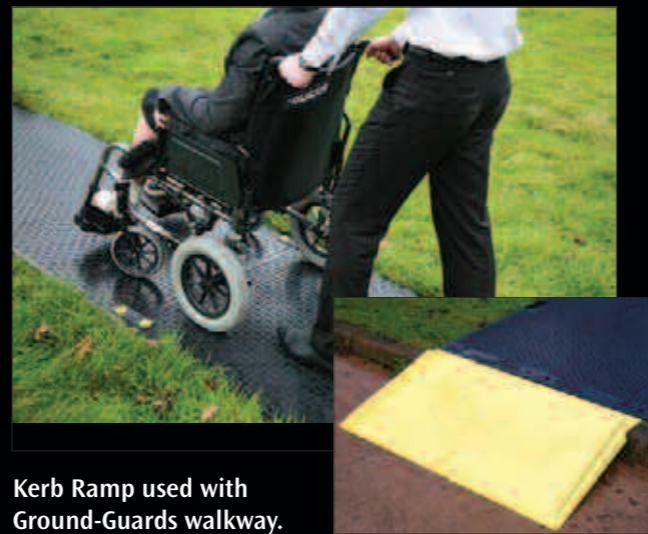
Planning Departments may often need to stipulate that site access roads will provide suitable ground protection when passing over tree roots. A double layer of Ground-Guards with 150mm of wood chips sandwiched in-between creates a suitably cushioned roadway for this purpose.



Ground-Guards in use for protecting tree roots from construction site damage.

## Equality Act 2010

The Equality Act 2010, which replaces the DDA Act, presents a challenge as to how to provide temporary wheelchair access over grass or rough ground when required. The Walk pattern Ground-Guards provide the perfect solution and can be re-used time after time at all manner of events from funerals to school sports days.



Kerb Ramp used with Ground-Guards walkway.

## Don't risk steel roadplates for pavement crossings

Theft of steel roadplates used for pavement crossings is not only expensive for you, but it puts pedestrians at risk of falling down exposed trenches. It's clearly time to move from steel to plastic. The Trench-Guard system from GreenTek sets a new standard in trench cover safety.

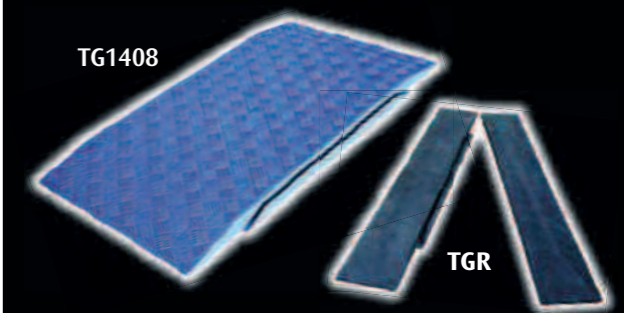
The fibreglass or plywood boards traditionally used in this industry have no means of being joined together, thus running the risk of them moving apart and leaving a dangerous hole that a vehicle or pedestrian might slip down. By contrast, the new Trench-Guard panels have interlocking flanges that connect them firmly together to prevent this happening.

ITEM	SIZE	WEIGHT	LOAD	SPAN
Trench-Guard TG1408	1.4m x 0.8m	22kg	500kg per wheel i.e. 2 tonne car	600mm
End Ramp TGR	1.4m x 0.2m	14kg	Use only in conjunction with TG1408 Trench-Guards	

Not for highway use - pedestrians and light vehicles only.

## THE SOLUTION...

- ✓ Superior safety trench cover system
- ✓ Ultra tough plastic does not splinter on edges
- ✓ Panels interlock without tools for safety
- ✓ Steel reinforced honeycomb structure
- ✓ Light-weight easy to handle
- ✓ Will support a load of 500 kg per wheel over a 600mm trench
- ✓ Size: 1.4 x 0.8m

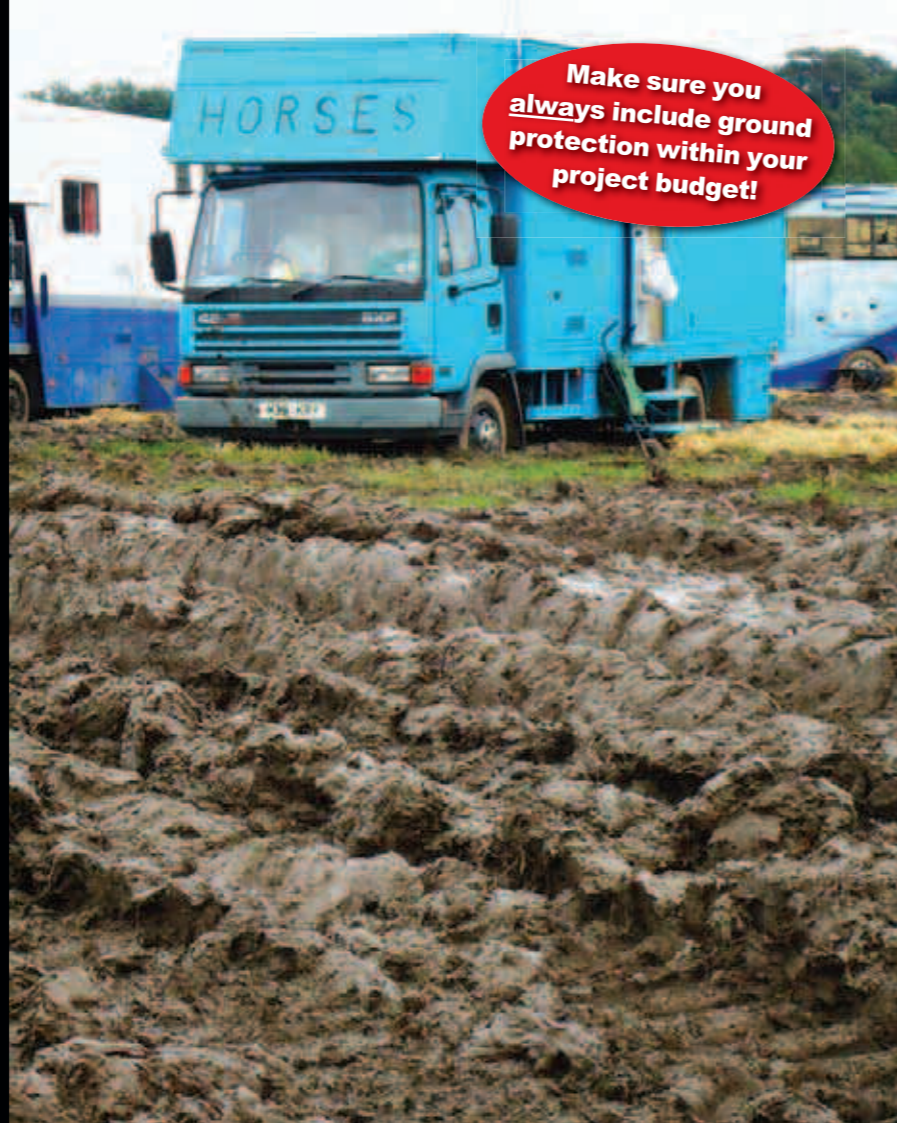


**GreenTek**  
**Ground-Guards™**

For versatility, insist on...

# Events Solutions

Don't let your event turn into a muddy washout! The one thing you can't control is the weather... so be prepared! We can offer you a substantial range of flooring systems for indoor and outdoor use. The Ground-Guard Road Track System is an ideal solution for a roadways or car parks for your event. The panels with a Walkway tread are ideal for pedestrian pathways.



## Fast Floor™ Marquee Flooring

**NEW**



## Marquee Flooring System is light and durable

The FastFloor System is ideal for marquee floors, event walkways, and temporary car parks. These 50 x 50cm tiles instantly clip together to provide a hard wearing easy-to-clean surface, and can be kept pre-joined as panels of four tiles for rapid installation. They only take up half the volume of traditional timber marquee flooring panels, and at only 6kg per sq m they are less than half the weight.



Easy to handle and install.

## Quick Roll™

Our new Quick Roll System is perfect for both indoor and outdoor use - our quickest and simplest trackway system yet! Rolls out in seconds, needing no tools or special skills to clip together, providing a smart and hard wearing surface, excellent for exhibition flooring or pedestrian pathways!



Rolls out in seconds.



Ideal for indoor and outdoor shows.





## Dedicated for grass

Grass Rings is a 100% recycled injected moulded structural grid system designed specifically to stabilise and reinforce grass. The design is not compromised by attempting to cater for gravel as well. There is another dedicated product for this on page 18. Grass Rings have a uniquely open cell pattern which enables the grass roots to spread freely, horizontally and vertically. Grass Rings has been independently tested to sustain loads of 500 tonnes per square metre with no sign of failure.



Grass Rings are designed specifically for reinforcing grass and maintaining its health.

### THE SOLUTION...

- ✓ Protects grass from compaction by vehicles or foot traffic
- ✓ Flexible tile design follows contours
- ✓ Special open grid pattern for excellent root development
- ✓ Unique double-interlocking design takes up 50% less volume for transport and storage, reducing carbon footprint



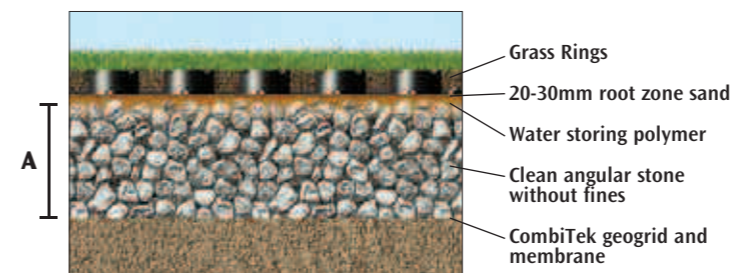
The open design of Grass Rings enables roots to spread laterally and downwards for healthy durable turf.



### Environmental Benefits

- Reduces the requirement for hard surfaces
- Reduced storm water run off
- Waterway contamination reduced by the pollutant removal capability of grass
- Erosion control
- 100% recycled plastic
- Reduces reflective heat
- Use it in your sustainable urban drainage schemes (SUDS)

### Base Course Depth Guide



DIMENSION A	TRAFFIC TYPE
75mm - 100mm	Pedestrians
100mm - 150mm	Light Vehicles
200mm - 300mm	Trucks

## Overflow parking

Grass parking areas for event parking have significant environmental benefits being an attractive green permeable surface. As shown here, the Grass Rings reinforced parking bays combined with a porous hard surface such as Gravel Rings for the heavy wear areas, will provide the ultimate environmentally acceptable solution.



Grass Rings can be used to create reinforced parking areas and golf buggy paths.



Perfect for emergency access routes.



For grassed areas that are only occasionally used for overflow car parking Grass Reinforcement Mesh provides an inexpensive solution, but avoid using the area until the grass has grown through and intertwined with the mesh to create a firm surface.

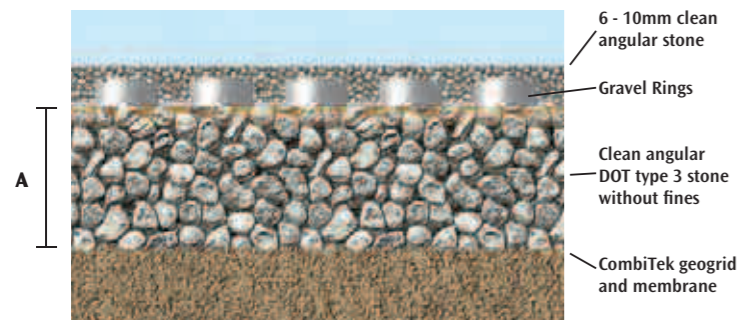


# Gravel Rings™



## Dedicated for gravel

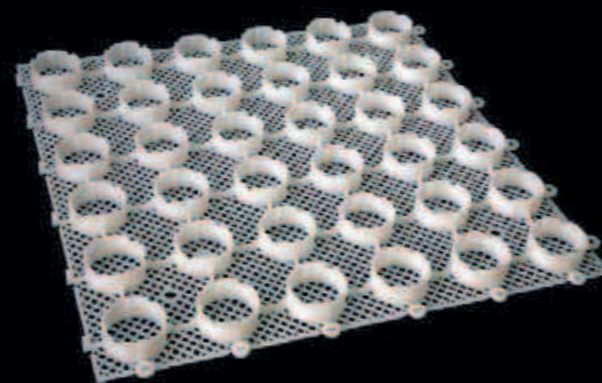
Gravel Rings are the newest, state-of-the-art development for porous paving. Rather than just using an ordinary grass reinforcement tile, these ones are designed specifically for gravel and have a unique mesh base. This forms a separator which keeps the smaller decorative gravel from migrating down into the stone sub-base beneath. This is vital to stop the tiles riding up above the decorative gravel, thus keeping the job durable and smart.



DIMENSION A	TRAFFIC TYPE
75mm - 100mm	Pedestrians
100mm - 150mm	Light Vehicles
200mm - 300mm	Trucks



Gravel Rings are designed specifically for gravel reinforcement. They have a moulded mesh infill to stop them riding up, and the gravel migrating down.



## THE SOLUTION...

- ✓ Unique purpose-designed gravel stabilisation tile
- ✓ Mesh base prevents gravel migrating
- ✓ Mesh base is integrally moulded, not just glued on
- ✓ Base does not trap organic matter, thus reducing potential for weed growth
- ✓ Can support 250 tonnes/m<sup>2</sup> (large trucks)
- ✓ 50 x 50 cm tiles come ready-assembled as 1m x 1m panels
- ✓ 140m<sup>2</sup> per pallet

# Bunker-Drainer™



An additional drive shaft with a Vibrating Poker attachment is also available for concreting work.

## Zero hassle self-priming pump

One thing you can't control is the weather. It's at times like this that you'll be glad you've got a GreenTek Bunker-Drainer.

This pump means business! It is not just your conventional water pump with a suction hose that is difficult to get primed, and keep flowing when the level gets low. The Bunker-Drainer's 5hp Honda engine drives a heavy duty flexible drive shaft, with a high volume rotary impellor pump mounted directly on the end of it. Because the pump is actually in the water it needs no priming, and can handle muddy water with ease.



Deals with deep flooded trenches fast and efficiently.

## THE SOLUTION...

- ✓ Self priming
- ✓ Quickly drains flooded areas
- ✓ Handles muddy and gritty water
- ✓ Easily transportable
- ✓ Self-powered, so does not tie up one of your vehicles

# Wish this was YOUR workshop?

**NEW**



## **TuffTek**<sup>TM</sup>

### **Smart Security**

A smart and tidy working environment will pay off in every way. Not only will it reduce the risk of trips and falls over equipment lying on the floor, but increased pride in the facility can reflect in greater care and respect for the machinery fleet itself, thus reducing maintenance costs.

**Be smart – upgrade your facility with TuffTek.**

Beat the thieves with a TuffVault security chest.



***“Call us TODAY for your TuffTek catalogue!”***

**GreenTek**  
**Ground-Guards**<sup>TM</sup>

**Manor Farm, Otley Road, Leeds LS16 7AL UK**

**Tel: 0113 267 6000 Fax: 0113 267 2222**

**Email: [info@greentek.org.uk](mailto:info@greentek.org.uk) [www.greentek.org.uk](http://www.greentek.org.uk)**